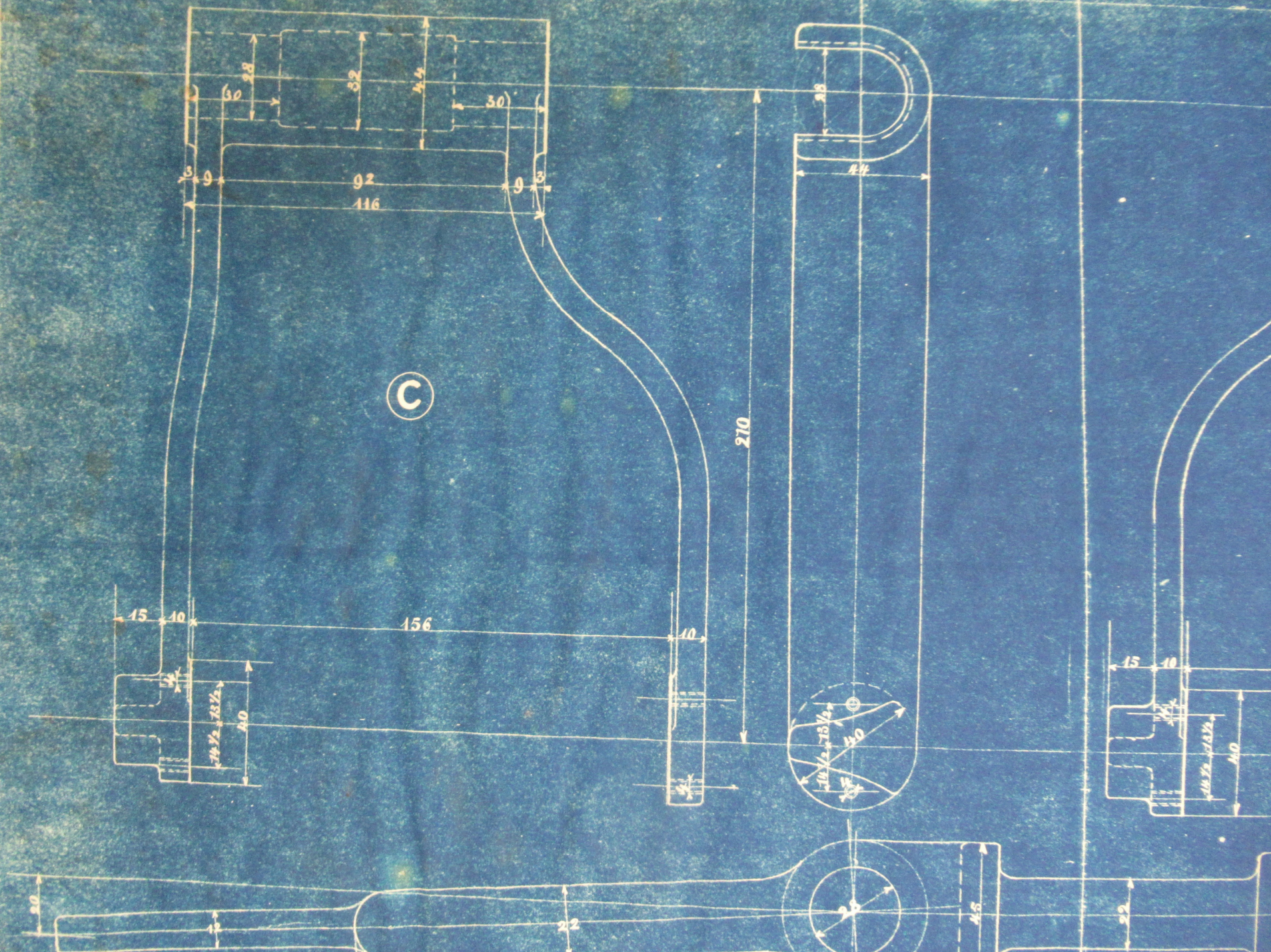


12 DMC 135-180

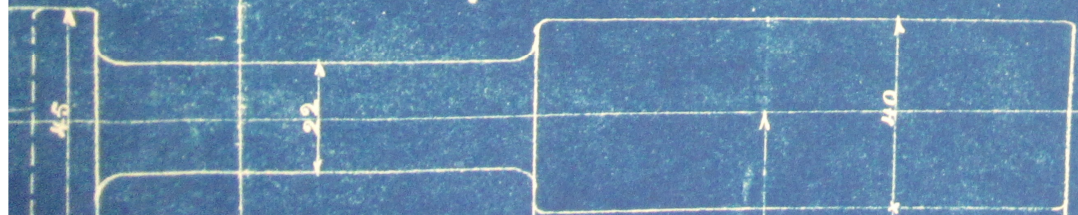
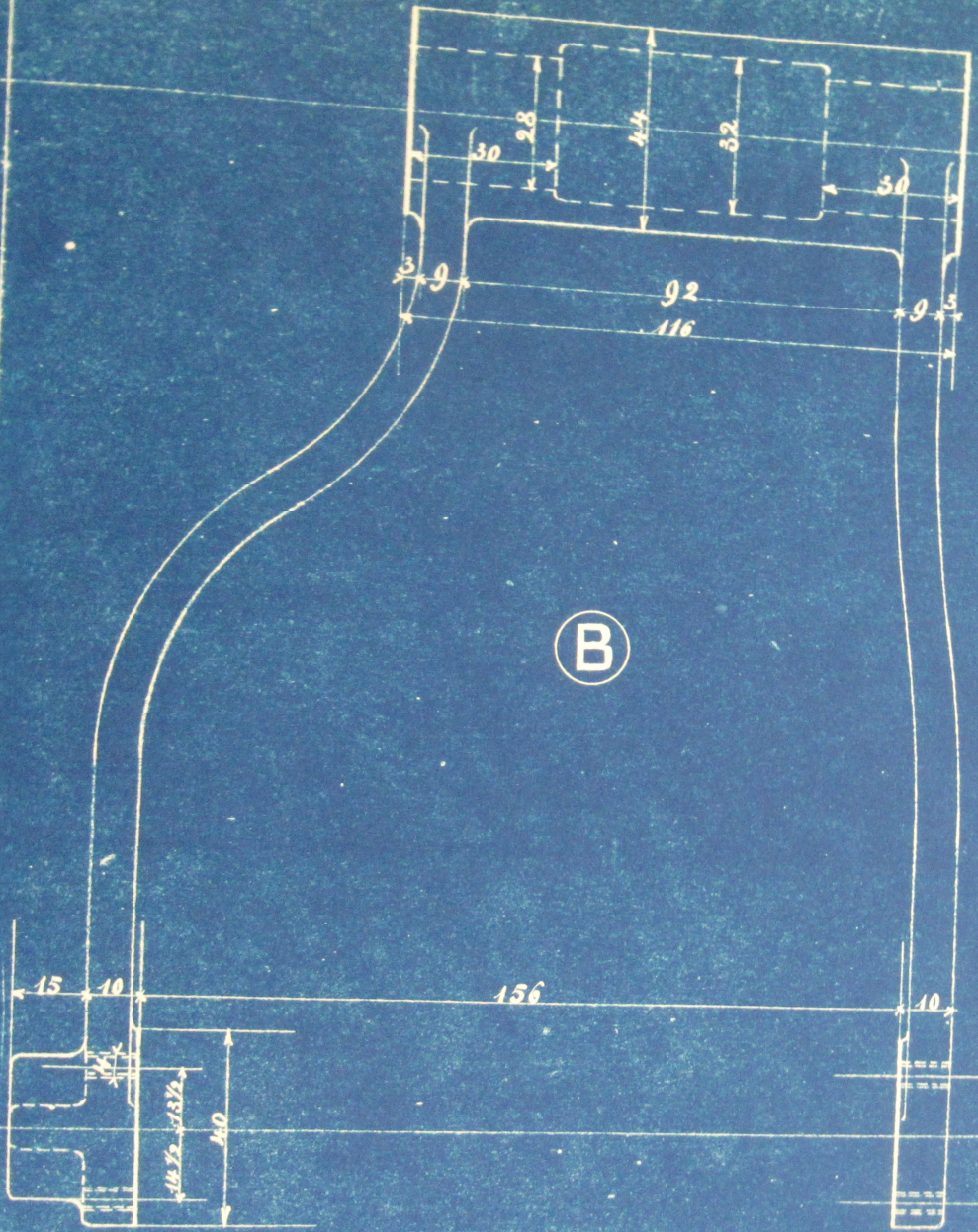
12 DMC

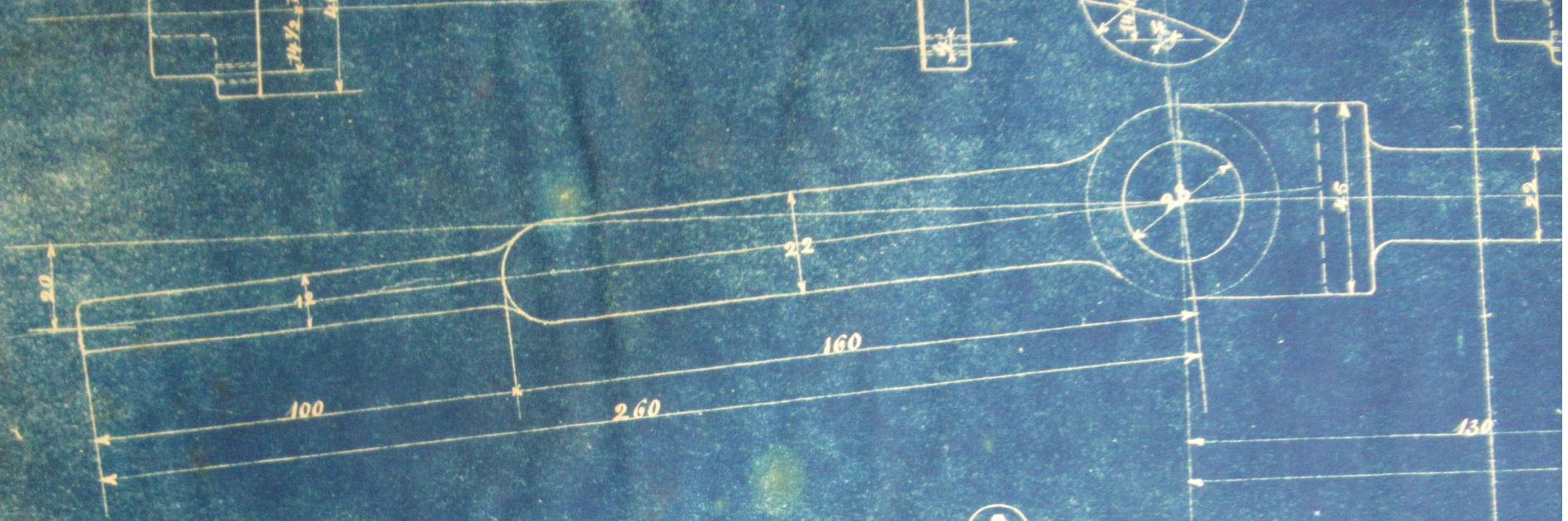
151



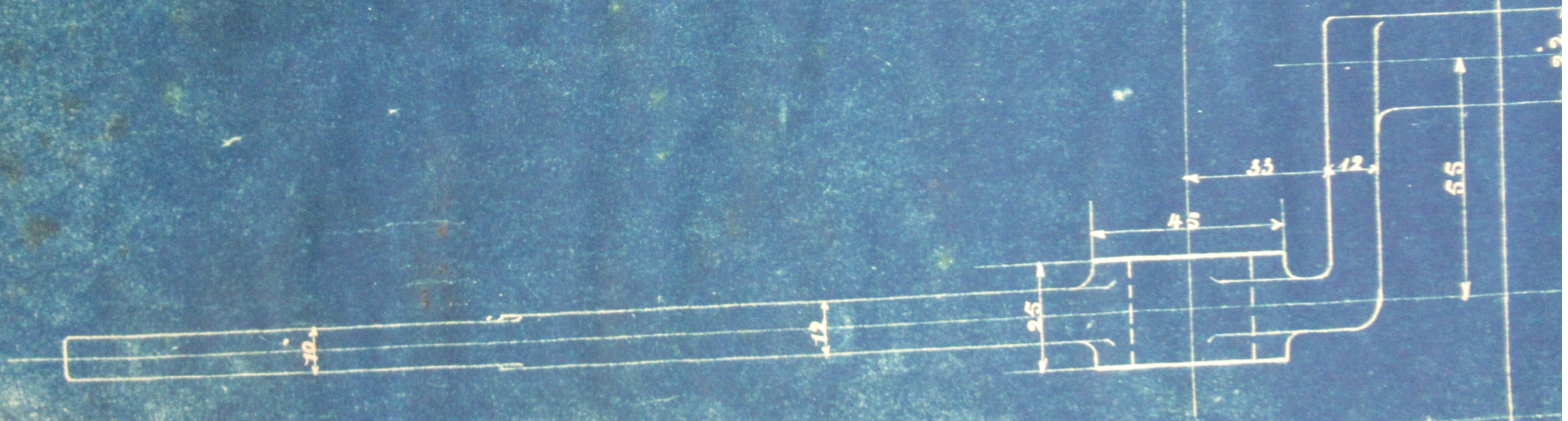


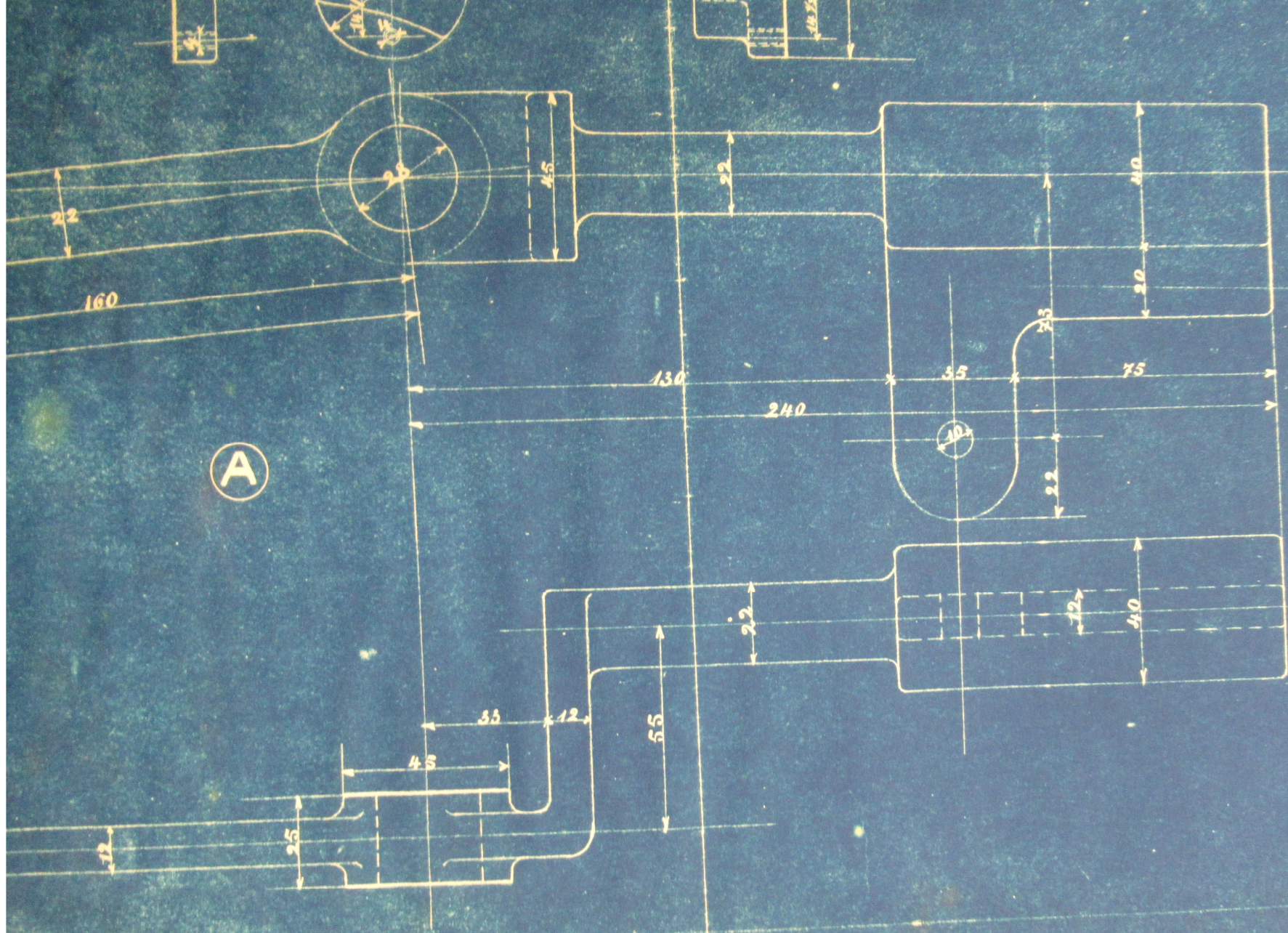






(A)





8	C	MGM47	La
8	B	"	44
8	A	"	42
Pièces	Pos.	Mod. N°	
	Compte	DOLL	
	Designation speciale	Fie	
	Date	Mach	
		106 pe	
		Ech	

8	C	MGM 47	levier porte-bobines.	Fente droite	
8	B	" 44	" " "	" gauche.	
8	A	" 42	" du mouvt des bascules	"	
Pièces	Pos.	Mod. N°	Désignation	Mat.	Observation
	Compte	DOLLFUS MIEG & C <sup>ie</sup> Société anonyme			
		<i>Finissage III.</i> <i>Machine à tizer à</i> <i>106 petits tambours.</i>			
	Désignation spéciale	Date:		Dessiné par: G. Roy.	
	Date	Echelle: 1:1.		N° 13231.	

13231

