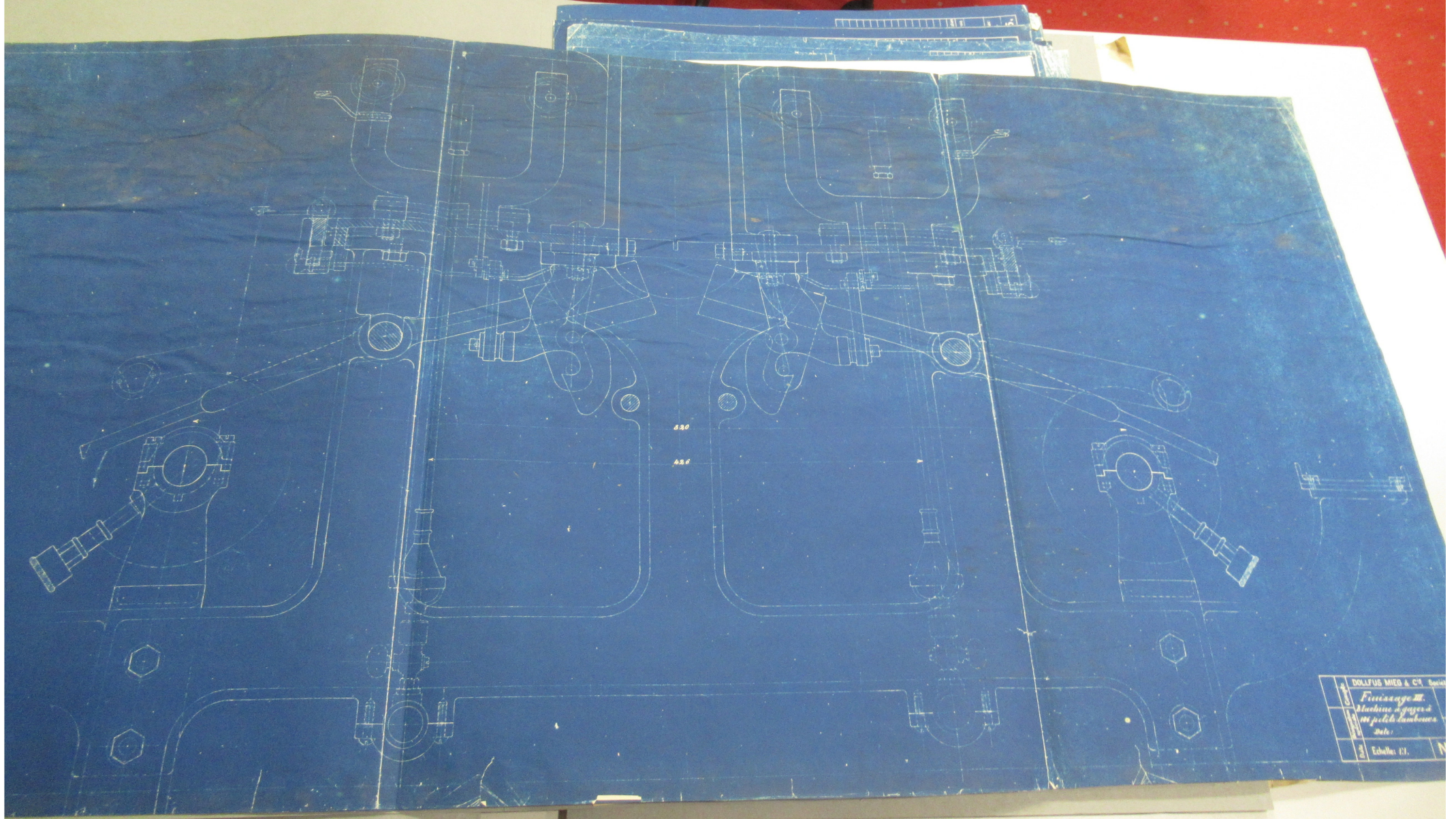
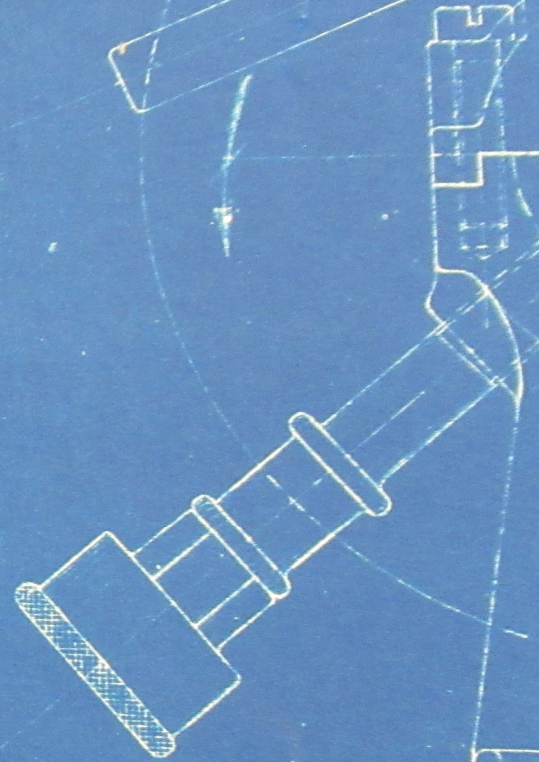
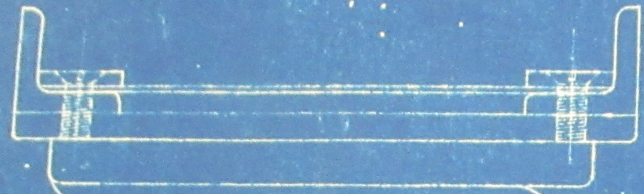


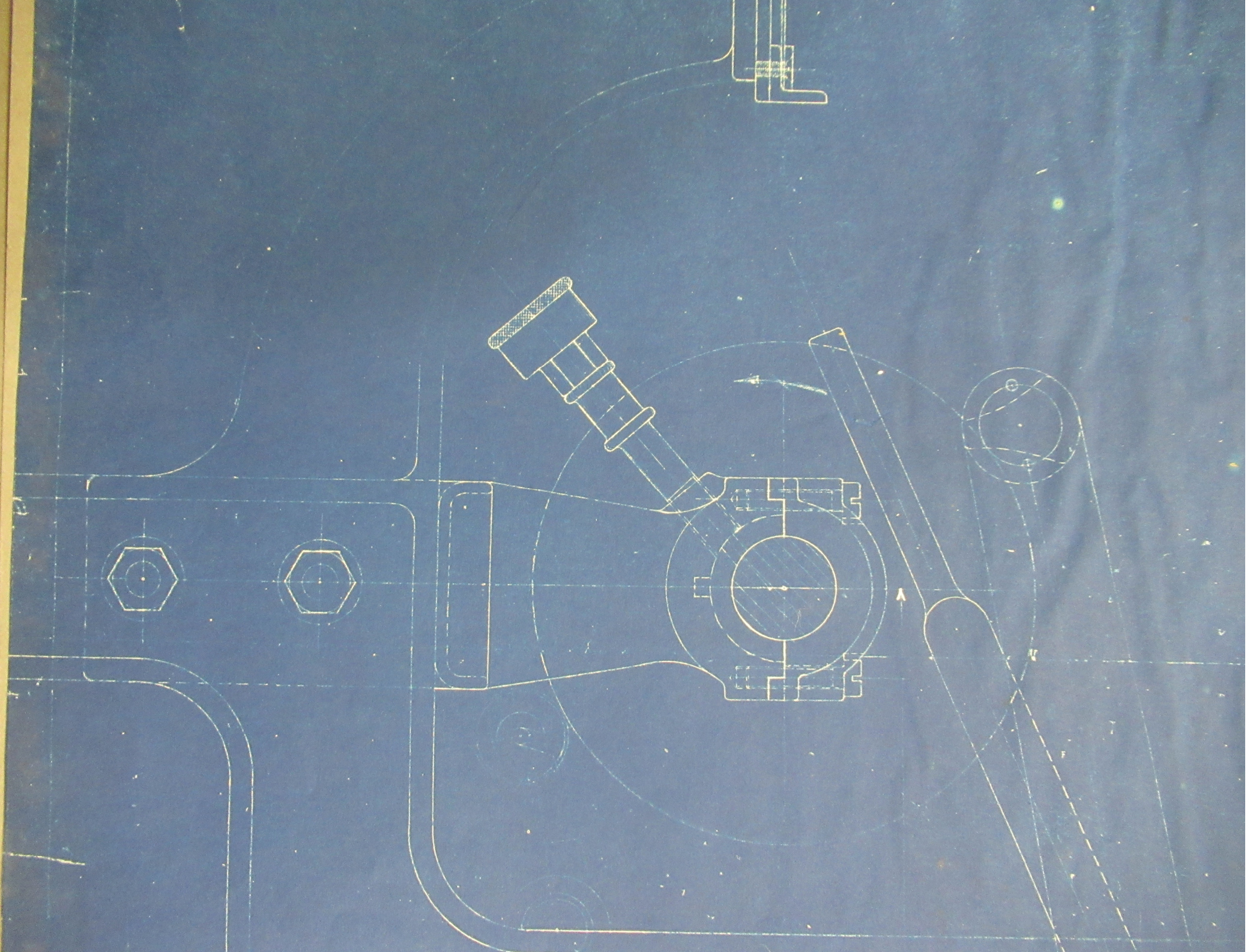
12 DMC 135-180

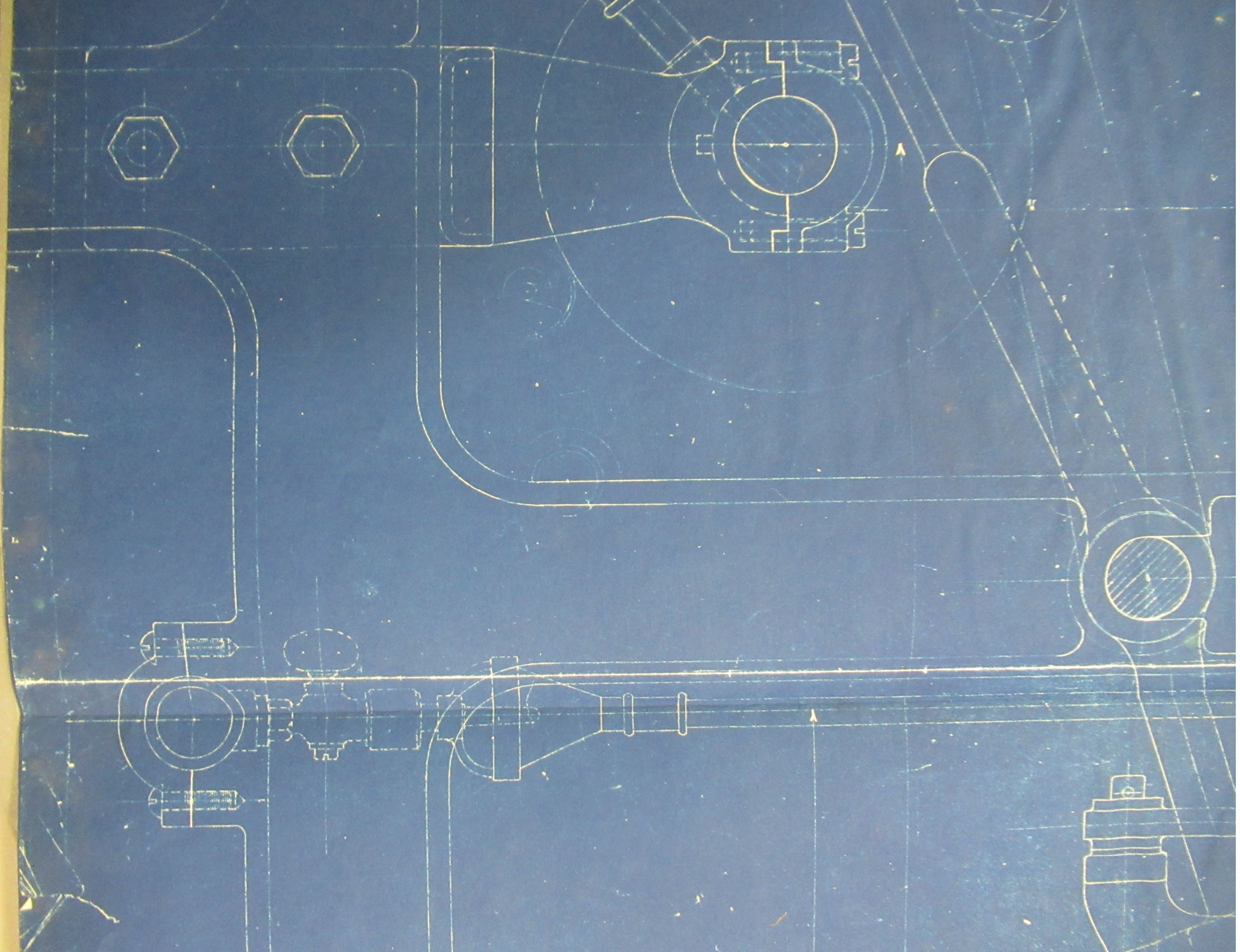
12DMC-135

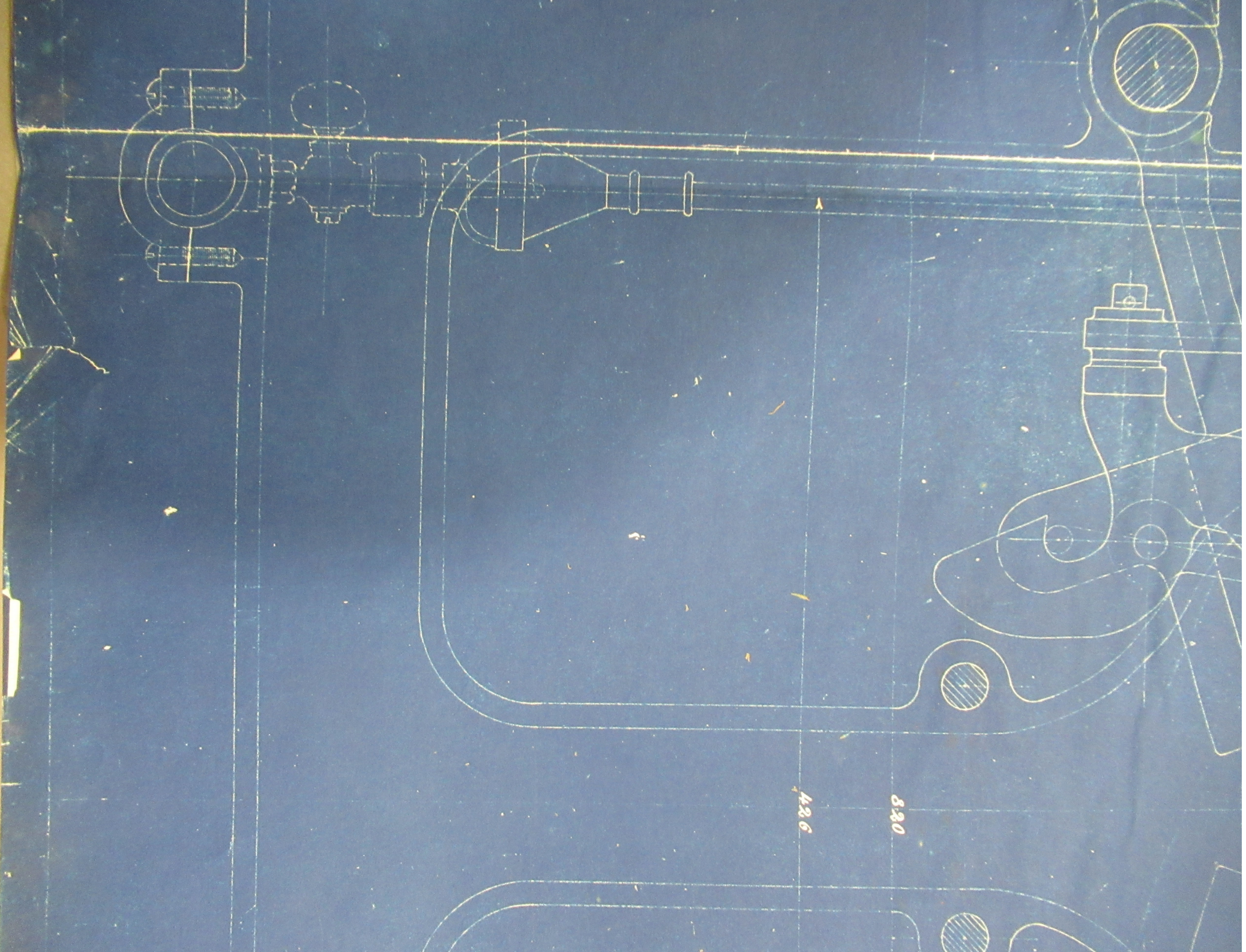


DOLFUS MIEG & C^o Snc
Fucina No. 3
Macchine a vapore
100 p. di lambour
200
Echelle: 1/1





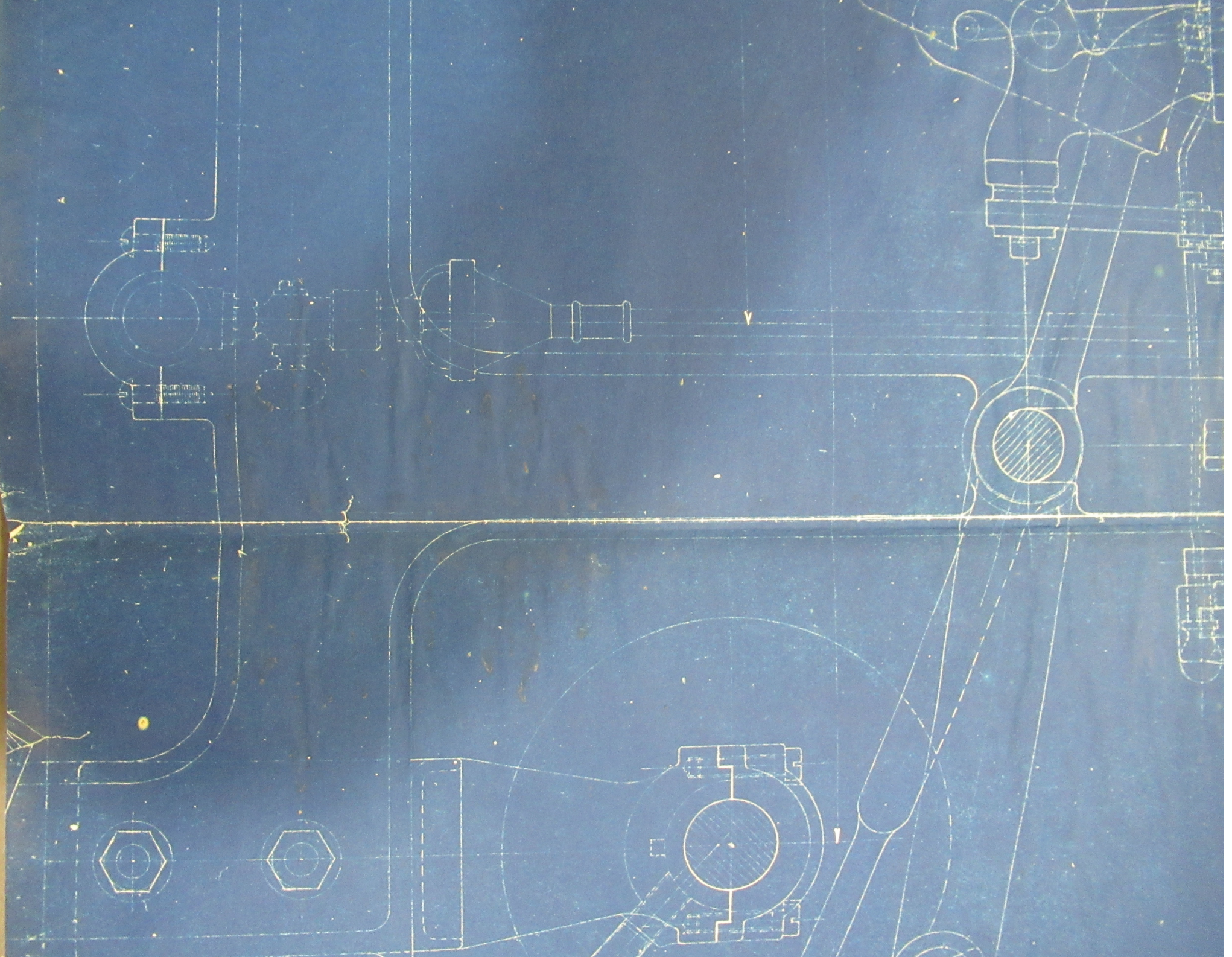




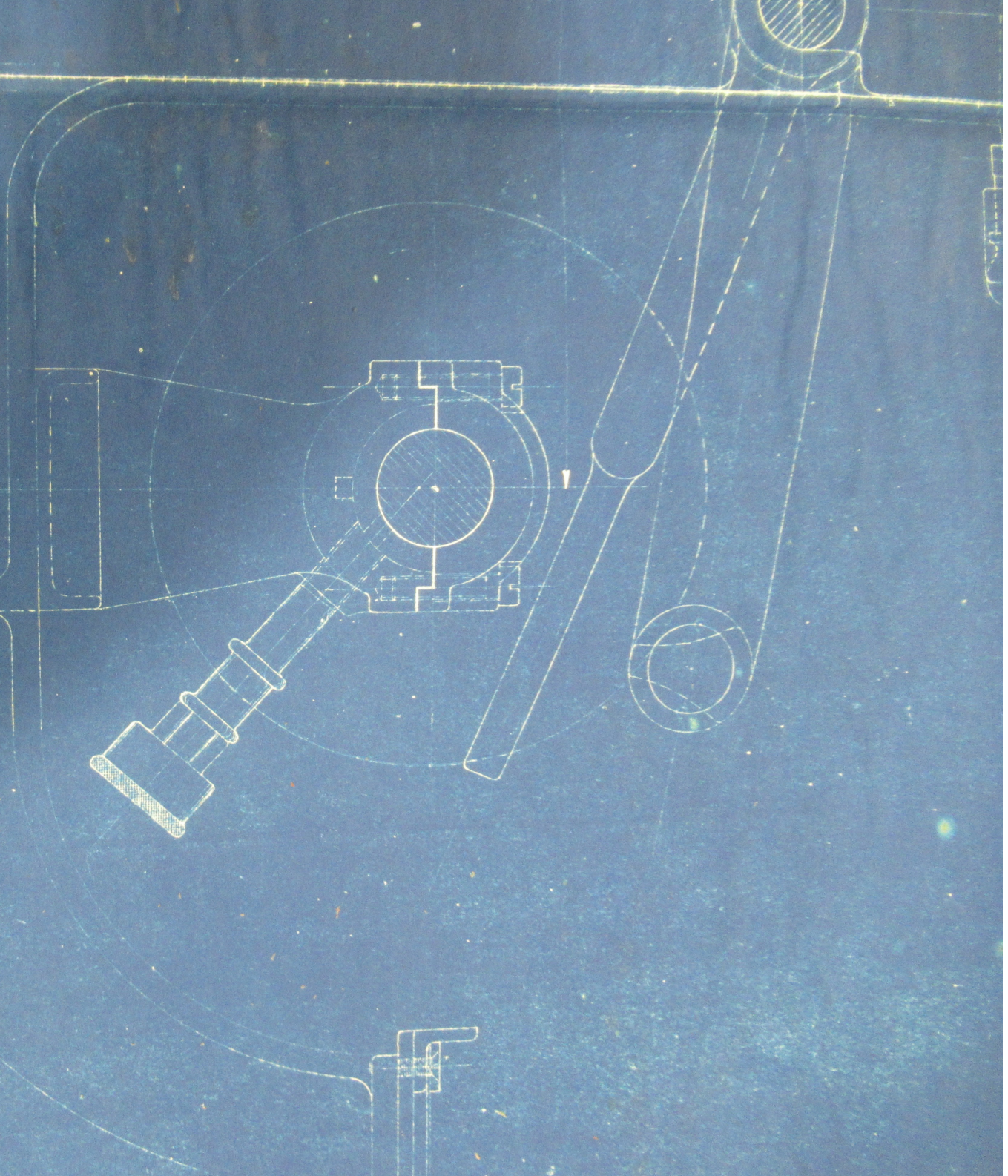
426

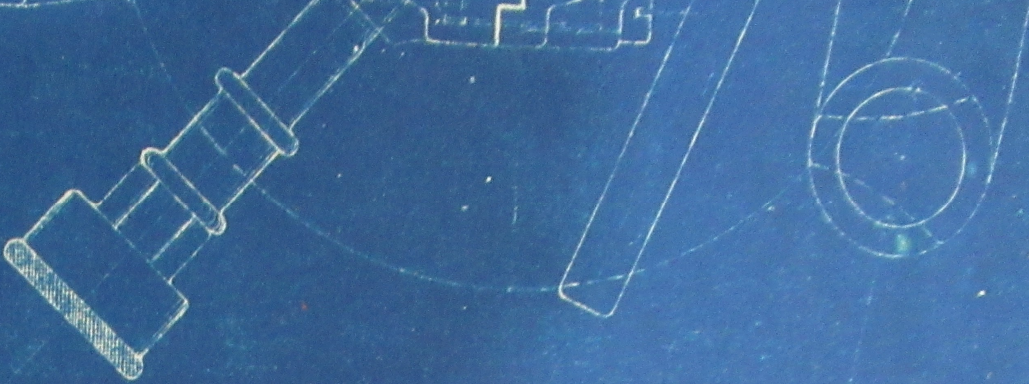
820





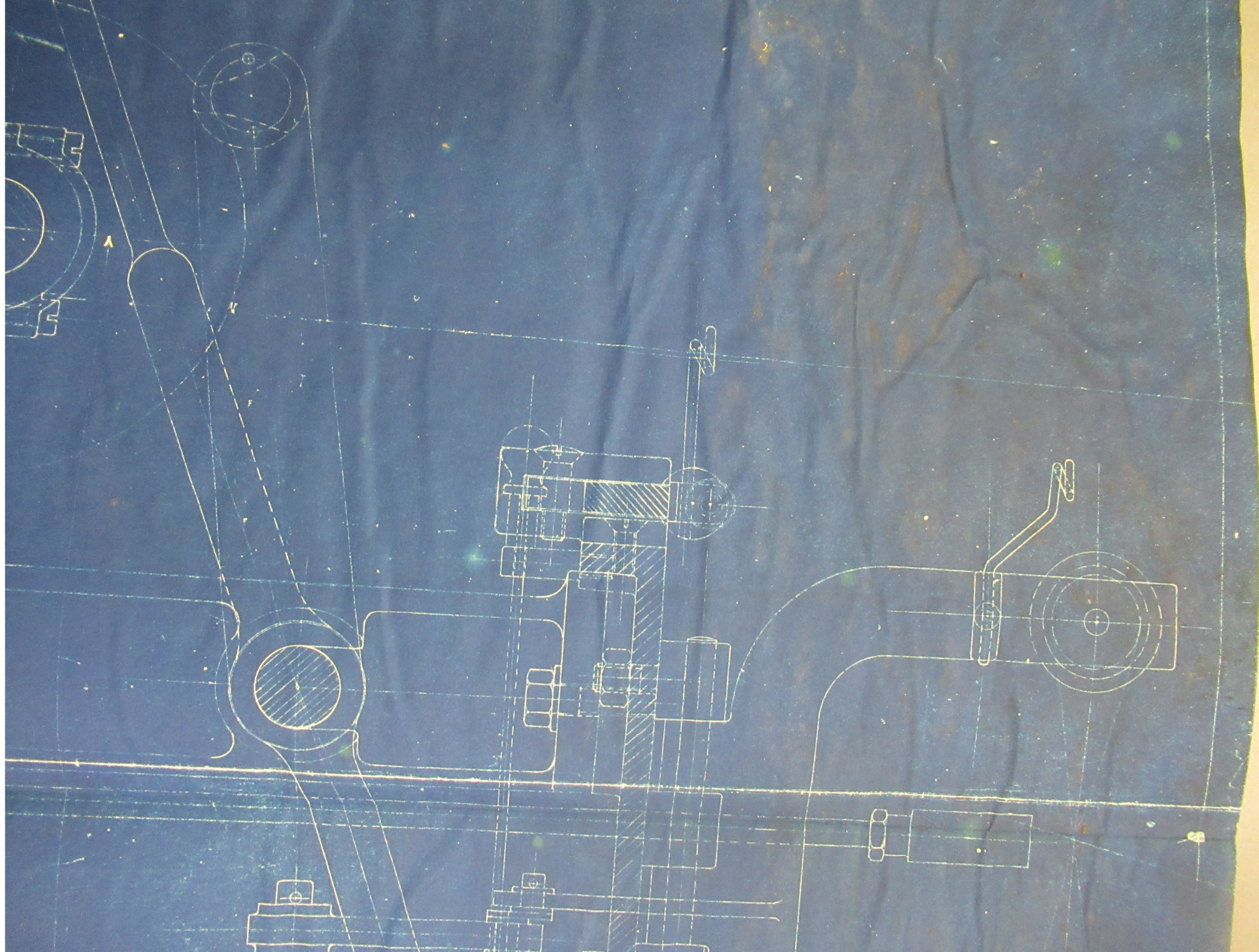
Date	Désignation spéciale	Compte
Echelle: 1:1.	<i>Machine à 106 points de Note:</i>	DOLLFUS III Fruissag

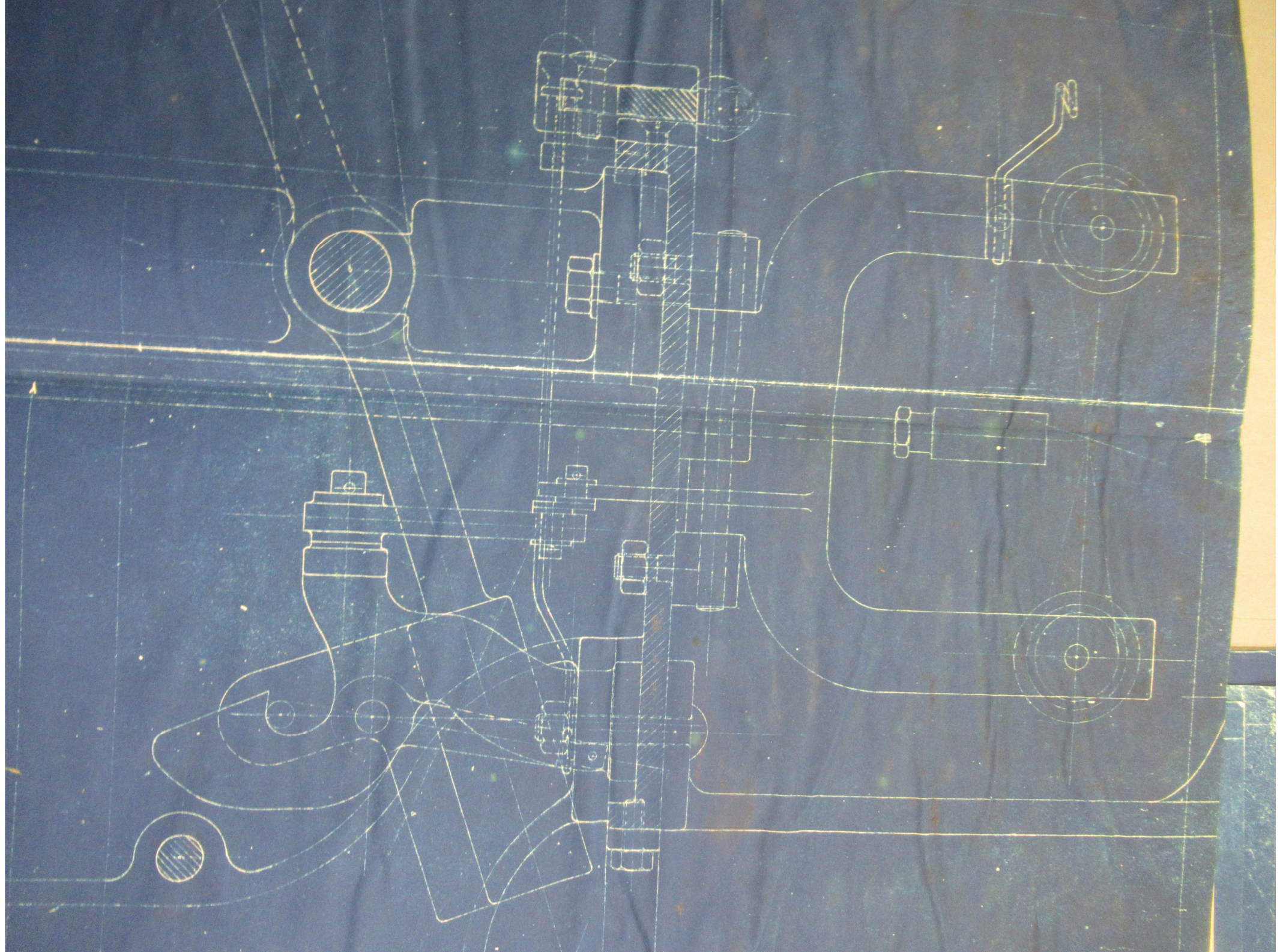




Date	Désignation spéciale	Compte
Echelle: 1/1.	<i>Fraisage III. Machine à gage à 106 petits tambours.</i>	DOLLFUS MIEG & C ^{ie} Société anonyme
	Date:	Dessiné par: <i>G. Rey.</i>

N° 13217.

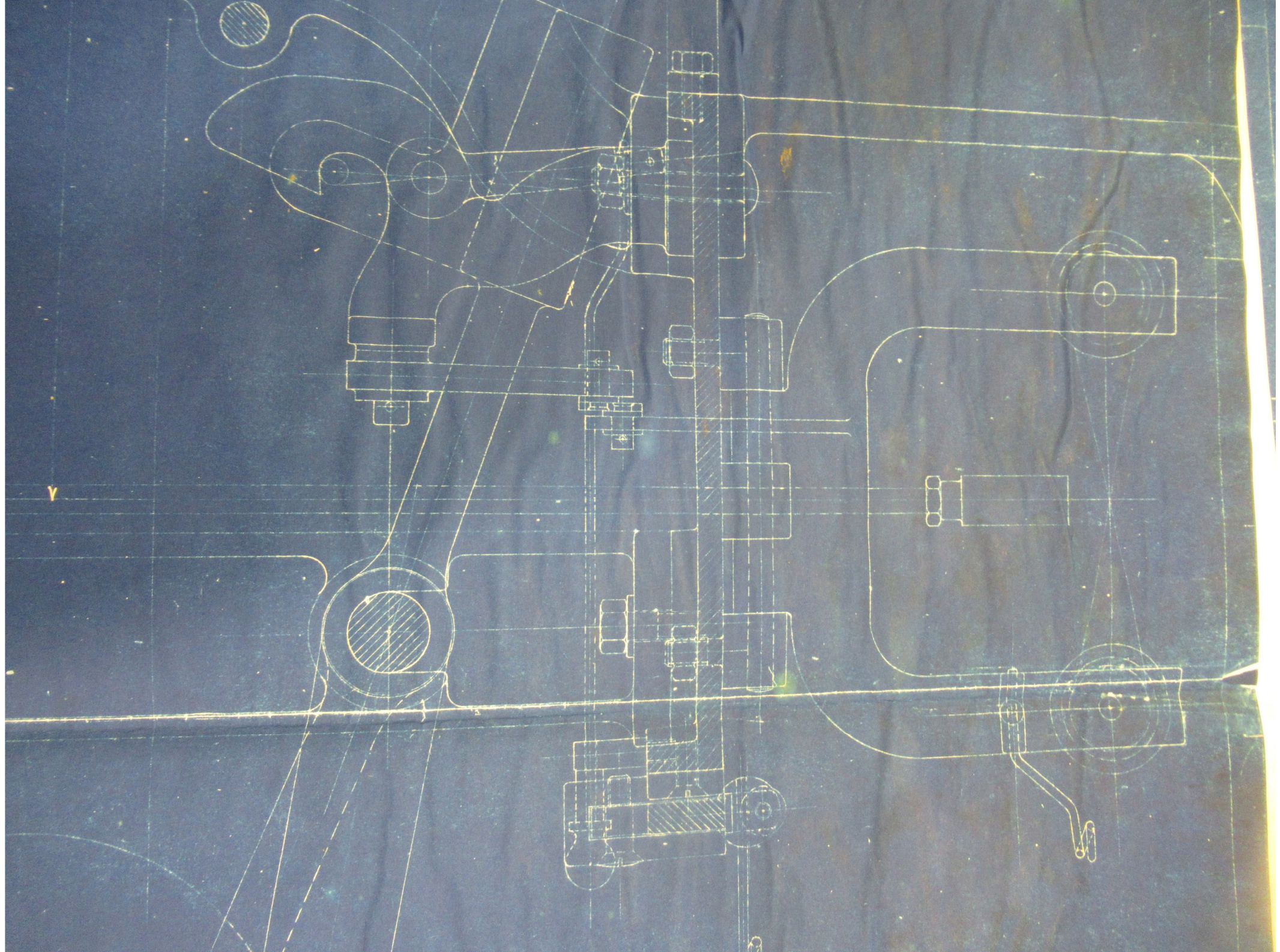


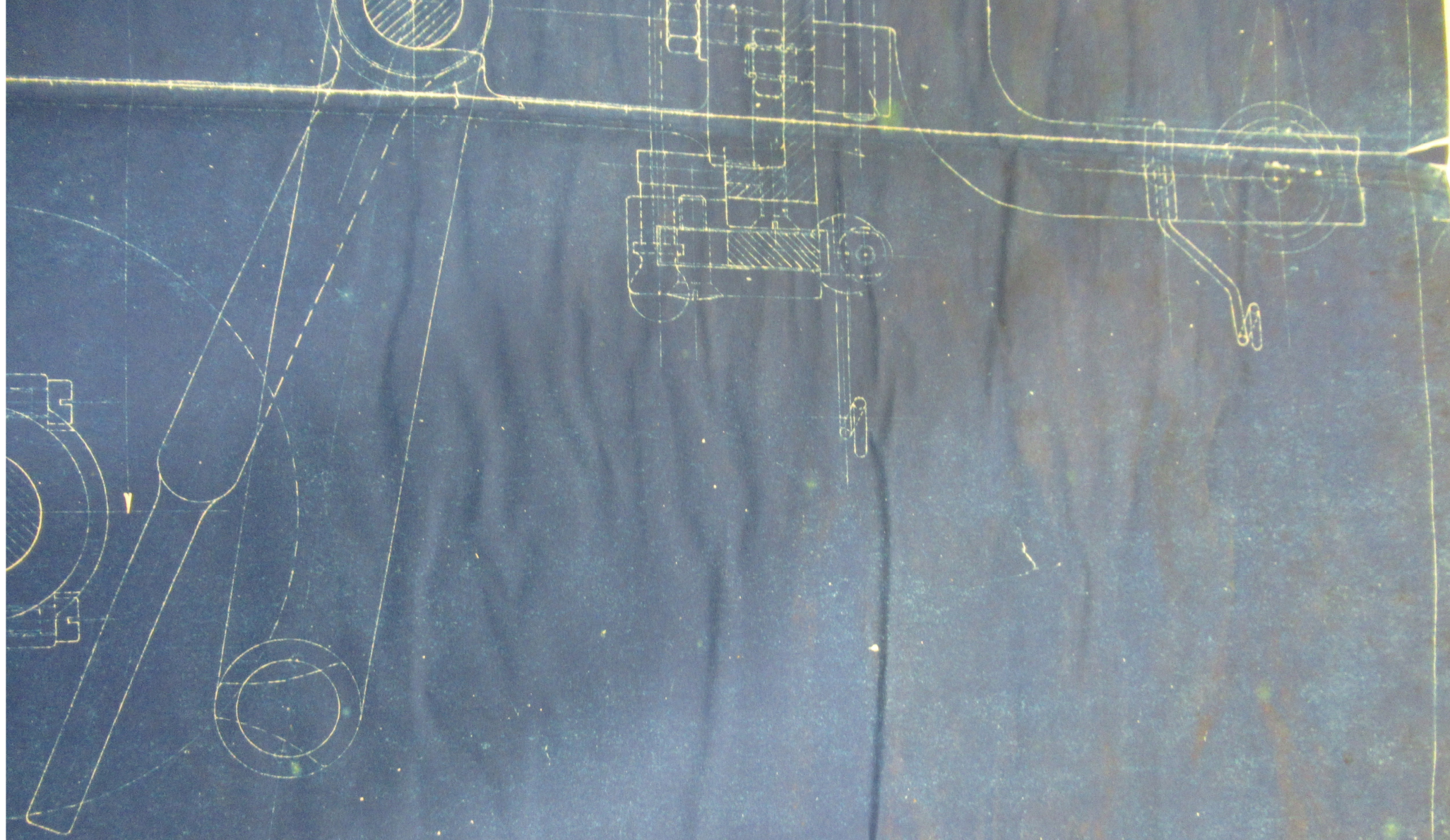


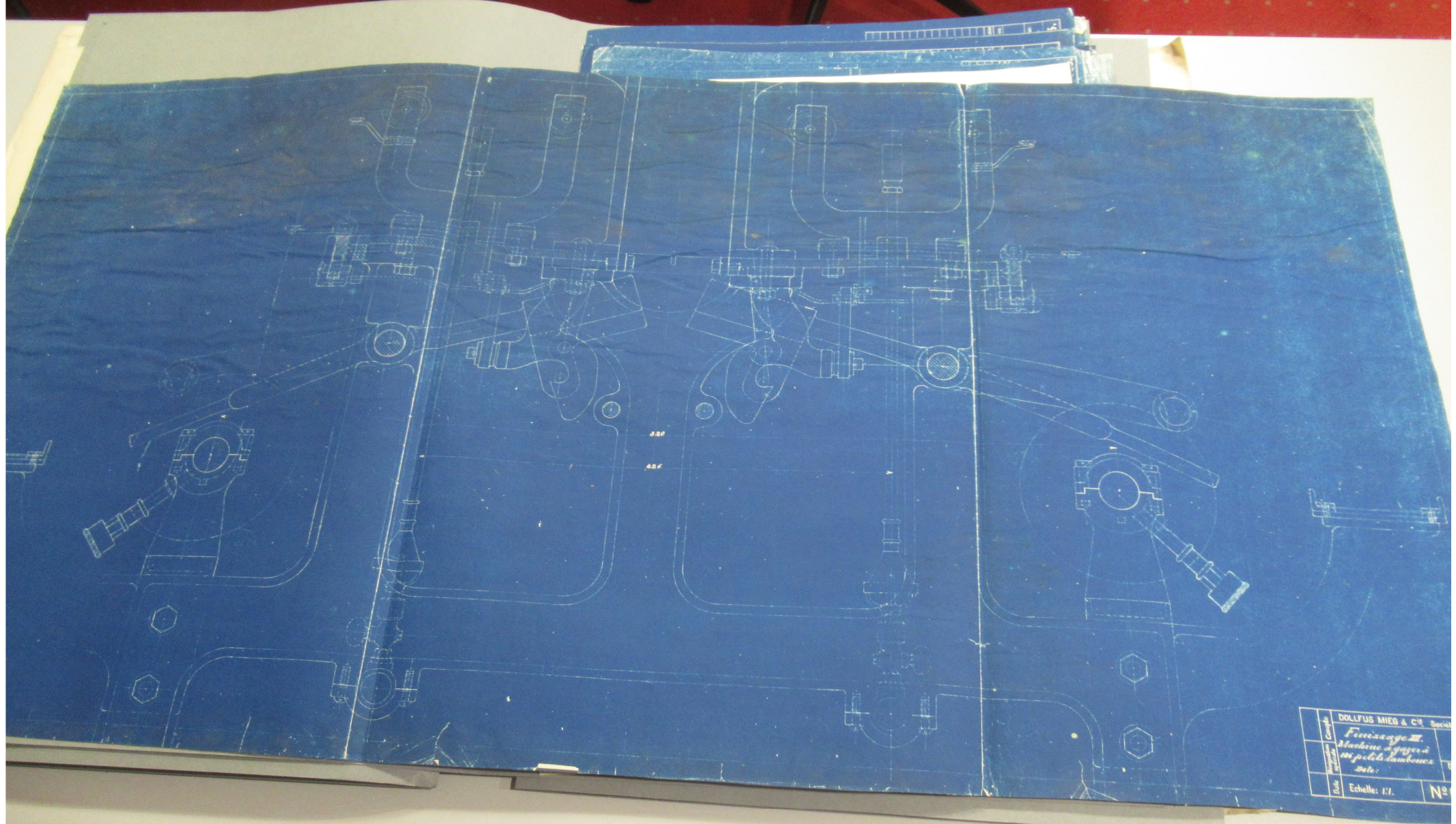


426

820







Date	18/11/1911	Création	
DOLLFUS MIEG & C ^{ie} Socié			
Fabrication de Machines à papier et à peindre les livres etc.			
Echelle: 1/1			N ^o