

DMC-270-285

D.M.C

PLANS D'ENSEMBLE DES ATELIERS

Année 1933

MULHOUSE	Filature à rez-de-chaussée Filature I Bâtiment à étages Filature II Filature II Mélange, battage et magasin de coton
BELFORT	Filature

Portefeuille N° 23

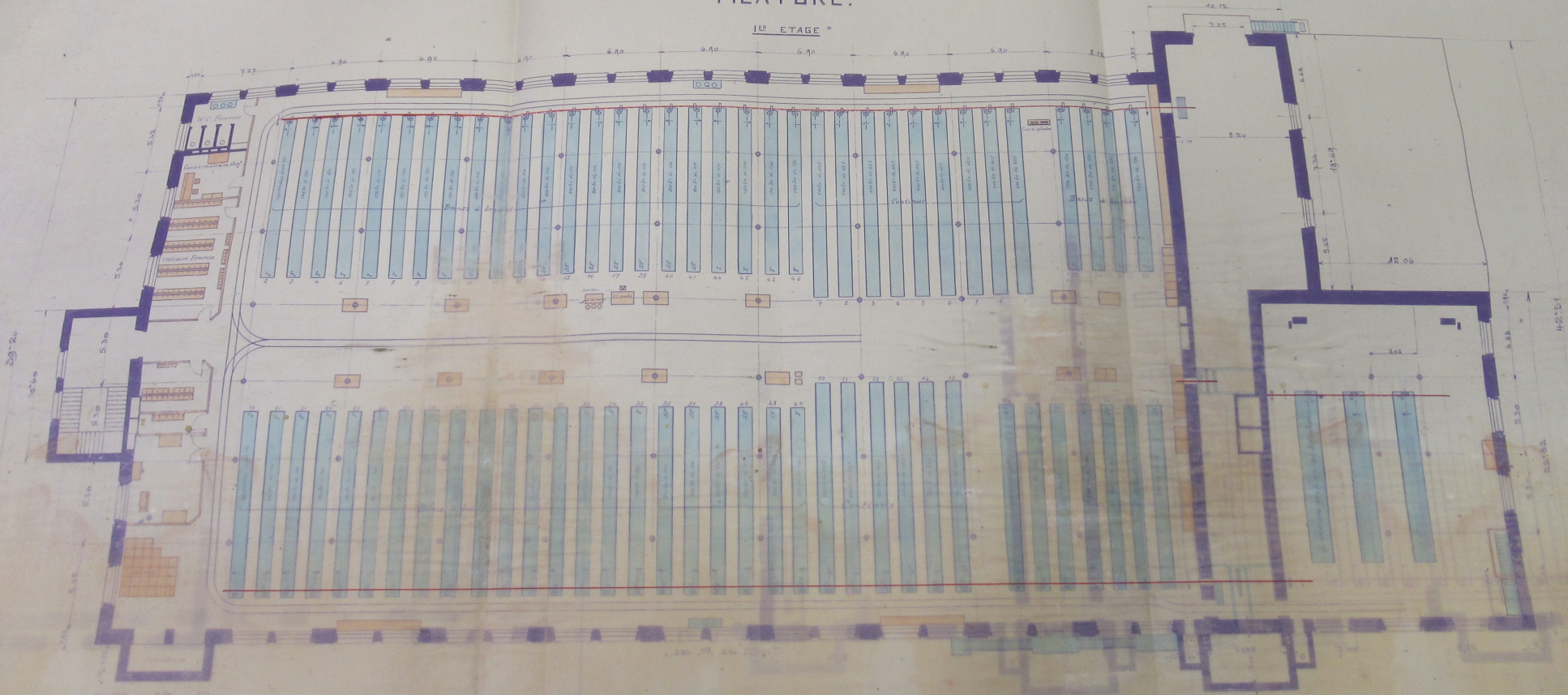
n° d'ordre	n° du plan	Désignation
1	-	Silature I. Bâtiment à étages.
2	18095	idem. Bâtiment à rez-de-chaussée.
3	-	Silature II. Ensemble.
4	19260	idem. Battage et Mélange.
5	18837	Silature Belfort. Ensemble.
6	17520	idem. Sous-sol.
7	17435	idem. Rez-de-chaussée.
8	17509	idem. 1 ^{er} étage.
9	17510	idem. 2 ^{me} étage.
10	17518	idem. 3 ^{me} étage.
11	-	idem. Façades principales.
12	17384	idem. Façades latérales.
13	-	Silature I. Agrandissement du bâtiment à rez-de-chaussée. 1903.
14	-	idem. idem.
15	2485	idem. Agrandissement du local des cardes 1910.
16	2502	idem. Agrandissement du local des bancs à broches.
17	5779	Silature Belfort. Installation pour aspirer les poussières pendant le déboufrage combinée avec la ventilation de la salle.

720nC237

DOLLFUS - MIEG & C^{ie} SOCIÉTÉ ANONYME ETABLISSEMENT DE BELFORT.

FILATURE.

1^{er} ETAGE



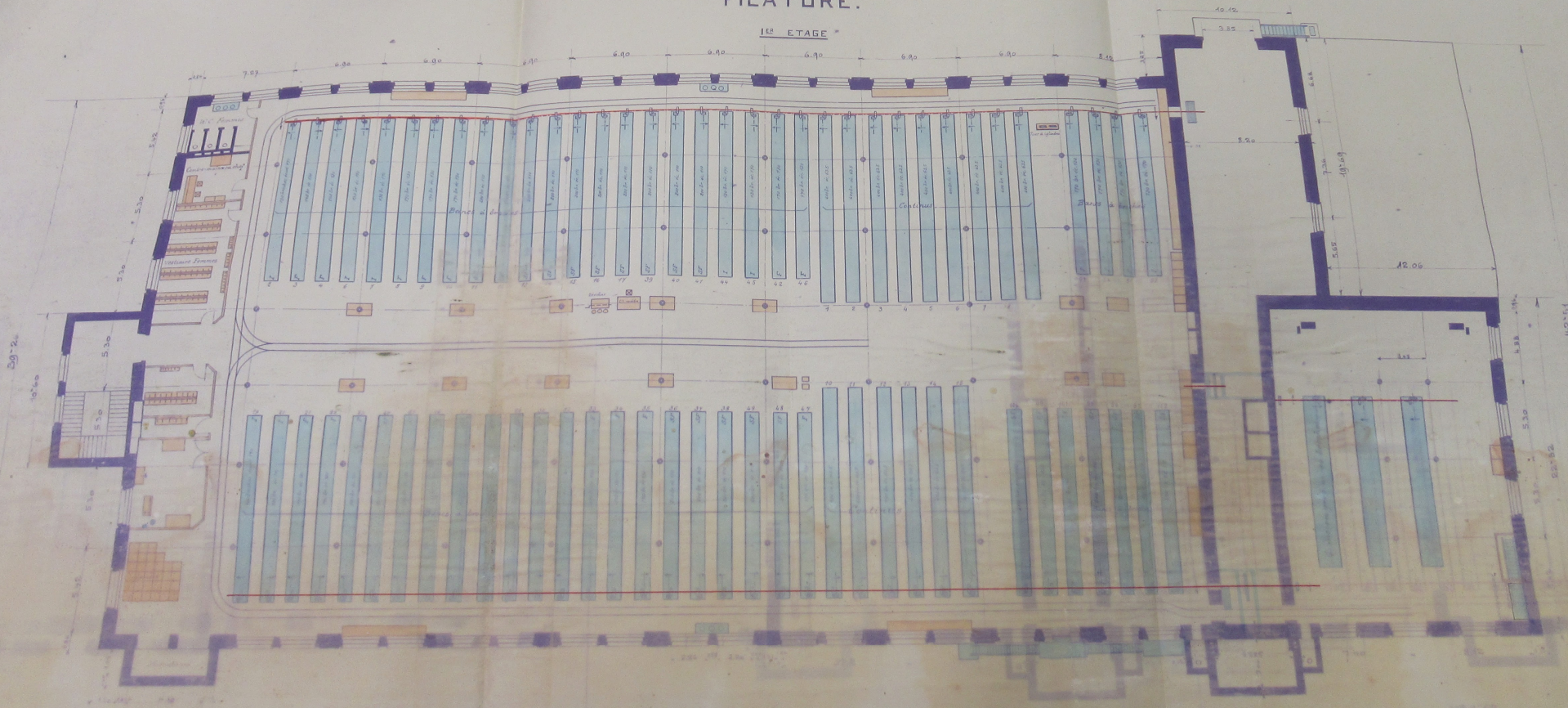
ENCOMBREMENT DES MACHINES.

N° 17
ECHELLE

DOLLFUS-MIEG & C^{IE} SOCIÉTÉ ANONYME ÉTABLISSEMENT DE BELFORT.

FILATURE.

1^{ER} ETAGE



9549
ENCOMBREMENT DES MACHINES.

N° 1750
ÉCHELLE

0.60

5.30

5.30

5.30

5.42

0.96

0.84

7.27

6.9

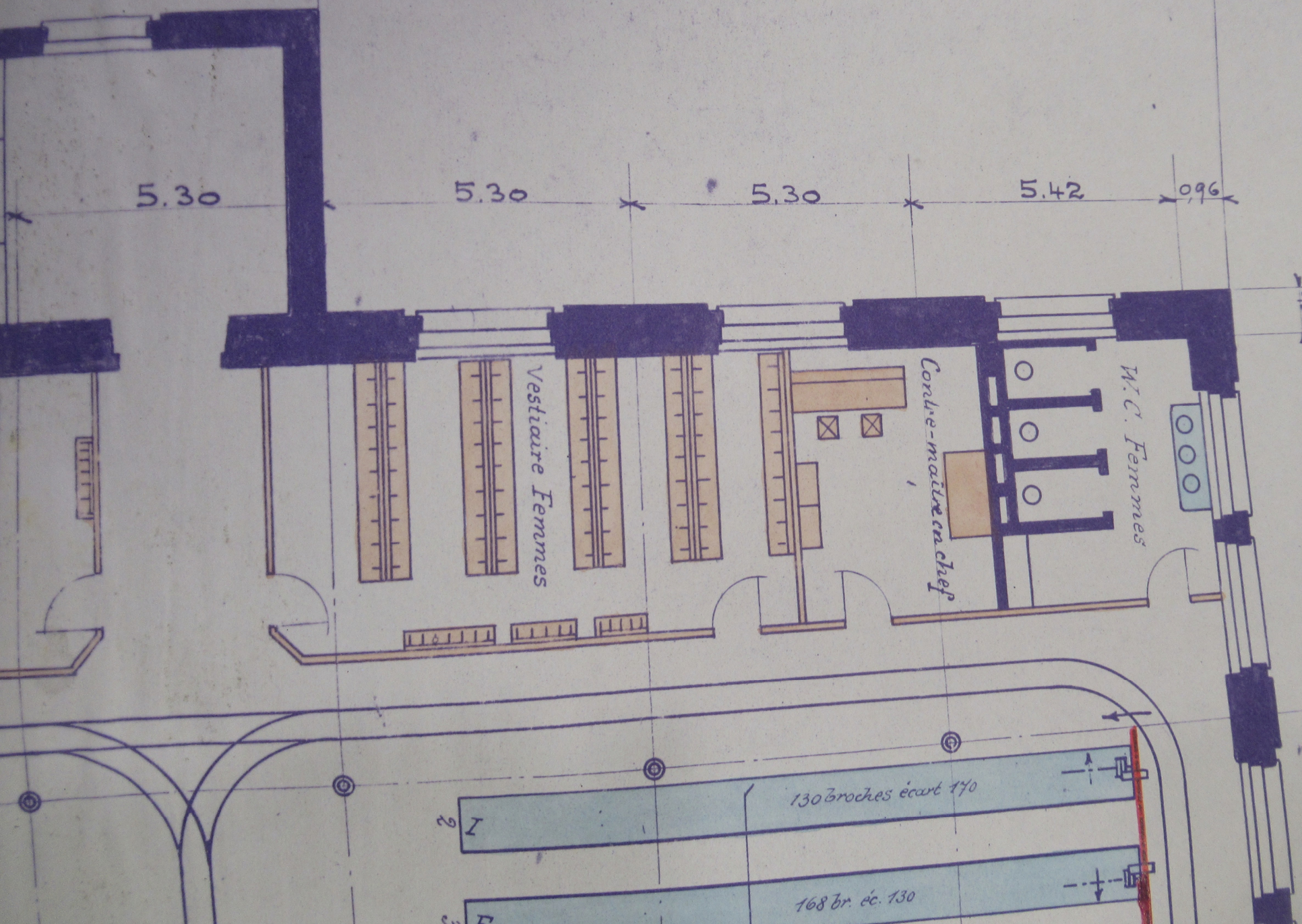
Vestiaire Femmes

Condit-maitre en chef

M.C. Femmes

130 broches écart 140

168 br. éc. 130



39-26

10.60

5.42

5.30

5.30

5.30

5.30

5.

Vestiaire Femmes

130 broches en 190

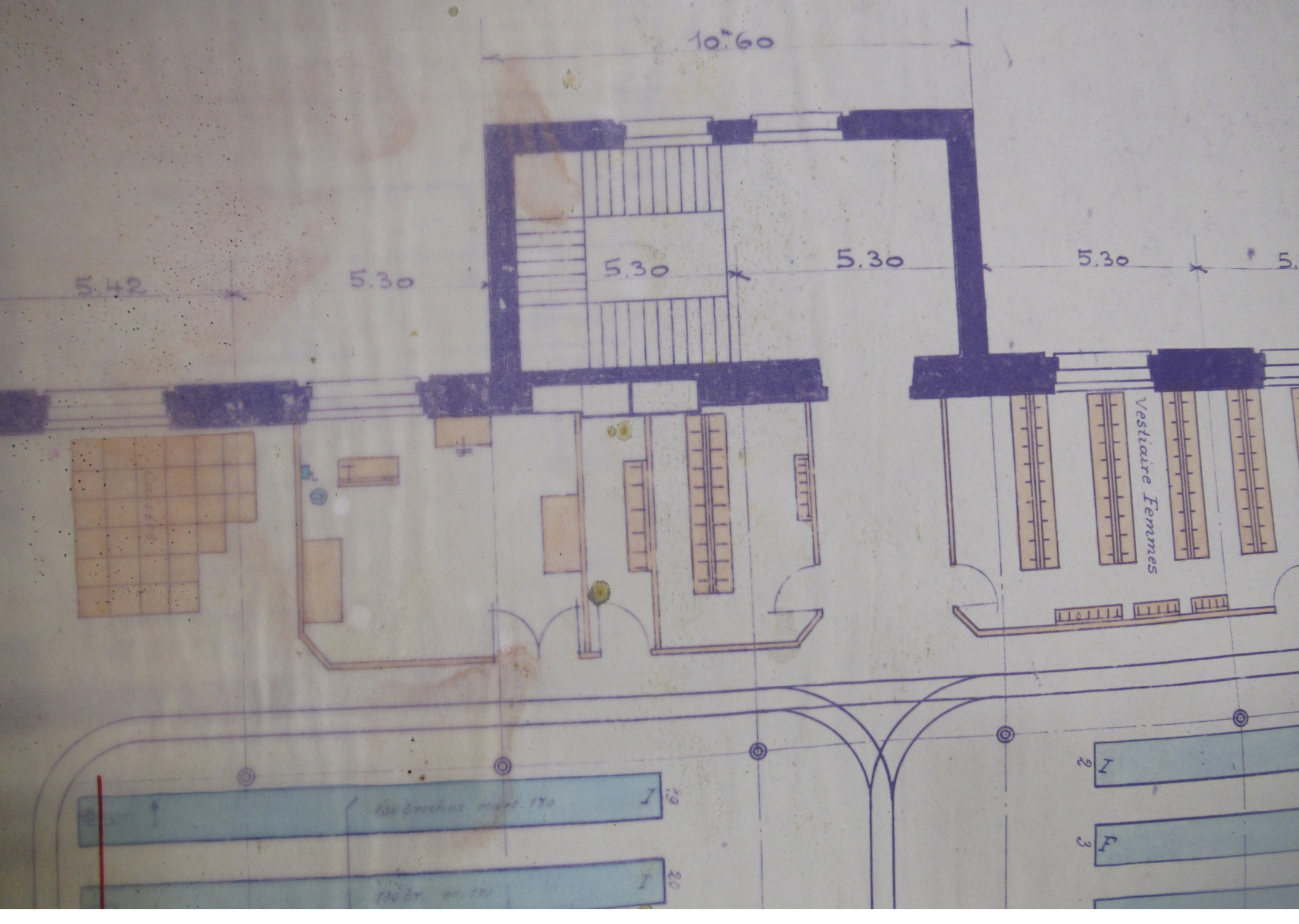
19

130 br. en 190

20

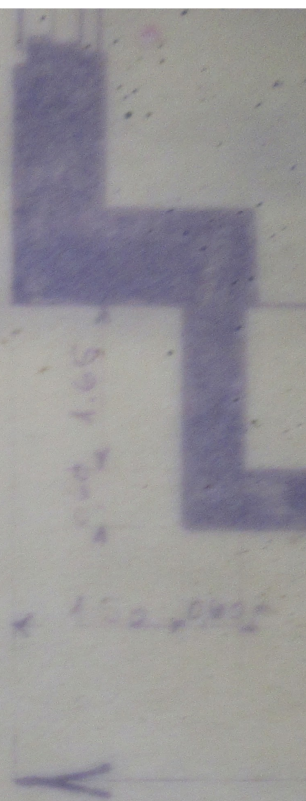
2

3

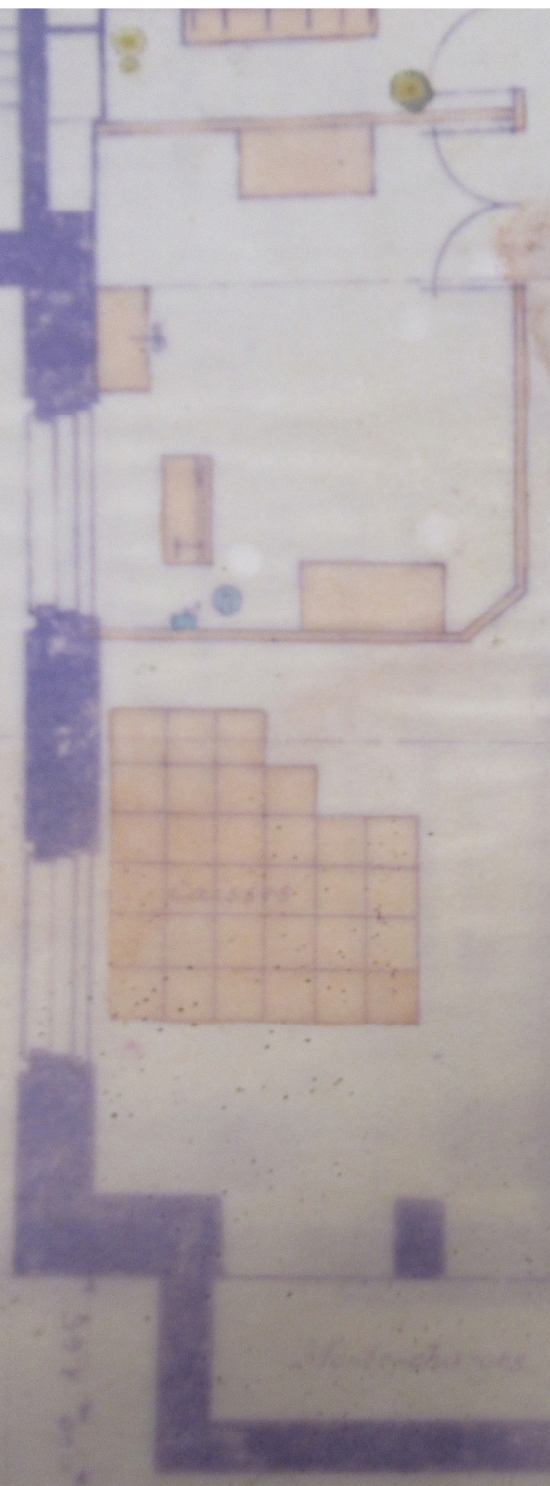


RÉVISÉ

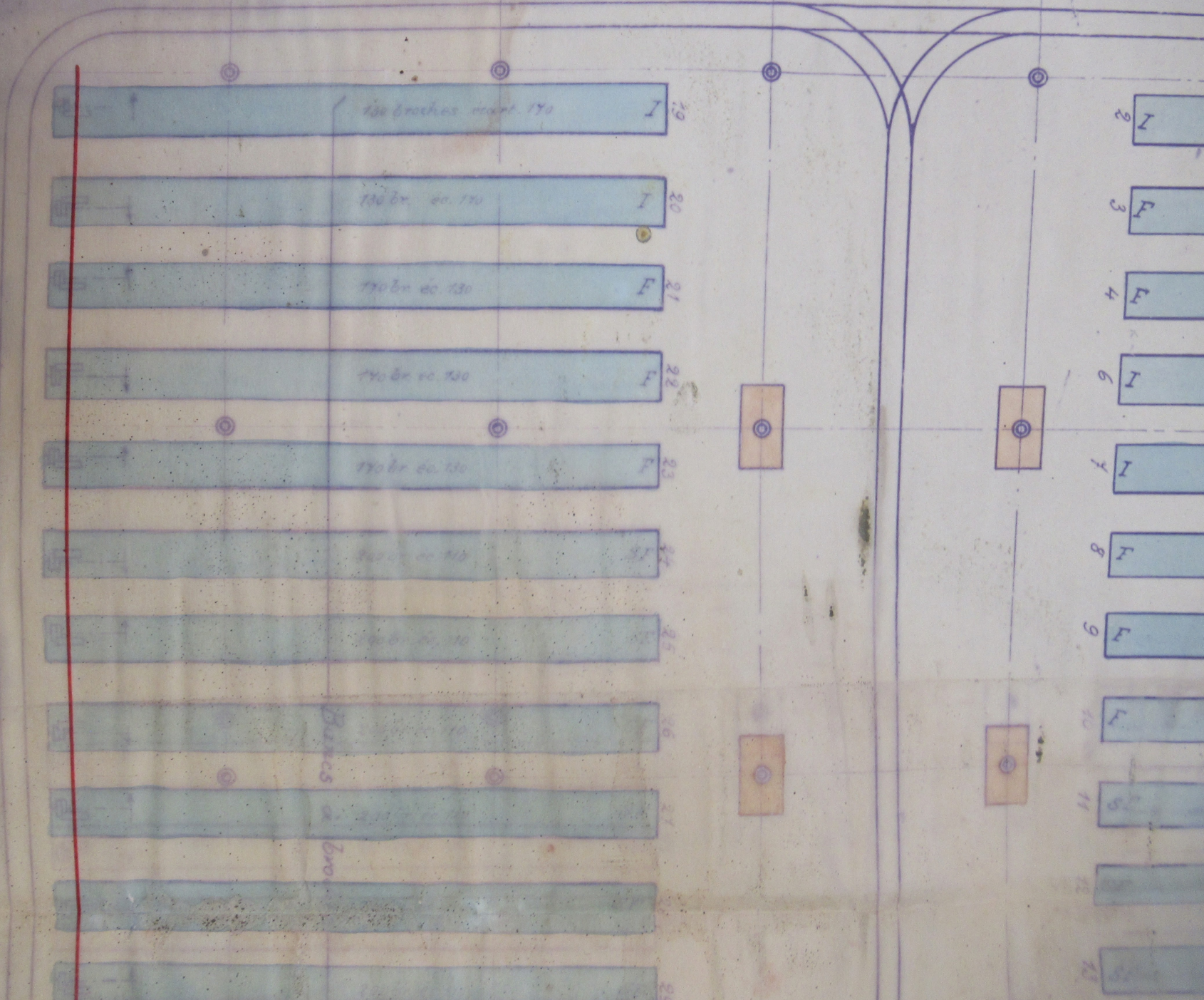
8-5-30.		



0.60
5.42
5.30



150.000
H 30



130 broches court. 170 I 19

130 br. co. 170 I 20

170 br. co. 130 F 21

170 br. co. 130 F 22

170 br. co. 130 F 23

170 br. co. 130 F 24

170 br. co. 130 F 25

Bancs de bro
170 br. co. 130 F 26
170 br. co. 130 F 27

2 I

3 F

4 F

5 I

6 I

8 F

9 F

10 F

11 S

12 S

13 S

portes

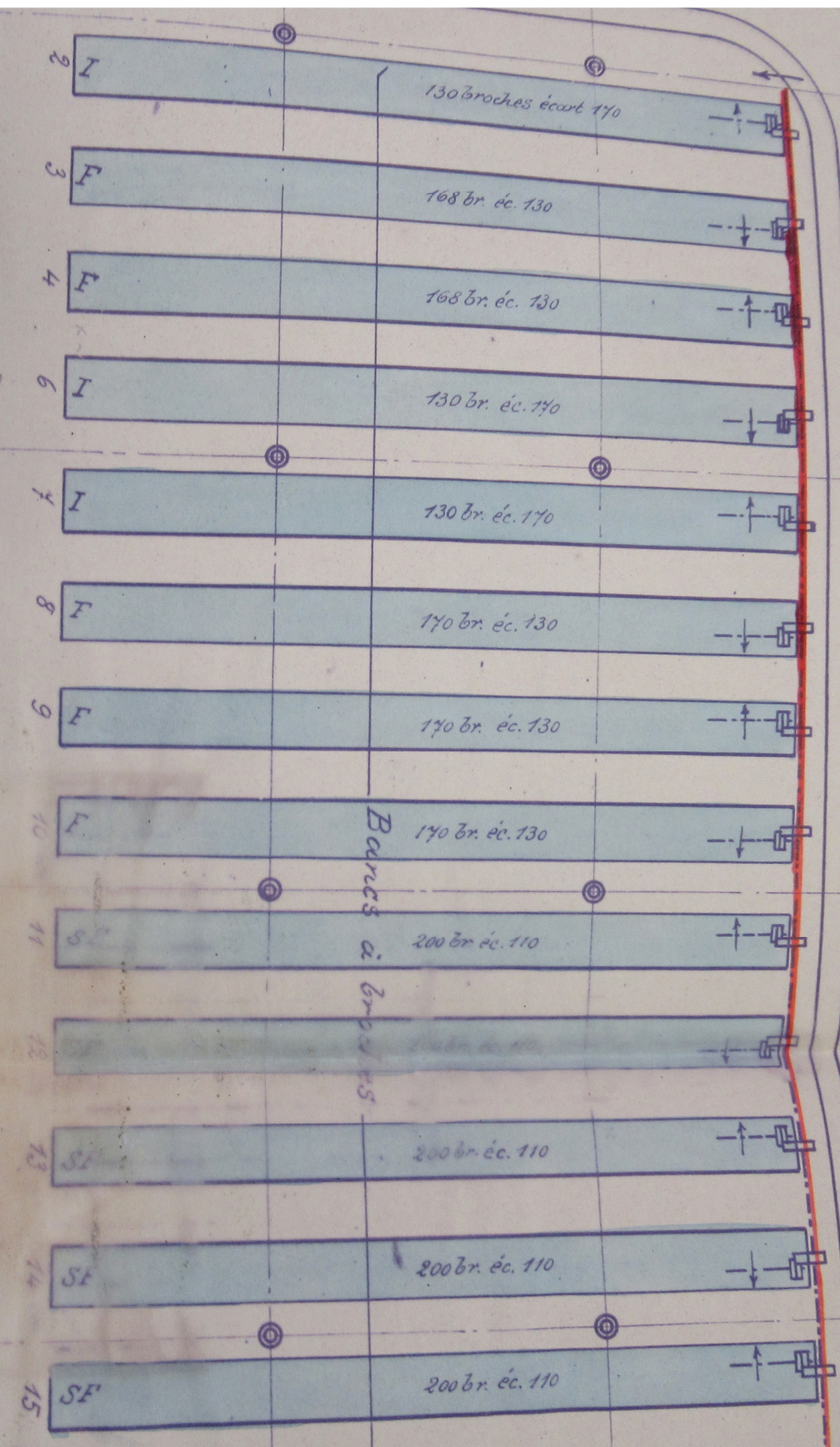
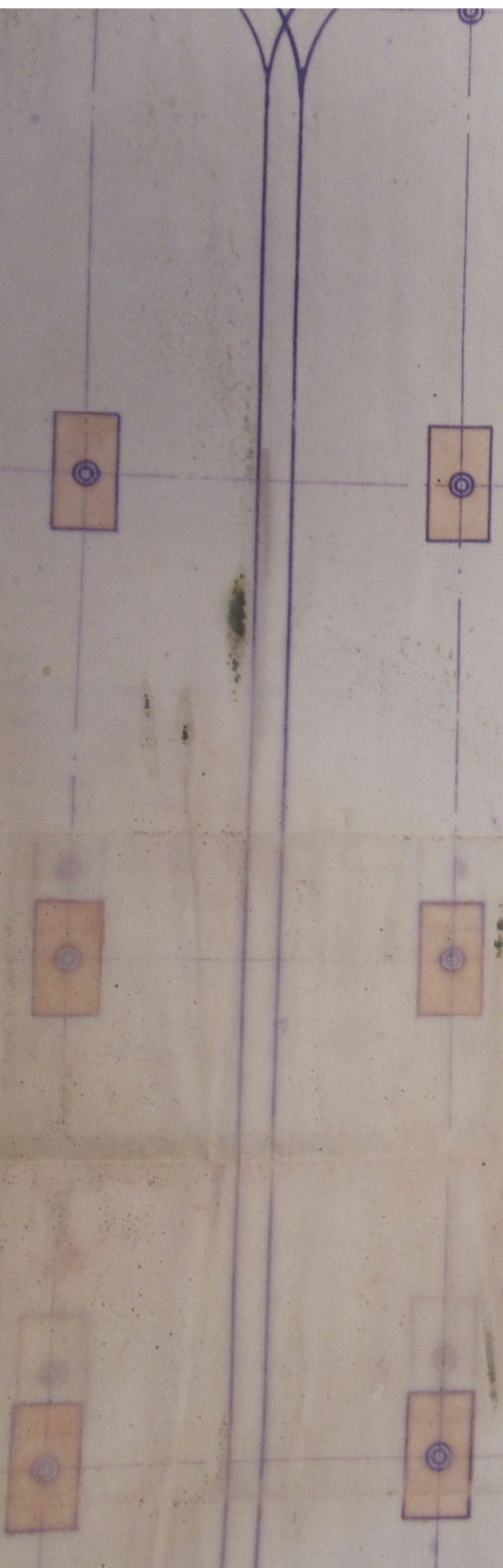
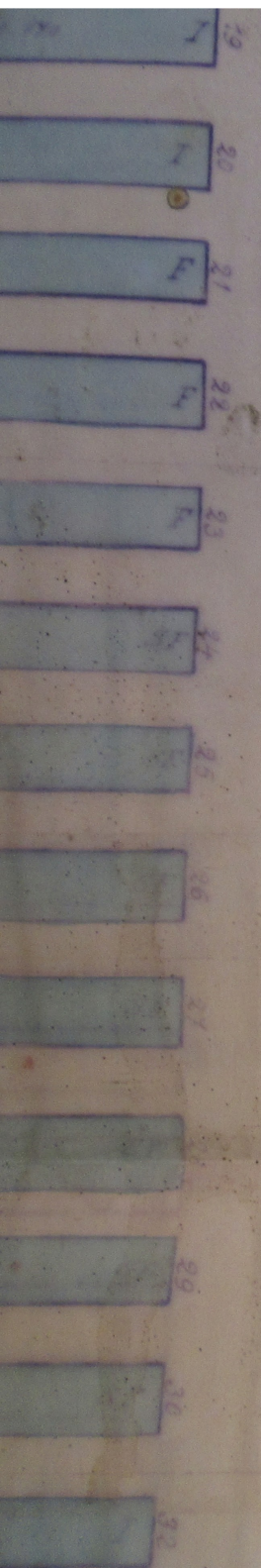
130 broches écart. 170

100 br. éc. 170

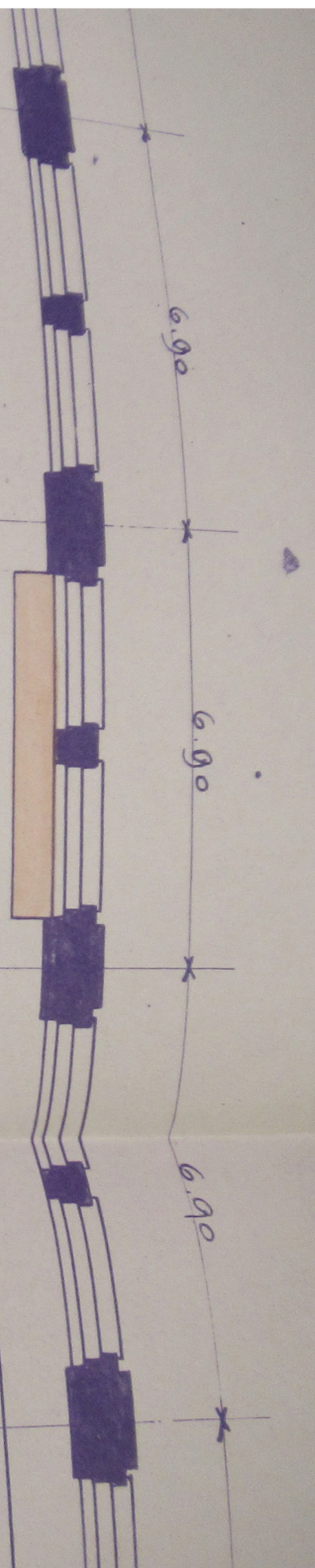
170 br. éc. 130

170 br. éc. 130

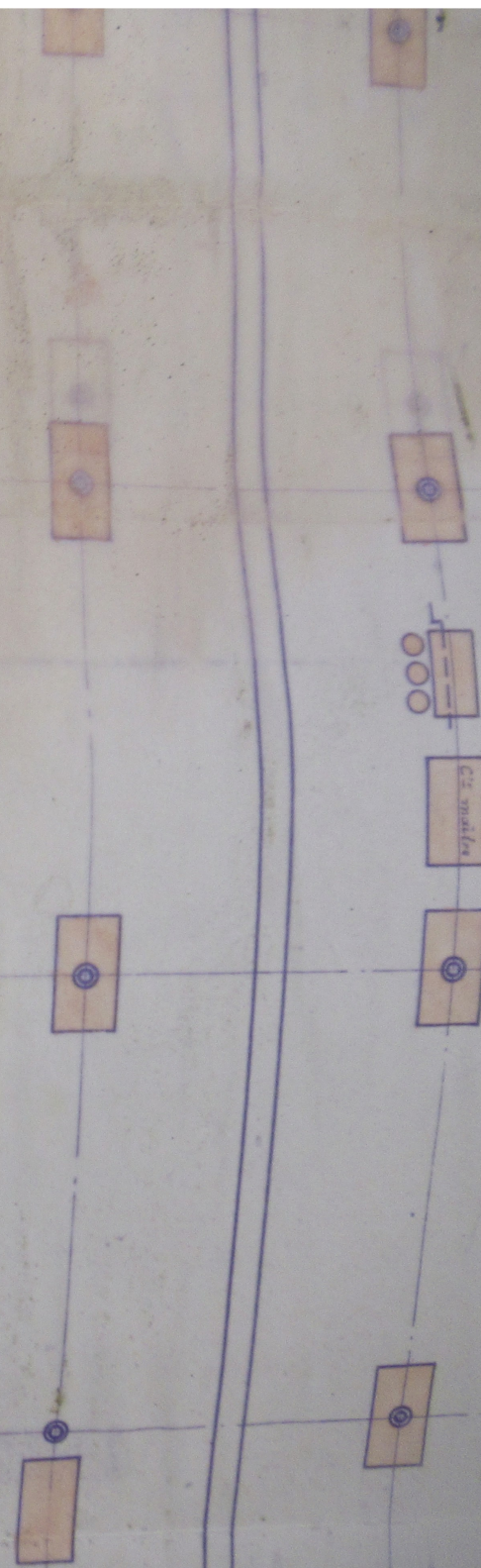
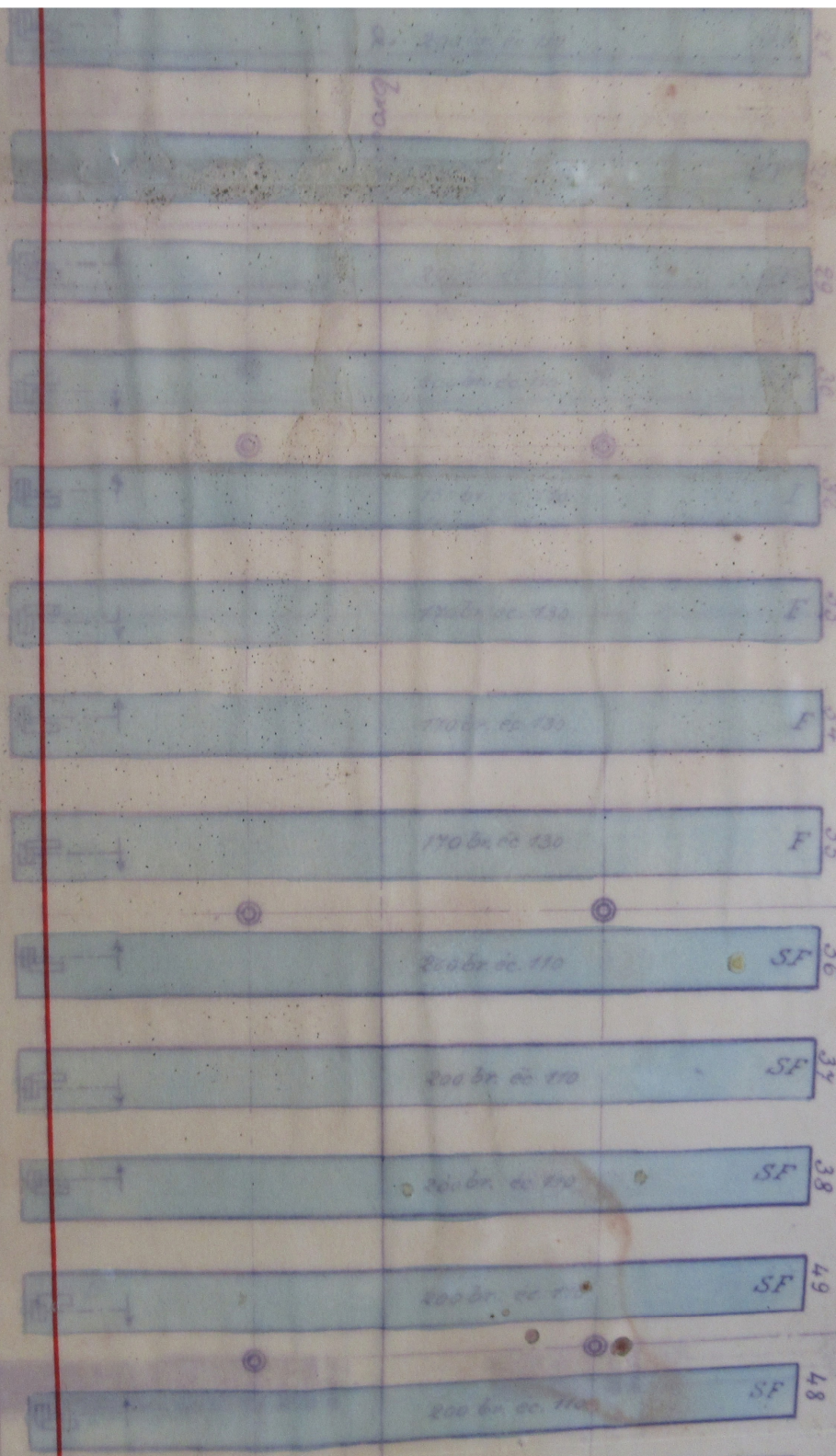
170 br. éc. 130



Barres à broches

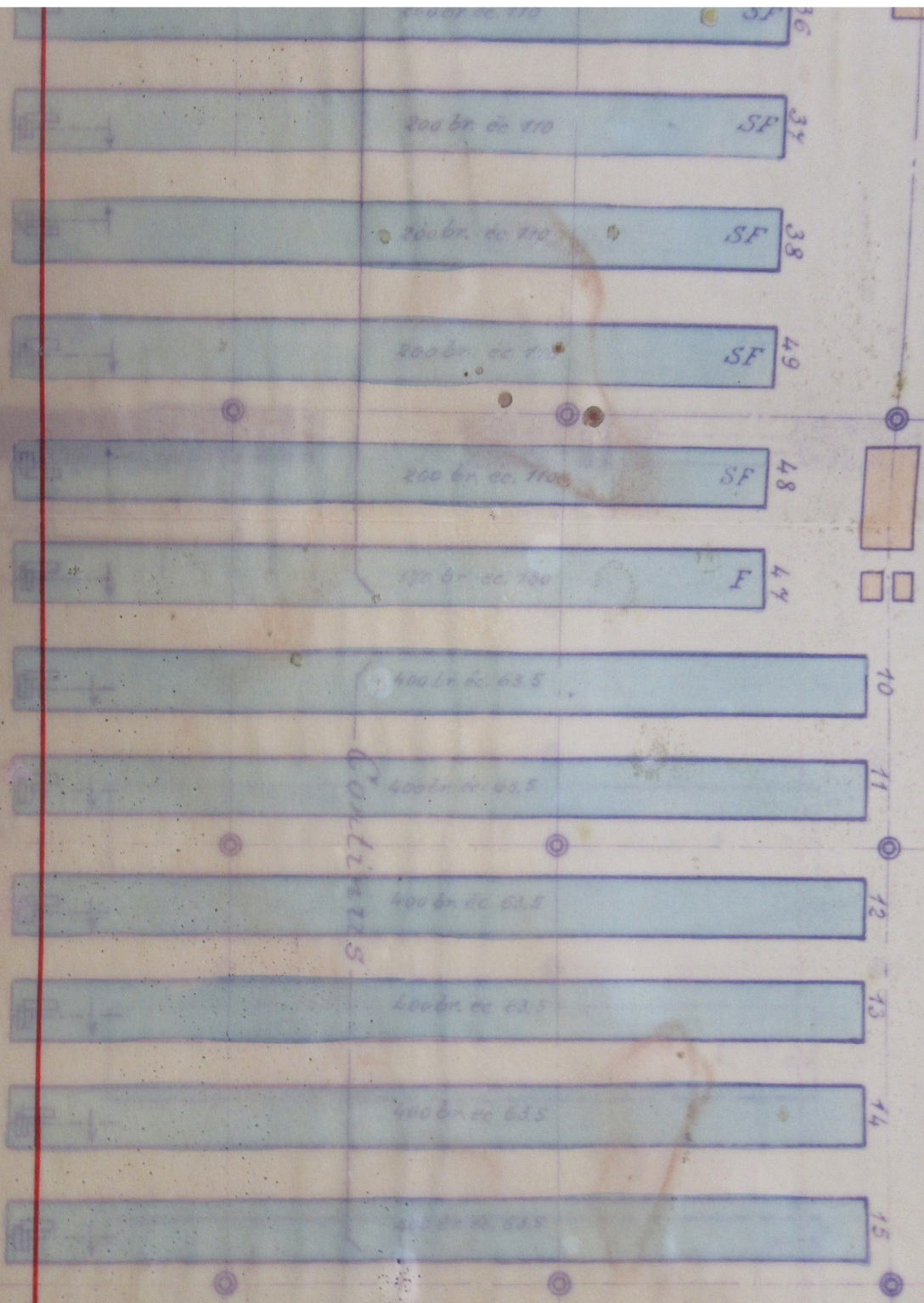


220 259 220 220 220



93-49

226 399, 226 513, 226

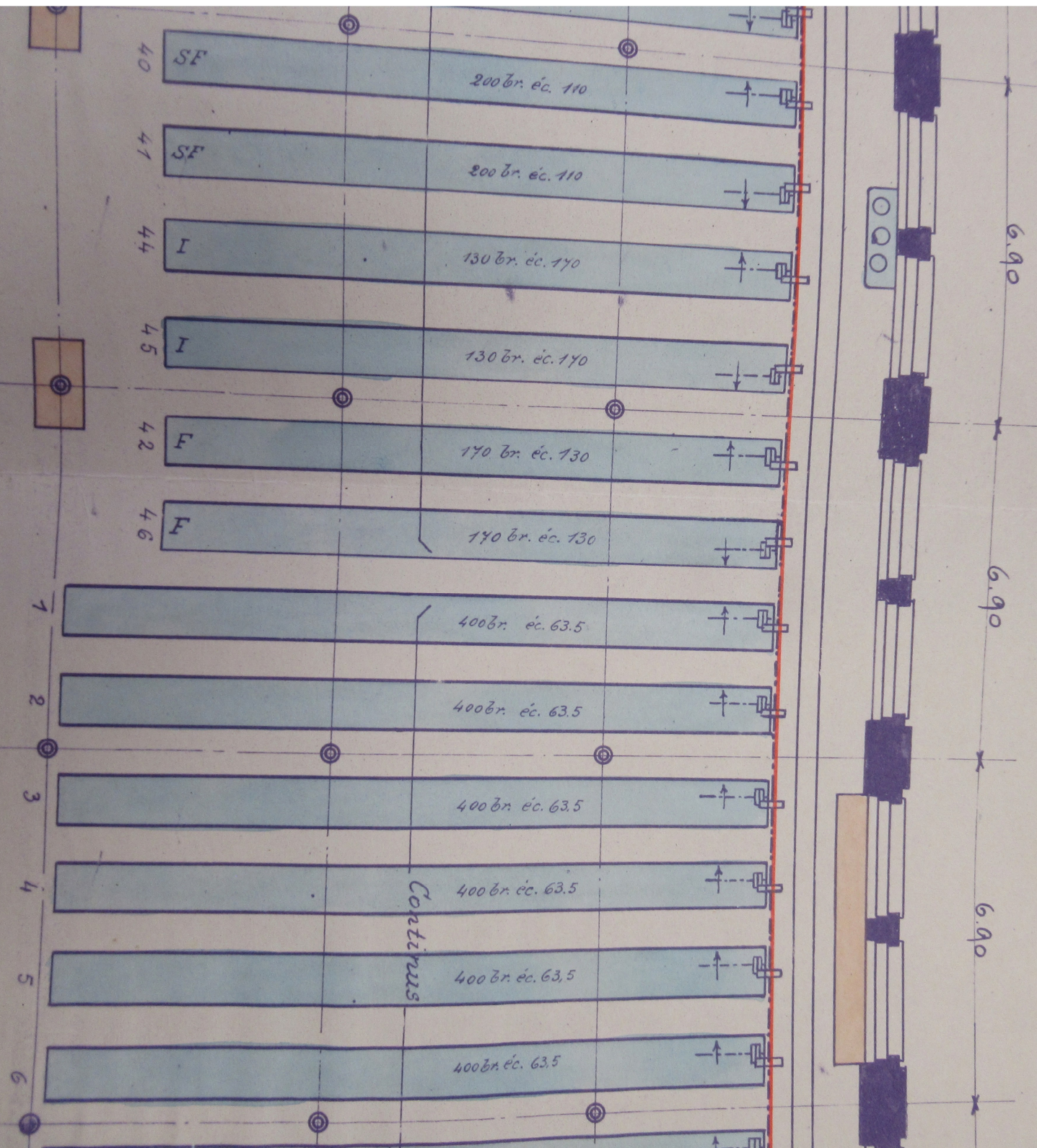


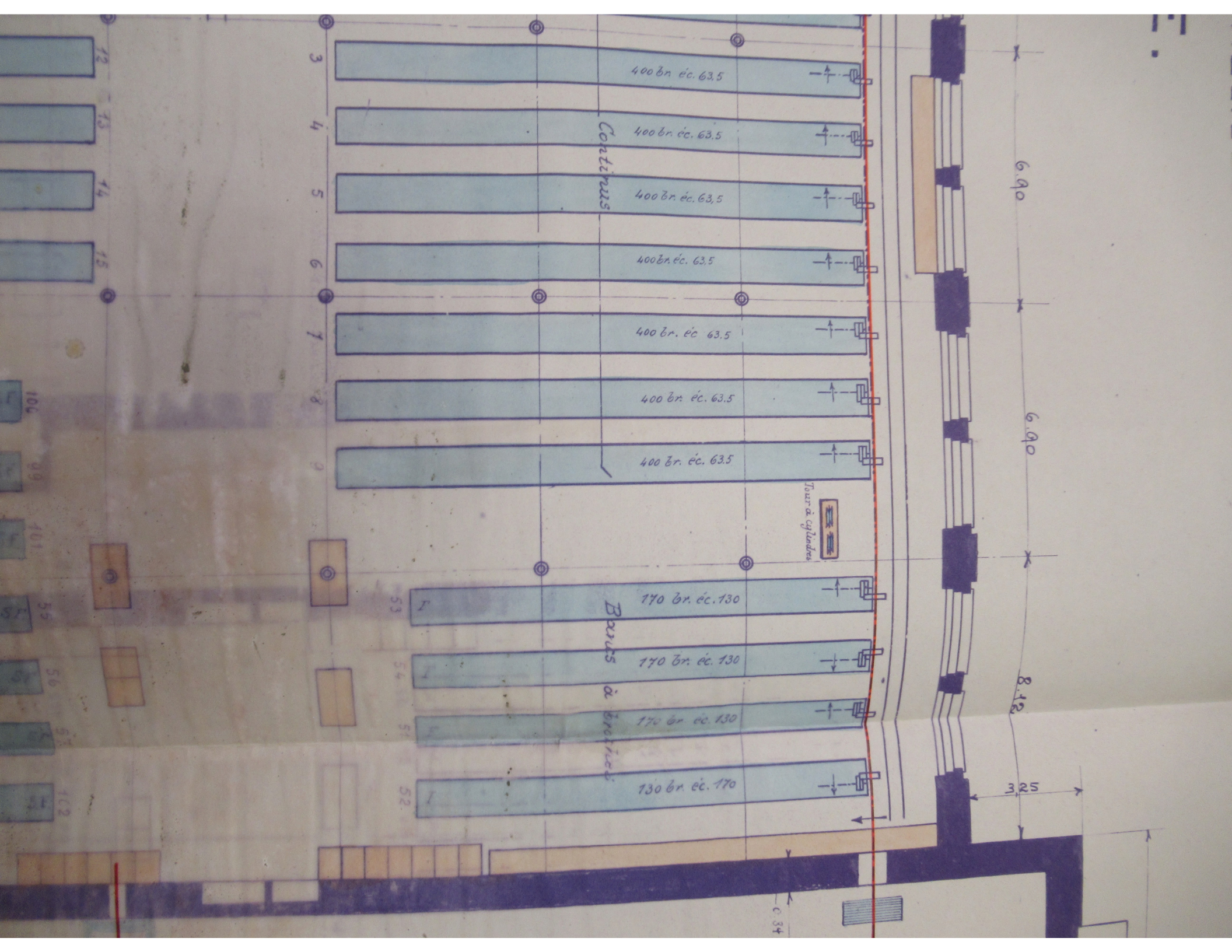
Continues

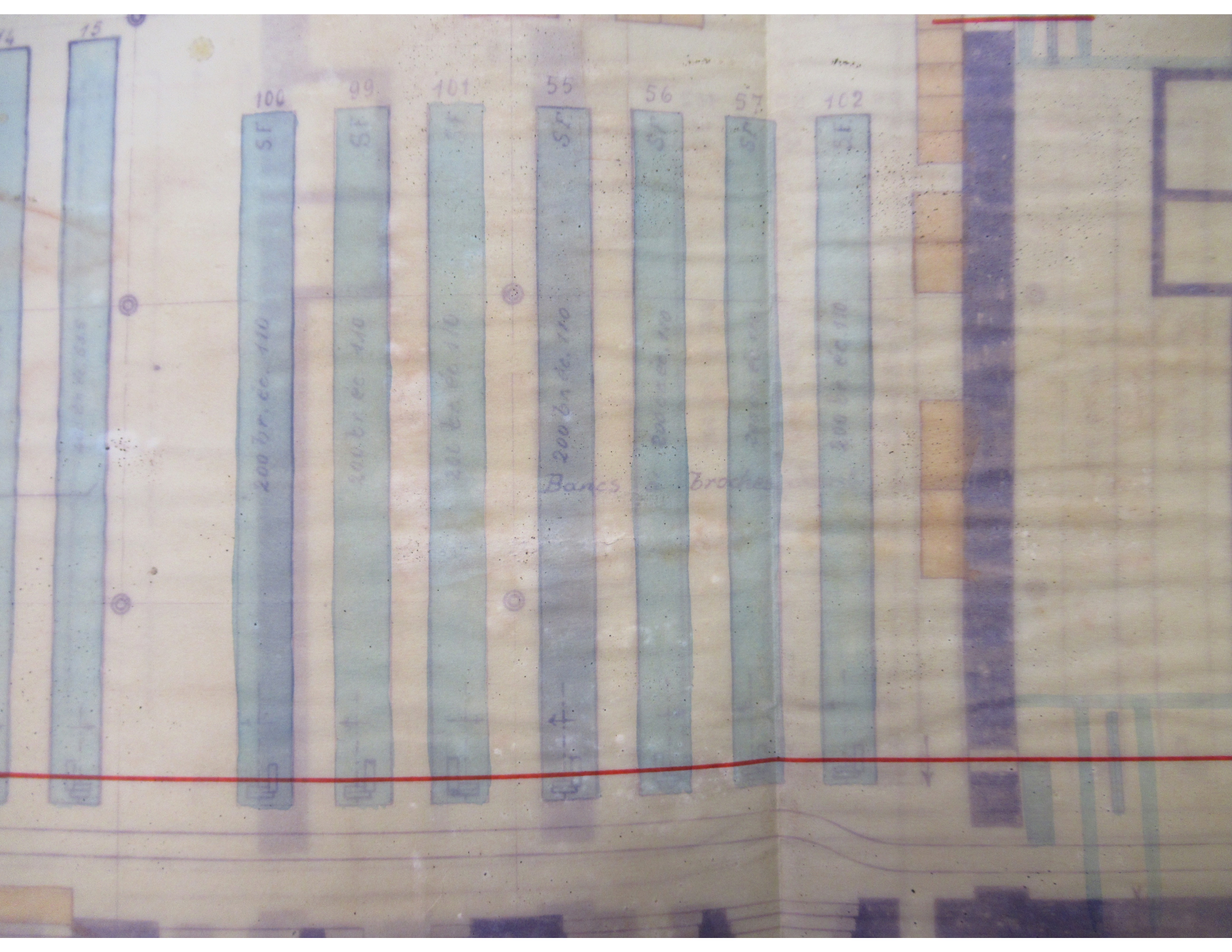
1
2
3
4
5
6

FILATURE.

1^{ER} ETAGE







14

15
200 br. cc. 110
SF

100
200 br. cc. 110
SF

99
200 br. cc. 110
SF

101
200 br. cc. 110
SF

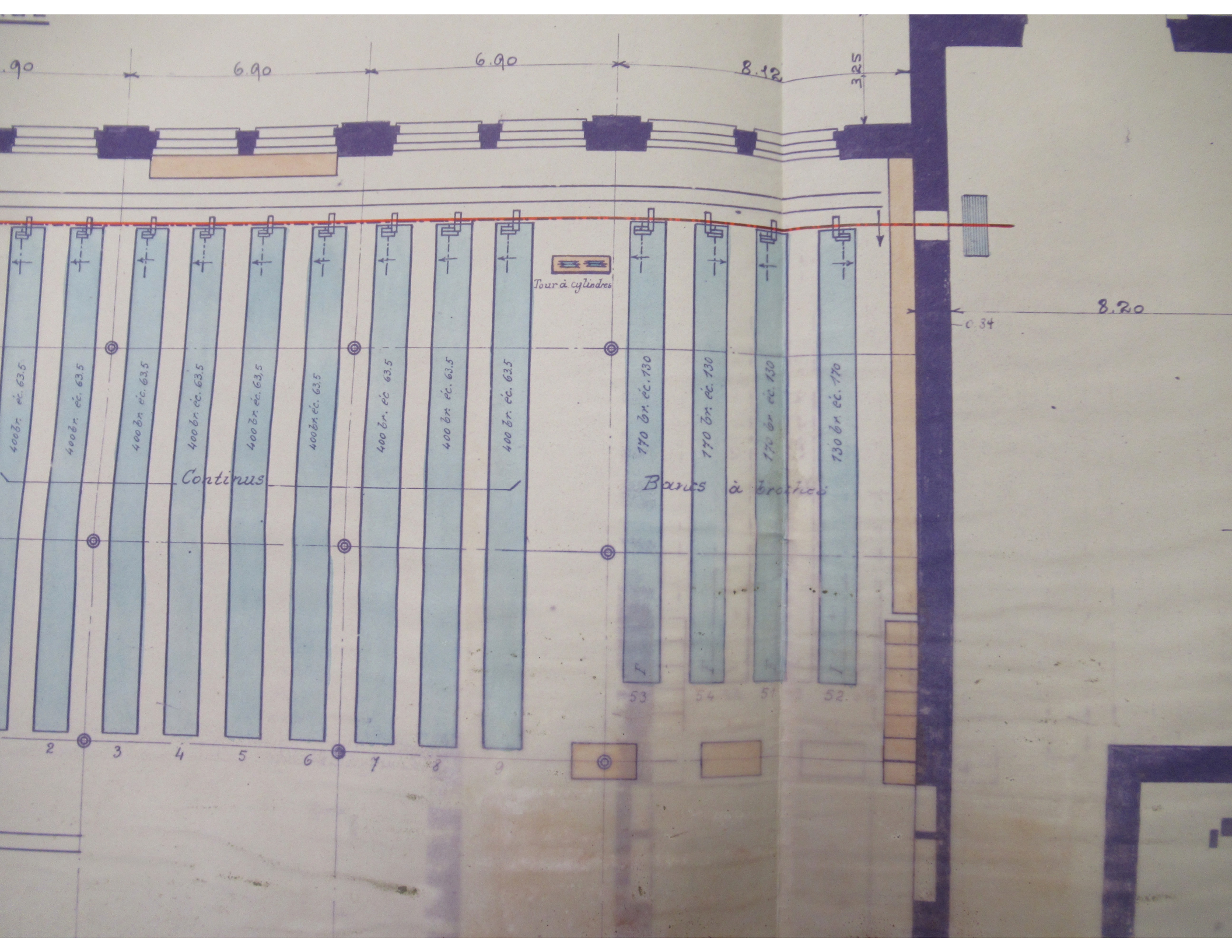
55
200 br. cc. 110
SF

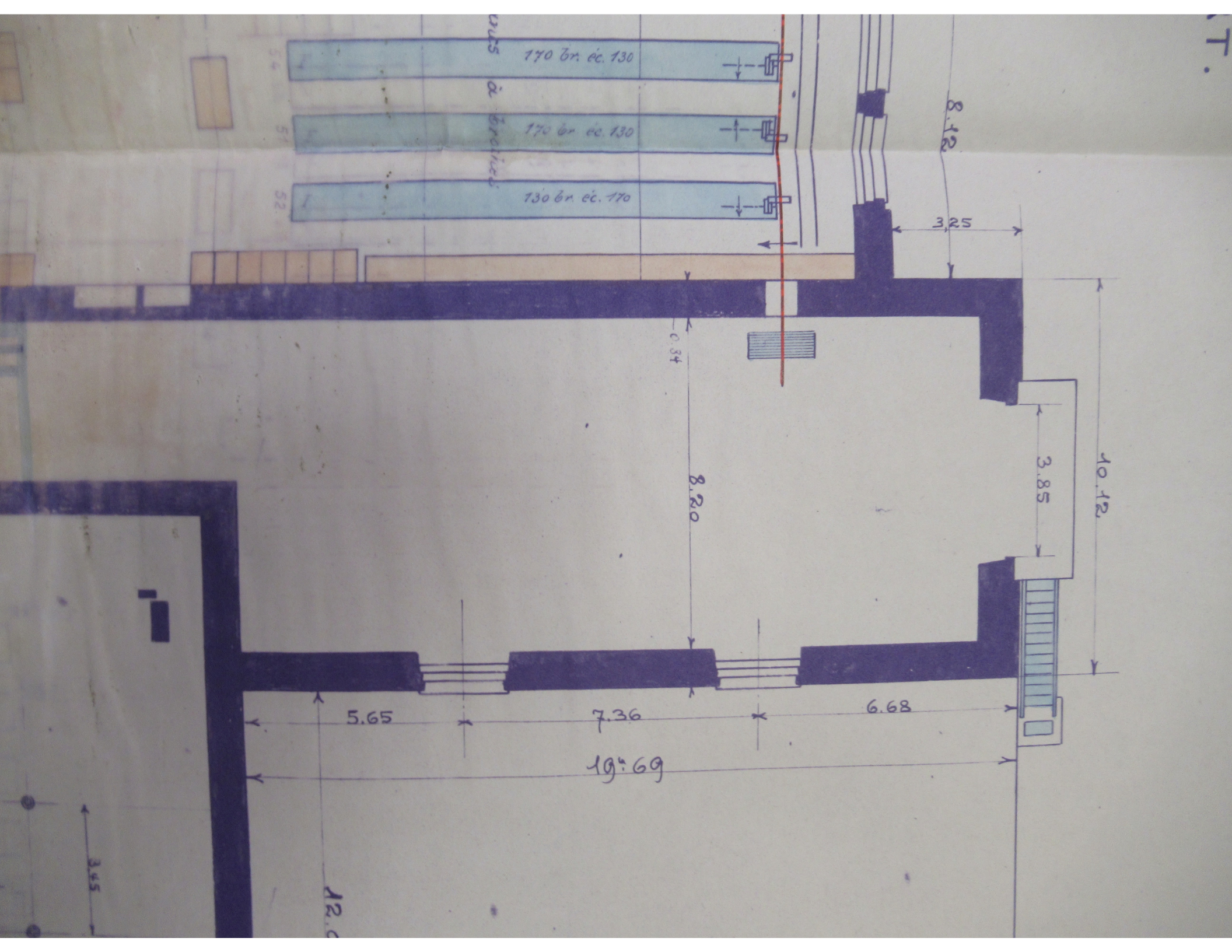
56
200 br. cc. 110
SF

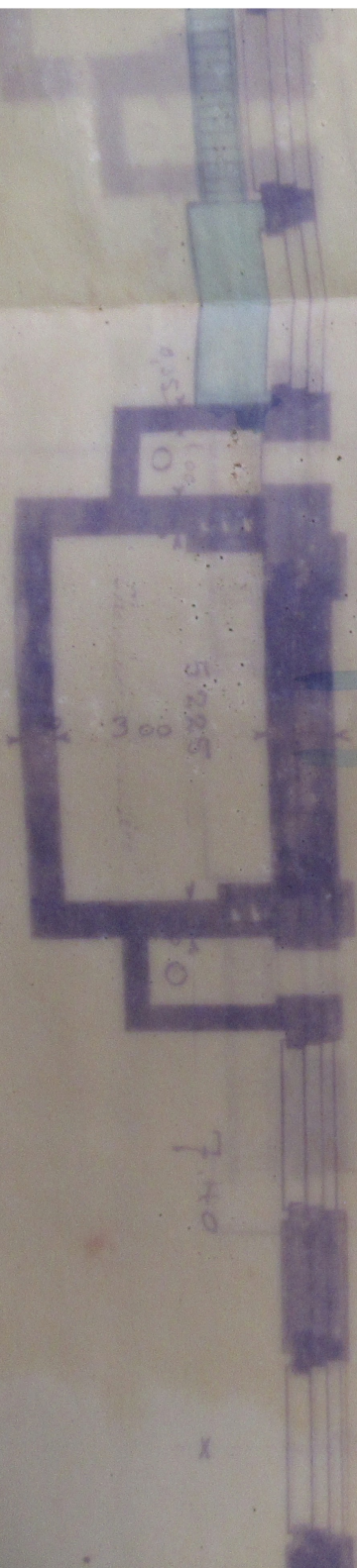
57
200 br. cc. 110
SF

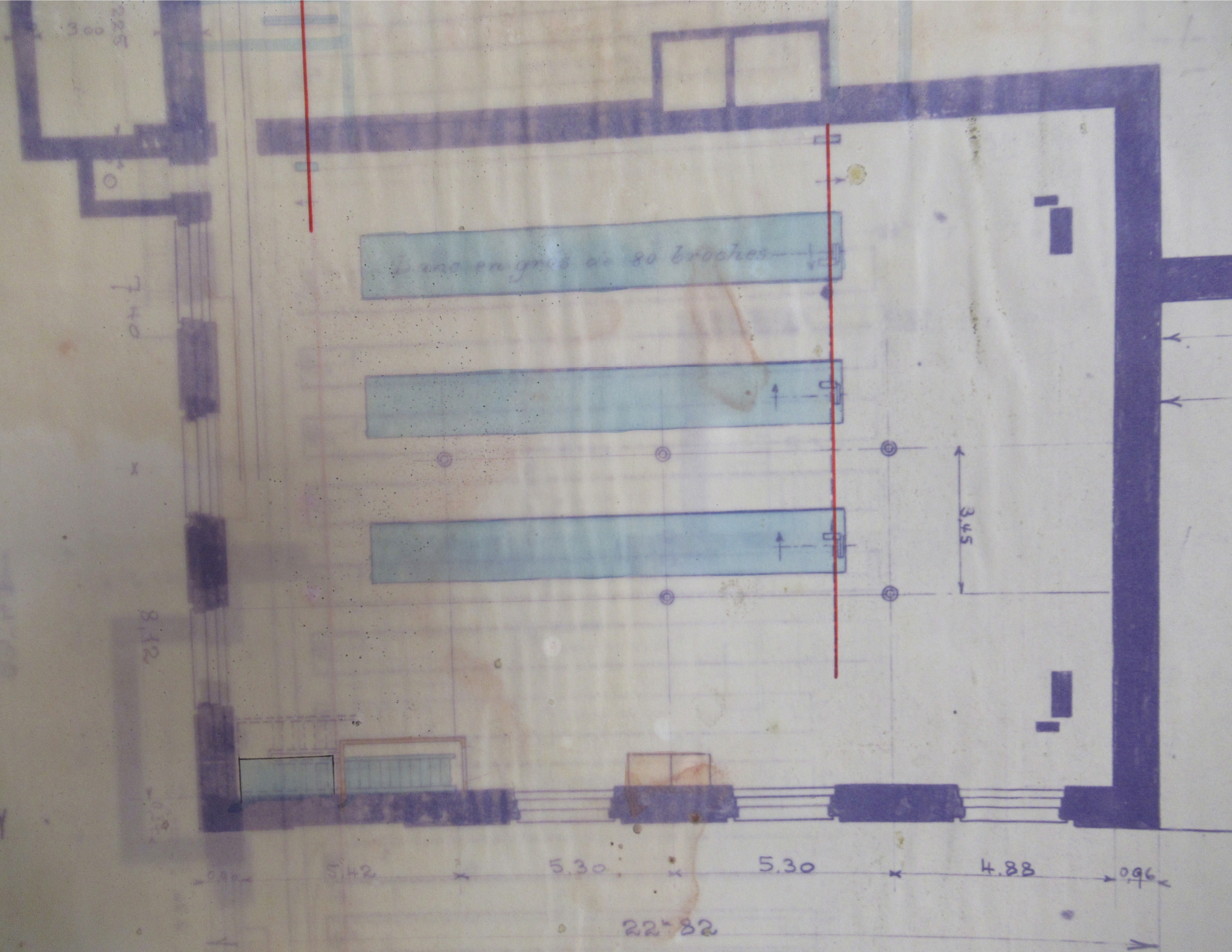
102
200 br. cc. 110
SF

Bancas e Broche









une en gros de 80 broches

7.40

x

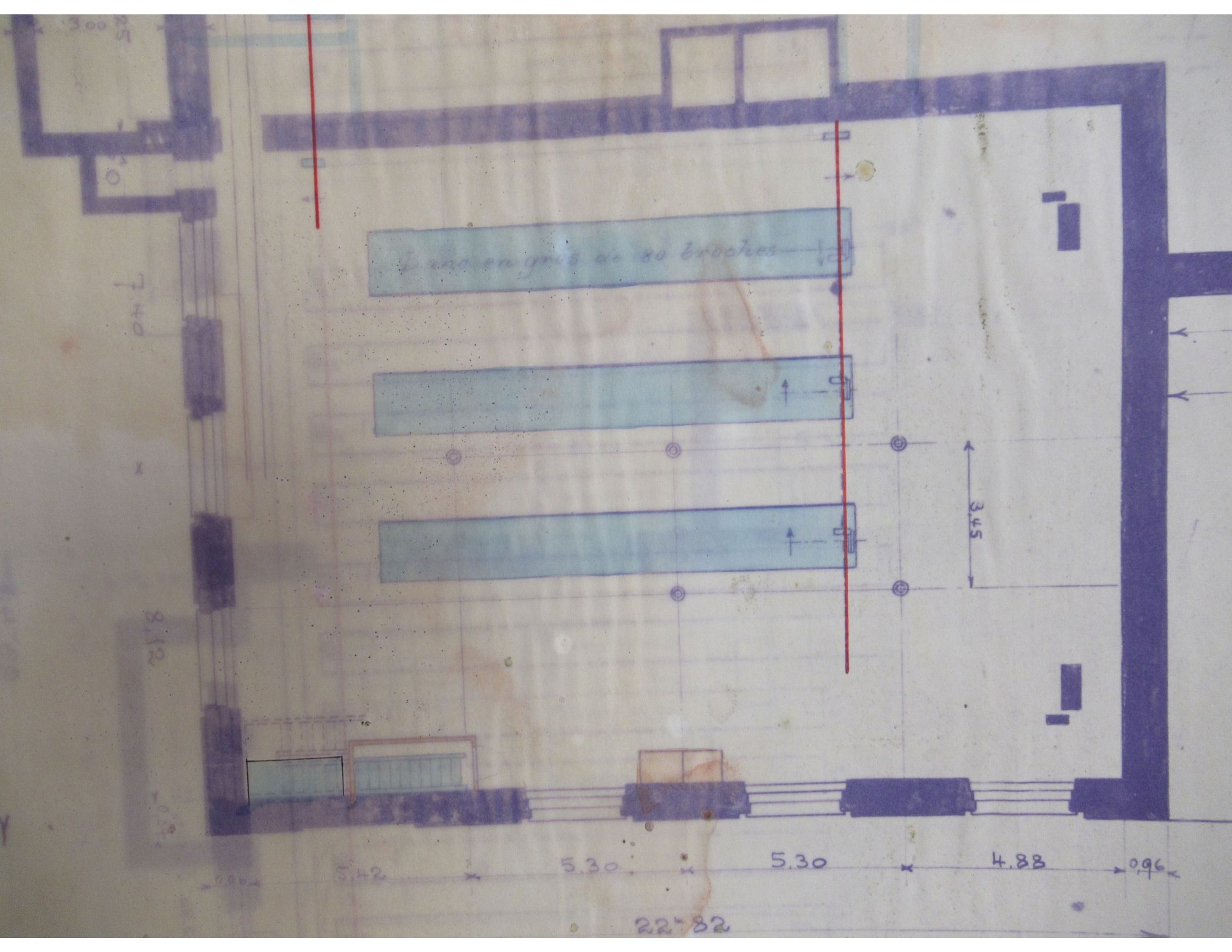
8.12

Y

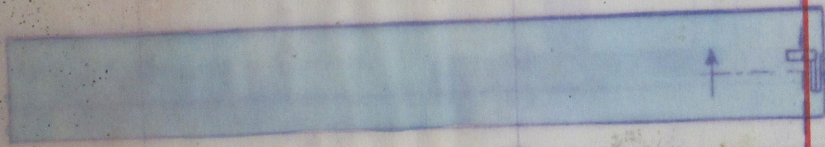
0.96 5.42 5.30 5.30 4.88 0.96

22.82

3.45



Banco en gros de 80 broches



3.45

0.96 5.42 5.30 5.30 4.88 0.96

22-82

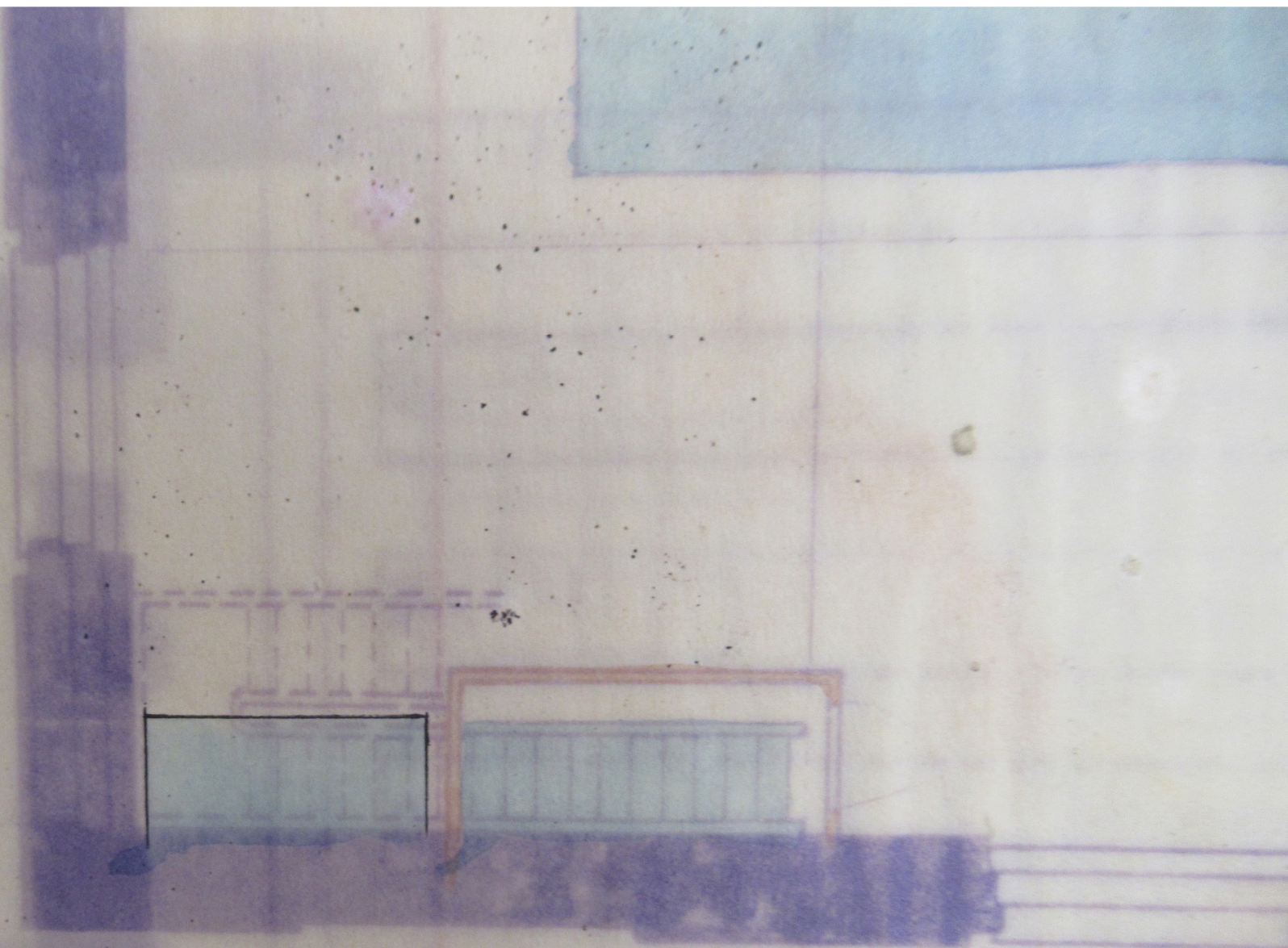
8.12

0.84

0.86

5.42

5.30



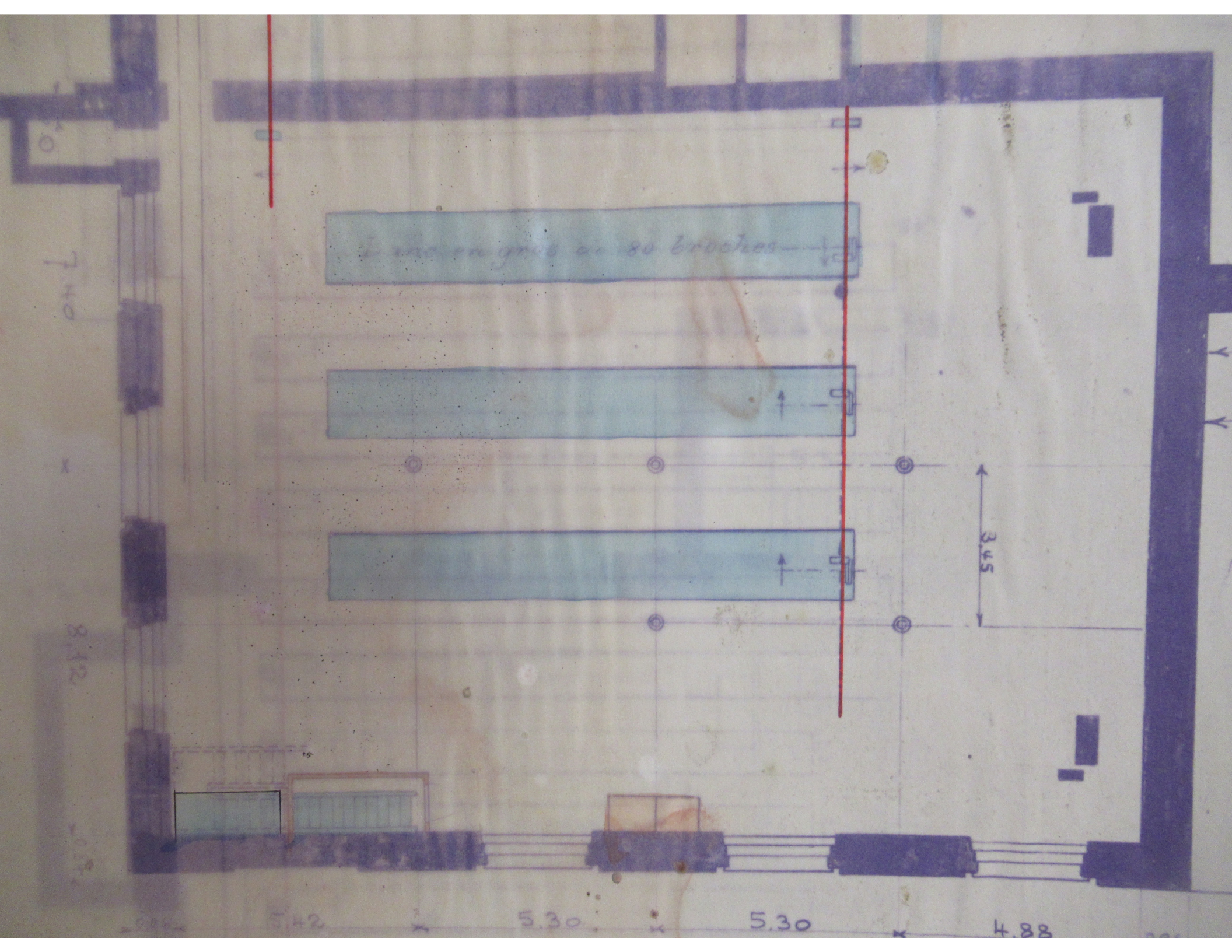


Table en bois de 80 broches

7.40

x

8.12

3.45

5.42

5.30

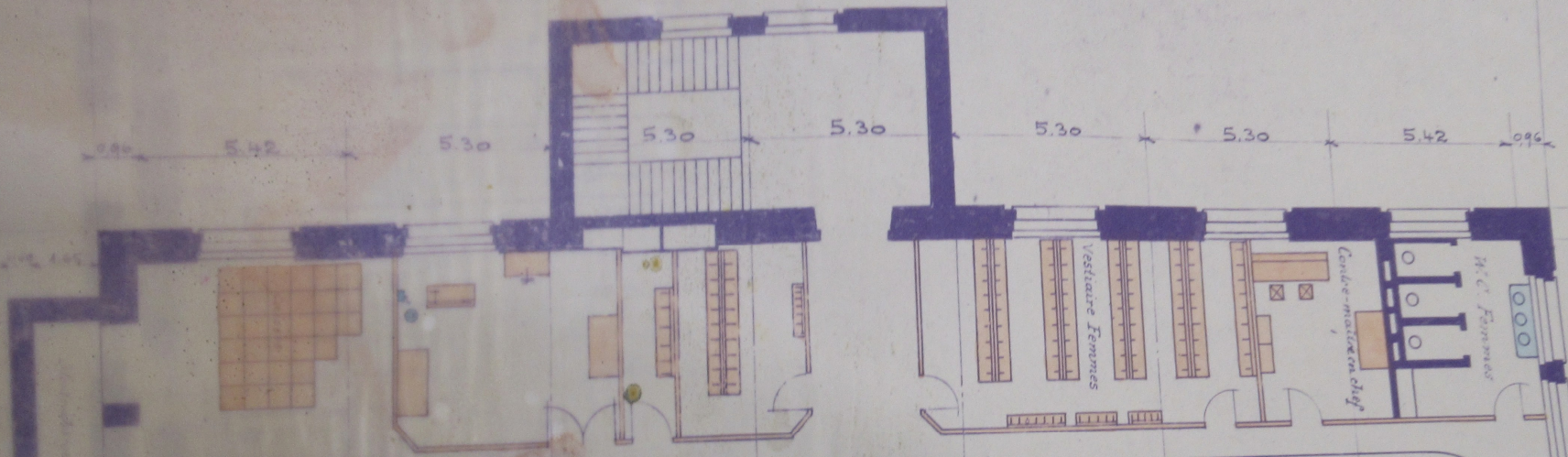
5.30

4.88

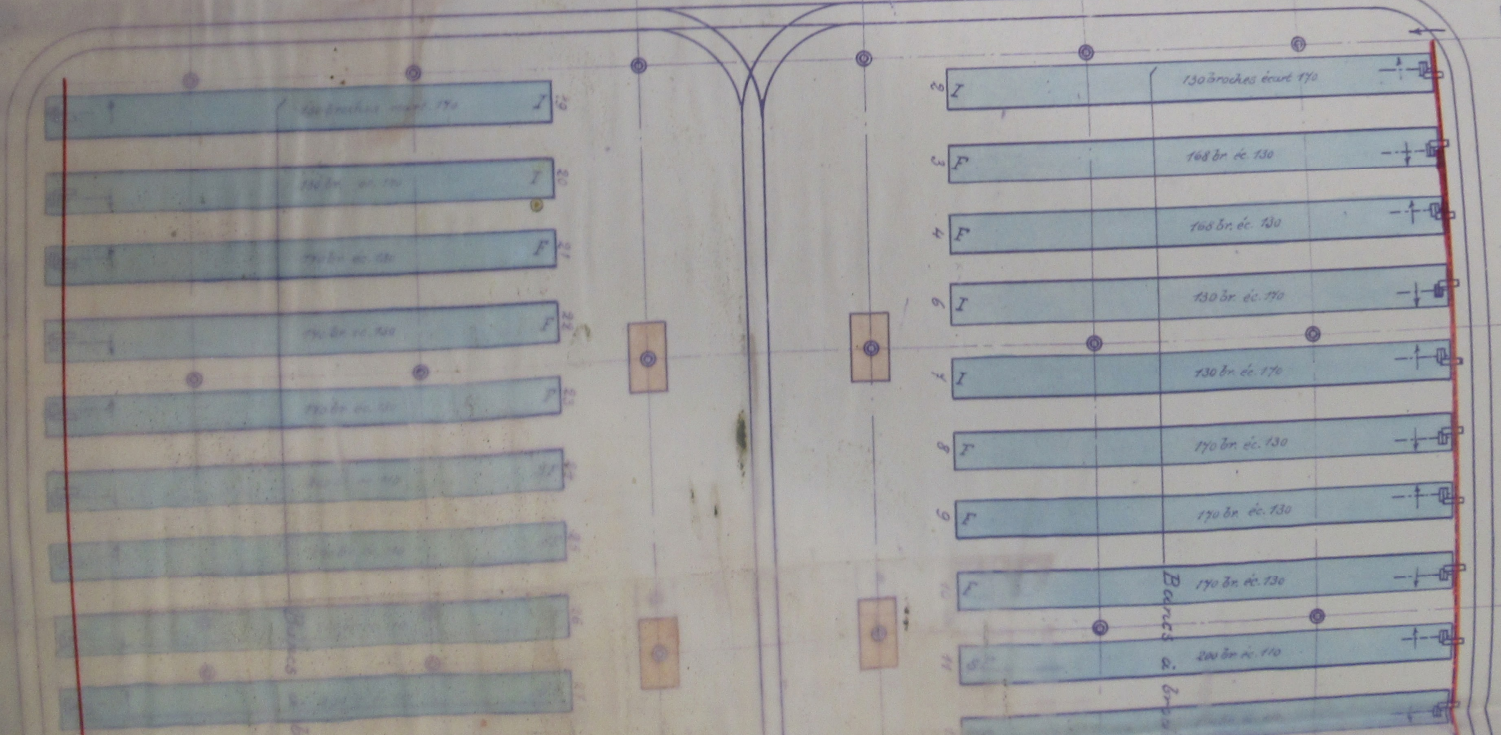
39-26

10.60

0.96 5.42 5.30 5.30 5.30 5.30 5.30 5.42 0.96



Vestiaire Femmes
 Sacristie
 M. C. Femmes



130 broches écarts 170
 148 br. éc. 130
 140 br. éc. 130
 130 br. éc. 170
 130 br. éc. 170
 170 br. éc. 130
 170 br. éc. 130
 170 br. éc. 130
 200 br. éc. 170
 200 br. éc. 170

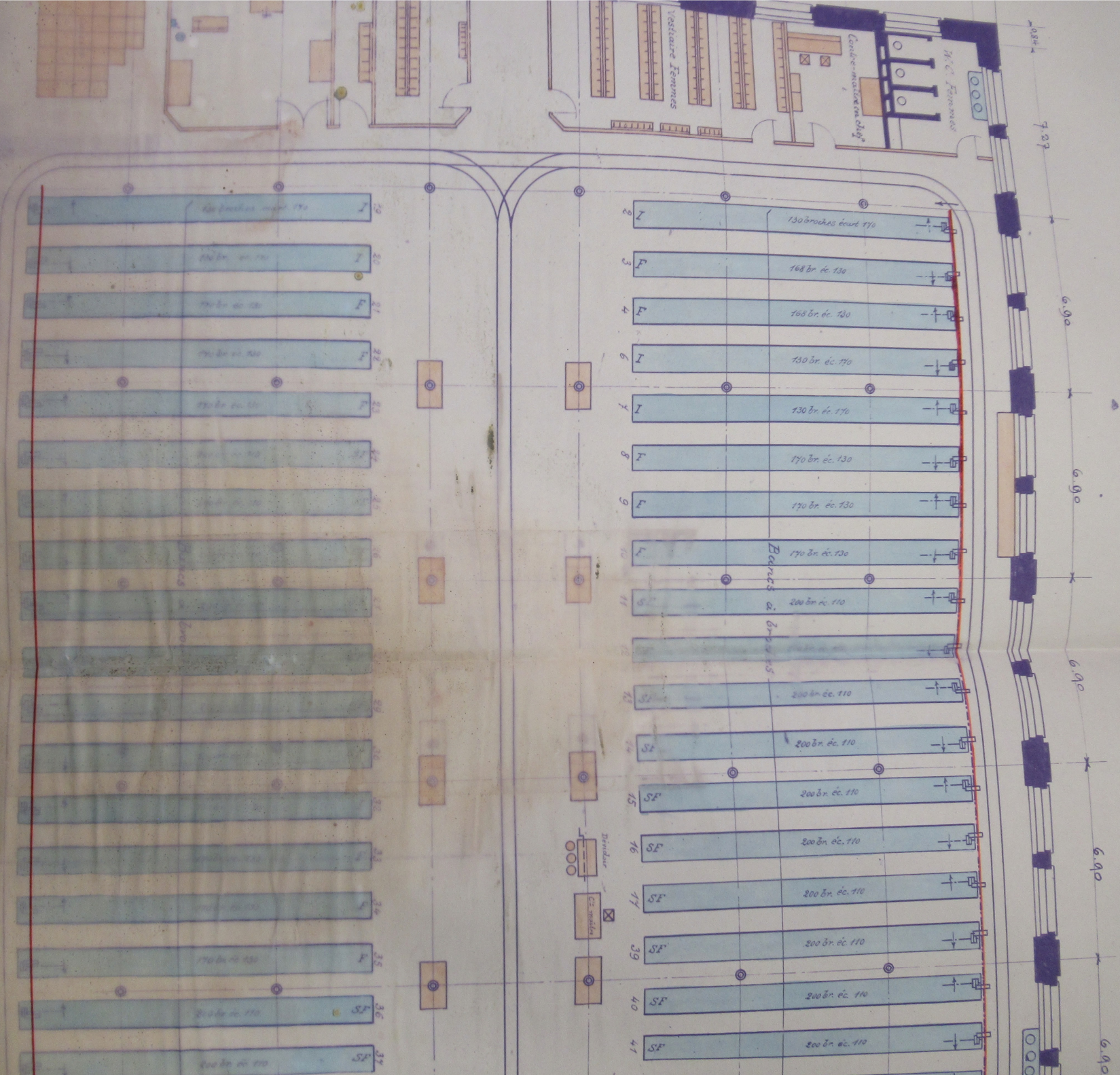
130 broches écarts 170
 148 br. éc. 130
 140 br. éc. 130
 130 br. éc. 170
 130 br. éc. 170
 170 br. éc. 130
 170 br. éc. 130
 170 br. éc. 130
 200 br. éc. 170
 200 br. éc. 170

7.27

6.90

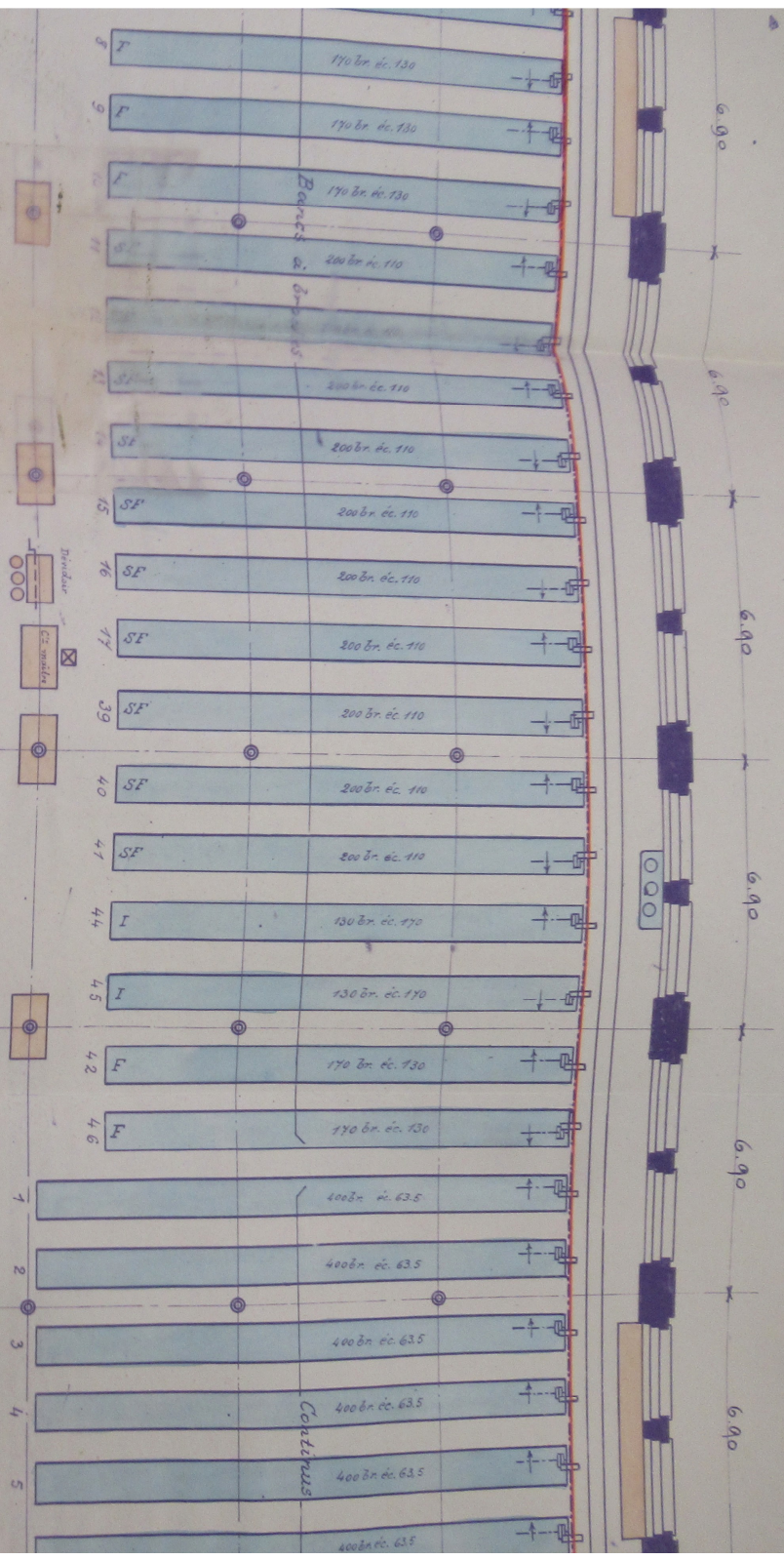
6.90

6.90



FILATURE.

1ER ETAGE



93-49

1ER ETAGE

