

DMC-270-285

D.M.C

PLANS D'ENSEMBLE DES ATELIERS

Année 1933

MULHOUSE	Filature à rez-de-chaussée Filature I Bâtiment à étages Filature II Filature II Mélange, battage et magasin de coton
BELFORT	Filature

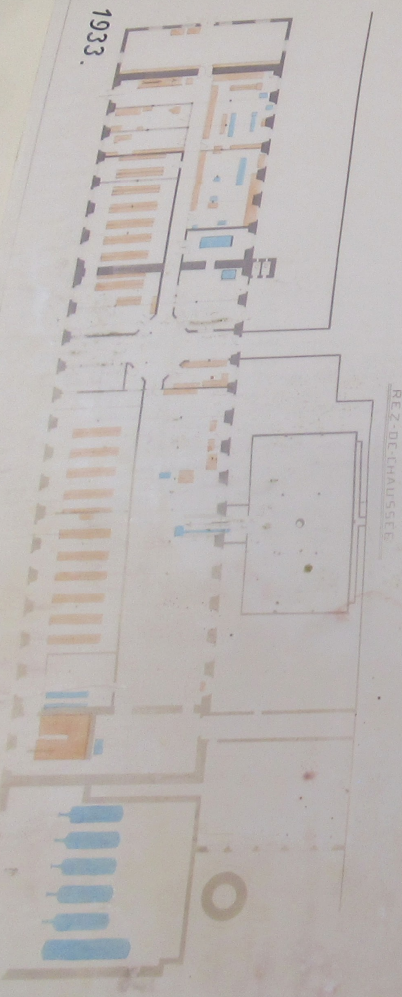
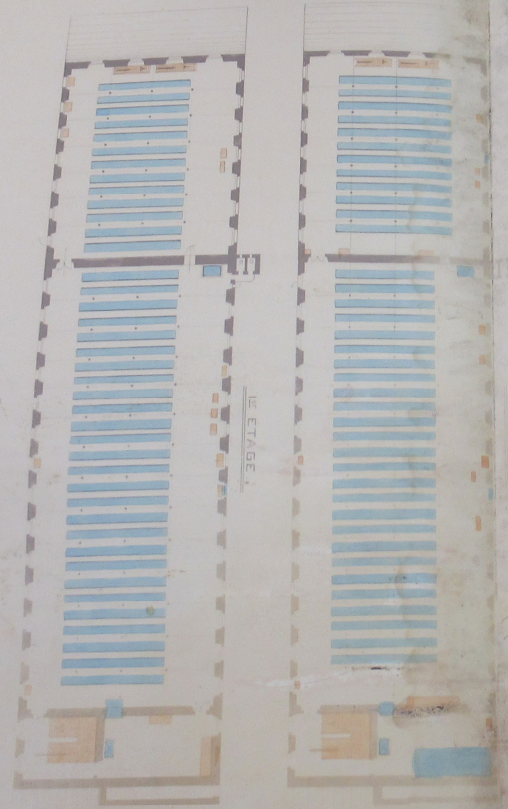
Portefeuille N° 23

n° d'ordre	n° du plan	Désignation
1	-	Silature I. Bâtiment à étages.
2	18095	idem. Bâtiment à rez-de-chaussée.
3	-	Silature II. Ensemble.
4	19260	idem. Battage et Mélange.
5	18837	Silature Belfort. Ensemble.
6	17520	idem. Sous-sol.
7	17435	idem. Rez-de-chaussée.
8	17509	idem. 1 ^{er} étage.
9	17510	idem. 2 ^{me} étage.
10	17518	idem. 3 ^{me} étage.
11	-	idem. Façades principales.
12	17384	idem. Façades latérales.
13	-	Silature I. Agrandissement du bâtiment à rez-de-chaussée. 1903.
14	-	idem. idem.
15	2485	idem. Agrandissement du local des cartes 1910.
16	2502	idem. Agrandissement du local des bancs à broches.
17	5779	Silature Belfort. Installation pour aspirer les poussières pendant le déboufrage combinée avec la ventilation de la salle.

12 DMC 270

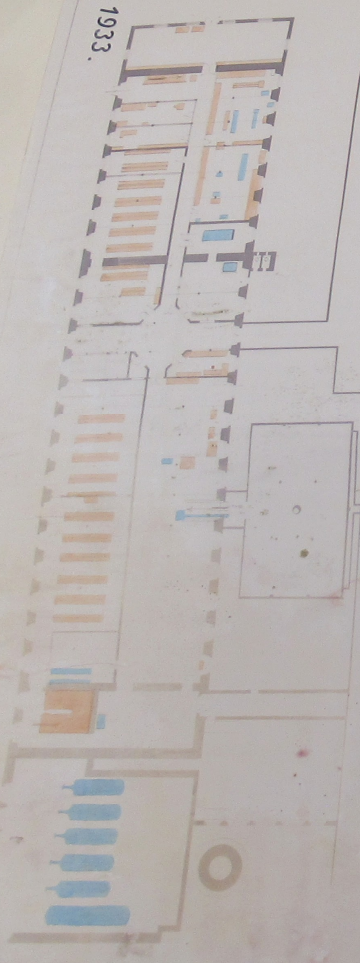
1093 DOLLUS - MILLS & C^o

FILATURE I

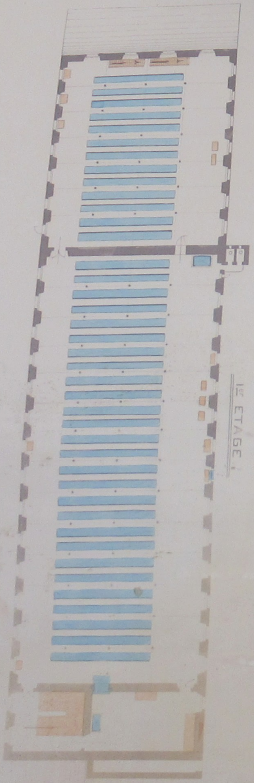


1933.

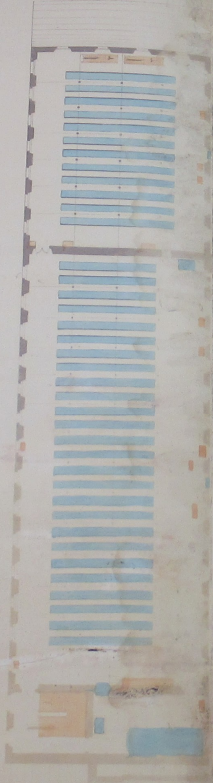
1933.



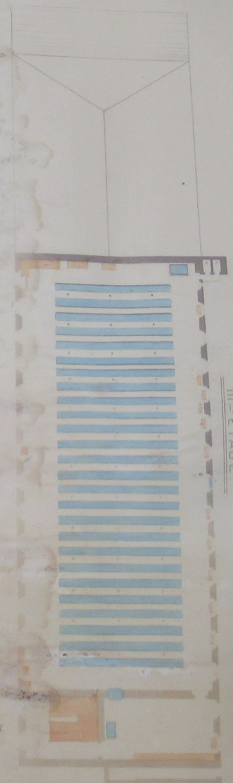
REZ-DE-CHAUSSEE



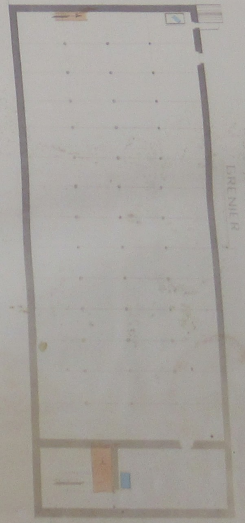
I^{er} ETAGE



II^{em} ETAGE

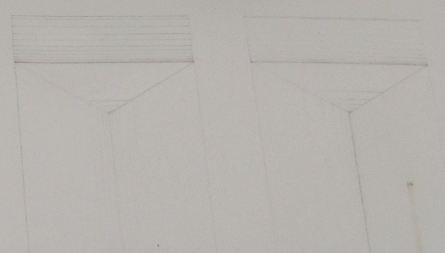


III^{em} ETAGE

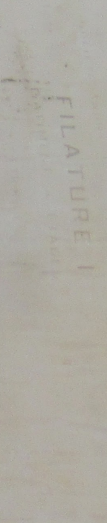


1933 DOLLUS-MIEG & C

FILATURE I

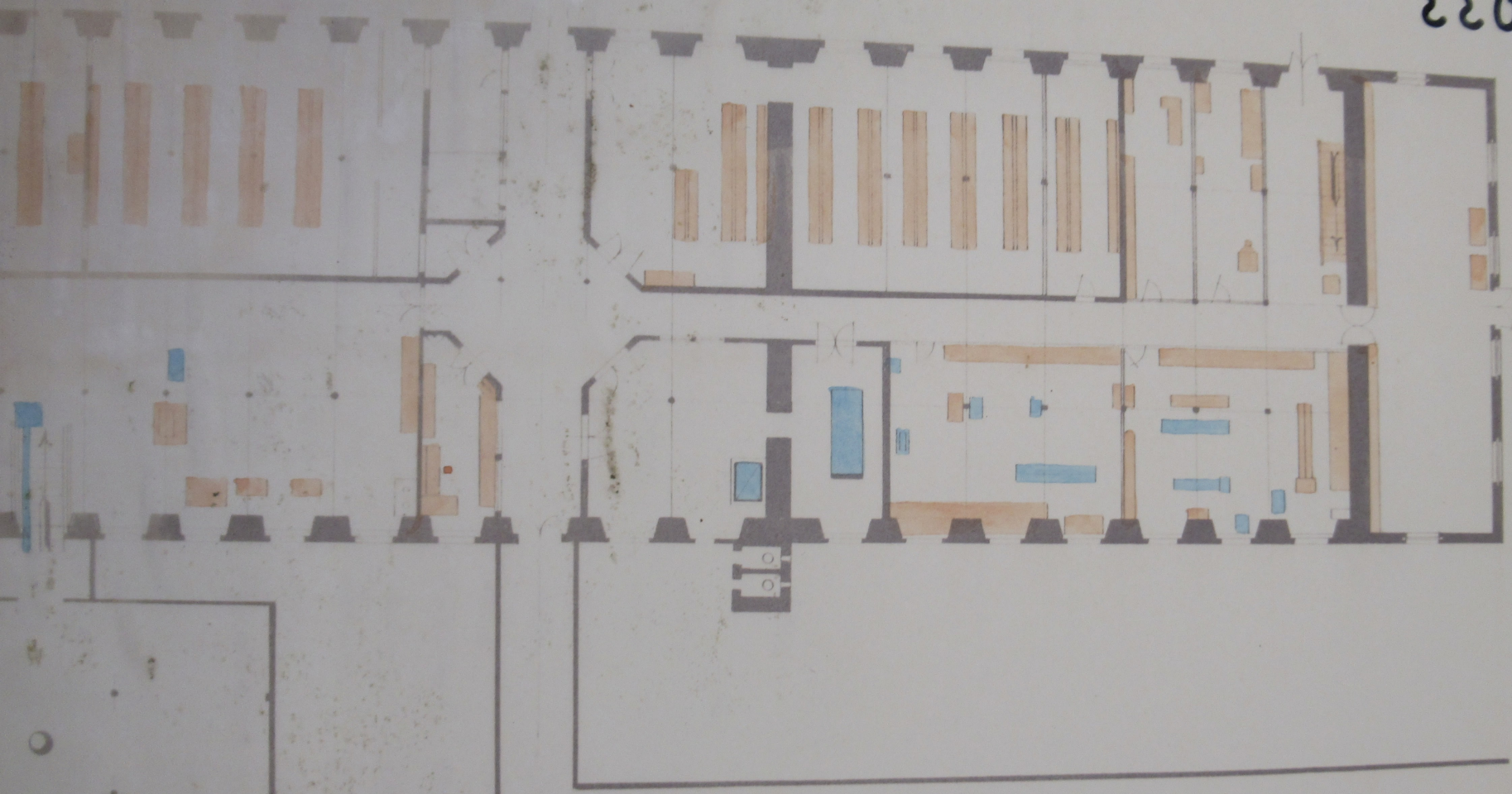


V^{em} ETAGE



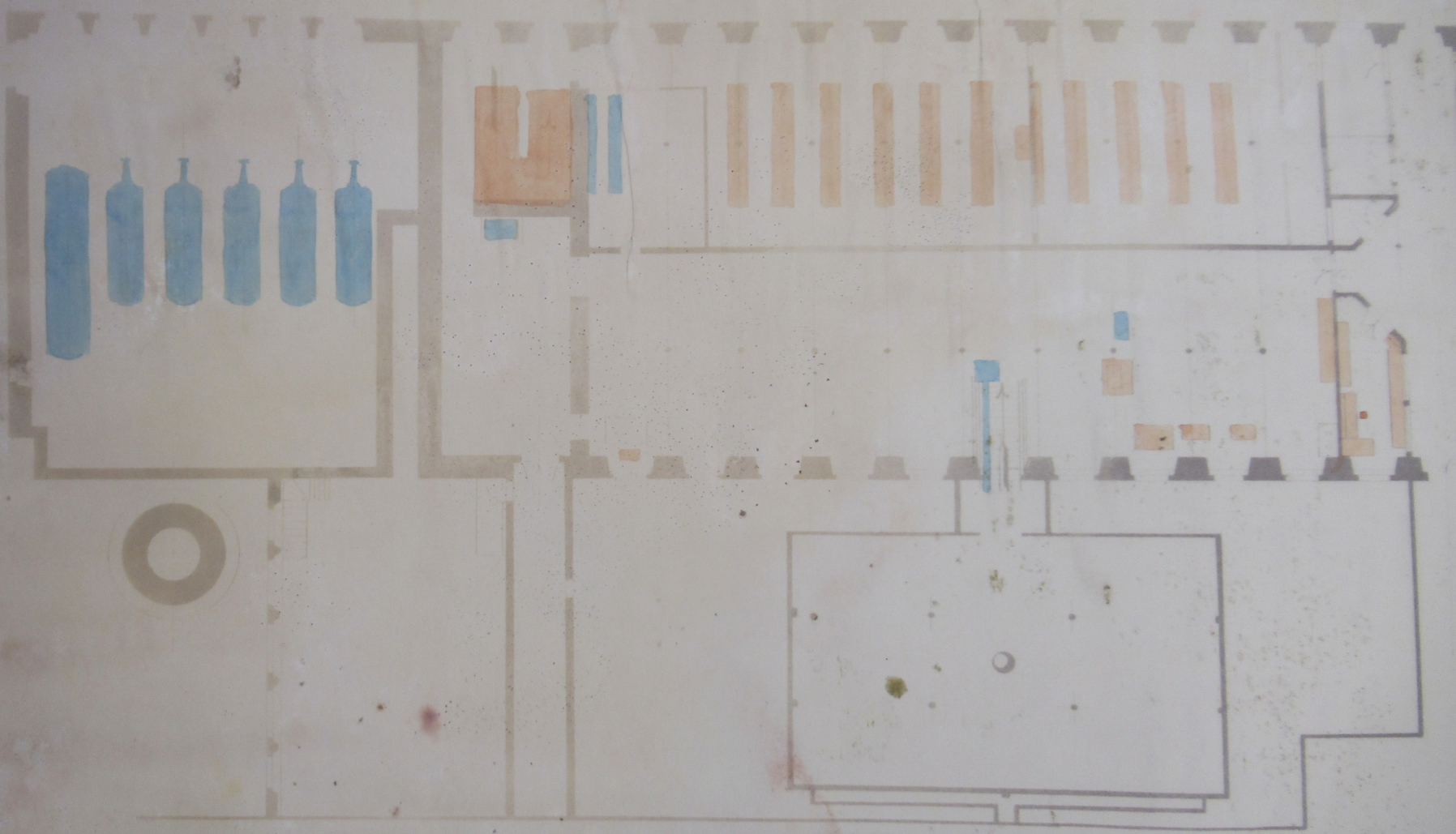
VI^{em} ETAGE

1933.



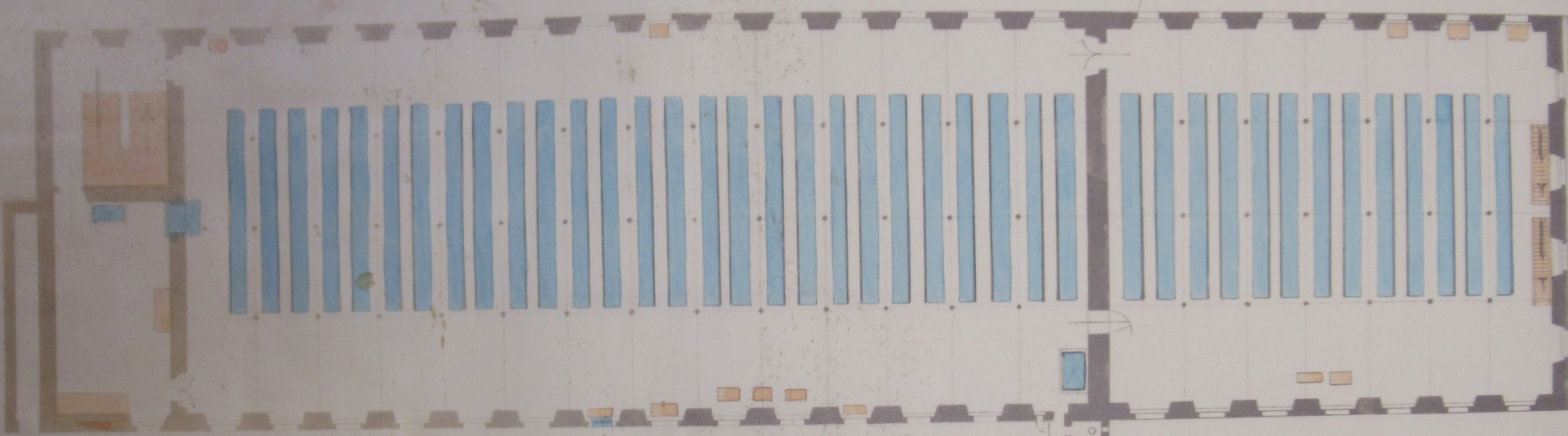
REZ-DE-CHAUSSEE

002 1000

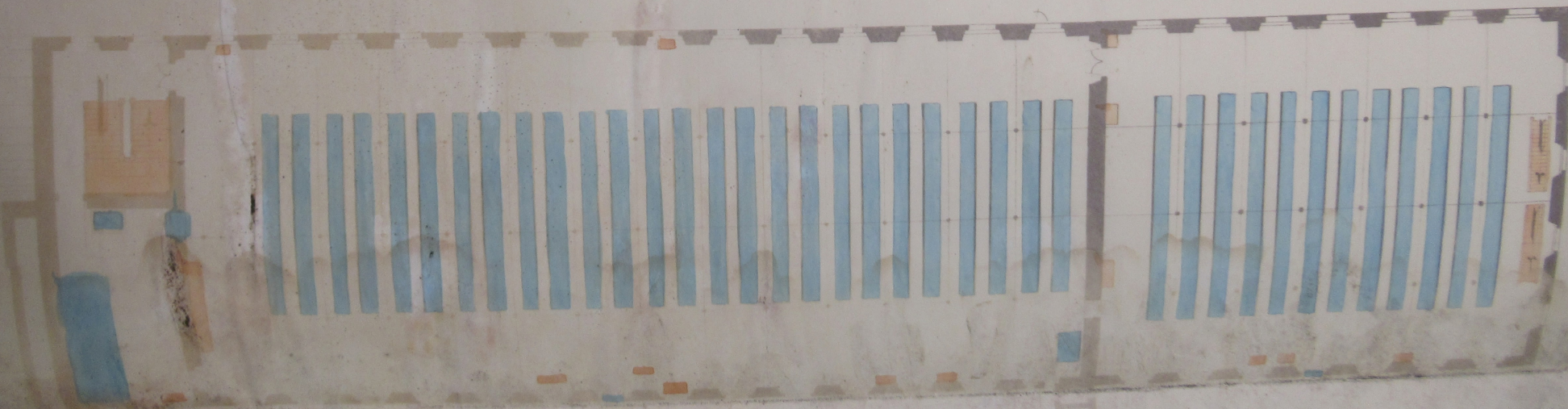


REZ-DE-CHAUSSEE

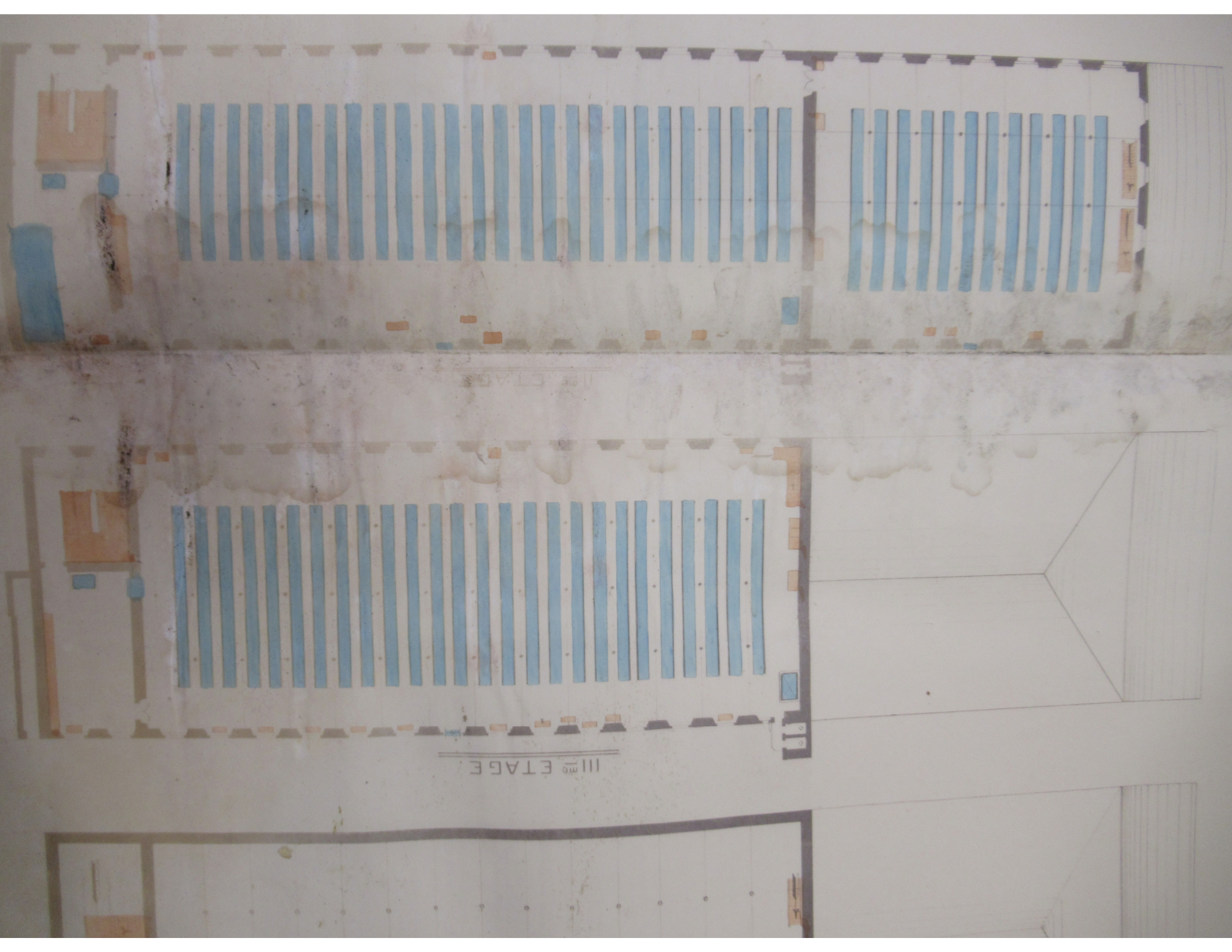
REZ-DE-CHAUSSEE



1^{er} ETAGE

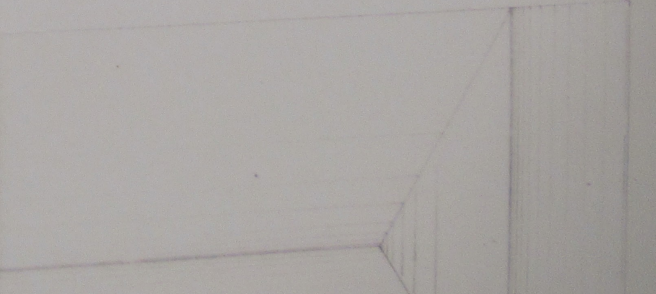
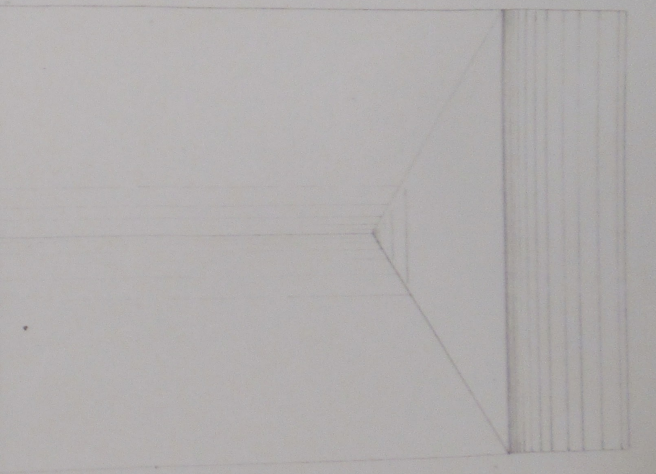
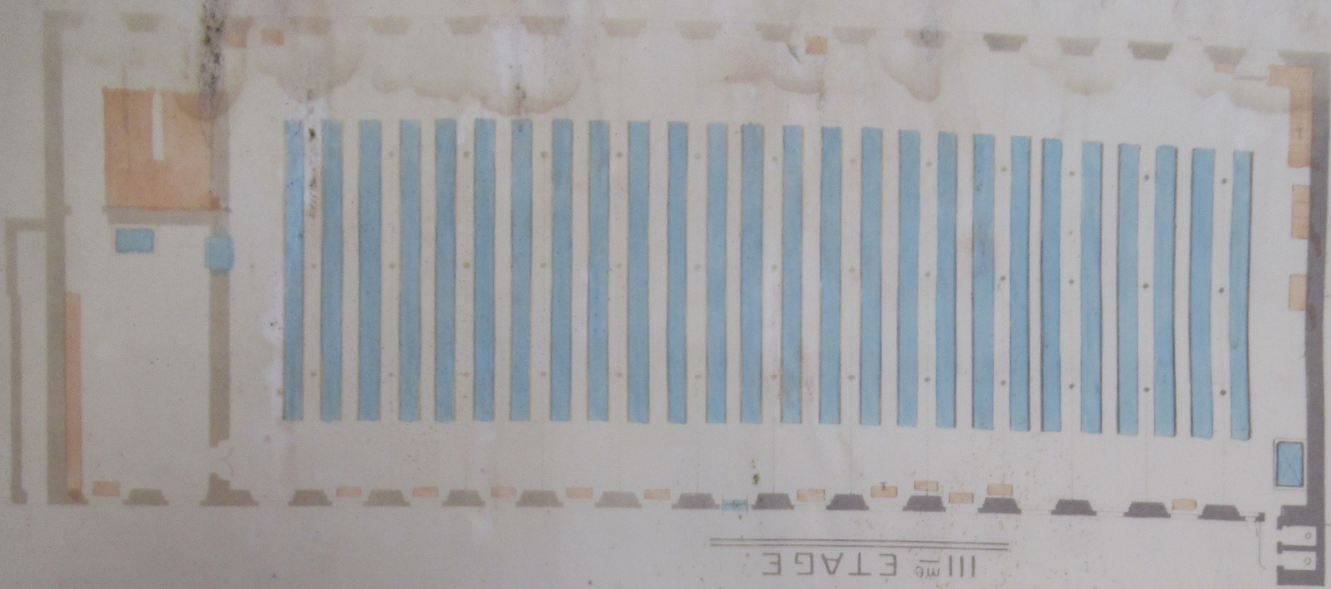


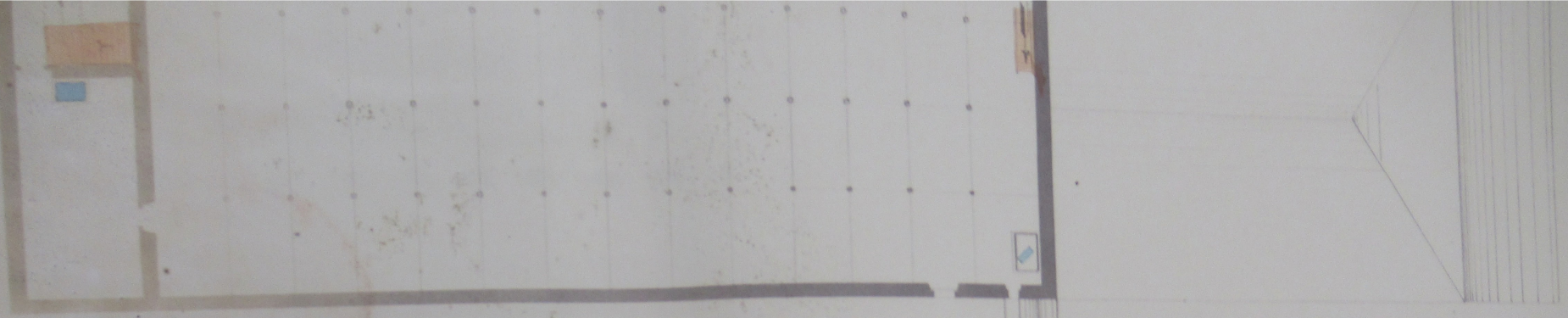
1^{er} ETAGE



II^{me} ETAGE

III^{me} ETAGE





BRENIER



FILATURE I
BATHING & EMBLE

1073. DOLLFUS-MIEG & Co. GÖTTINGEN