

12 DTC 382-392

D.M.C

Teinturerie II

Magasin de drogues . Ravivage . Assouplissage . Chevillage .

Verification - triage . Ventilation .

N° d'ordre	Date d'exécution	Désignation	Numéros des plans.
1	Fév. 1930	Hangar pour drogues	24 295
2	Sept. 1928	Magasin de drogues - Vue en plan -	22970
3	Oct. 1928	" " " Coupe	22971a
4	Jan. 1930	Avivage des nœuds.	24229
5	Dec. 1929	Installation de l'assouplissage	24126
6	Avril 1930	Machine à assouplir	24303
7	Jan. 1930	Assouplissage. Alimentation en eau de purge	24189
8	Déc. 1929	Préparation des bains pour machi. à assouplir	24110
9	Oct. 1929	Installation du chevillage	23979
10	Oct. 1929	Ventilation du chevillage	24.003
11	Oct. 1929	Ventilation du sous-sol de La Teint. II	23962
12	Nov. 1929	Installation de la vérification & du triage	24009

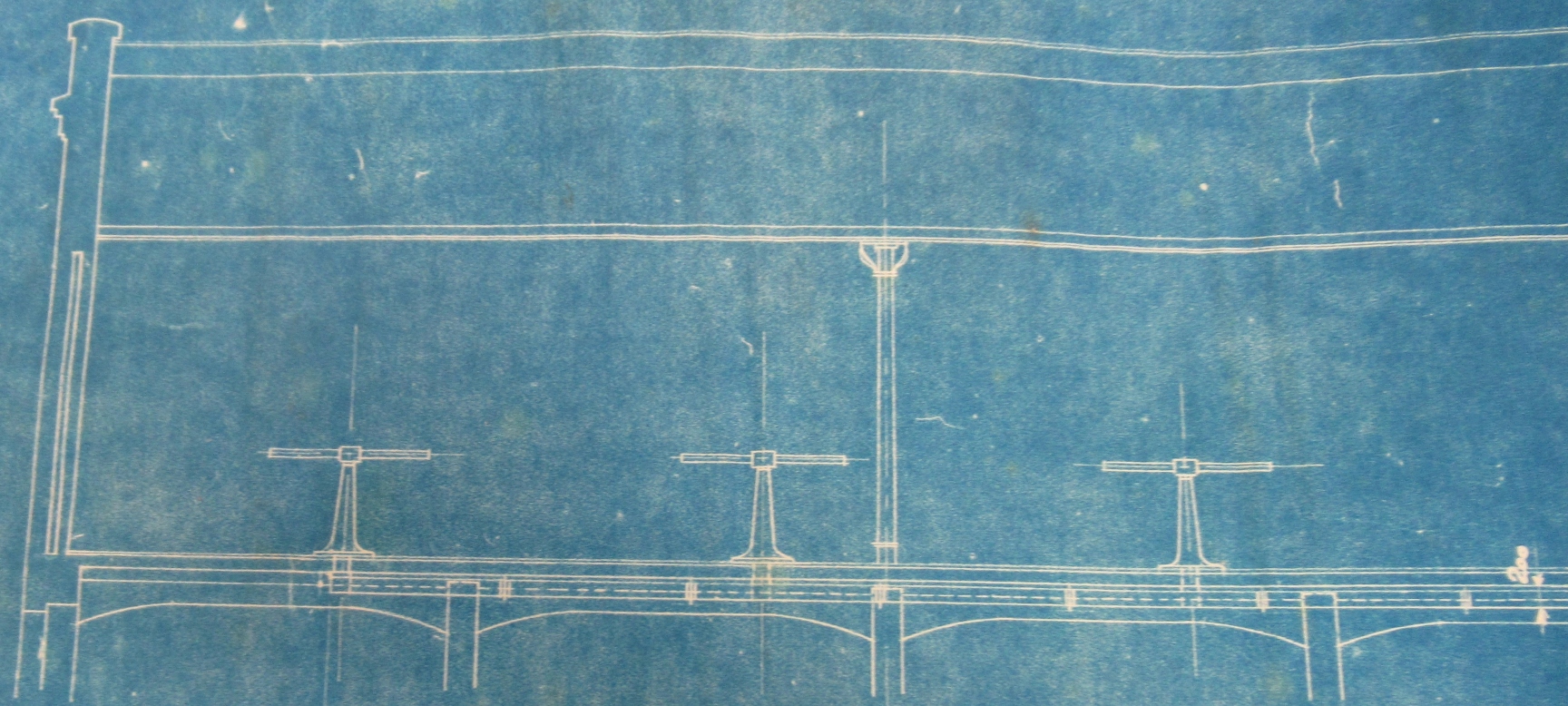
~~cat 11 11~~
Echelle = 115

12 DMC 391

393⁰



DOLLFUS-MIGÉ
 Tenteurs et
 Ventilation de
 Chevaux.
 Mechelle 150, 1/6

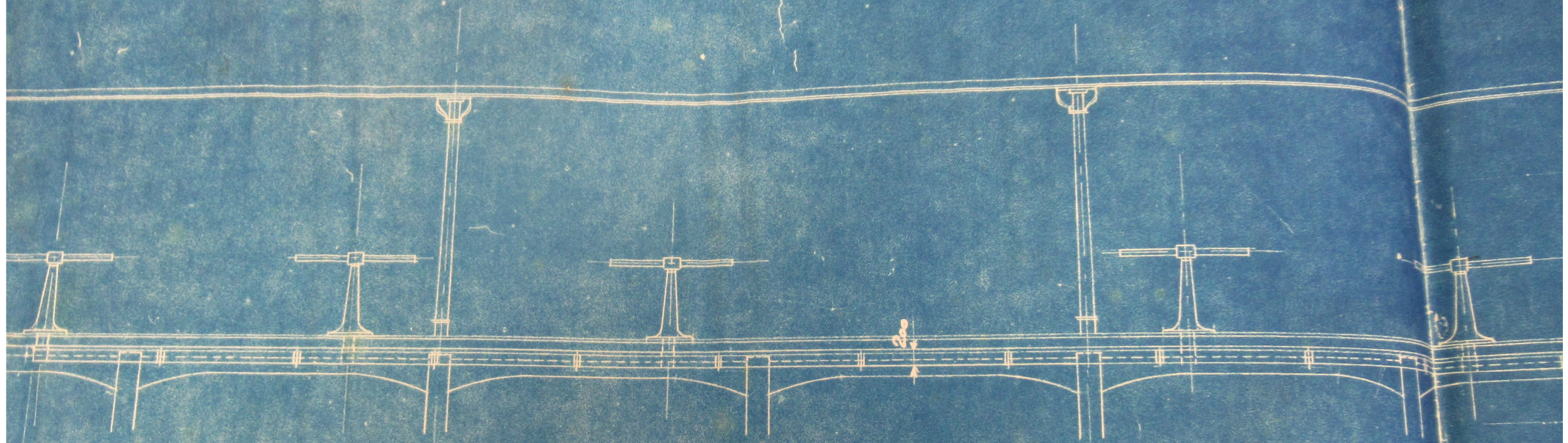


23.500

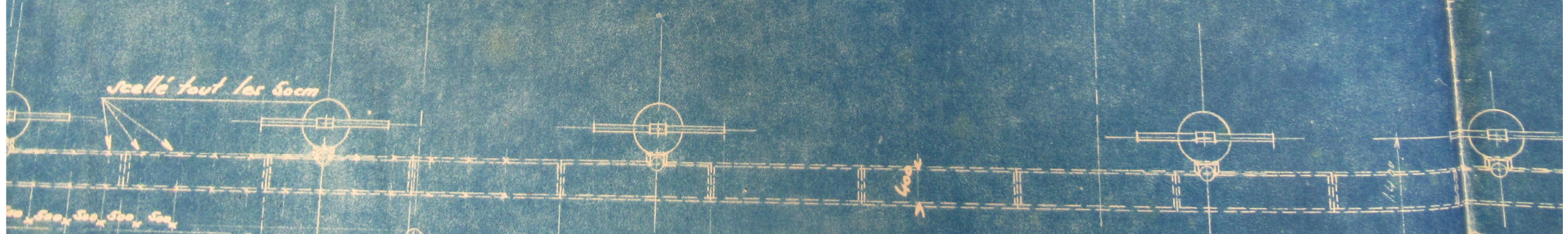
scellé tout les Socm



2.000 2.000 2.000 2.000 2.000



23.500



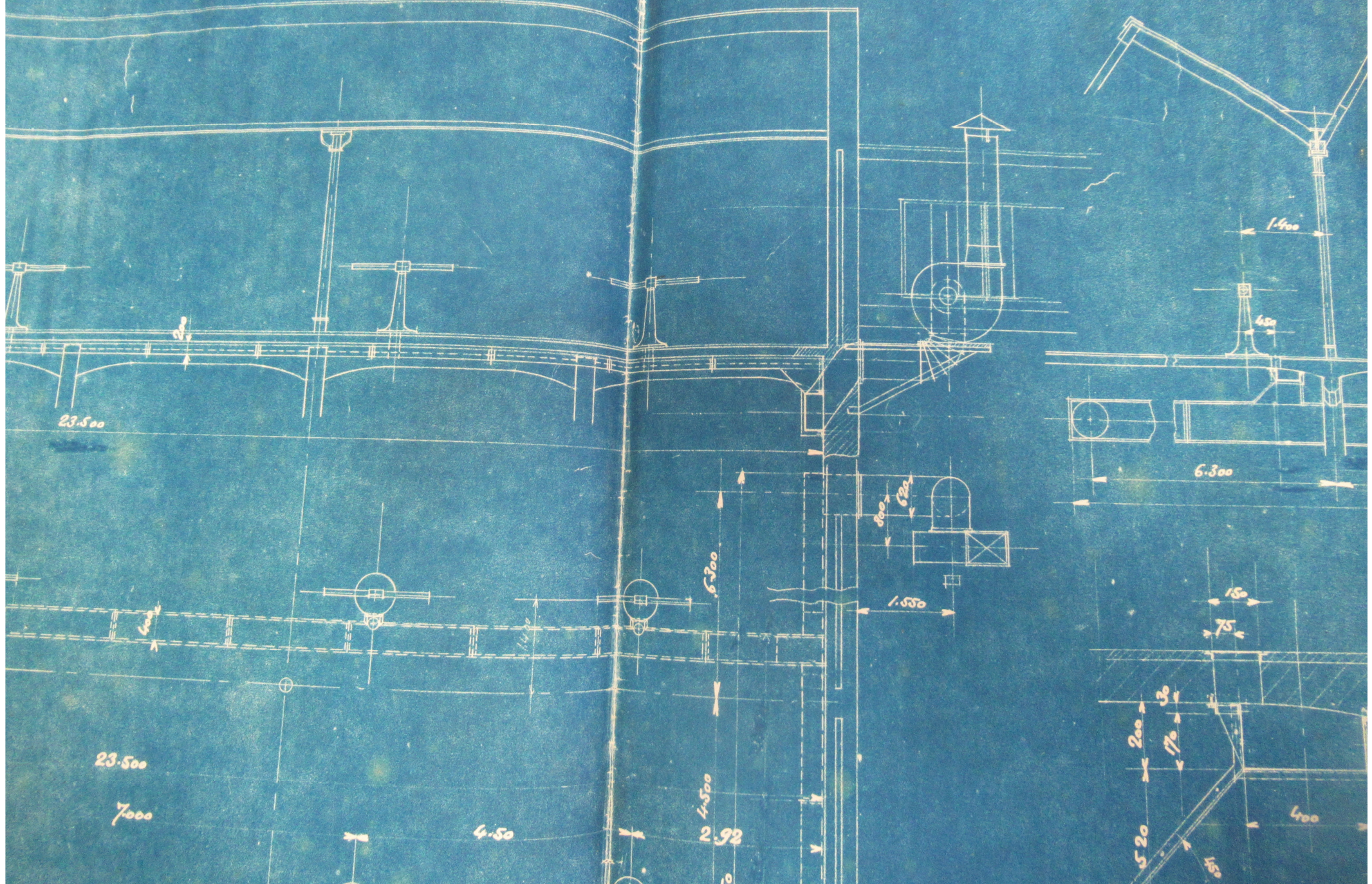
scelle tout les Soem

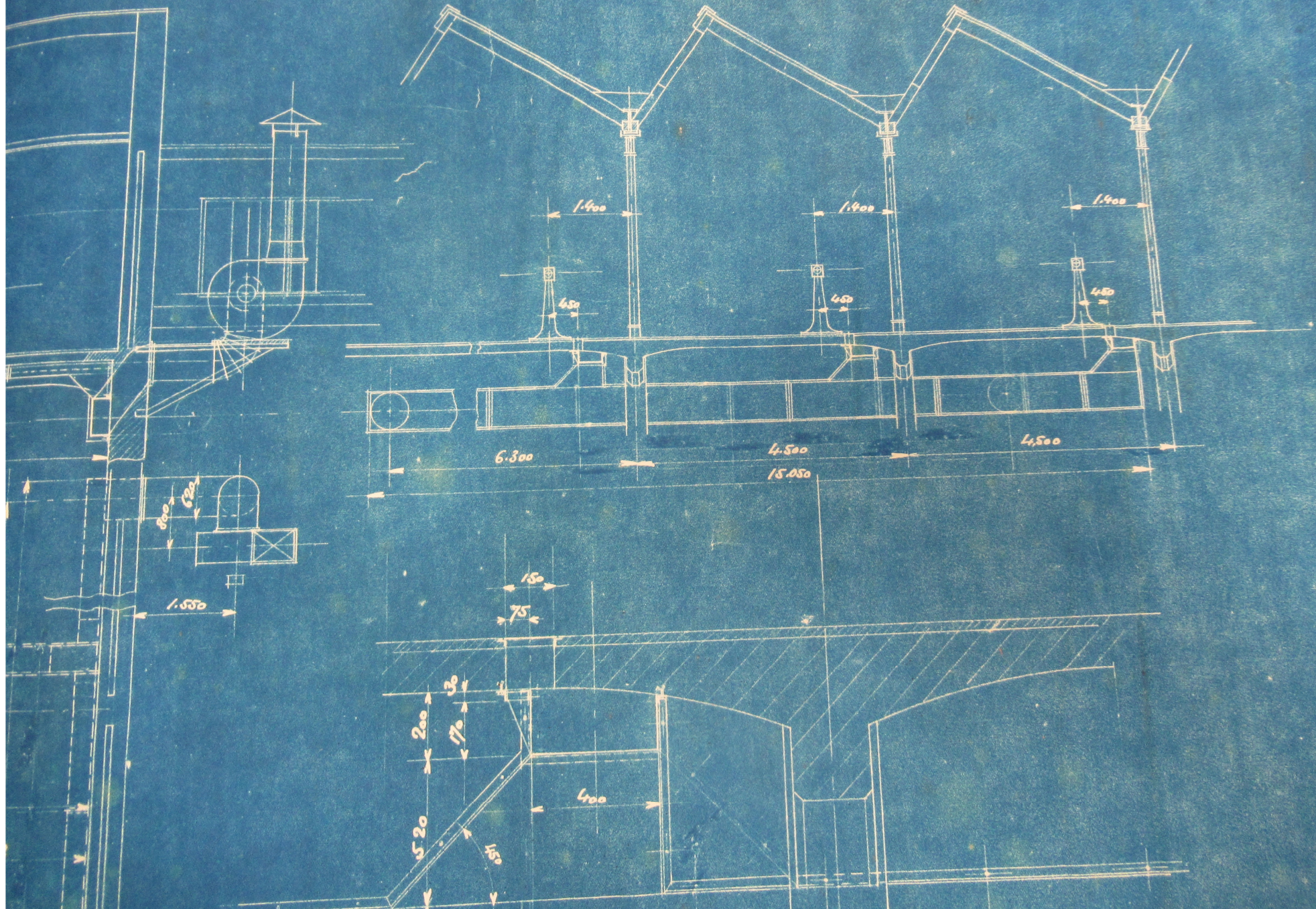
2.000 <-> 2.000 <-> 2.000 <-> 2.000 <-> 2.000

23.500

4.50

4.50





échelle tout les 5cm



joint fait les 5cm



2.000 2.000 2.000 2.000 2.000

23.500

4.50

4.50

7.000

4.50

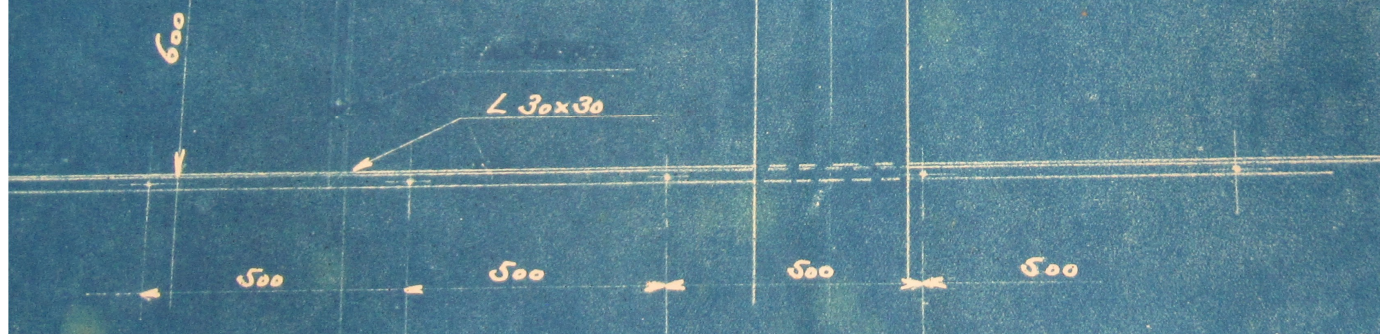
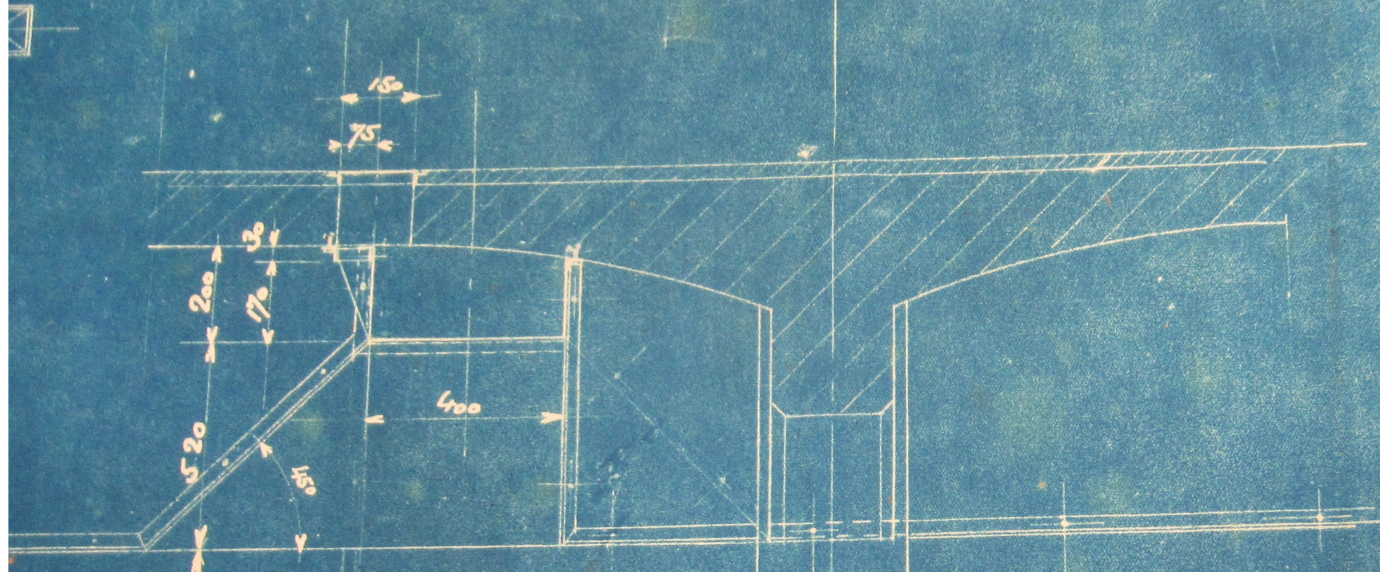
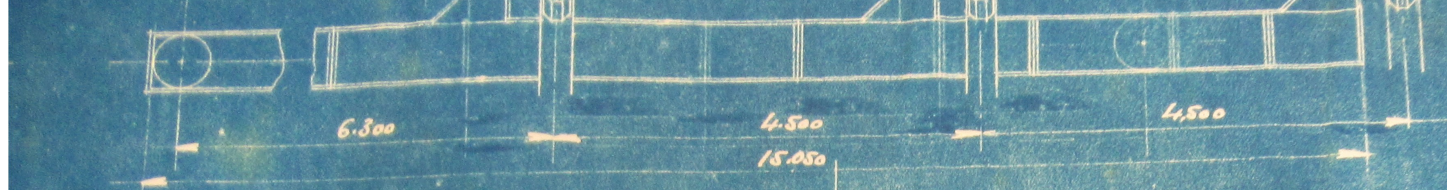
6.500

4.500

Tôle plombée de 1mm d'ép.

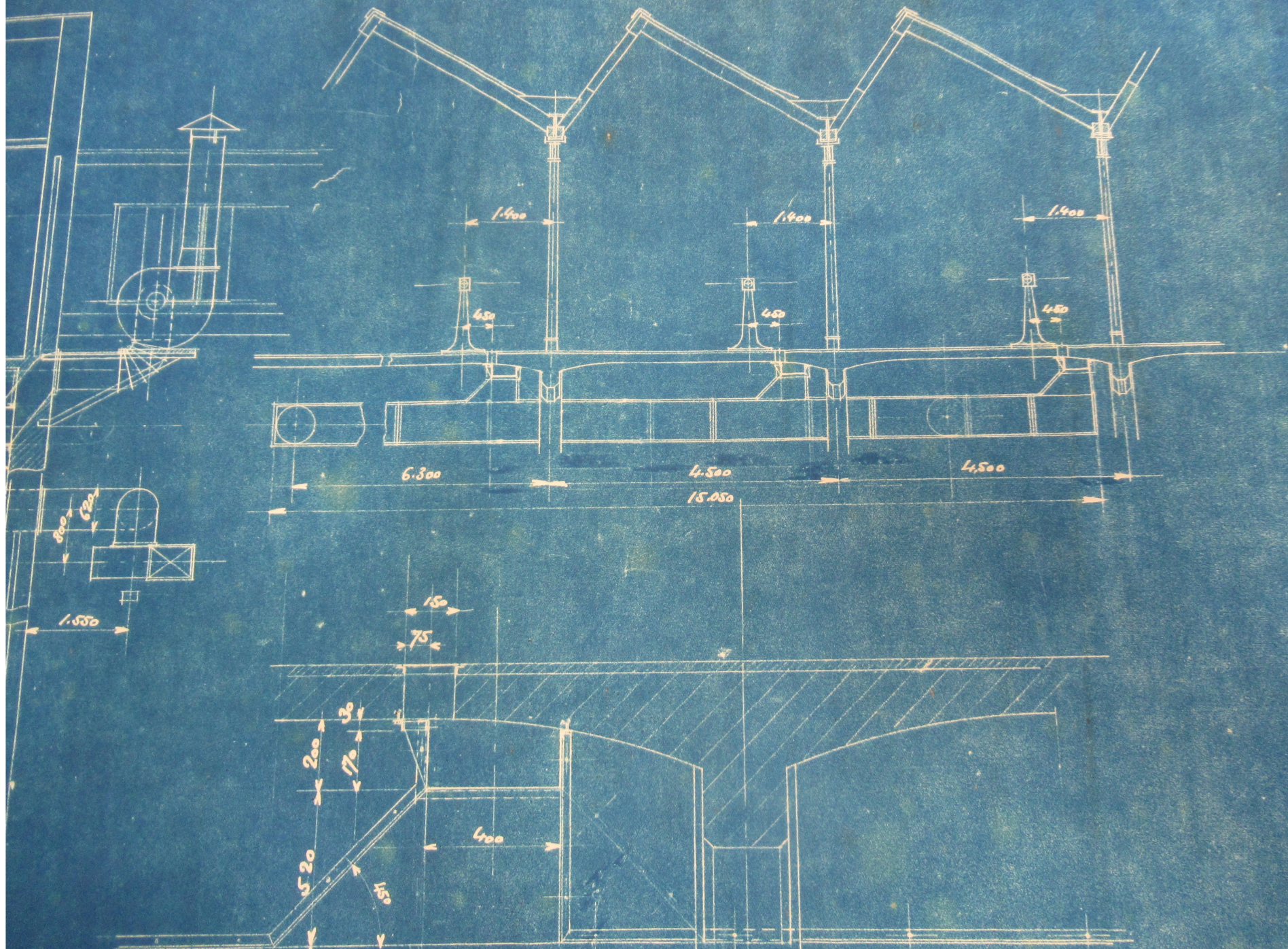
joint en carton

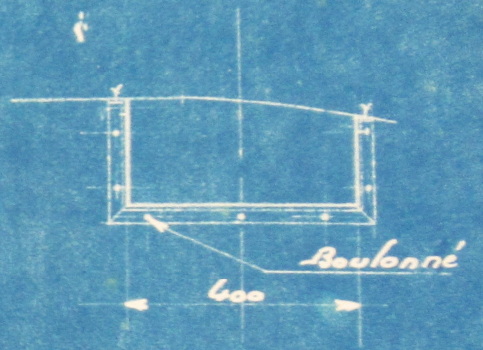
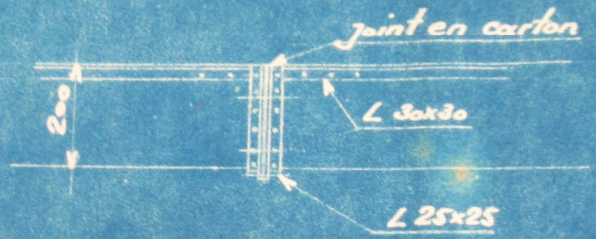


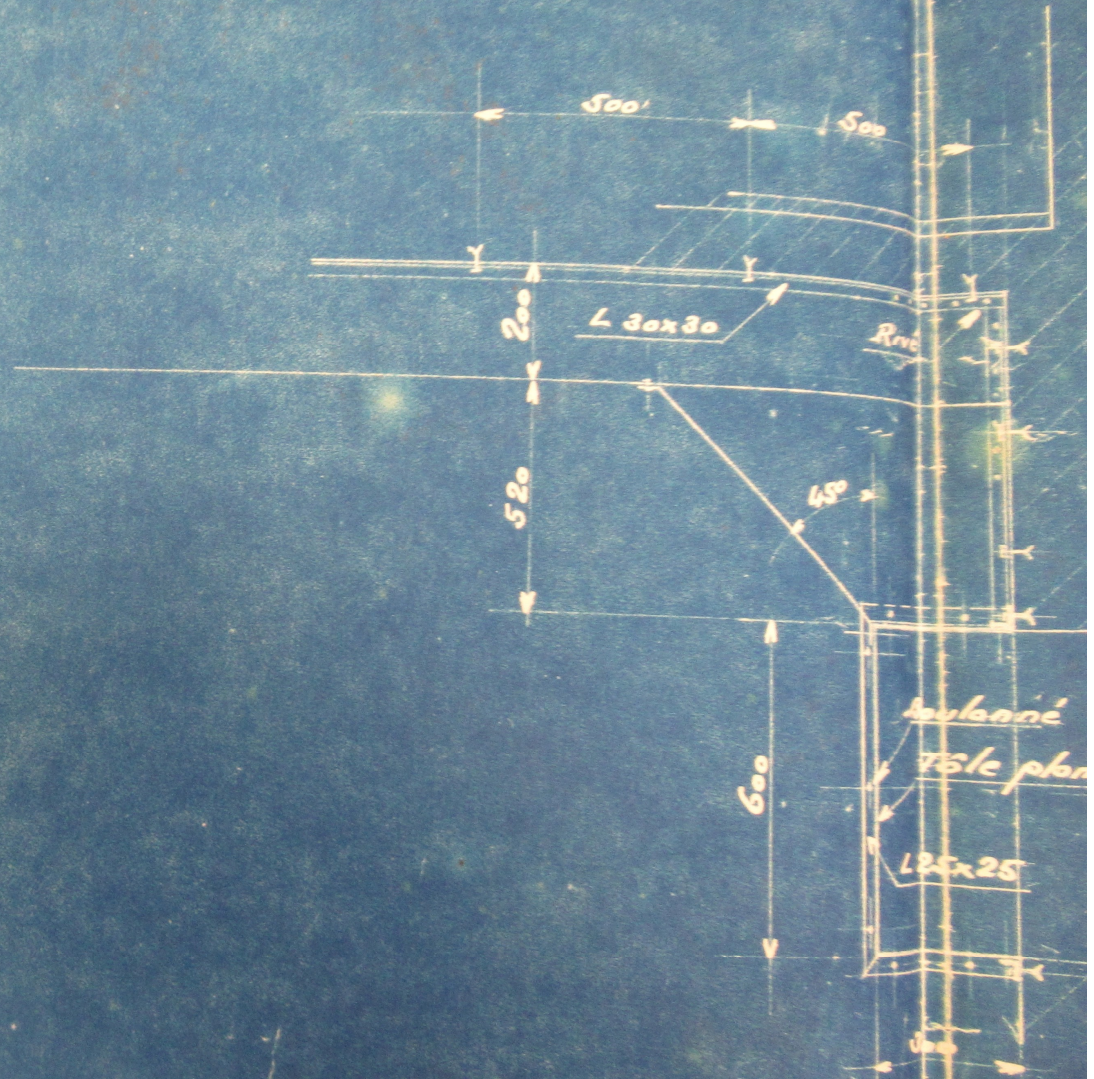
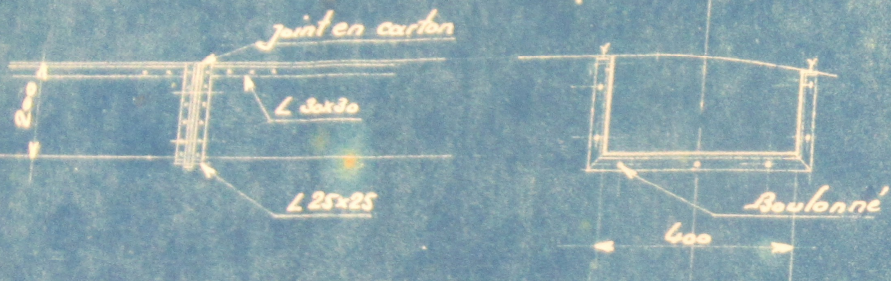


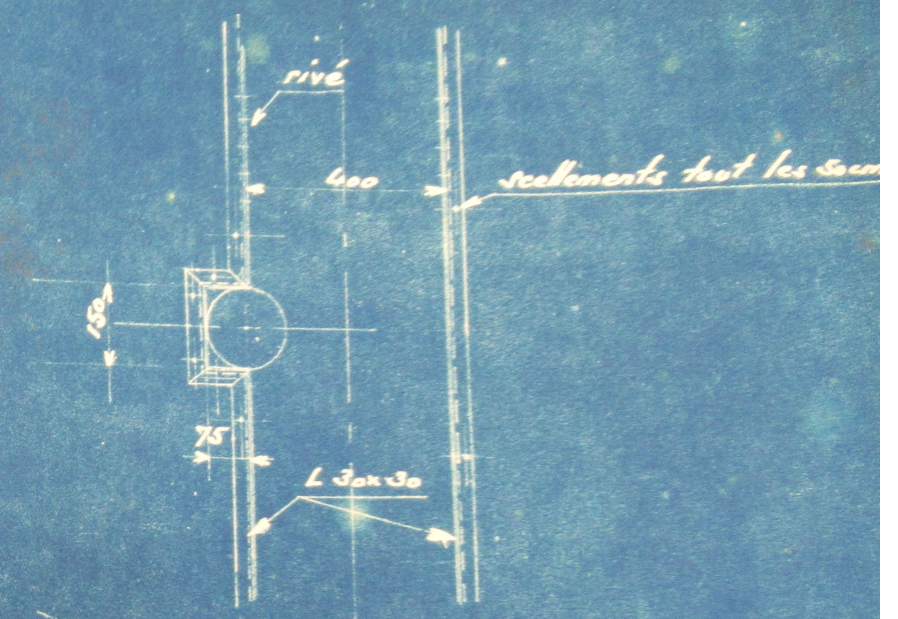
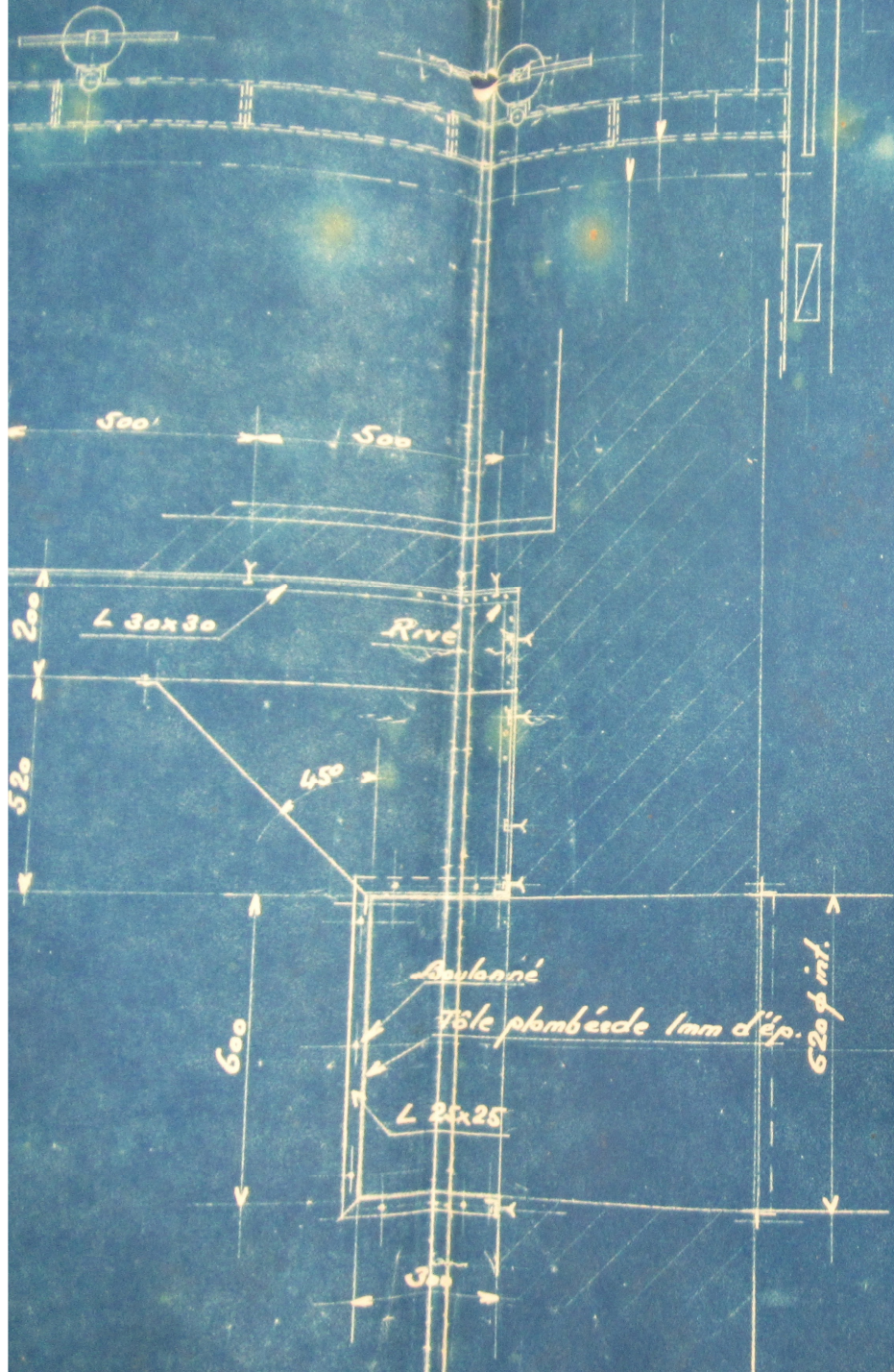
rivé

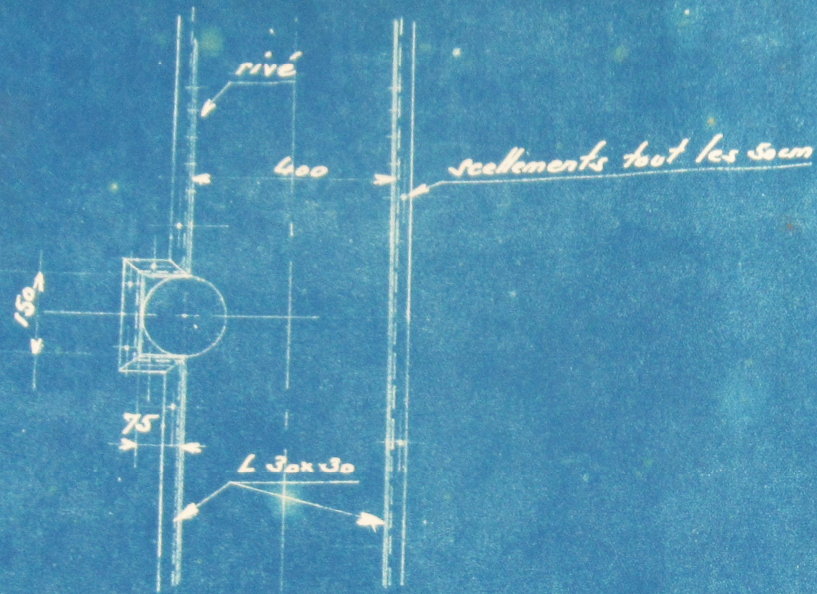
collage de ...











DOLLFUS-MIEG Société Anonyme	
Teinturerie II.	Endo: <i>62</i>
Ventilation du Chevillage.	Date: <i>31-10-29</i>
	Dossier: _____
Michelle 1:50, 1:10	24003

DOLLFUS-MIEG Société Anonyme

Teinturerie II.

Ventilation du
Chevillage.

And
31-10-29

Dossier

Michelle 1:50, 1:10

24003