

12 DMC 85 à 92

# D.M.C

## PLANS D'ENSEMBLE DES ATELIERS

Année 1933

---

### MULHOUSE

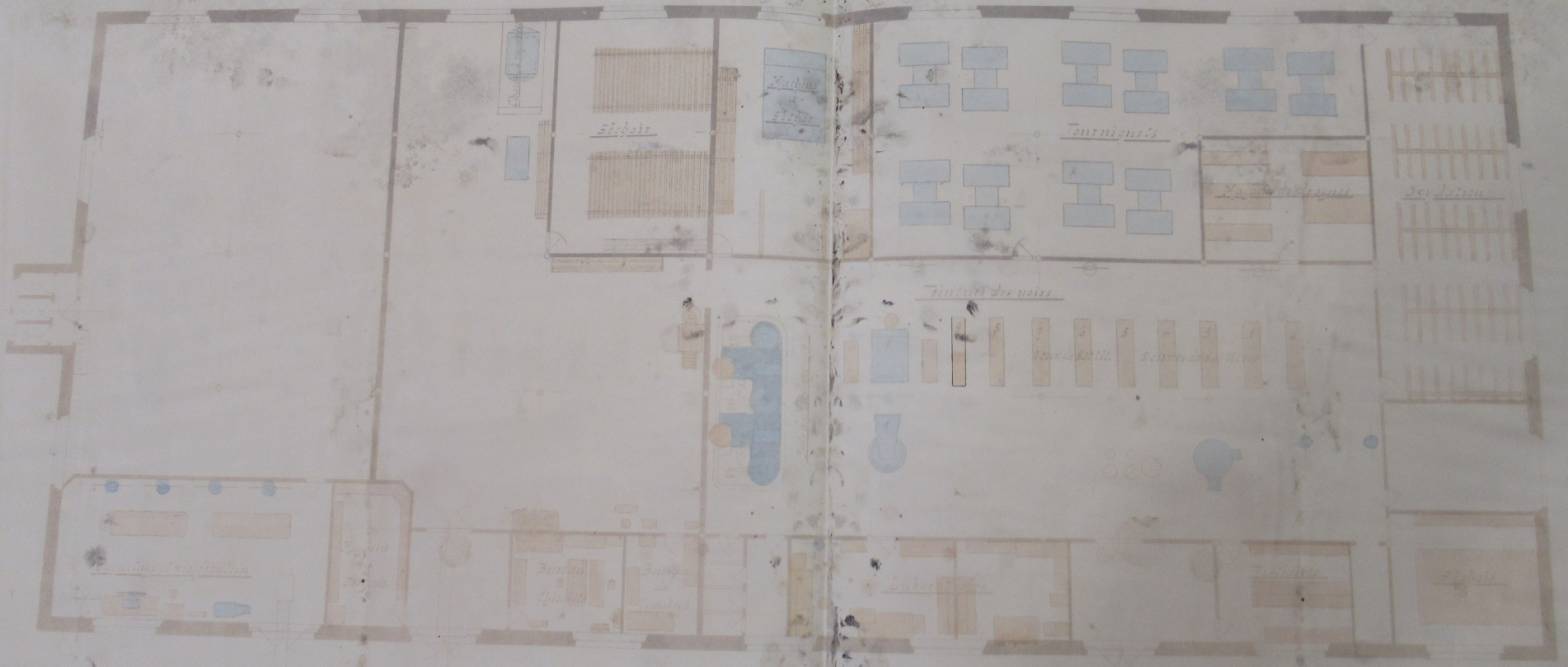
Teinturerie I  
Teinturerie II  
Teinturerie II 1<sup>er</sup> Etage  
Blanchiment I  
Blanchiment II  
Teinturerie  
Blanchiment  
Services divers

### BELFORT

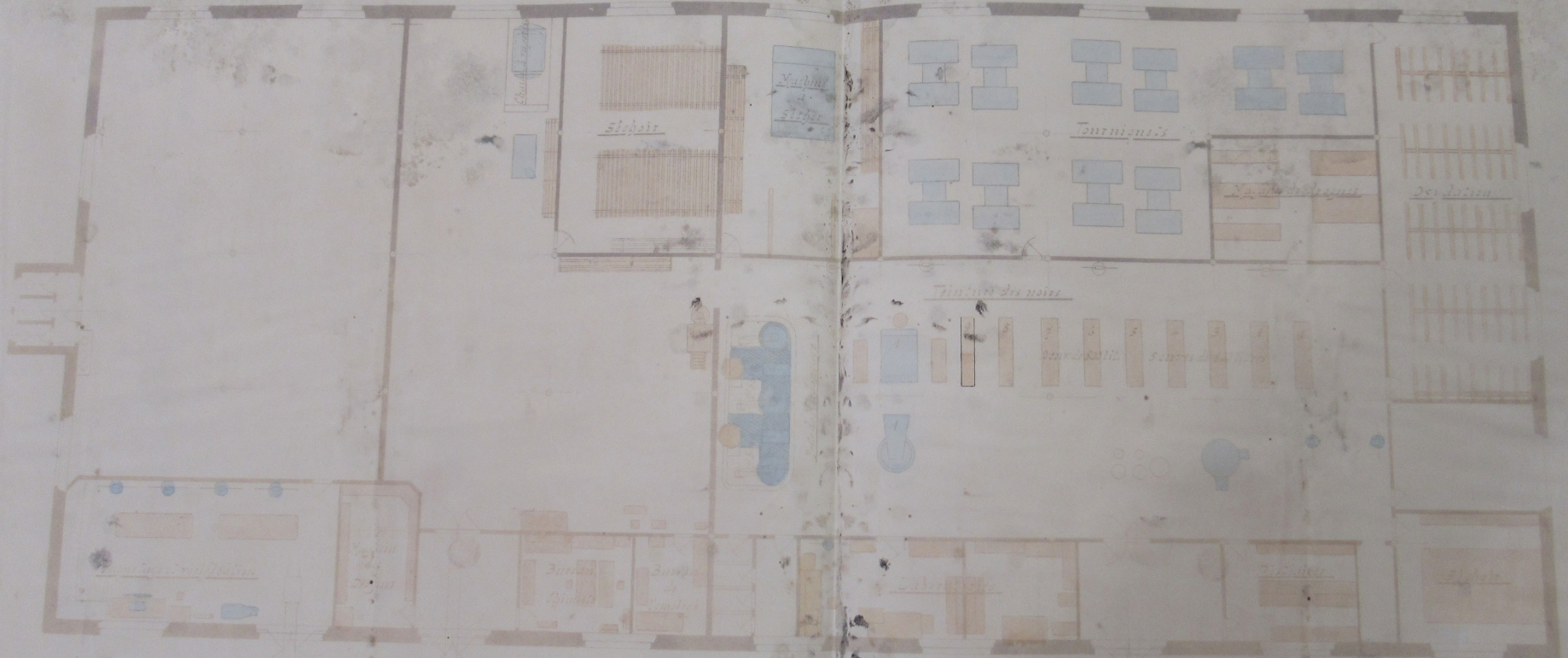
8 plans

M D N C 90

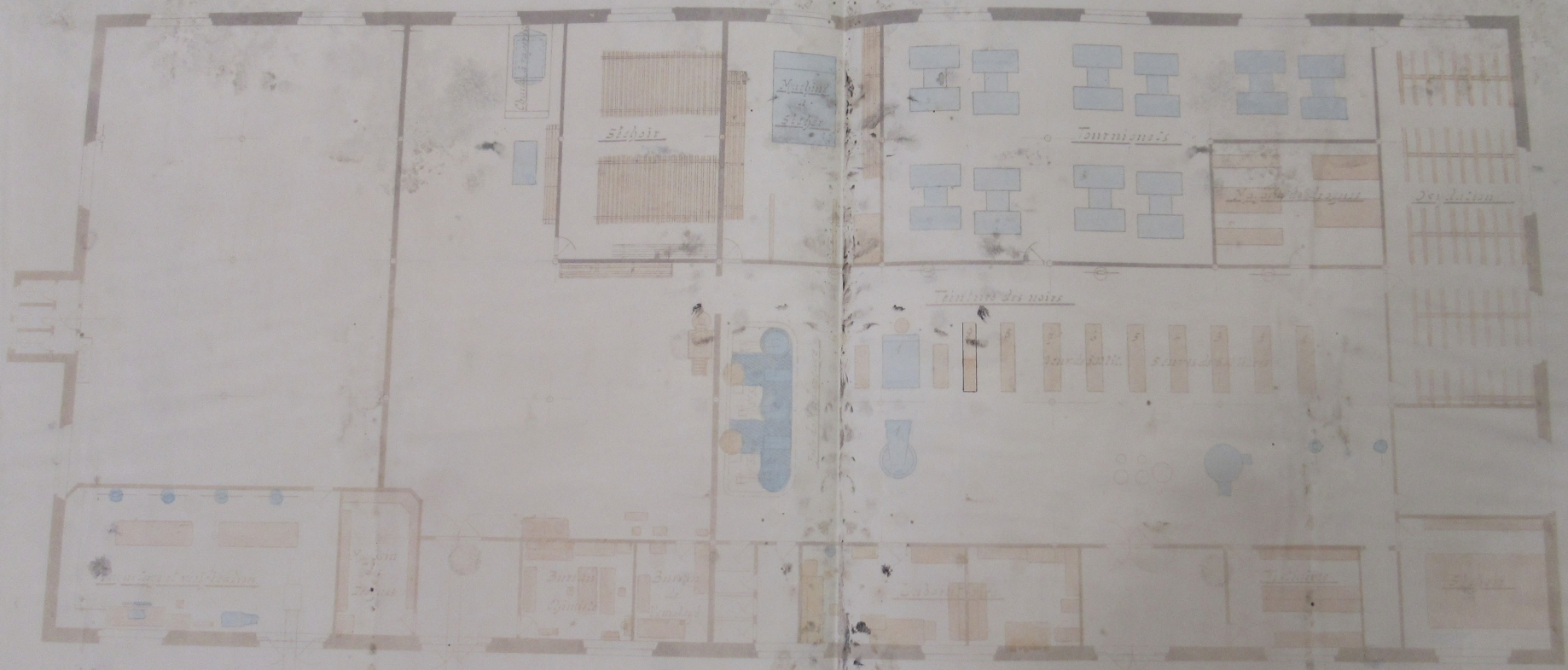
TEINTURERIE

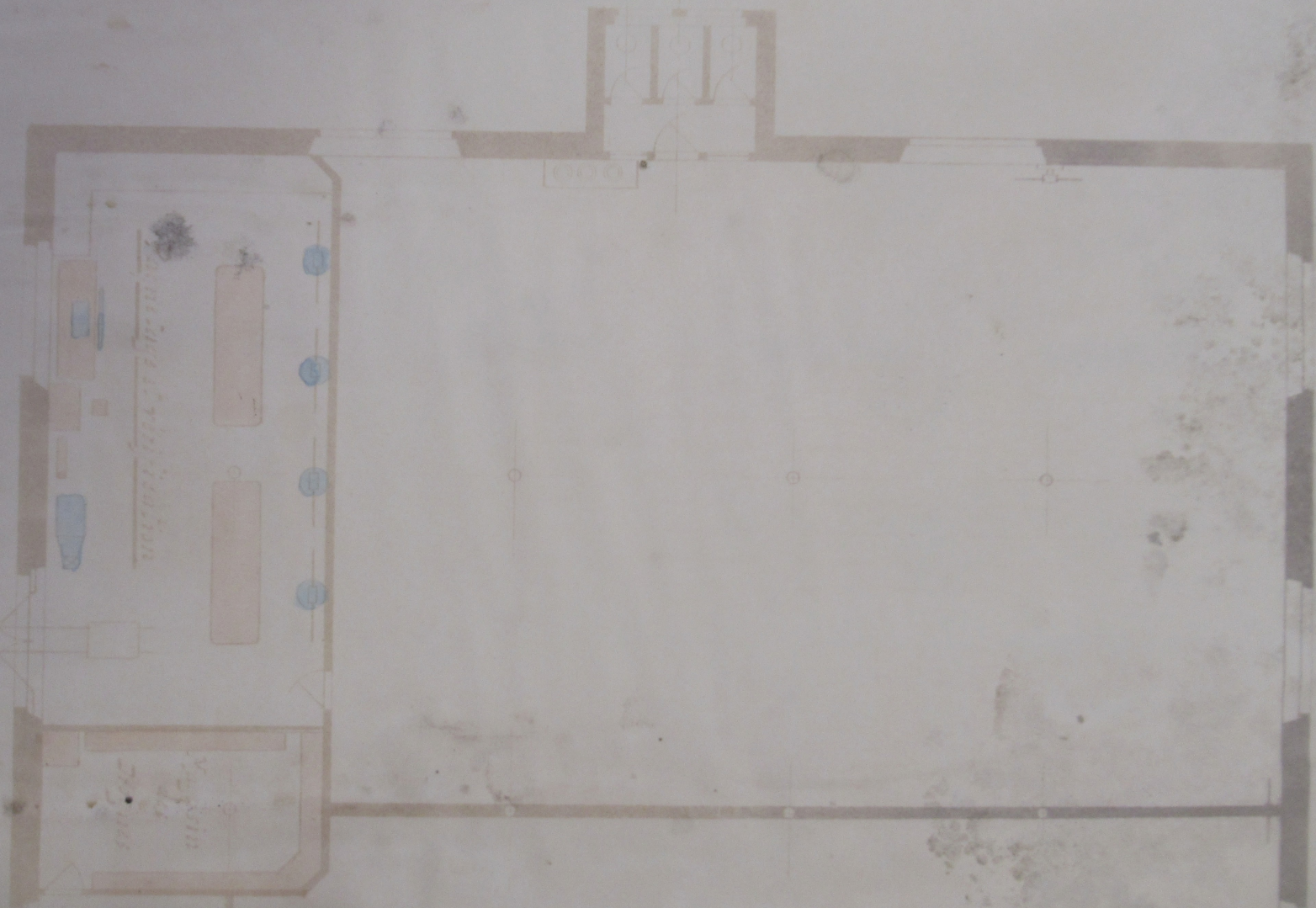


TEINTURERIE



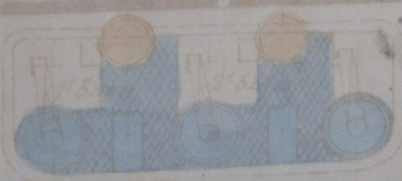
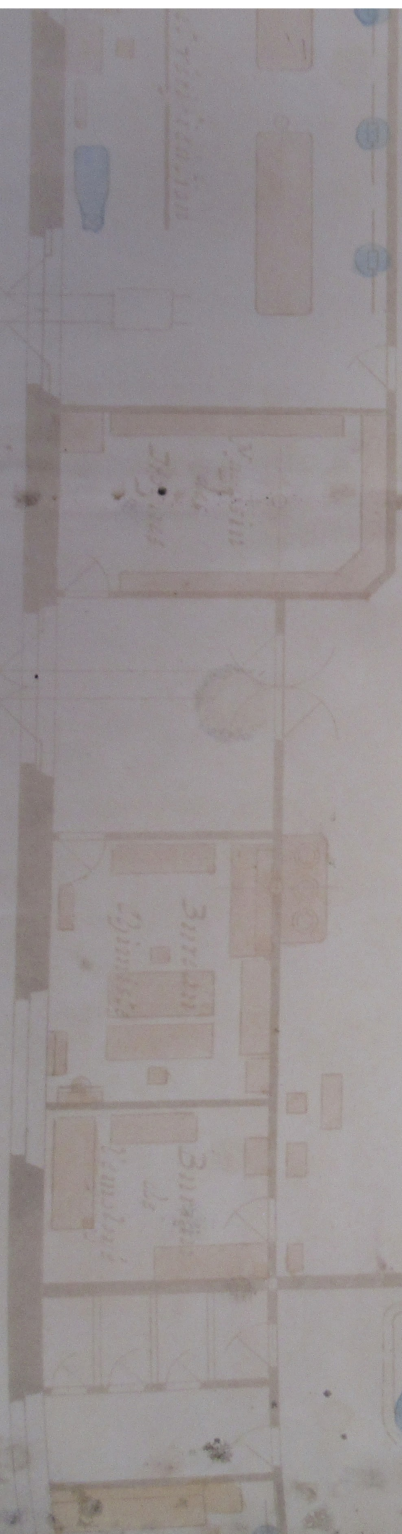
TEINTURERIE



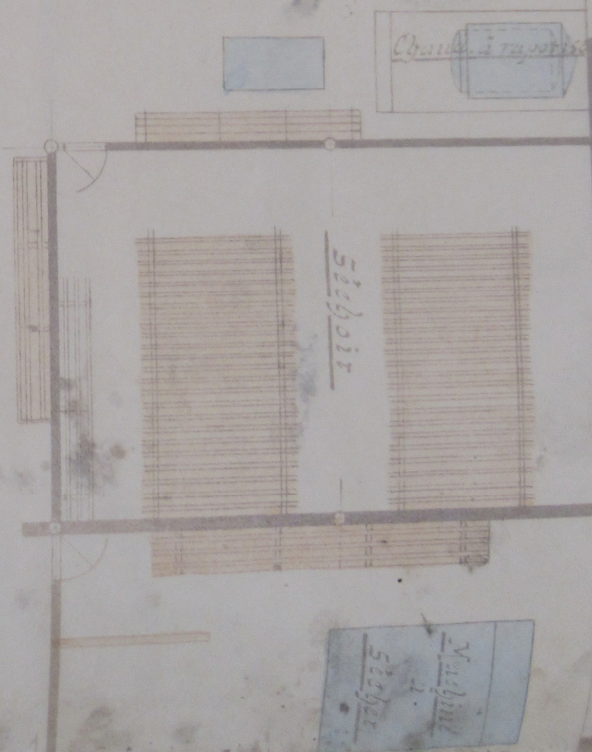


*Handwritten text, possibly a title or description, written vertically in the left-hand room of the plan.*

*Handwritten text, possibly a title or description, written vertically in the bottom-left room of the plan.*



*Ванна*



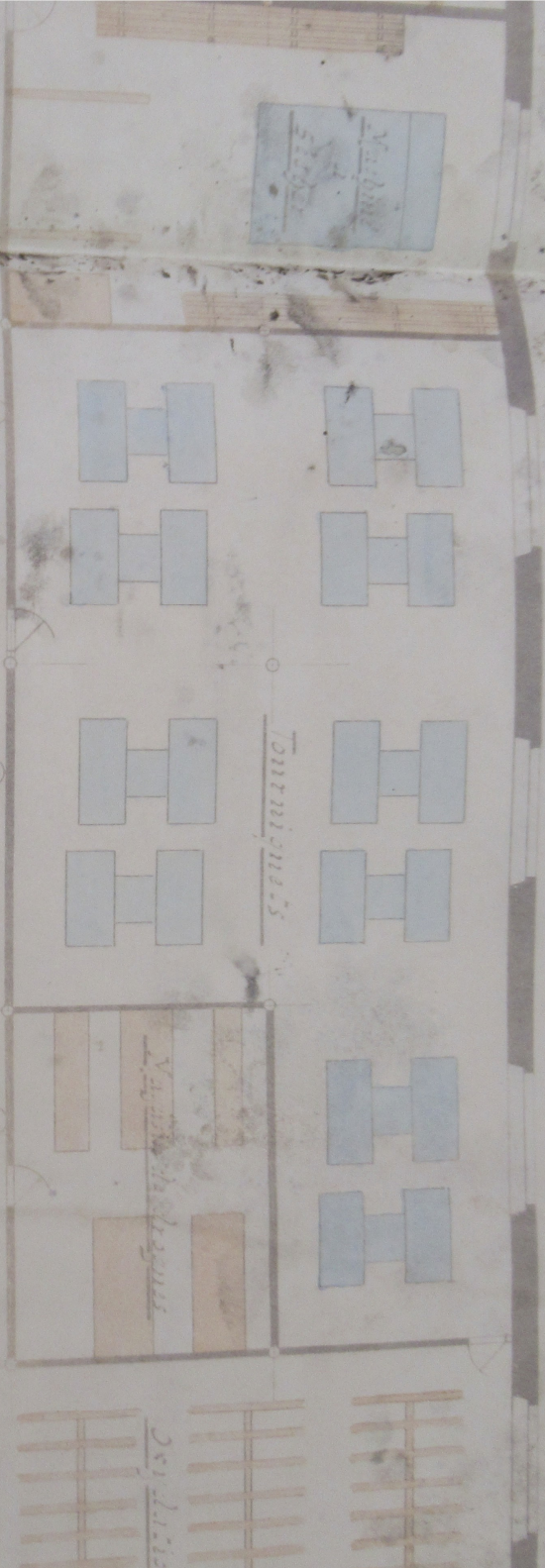
TEINTUR

DOLLFUS - MIEB &

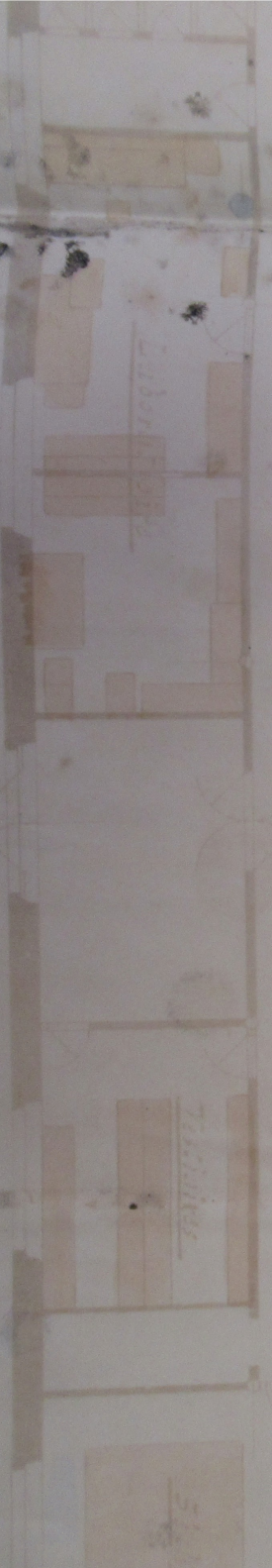
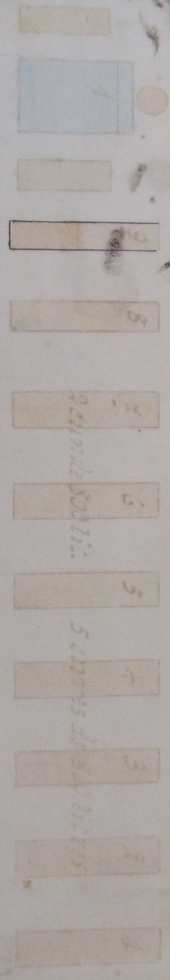
# TEINTURERIE



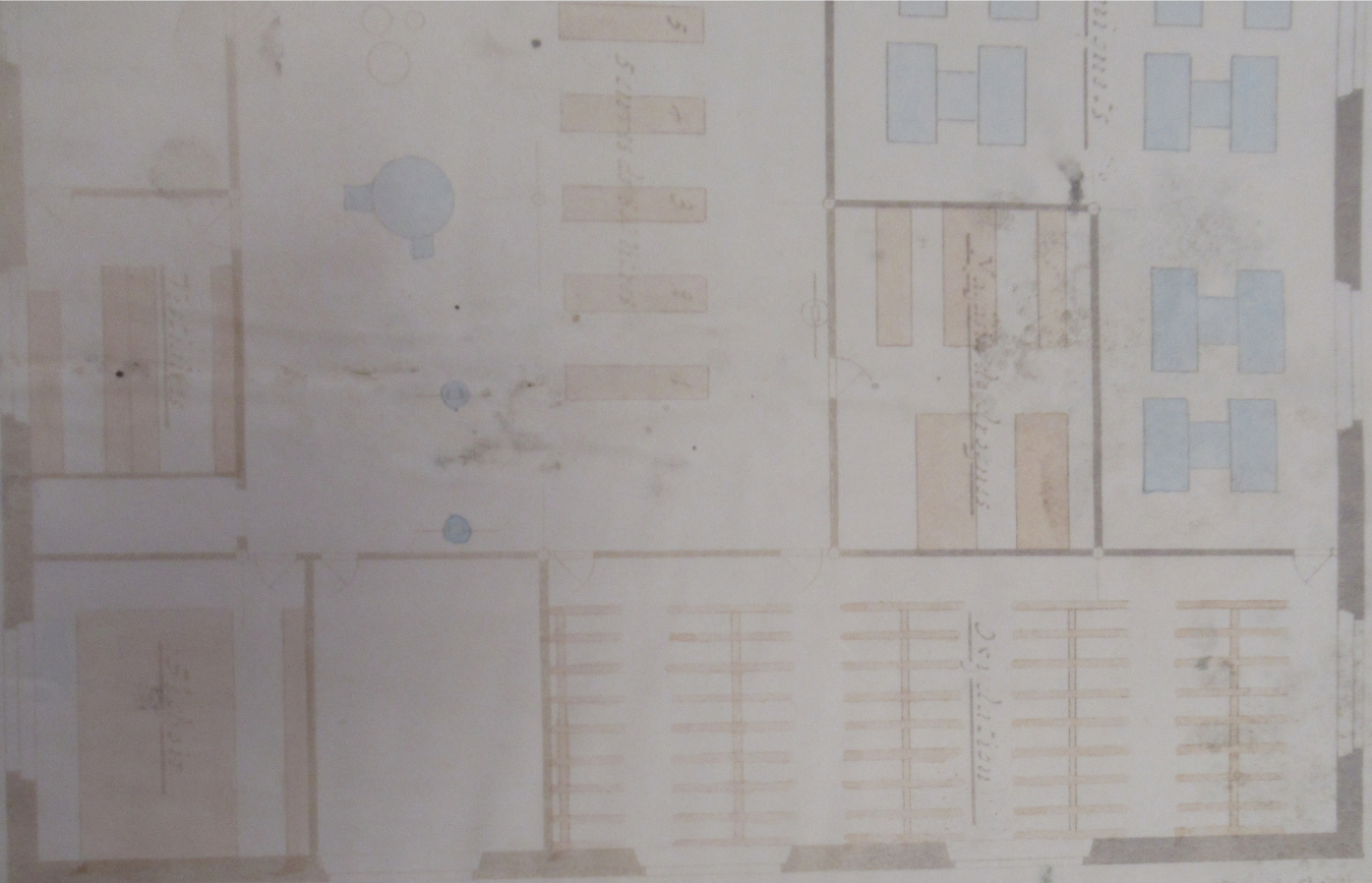
TINTURERIE

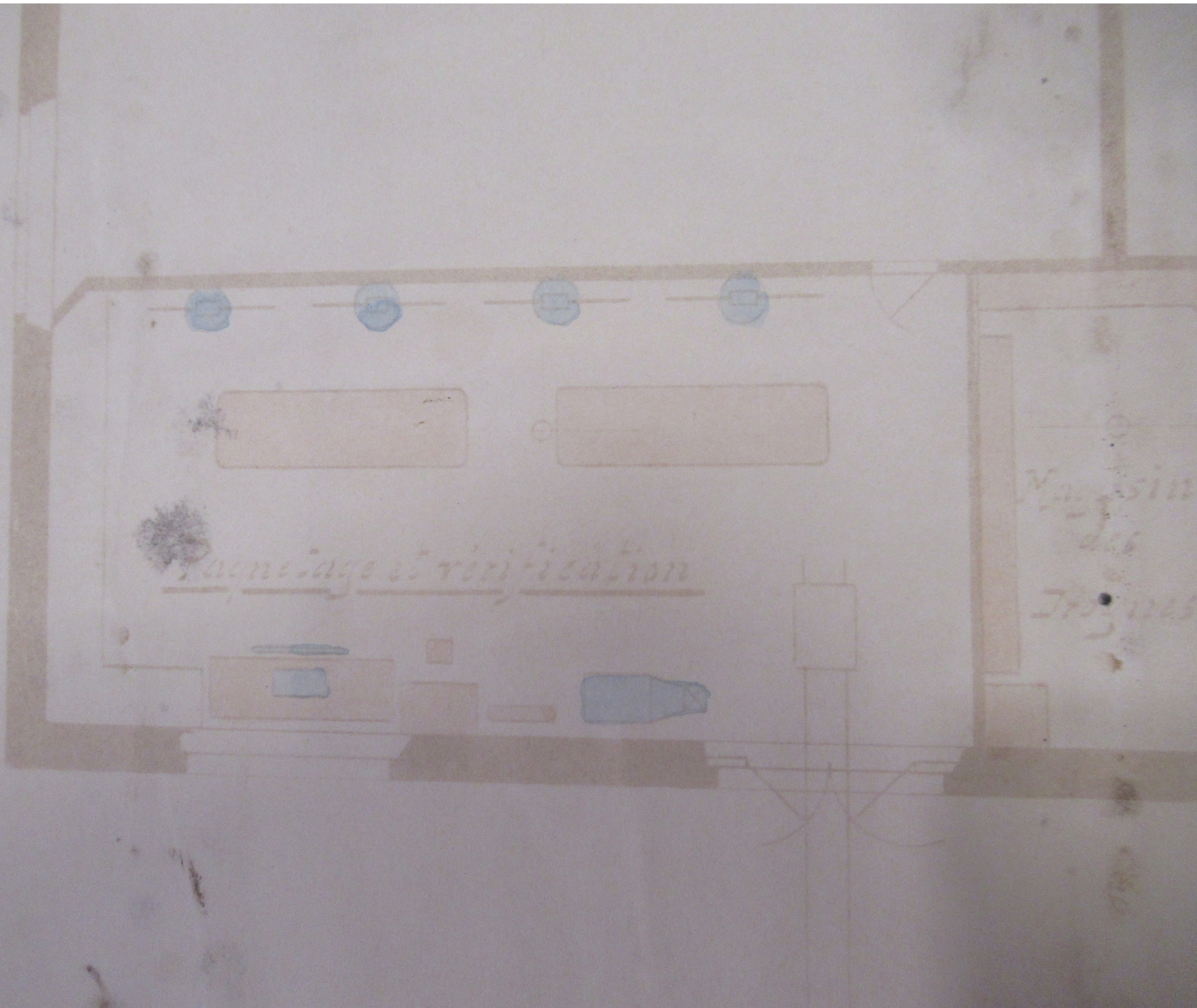


Tintures des noirs




BELFORT





Magasin  
des  
Trois

1012



Bureau  
Chimiste

Bureau  
de  
l'employé

Posto



Laboratorio



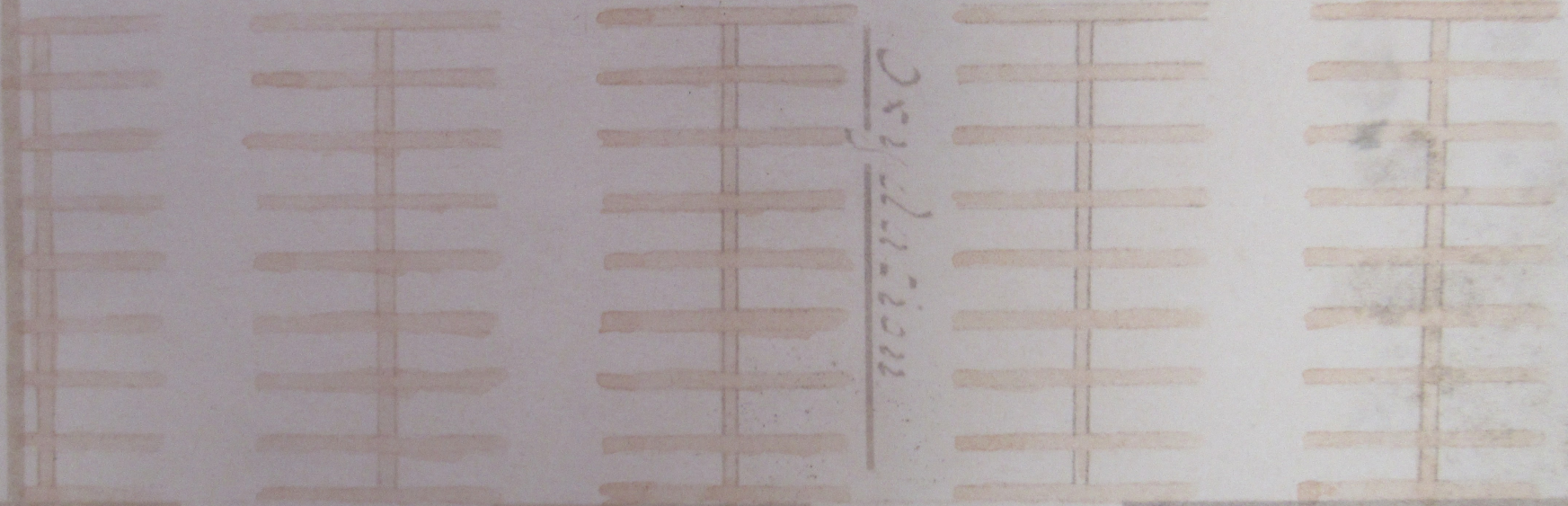


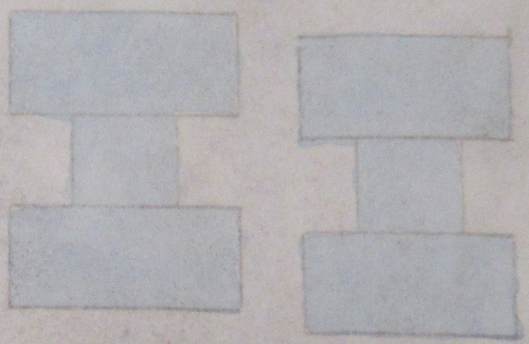
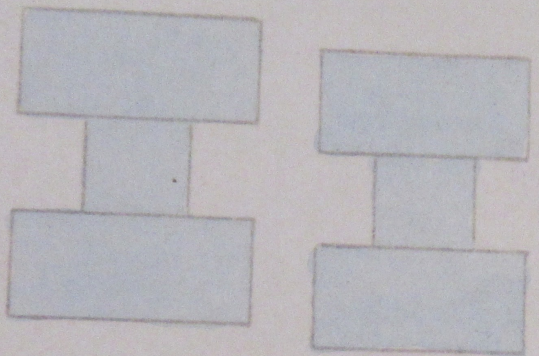
705.11855

51.1017

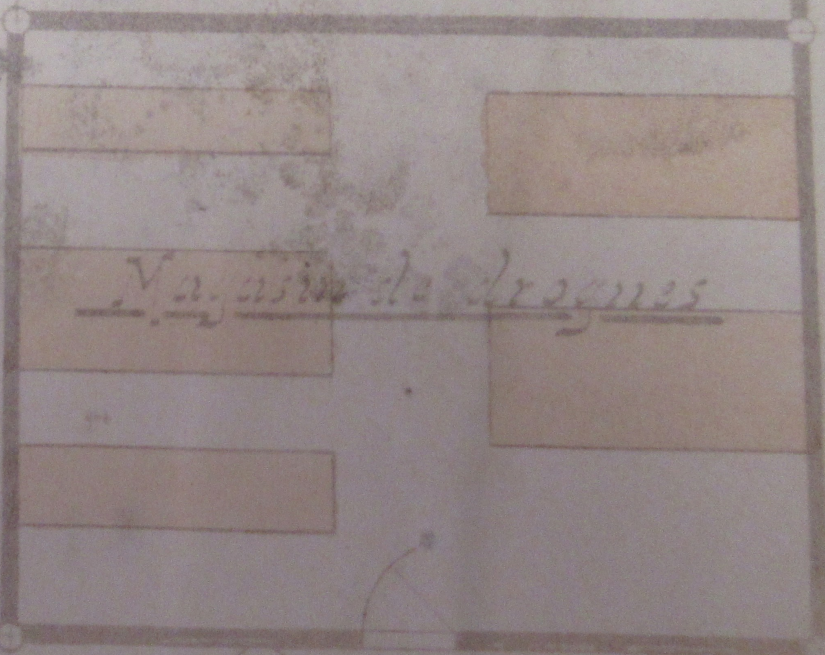
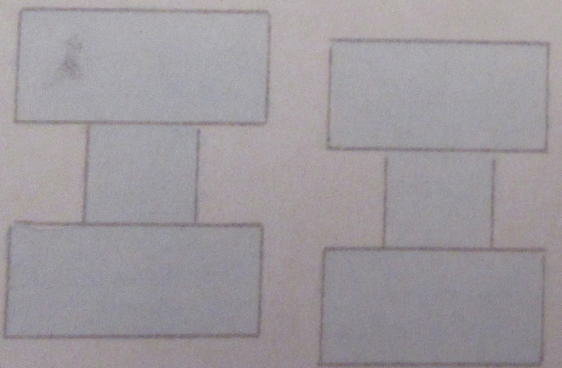
regius

regulation





Tournequets



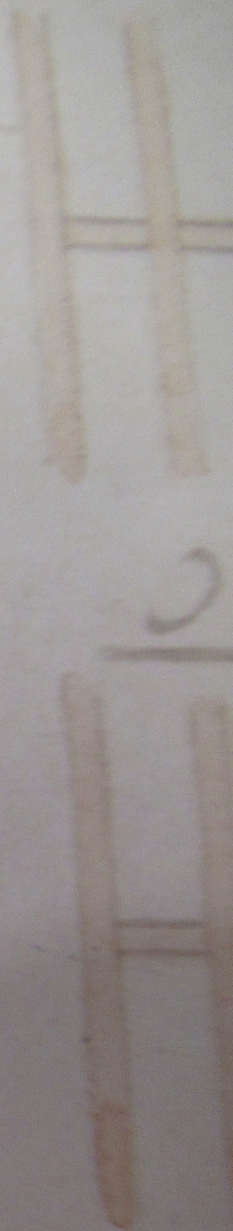
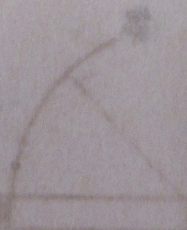
Magasin de dragues



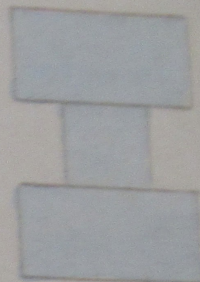
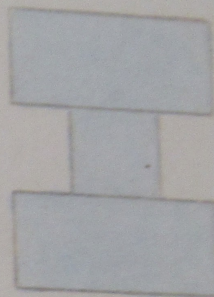
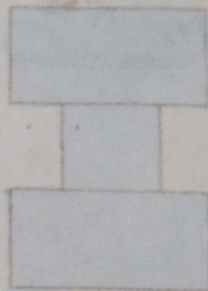
202

maire

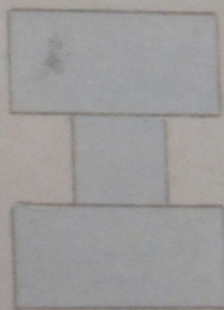
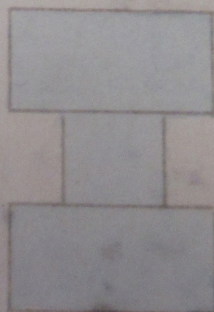
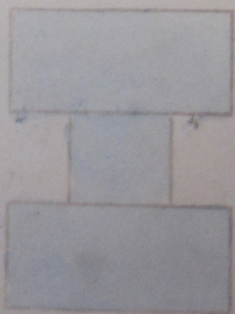
Vagasin de drogues



Machine  
à  
Sécher



Tournevis



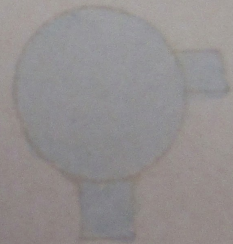
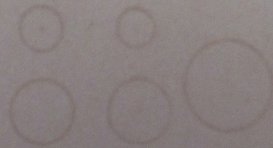
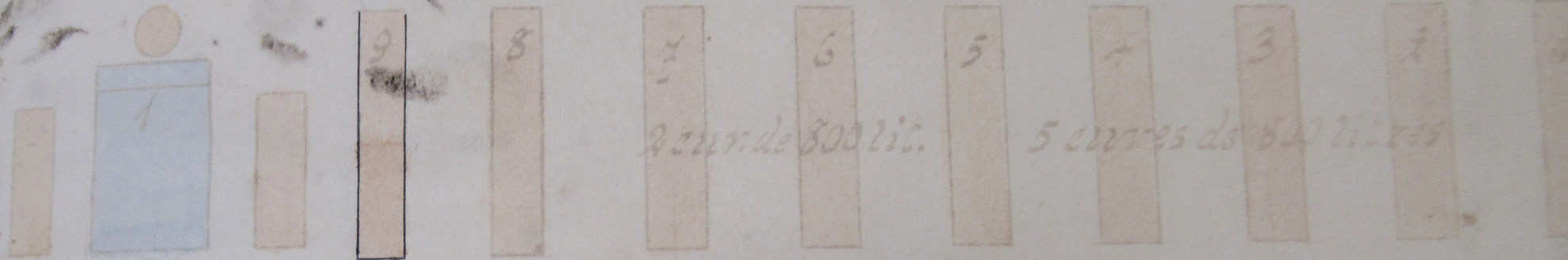
Teinture des noirs

Chaudière à vapeur

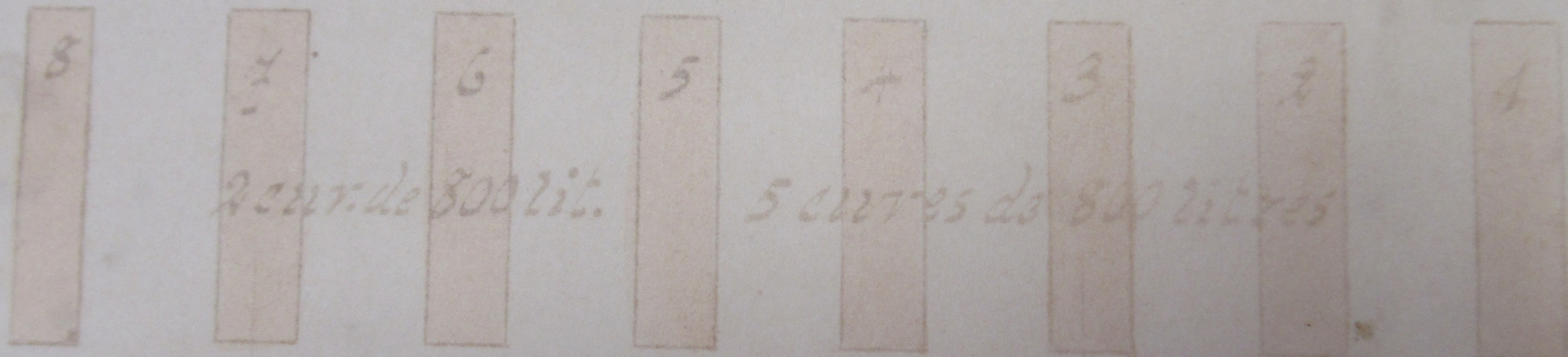
Séchoir

Machine  
à  
Sécher

Teinture des noirs

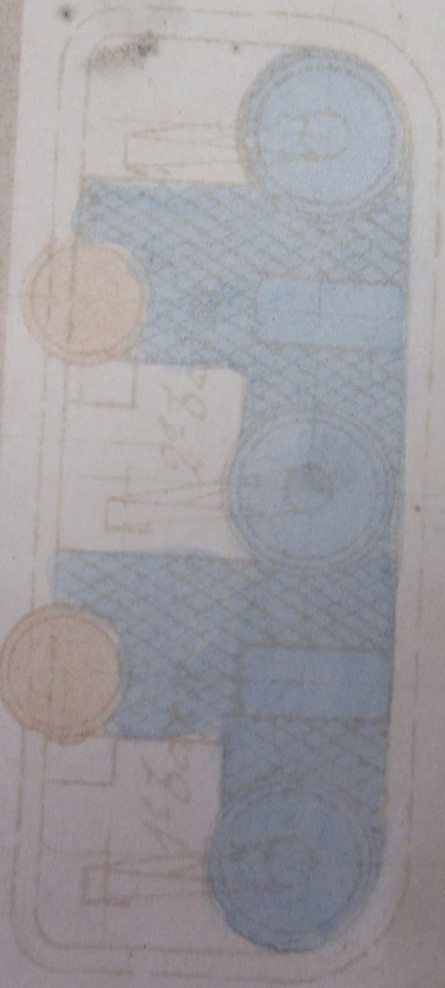


des noirs



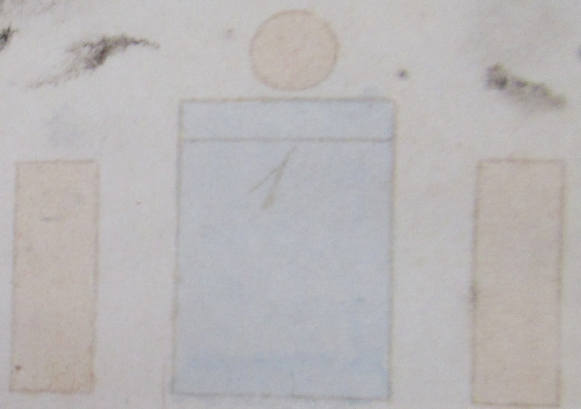
2 curres de 800 lit.

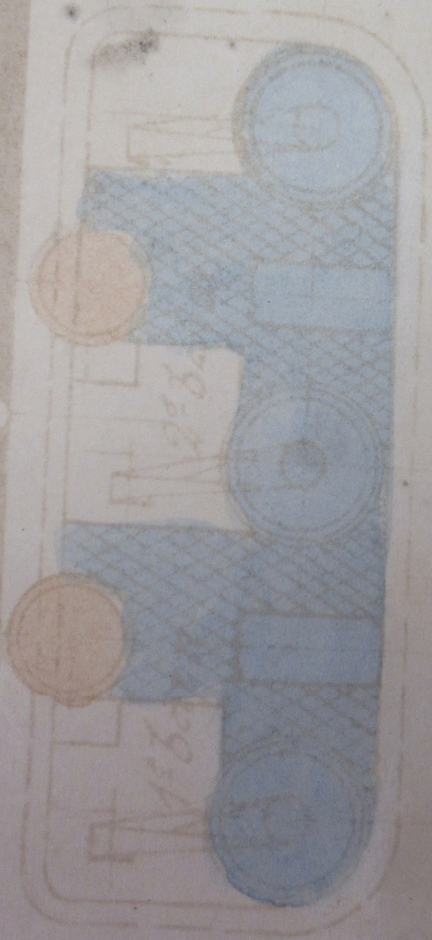
5 curres de 800 litres



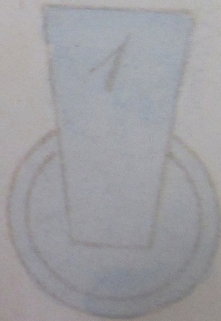
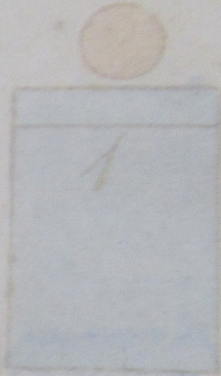
*Poste de Montage*

Terre





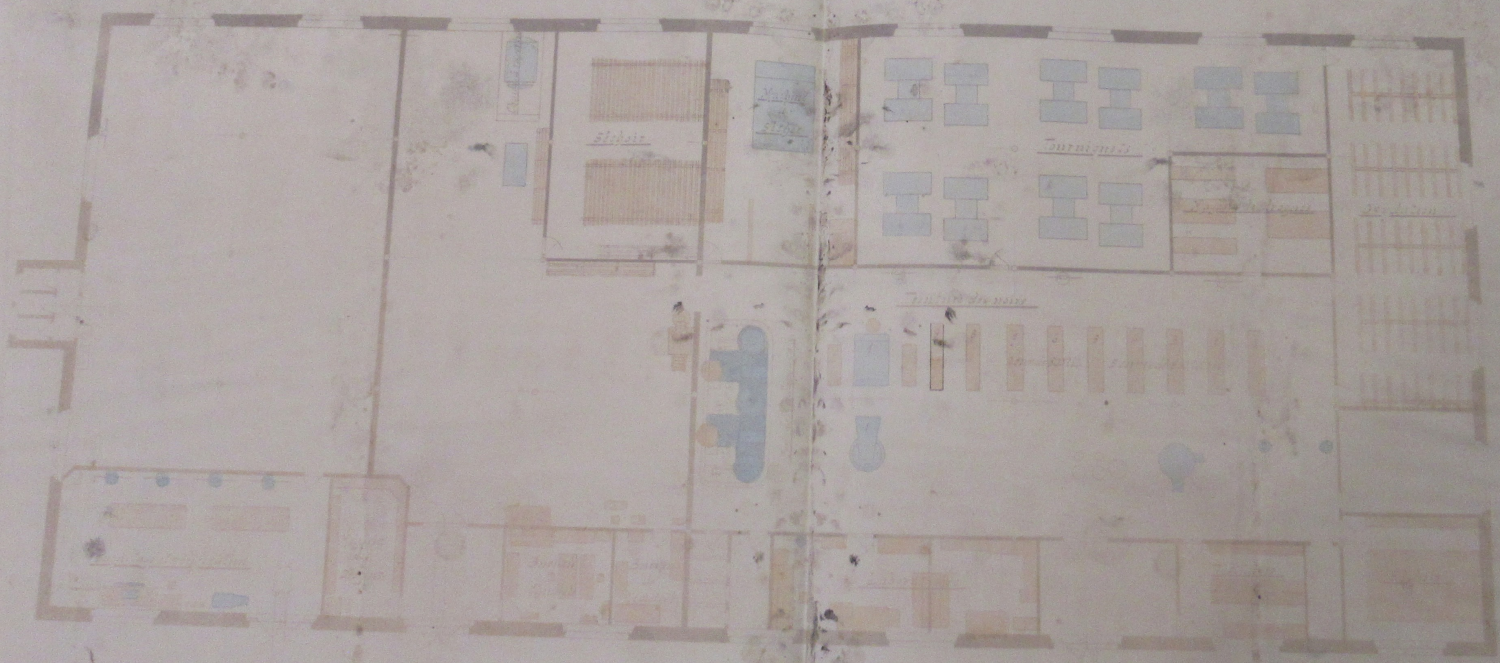
*Poste de Mordant*



*Te*

DOLLFUS-MIEG & C<sup>o</sup> - SOCIÉTÉ ANONYME - ARRISSEMENT DE BELFORT

TEINTURERIE



NO. 1062

№ 19064

EGHELLE 1-100