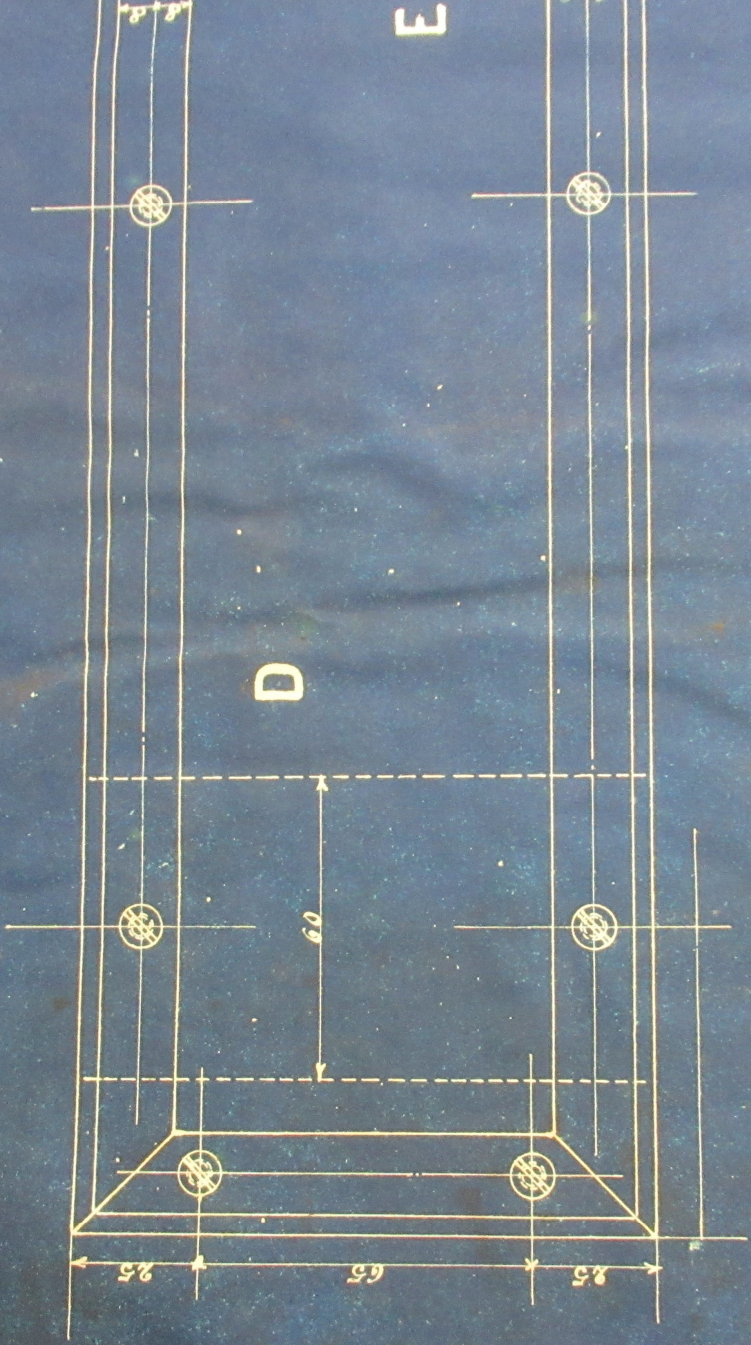
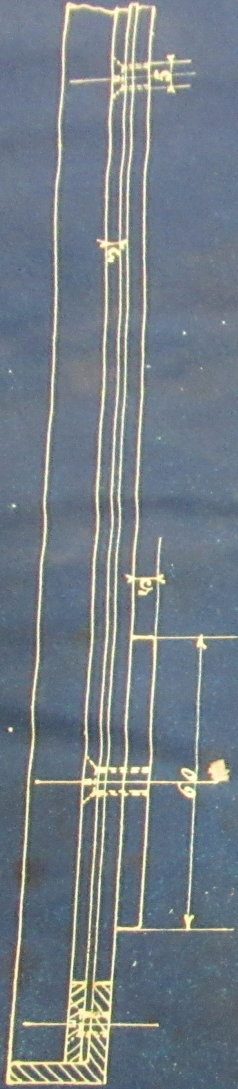
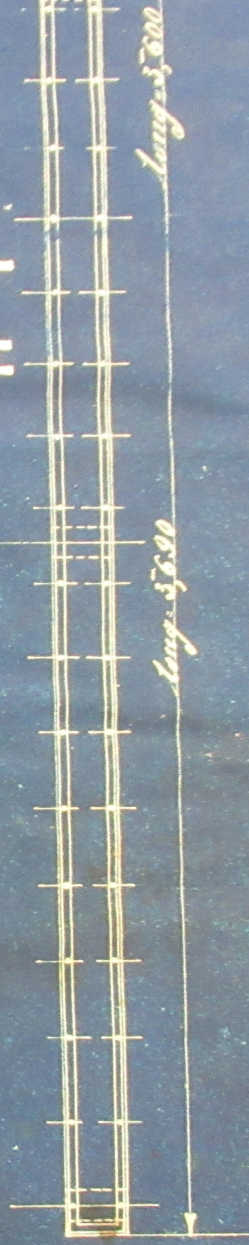


12 DMC 135-180

12 DMC 140



HI



long. 50

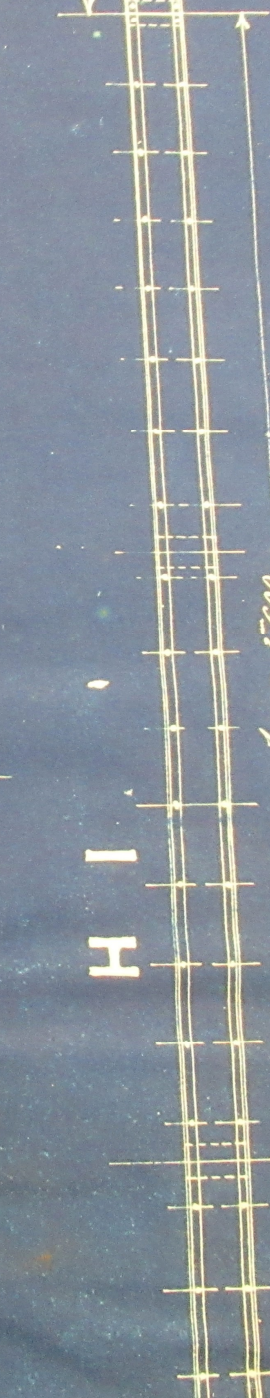
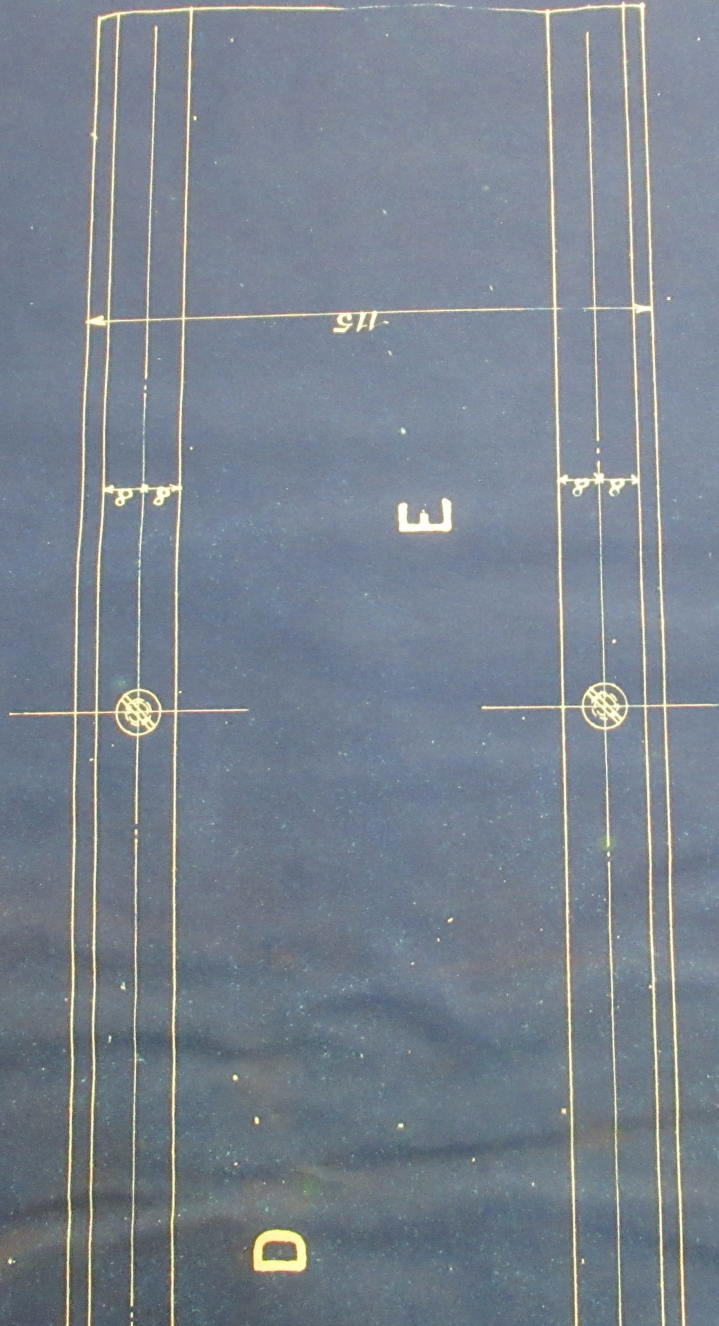
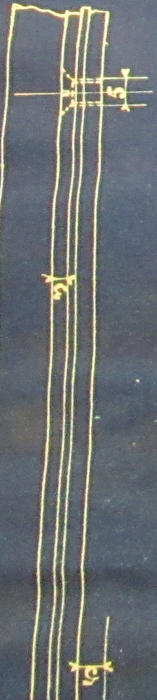
long. 50

F



G





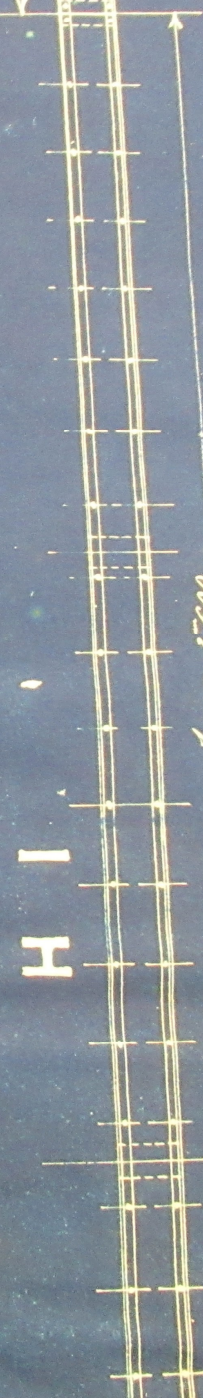
Long = 3,600

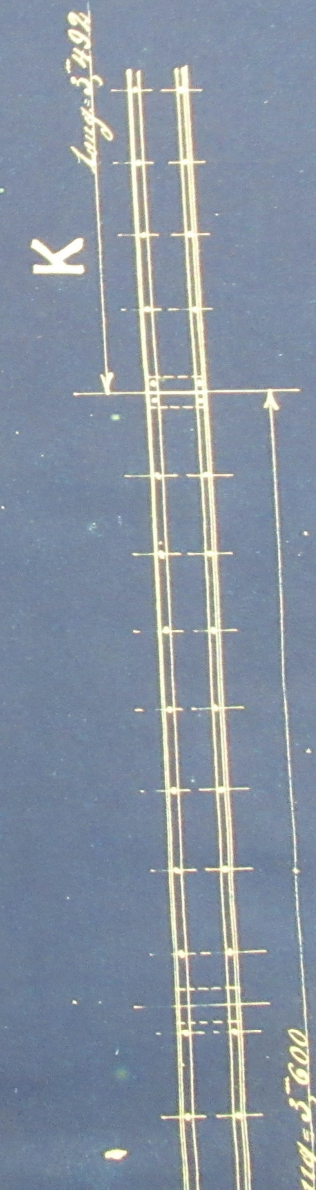
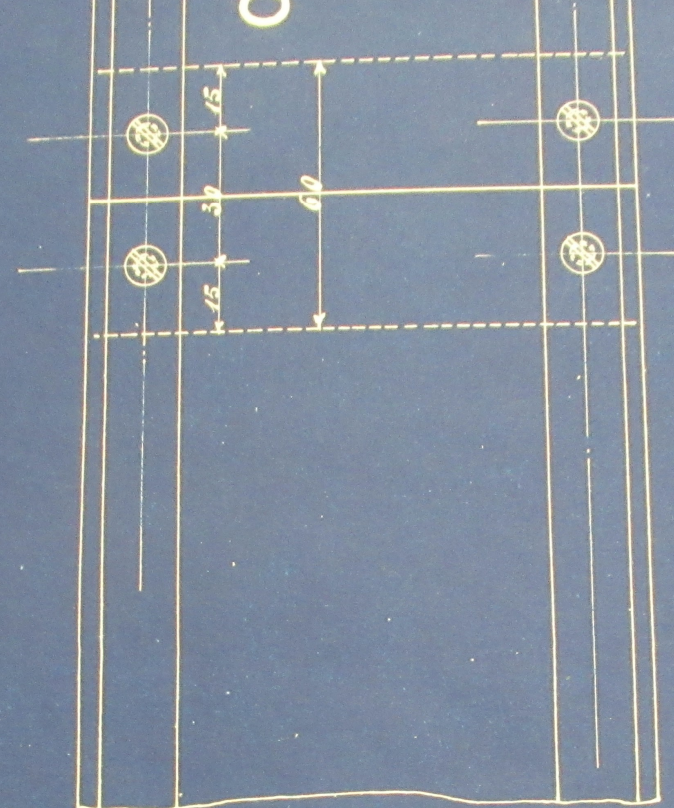
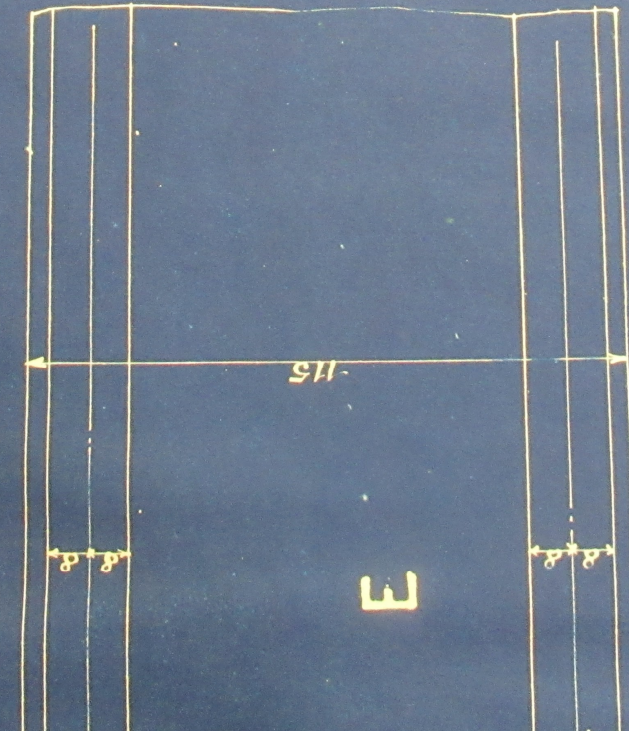
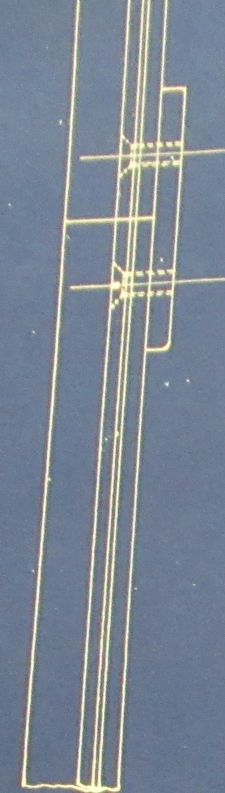
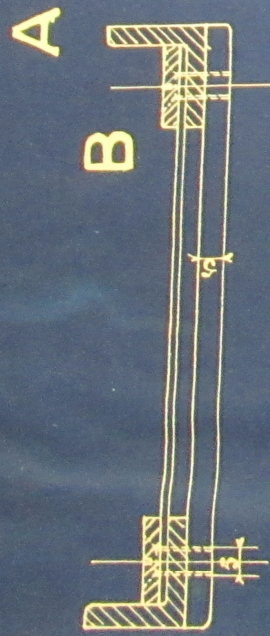
Long = 3,600

G



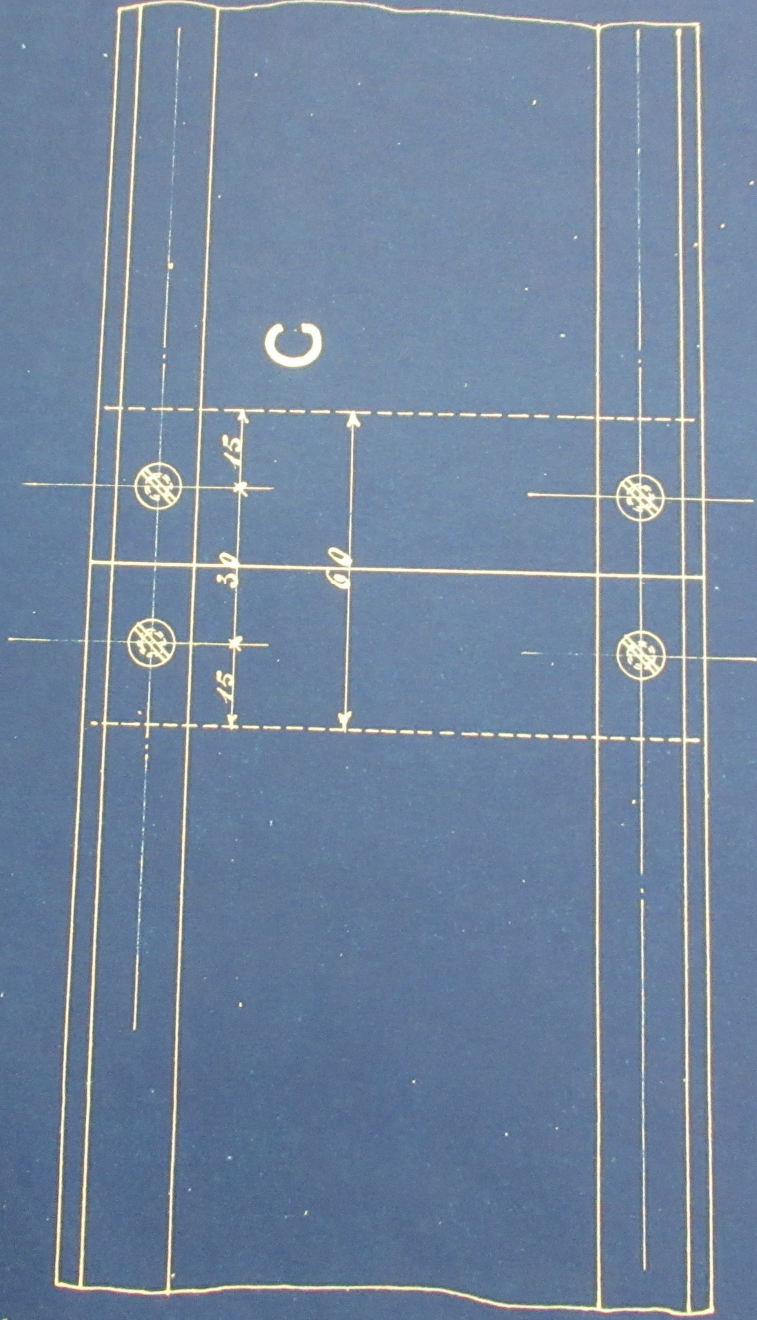
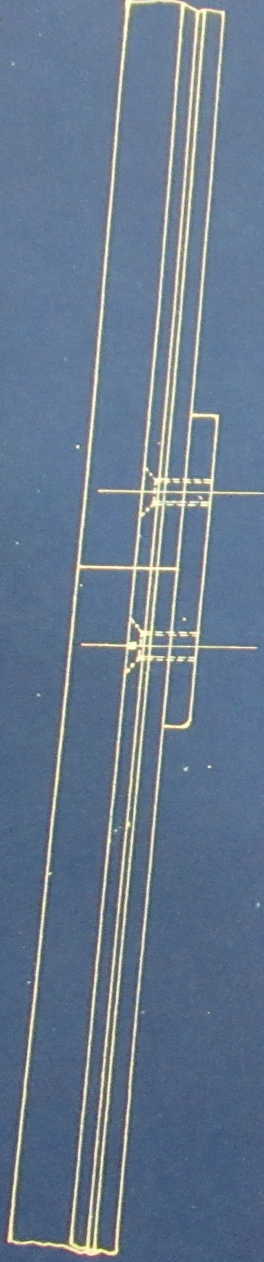
K





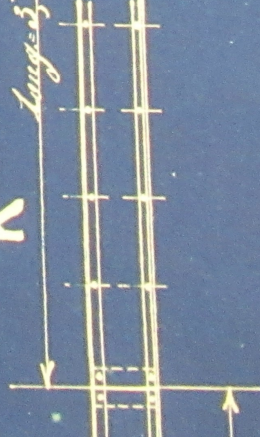
Position	Quantity	Designation	Material	Notes
K	2			
I	2			
H	2			
G	48			
F	208			
E	4			
D	4			
C	1			
B	1			
A	1			
Total		208		

A

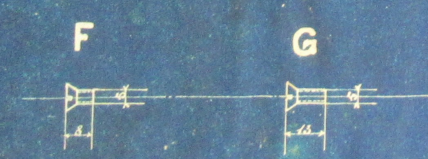
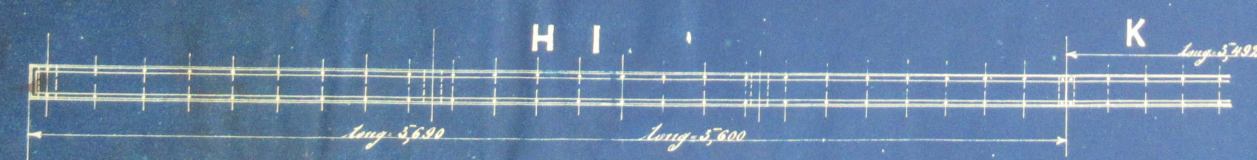
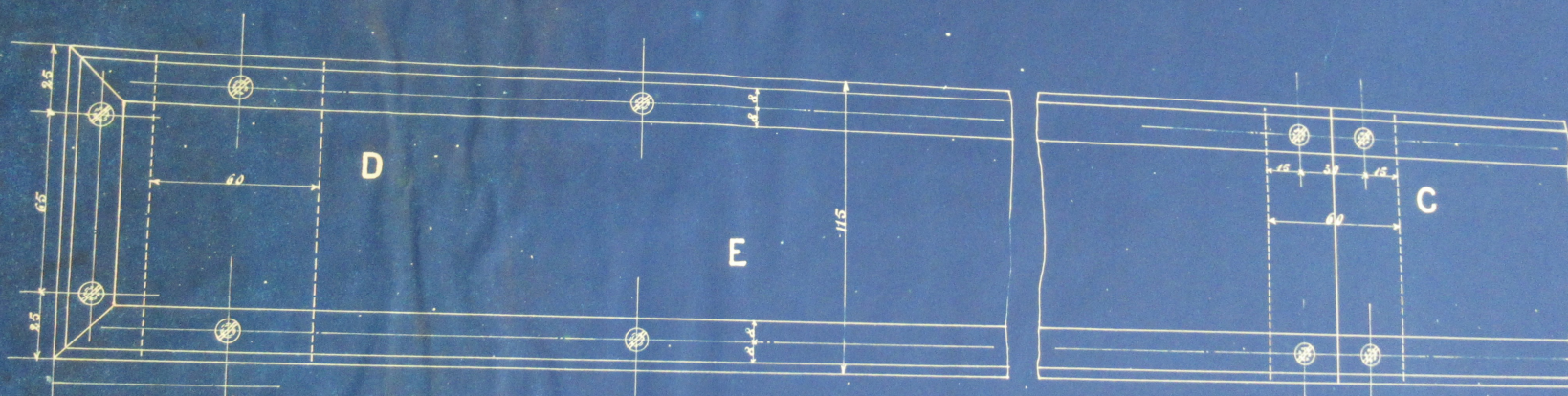
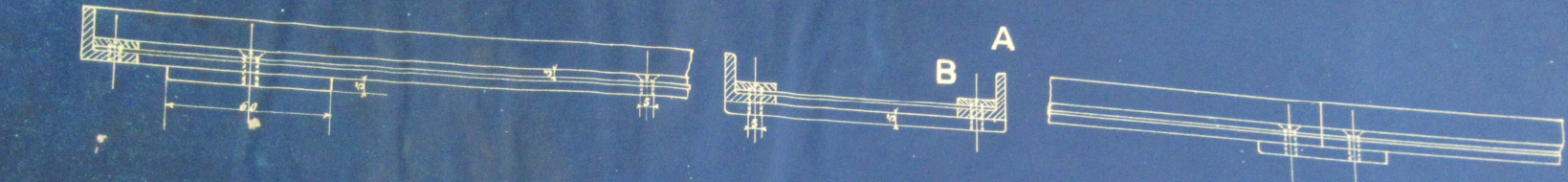


K

Long. = 5402



Q	K	Tablettes.	Per	6.3492
2	I	"	"	2.5000
2	H	"	"	2.3090
48	G	vis P	"	
888	F	"	"	
	E	Dis. per fire	"	
16	D	Plaquettes	"	
4	C	"	"	
	B	for plat en. 44m. est.	"	16x3
	A	Per a corriere en. 44m.	"	30x204



Qté	Ref	Designation	Mat.	Observation	
2	K	Tablettes	Ac	4.5 x 92	
2	I	"	"	7.5 x 90	
2	H	"	"	7.5 x 90	
4 d	G	121 P	"	7.5 x 90	
28 d	F	"	"	"	
	E	206, perforée	"	"	
16	D	Plaqueilles	"	"	
4	C	"	"	"	
	B	100 plat en: 48 m. 108	"	40 x 5	
	A	Fer à corseilles en: 48 m. 108	"	38 x 50	
Pièces	Pos	Mod N°	Designation	Mat.	Observation
			DOLLFUS MIEG & C ^{ie}		Société anonyme.
			Finissage III.		
			Machin à gazer à		
			100 petits lances.		Dessiné par
					G. Fey.
			Echelle: 1/2 1/10.		N° 13248.