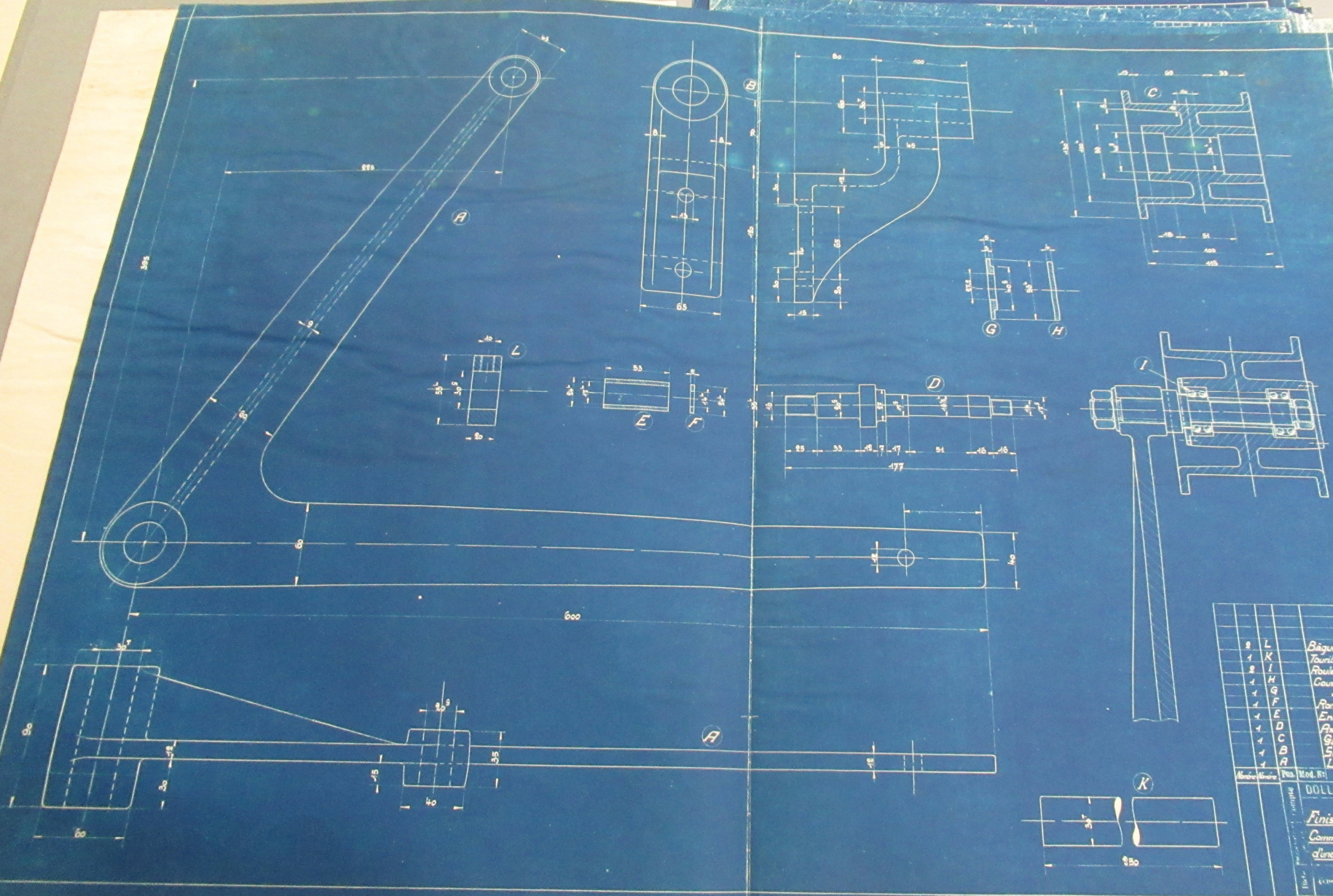


12 DMC 135-180

A2DMC 136

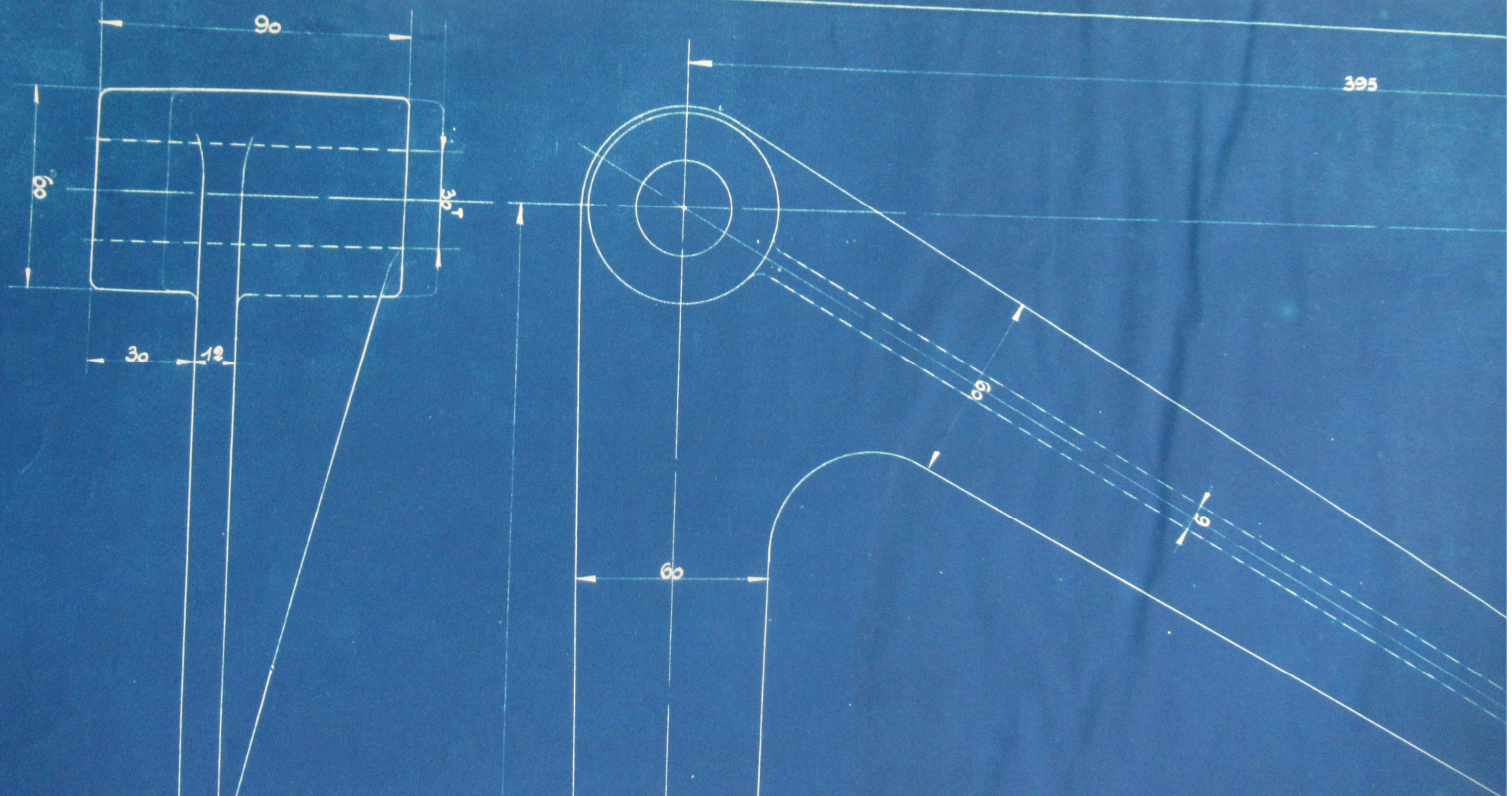


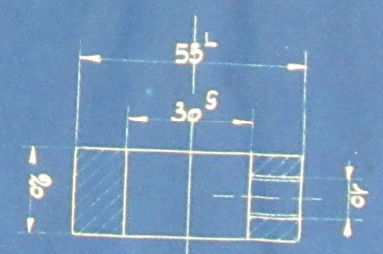
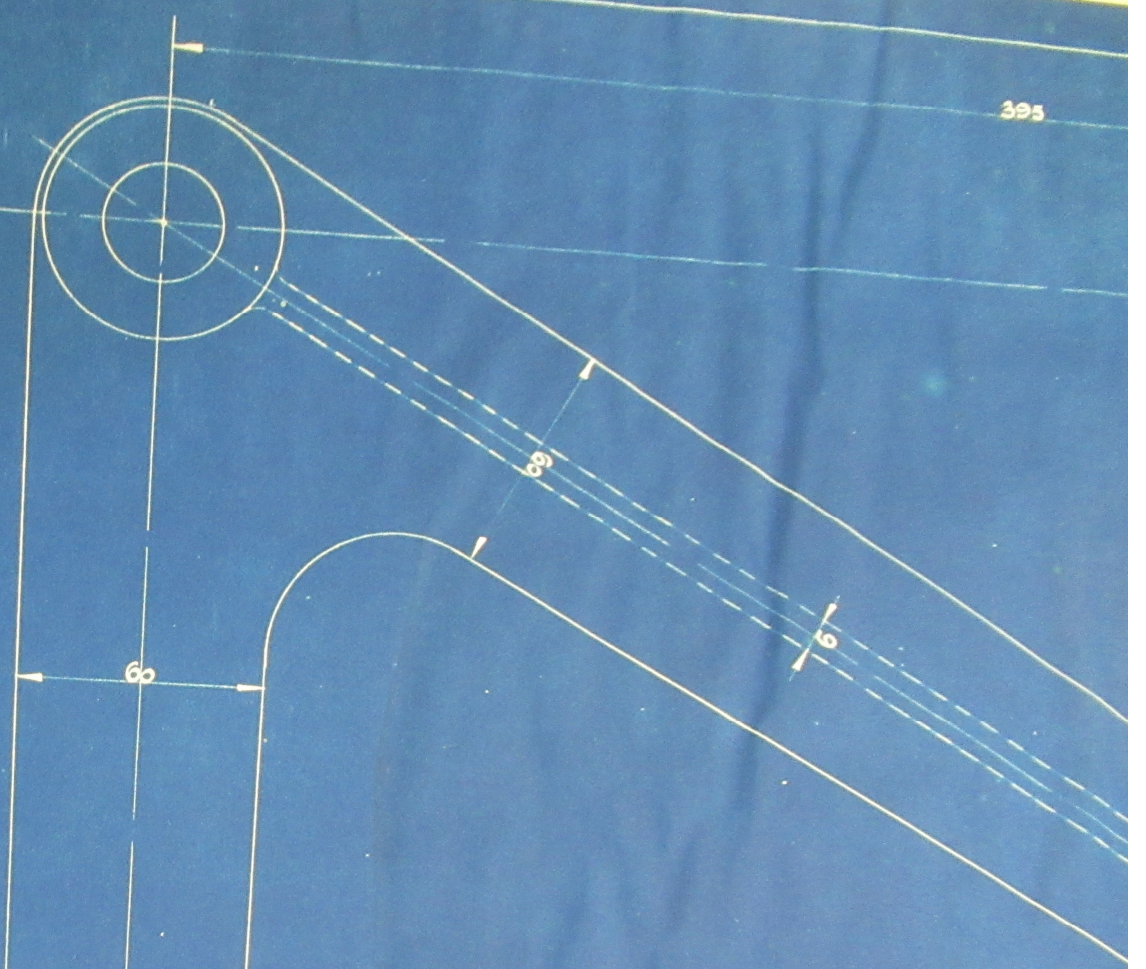
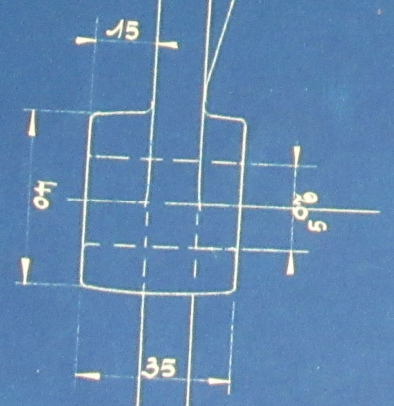
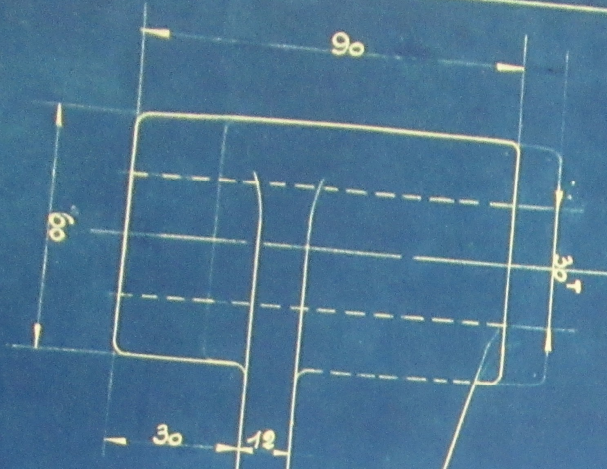


Quantité	Libellé	Designation	Mat.	Observations
2	L	Bâges d'arrêt	A.B.	
1	K	Tourillons	"	
2	I	Fourlements SKF	Mat. commande	
1	H	Couvercle	A.B.	
1	G	"	"	
1	F	Arrière	"	
1	E	Embroche	"	
1	D	Axe	"	
1	C	Galopin	ED.	
1	B	Support	"	
1	A	Levier	"	

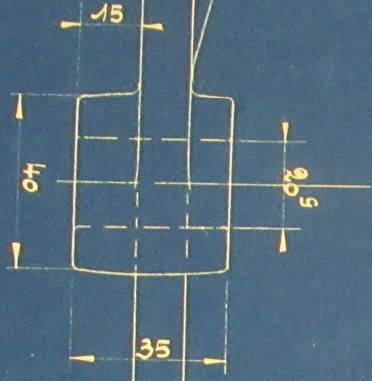
Mod. Révisé	Mod. Révisé	Designation	Mat.	Observations
		DOLLFUS MIEG & Co	Société Anonyme	
		Finissage de Belfort.	Dessiné par	
		Commande par envoi	Daté: 24-11-30	
		d'une machine à vapeur	Dessiné:	
Lentille: 4/4			N° 24693	





7

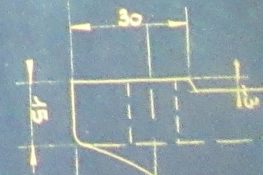
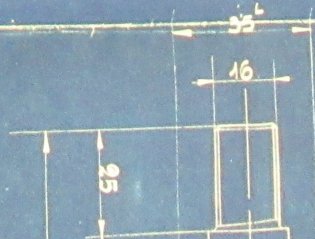
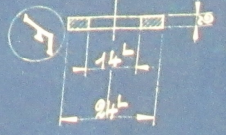
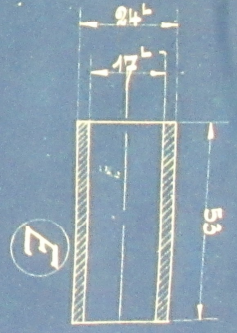
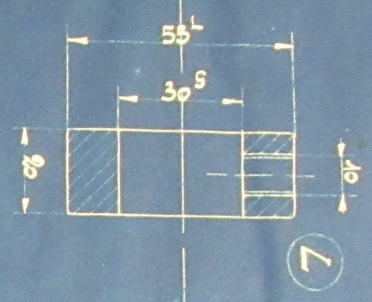


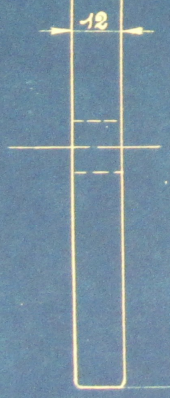
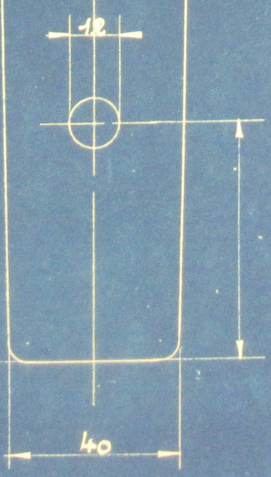
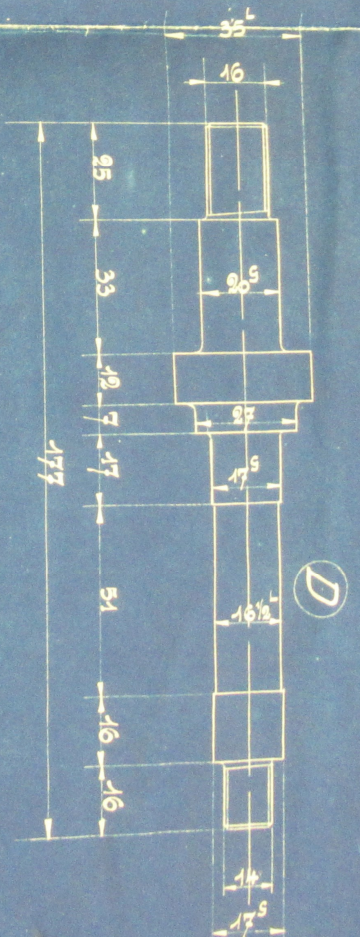
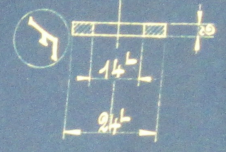
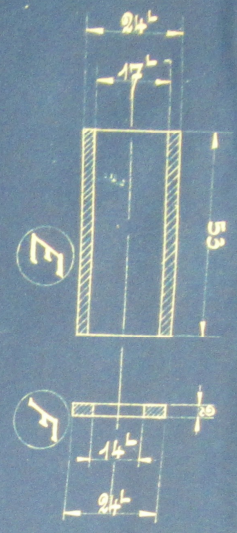
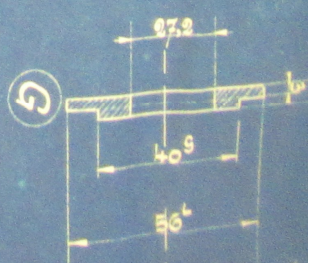
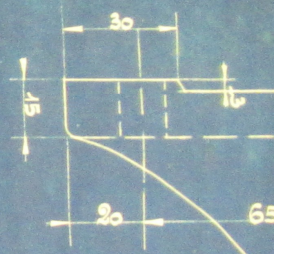
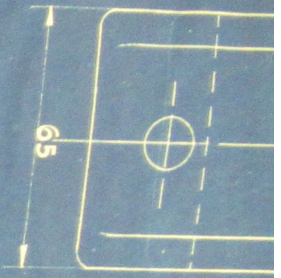


600

A

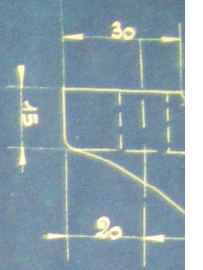
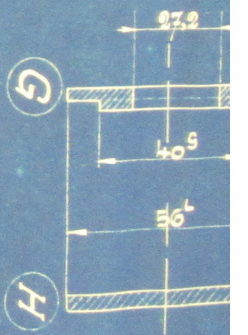
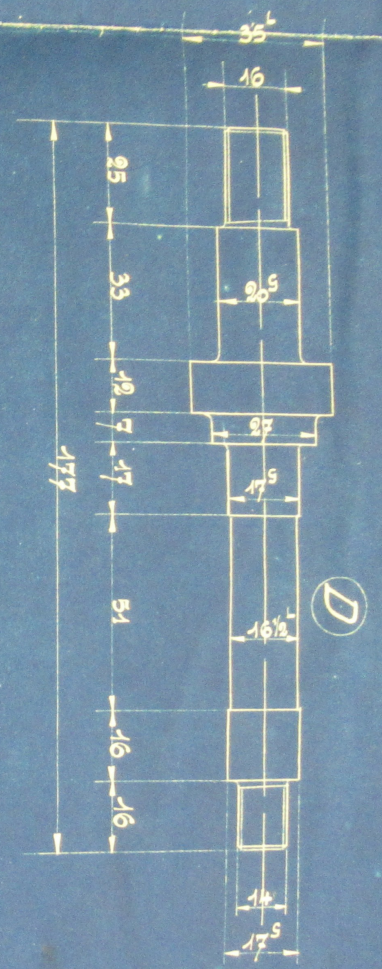
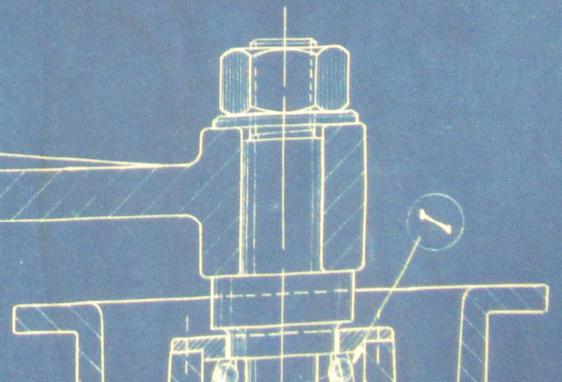
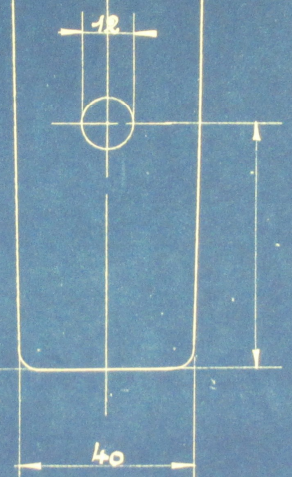
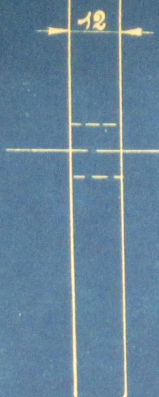
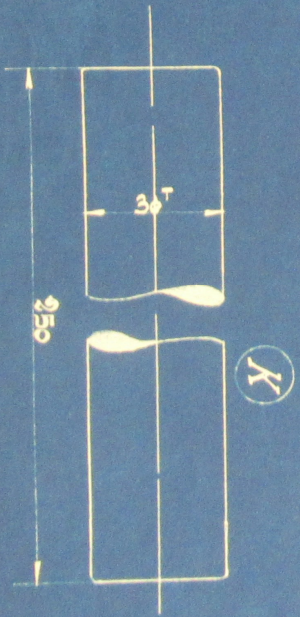
60





H

600



6

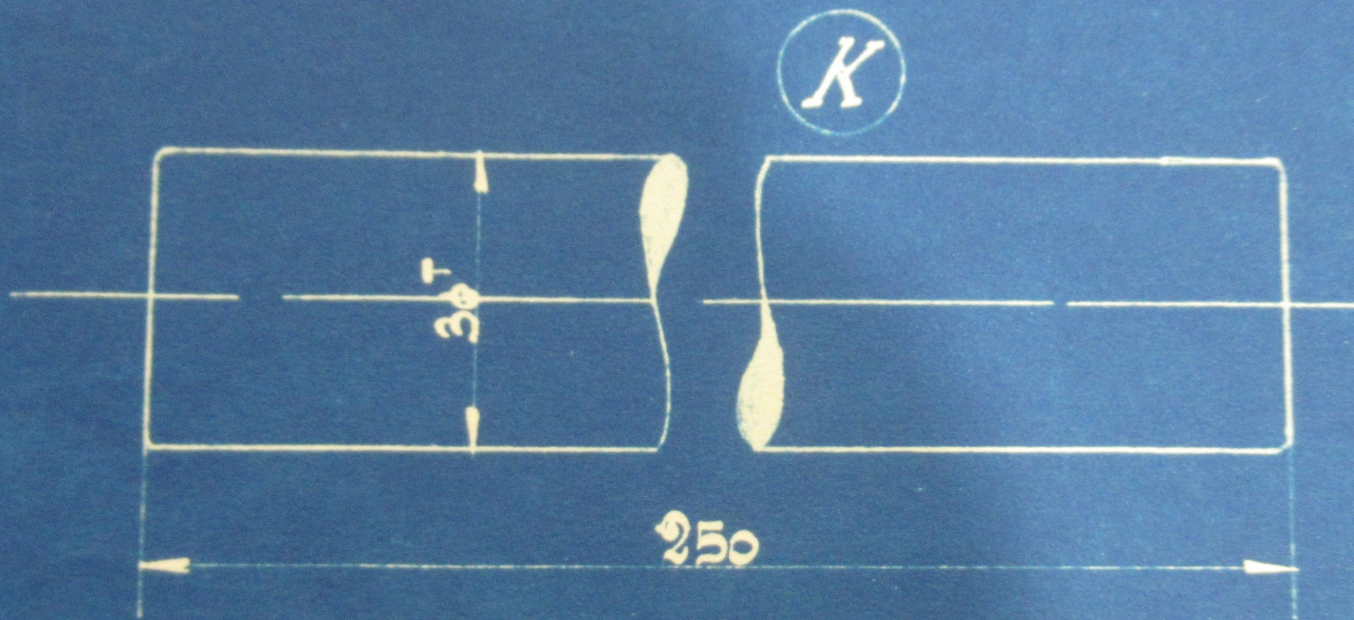
D

K

I

G

H



	1	F	
	1	E	
	1	D	
	1	C	
	1	B	
	1	A	
Nombre	Nombre	Pcs.	
			Compte
			Date



Pos.	Mod. N°	Designation	Mat. Observation
A		Levier	"
B		Support	"
C		Galopin	FD.
D		Axe	"
E		Entretoise	"
F		Rondelle	"
G		"	"
H		Couverde	A.B.
I		"	"
J		Roulements 5KR 2203 à commander	"
K		Tourillons	"
L		Bâgues d'arrêt	A.B.

DOLLFUS MIEG & Co, Société Anonyme

Finissage de Belfort.

Commande par enrouleur  
d'une machine à gazer.

Date: 1/4.

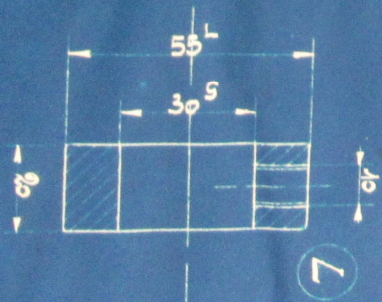
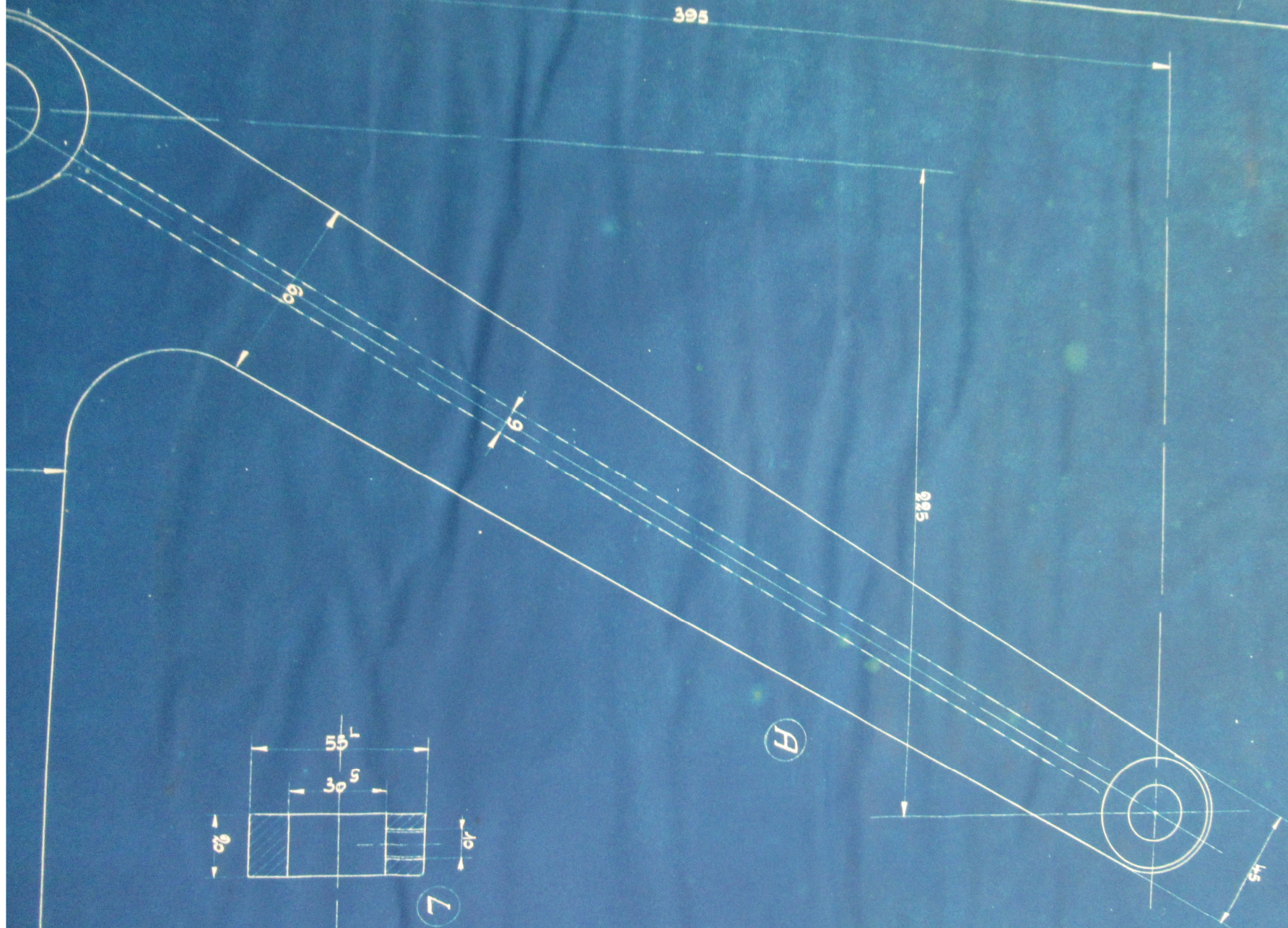
N° 24693

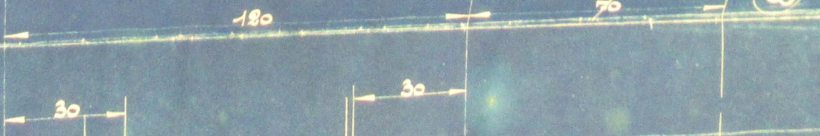
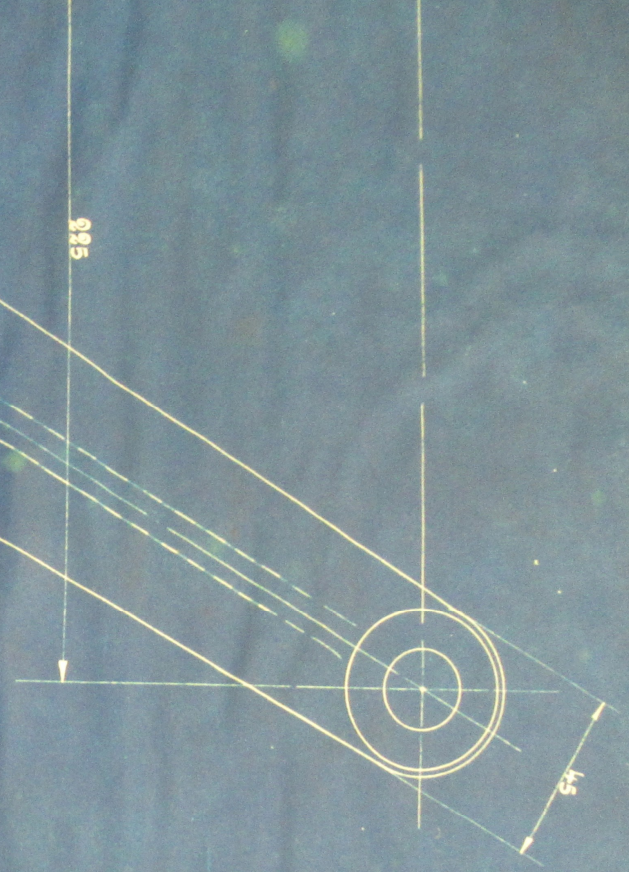
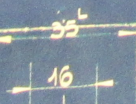
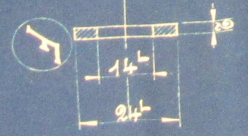
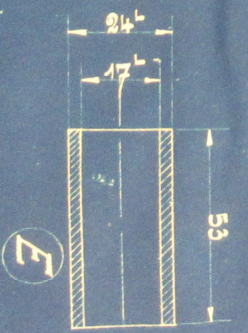
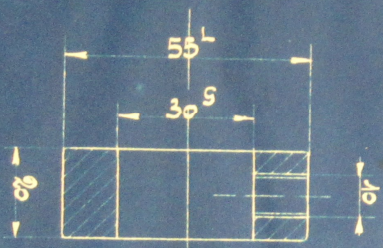
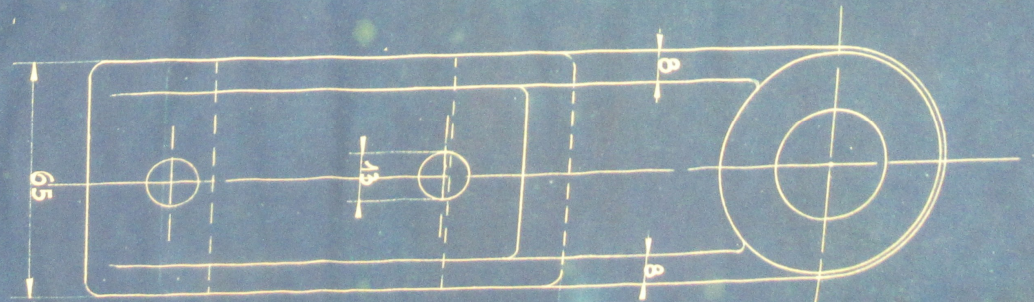
Déposé par  
Date: 22-VII-30

Dossier :

2

395





60

A

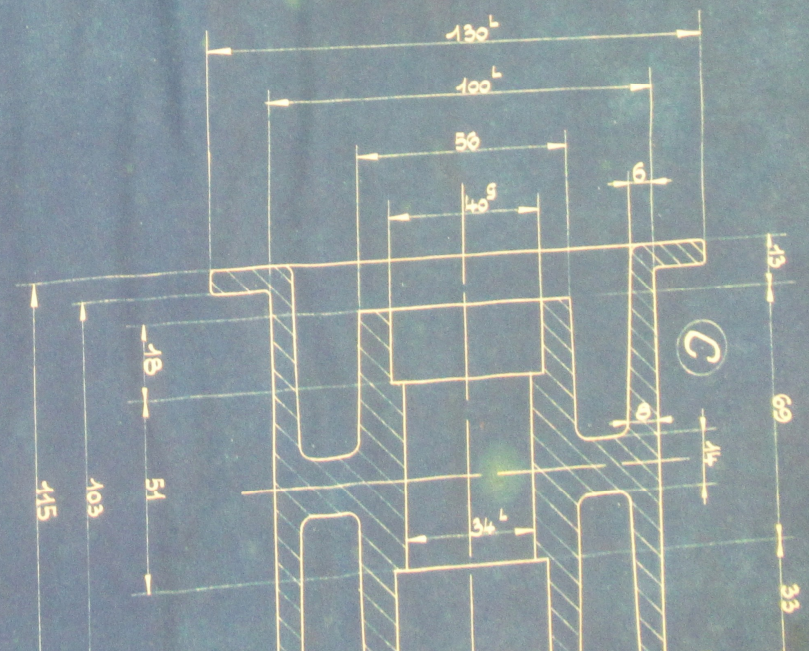
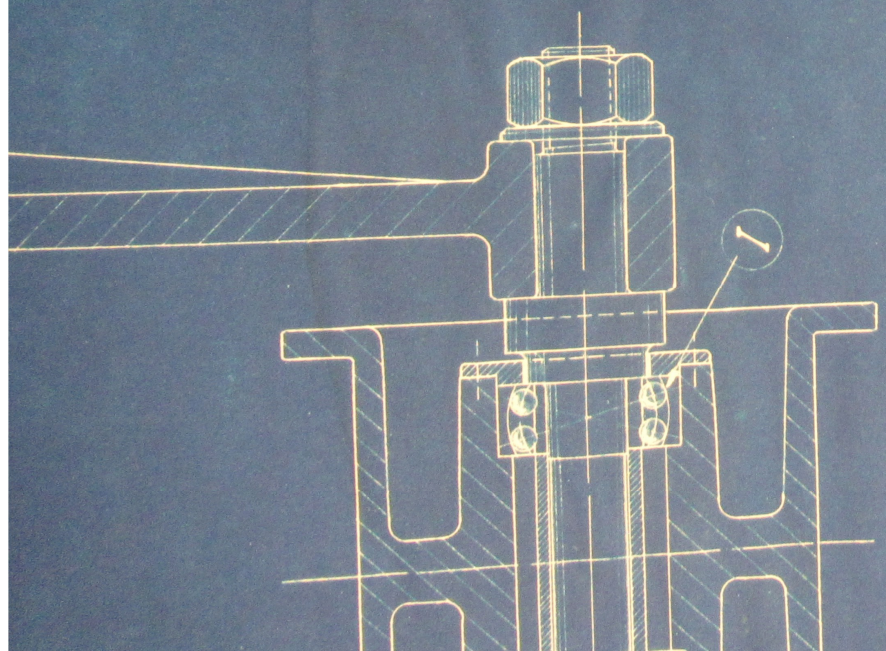
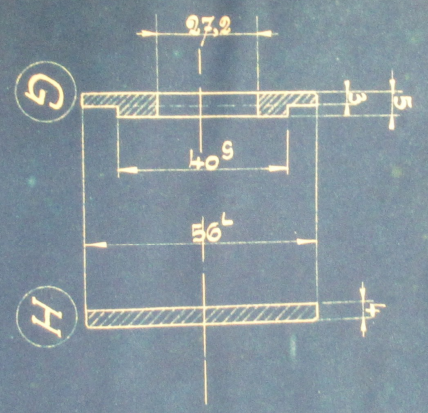
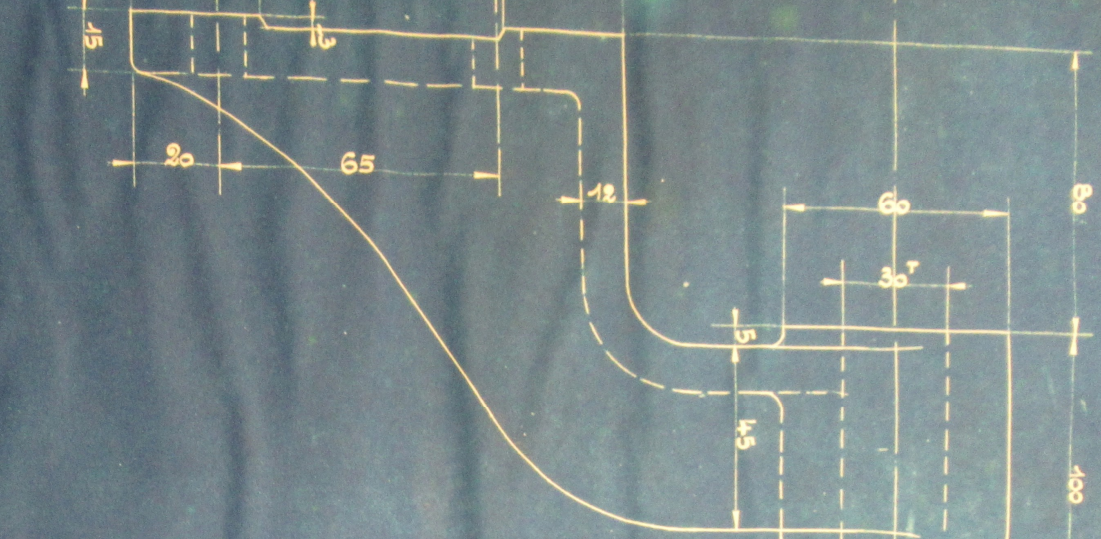
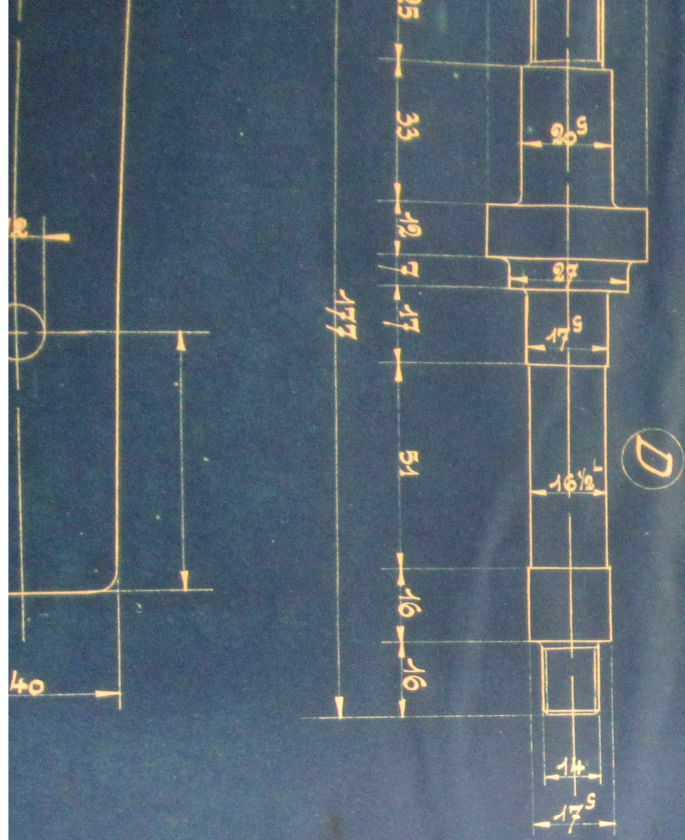
L

E

F

B





14<sup>S</sup>  
17<sup>S</sup>

40<sup>S</sup>  
56<sup>L</sup>  
4  
H

