

DMC-270-285

D.M.C

PLANS D'ENSEMBLE DES ATELIERS

Année 1933

MULHOUSE	Filature à rez-de-chaussée Filature I Bâtiment à étages Filature II Filature II Mélange, battage et magasin de coton
BELFORT	Filature

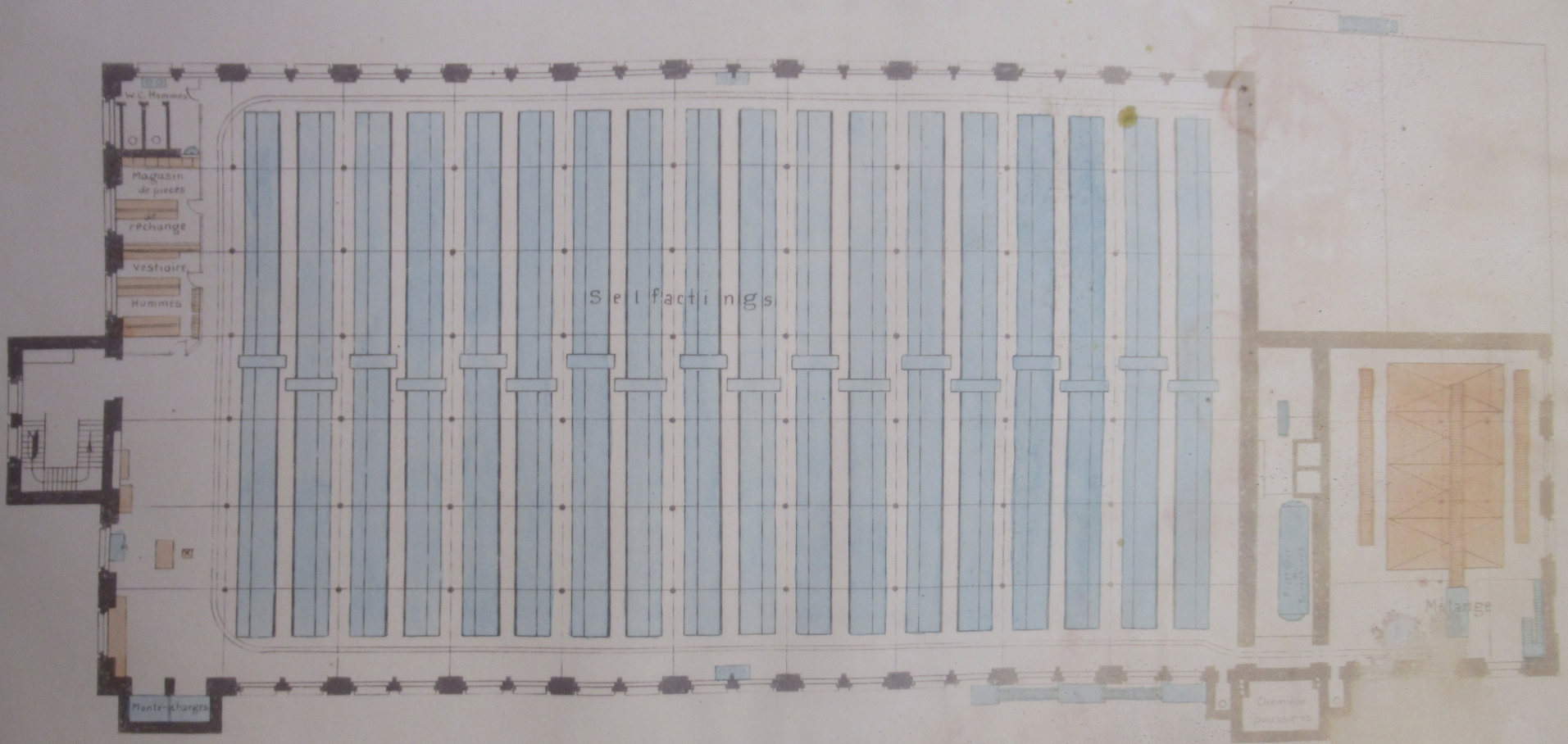
Portefeuille N° 23

n° d'ordre	n° du plan	Désignation
1	-	Silature I. Bâtiment à étages.
2	18095	idem. Bâtiment à rez-de-chaussée.
3	-	Silature II. Ensemble.
4	19260	idem. Battage et Mélange.
5	18837	Silature Belfort. Ensemble.
6	17520	idem. Sous-sol.
7	17435	idem. Rez-de-chaussée.
8	17509	idem. 1 ^{er} étage.
9	17510	idem. 2 ^{me} étage.
10	17518	idem. 3 ^{me} étage.
11	-	idem. Façades principales.
12	17384	idem. Façades latérales.
13	-	Silature I. Agrandissement du bâtiment à rez-de-chaussée. 1903.
14	-	idem. idem.
15	2485	idem. Agrandissement du local des cardes 1910.
16	2502	idem. Agrandissement du local des bancs à broches.
17	5779	Silature Belfort. Installation pour aspirer les poussières pendant le déboufrage combinée avec la ventilation de la salle.

12 DAC 27 M

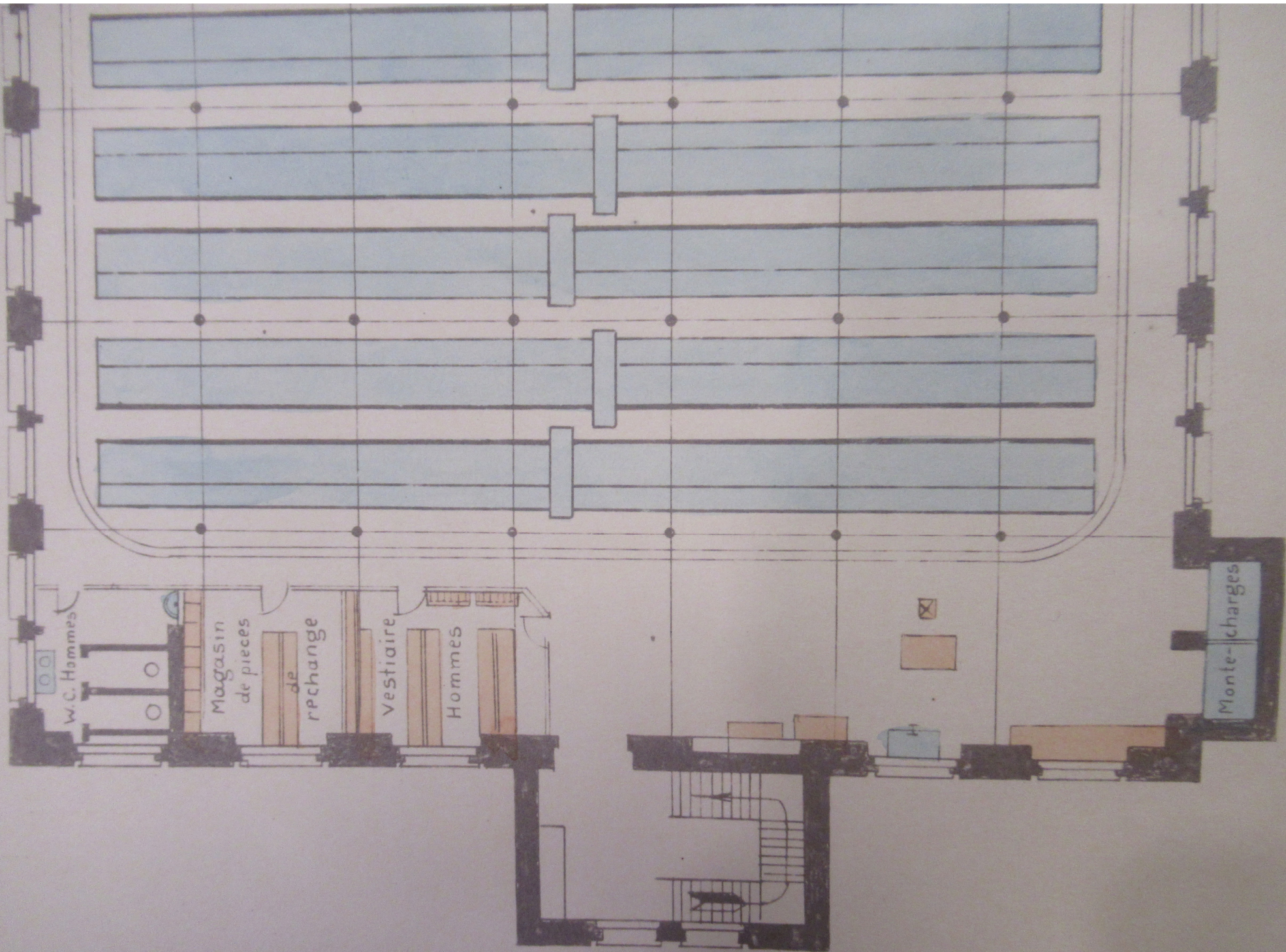
FILATURE

II^{ME} ETAGE



I^{ER} ETAGE





W.C. Hommes

Magasin
de pieces

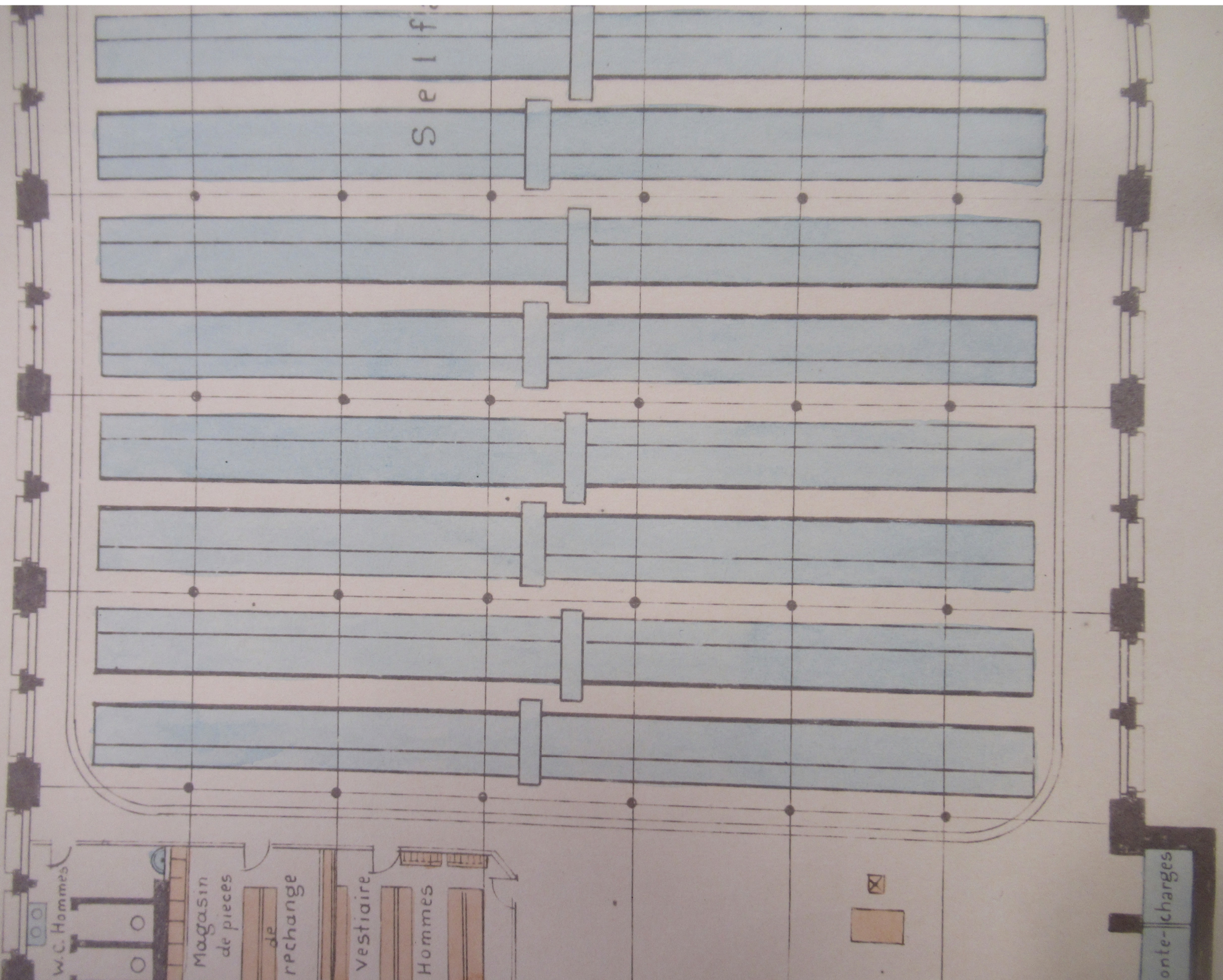
de
rechange

Vestiaire

Hommes

S e l f

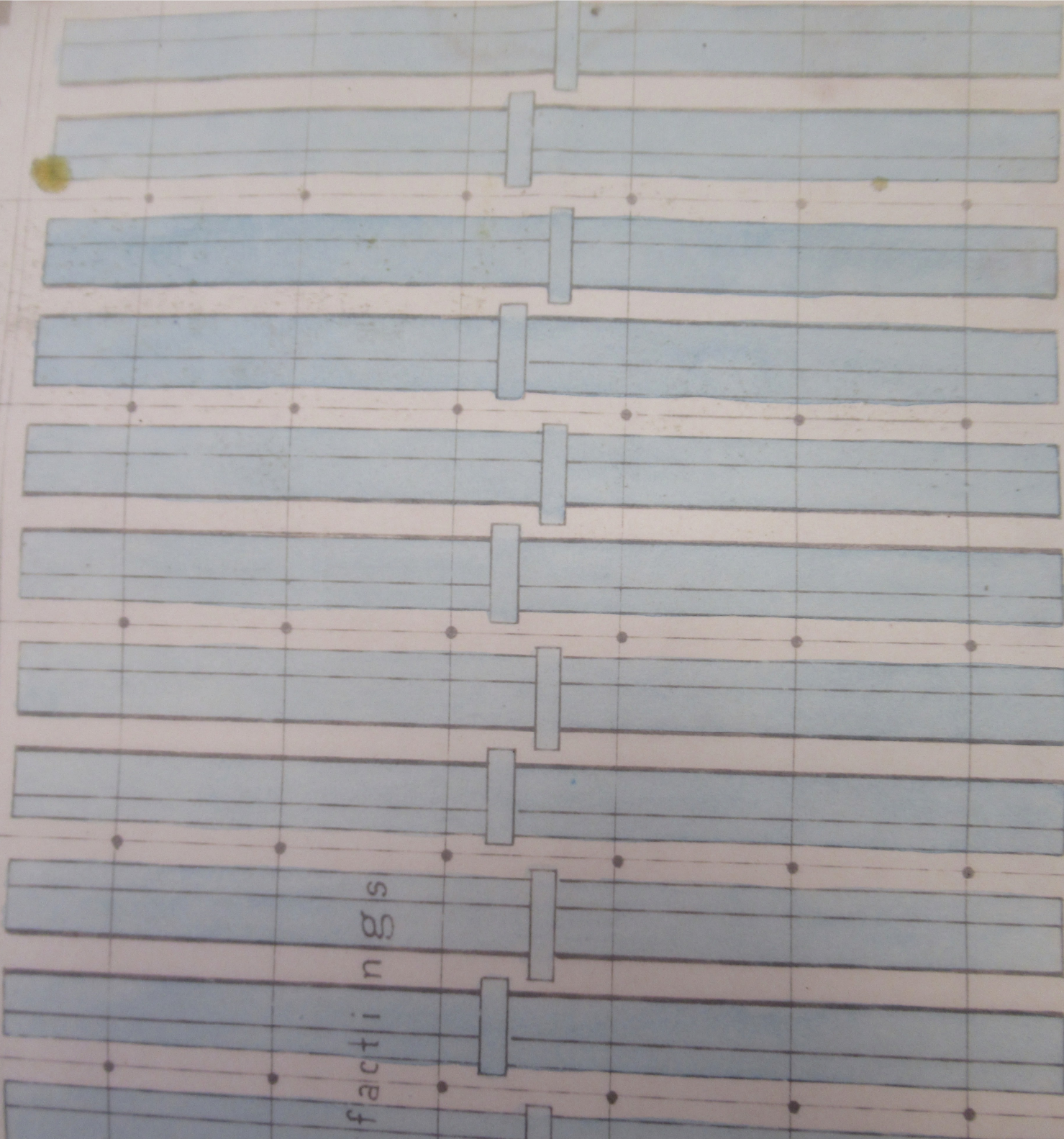
onte-
charges



S e l f a c t i n g s

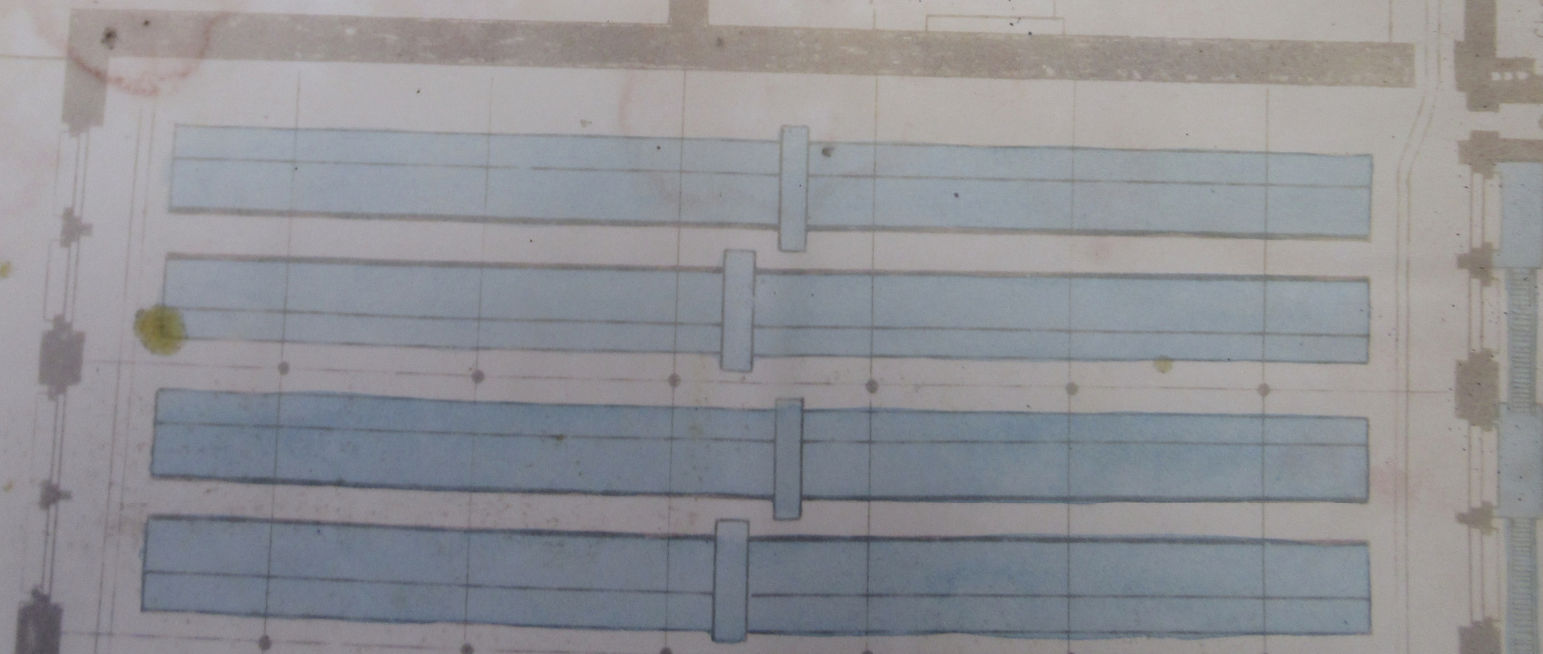
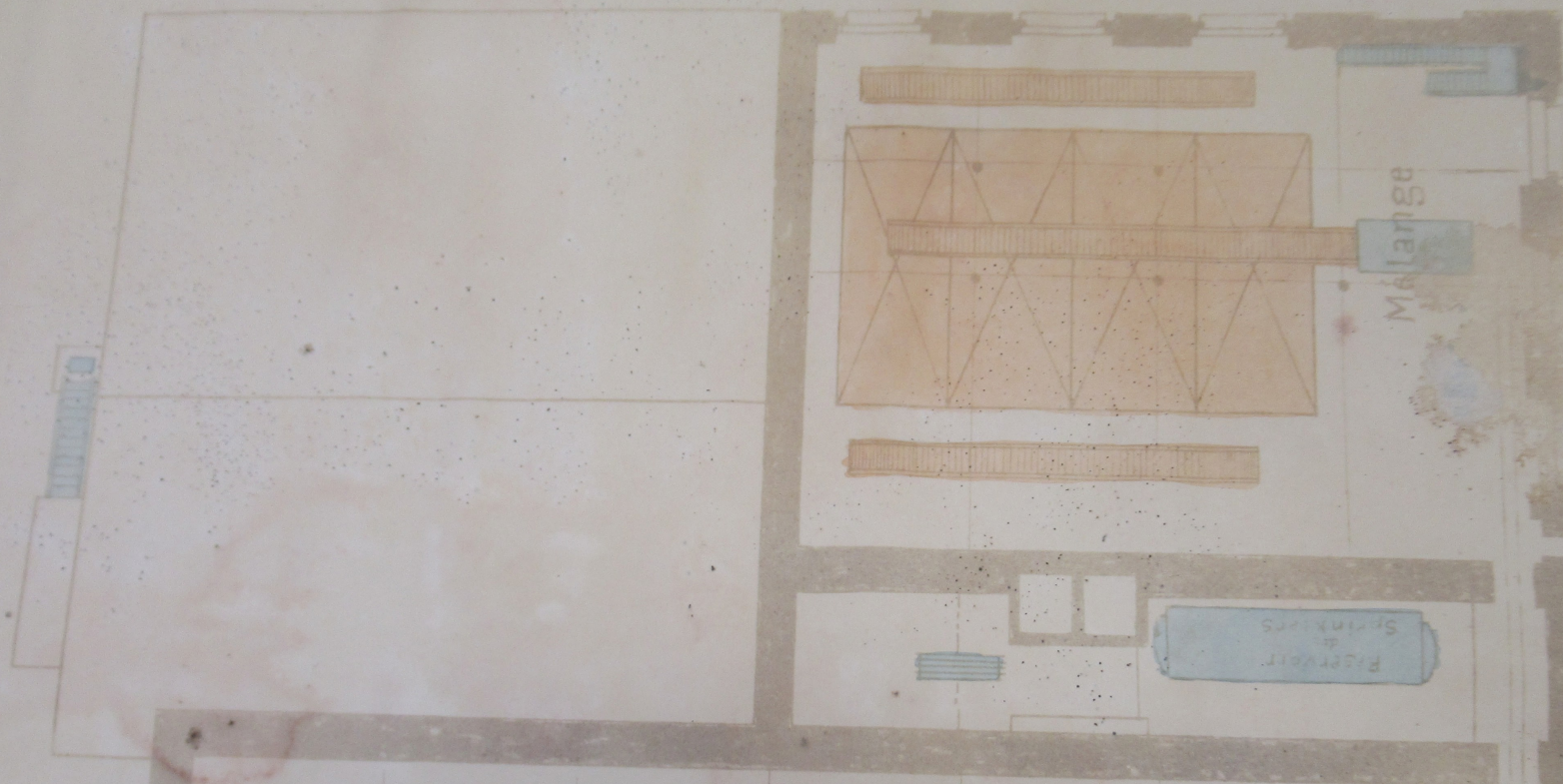
000

000



facti ngs

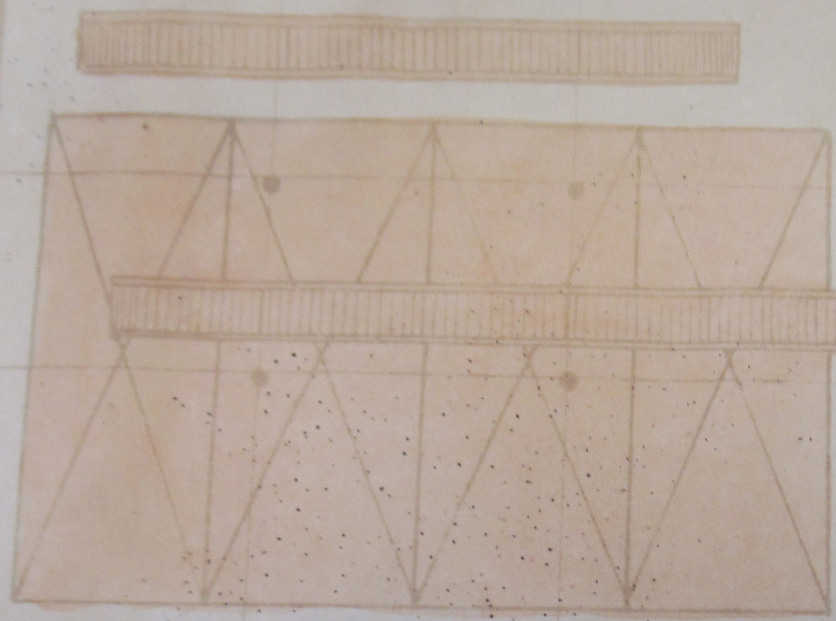
1070



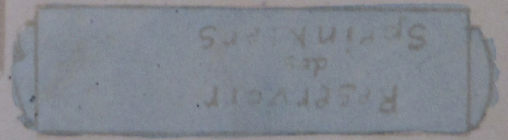
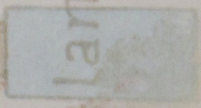
Cheminée
poussières

Filtre à
Sprinklers

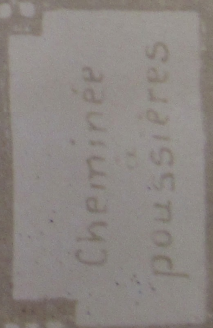
Mélange



Mélange



RESERVOIR
des
SPRINKLERS

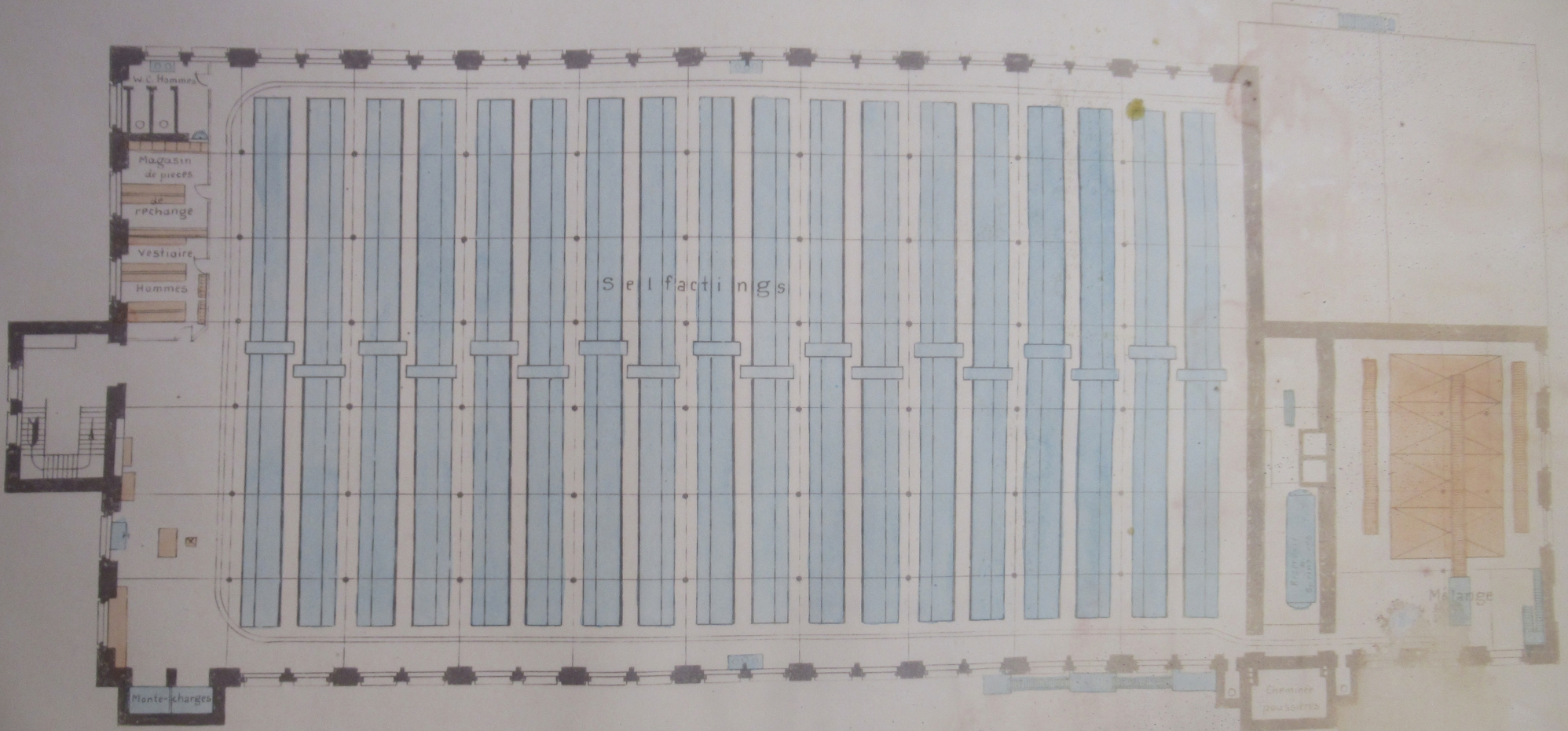


Cheminée
ou
poussières



FILATURE

II^{me} ETAGE

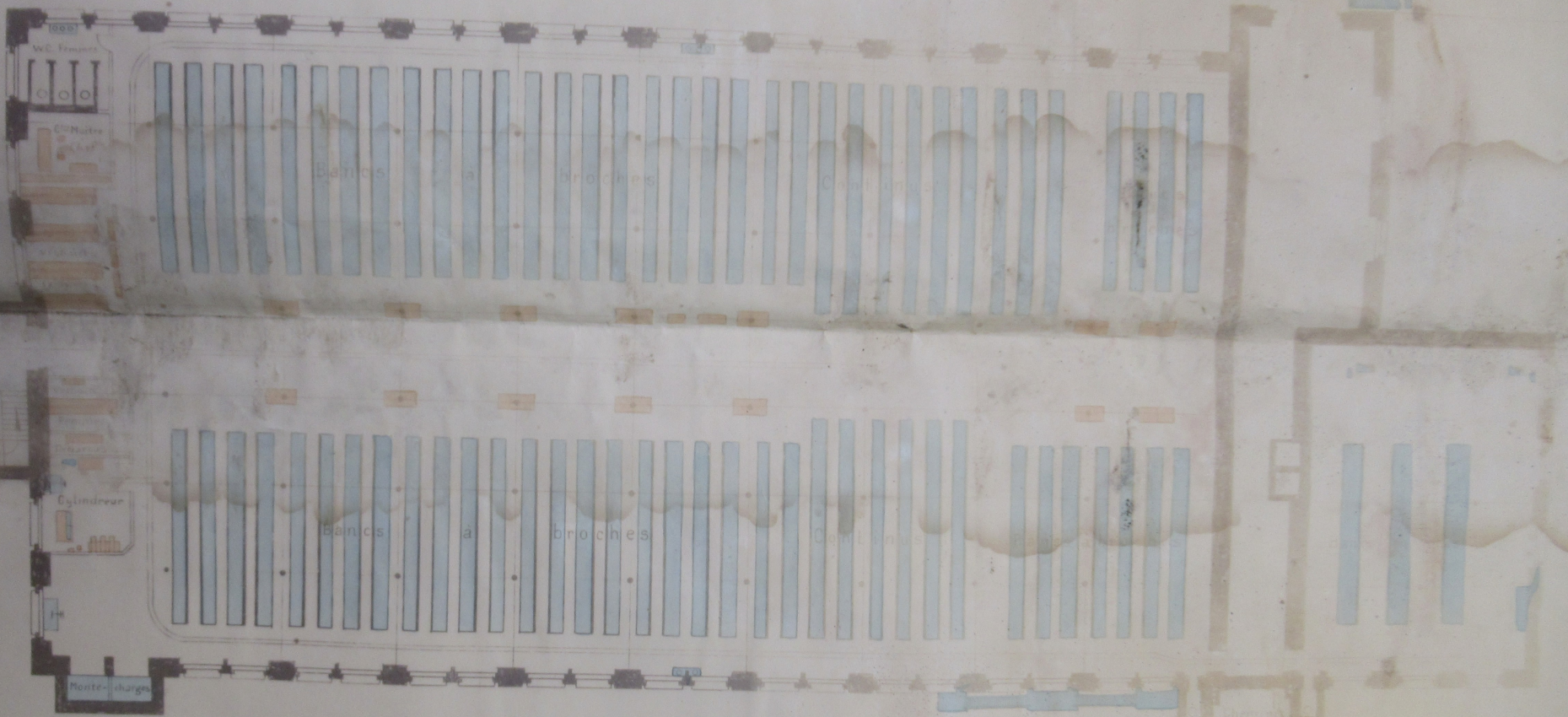


I^{er} ETAGE

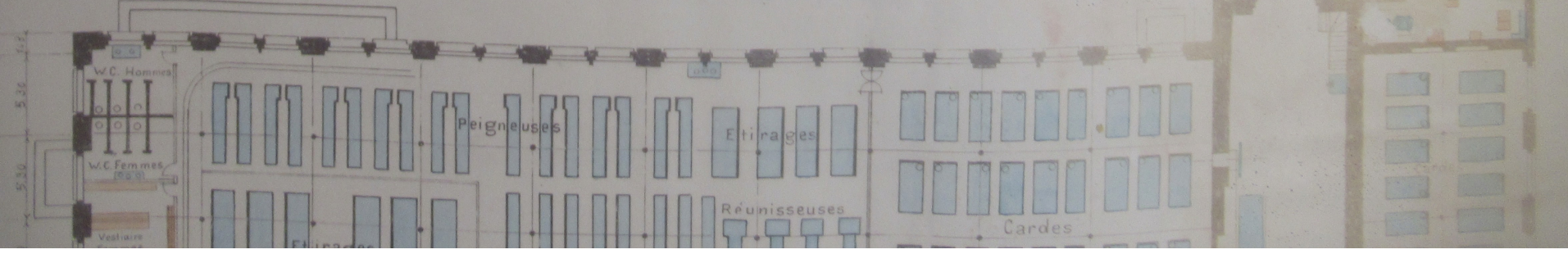




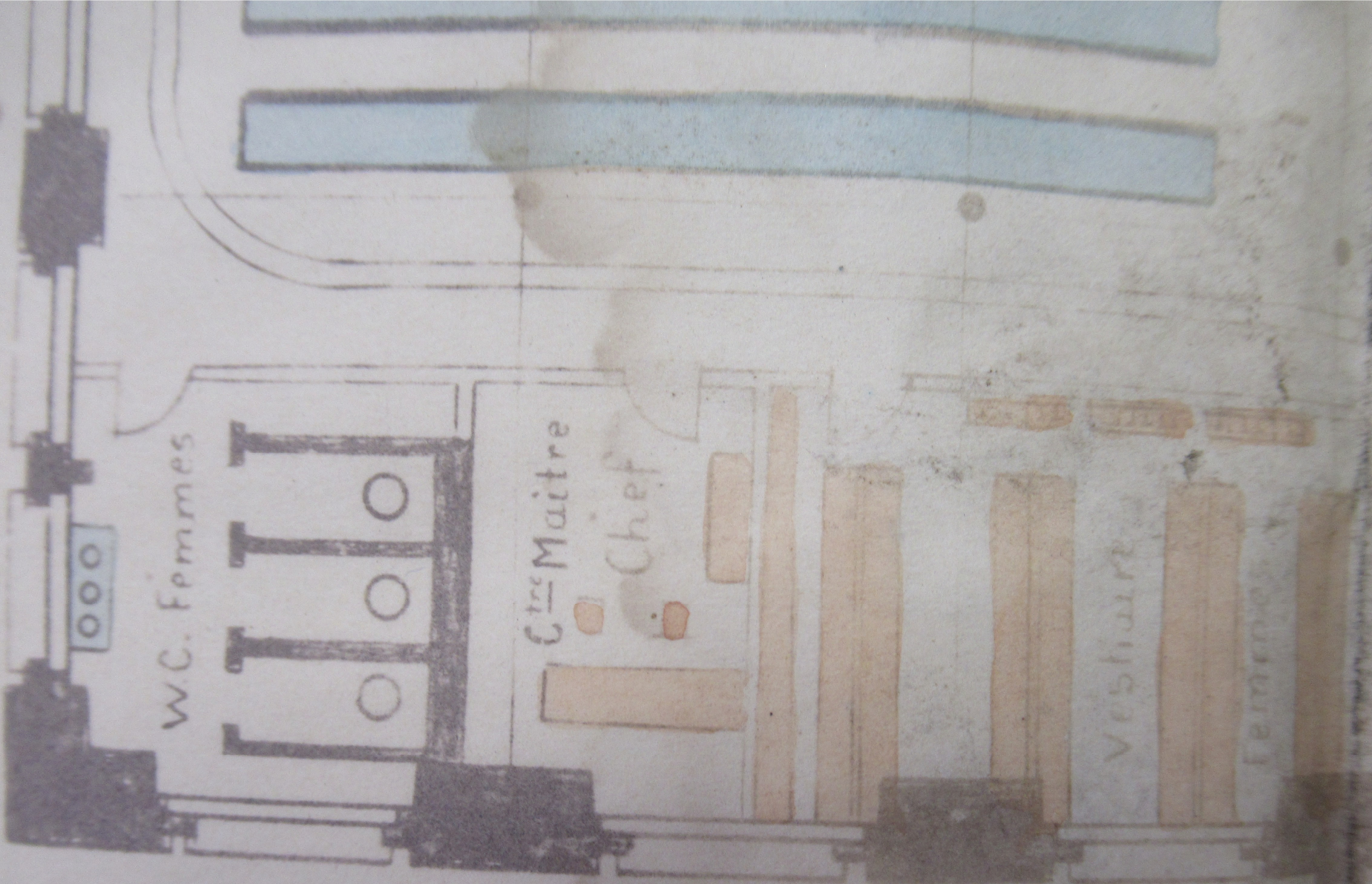
1^{er} ETAGE



REZ-DE-CHAUSSEE







000

W.C. Femmes

C^{te} Maître

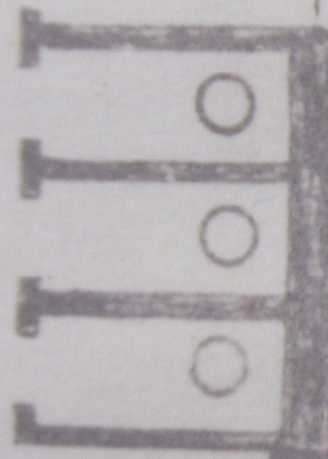
Chef

Vestiaire

Femmes

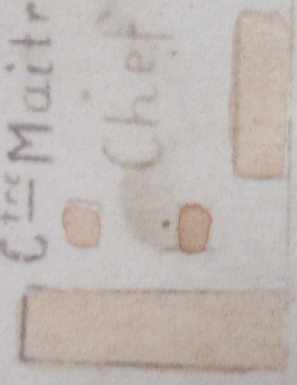
000

W.C. Femmes



C^{te} Maître

Chef



Vestiaire

Femmes



Vestiaire

Femmes

Vestiaire

Femmes

Debaras

Cylindreur







12 ETAGE

12

12

1^{er} ETAGE

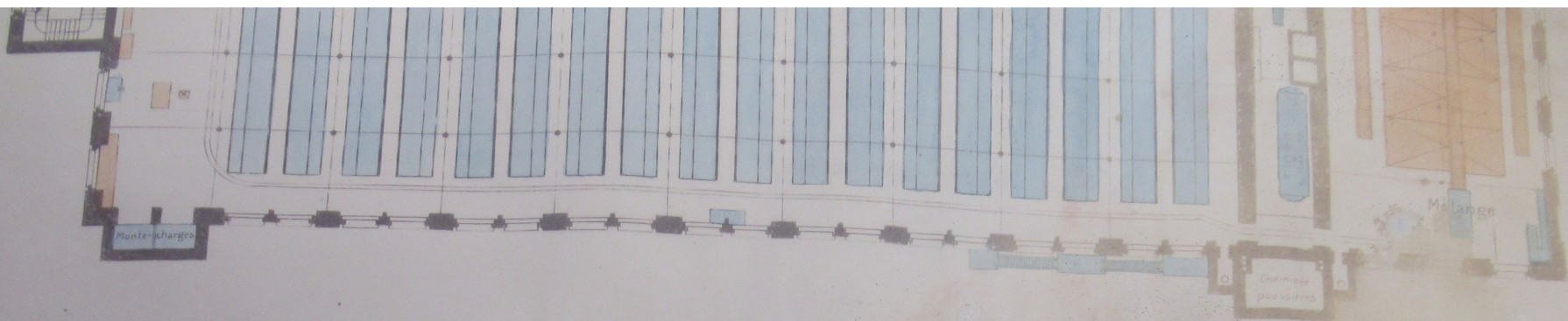


REZ-DE-CHAUSSEE

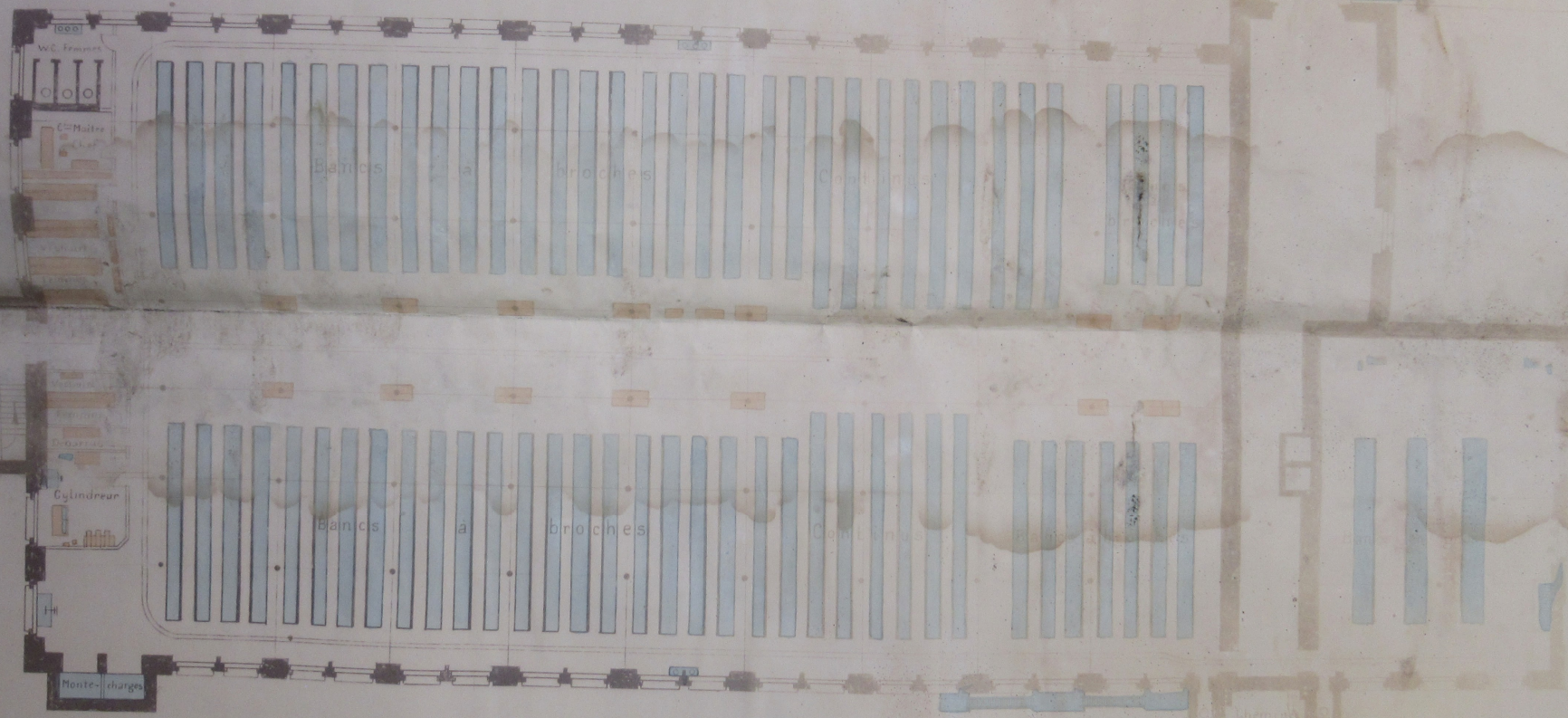




Chemical
&
Instruments



1^{er} ETAGE



REZ-DE-CHAUSSEE



39.26

10m 60

1.08 5.30 5.30 5.30 5.30 5.30 5.30 5.30 5.30 1.08

W.C. Hommes

W.C. Femmes

Vestiaire Femmes

Vestiaire Hommes

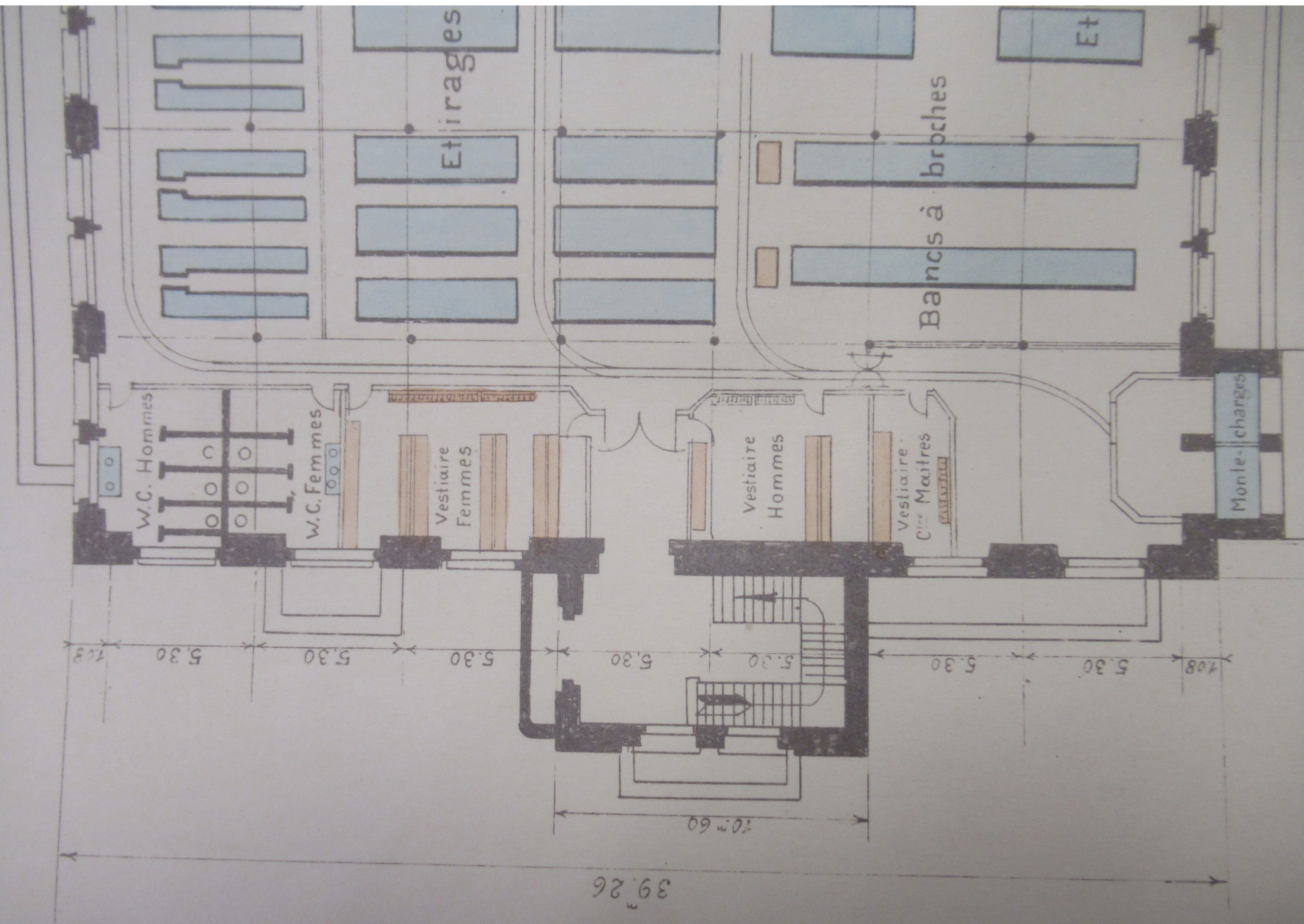
Vestiaire Citoyennes

Monte-charges

Etirages

Bancs à broches

E+

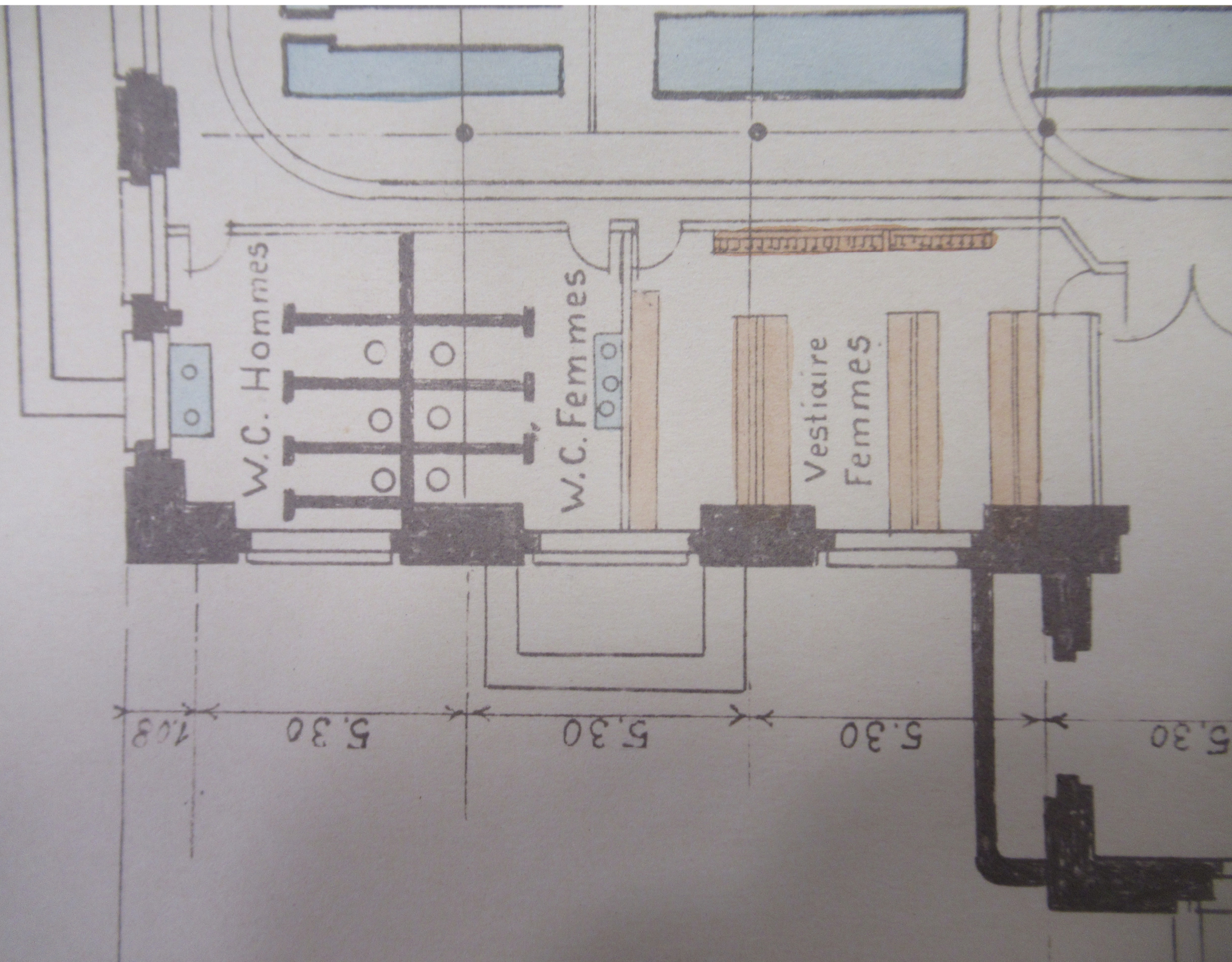


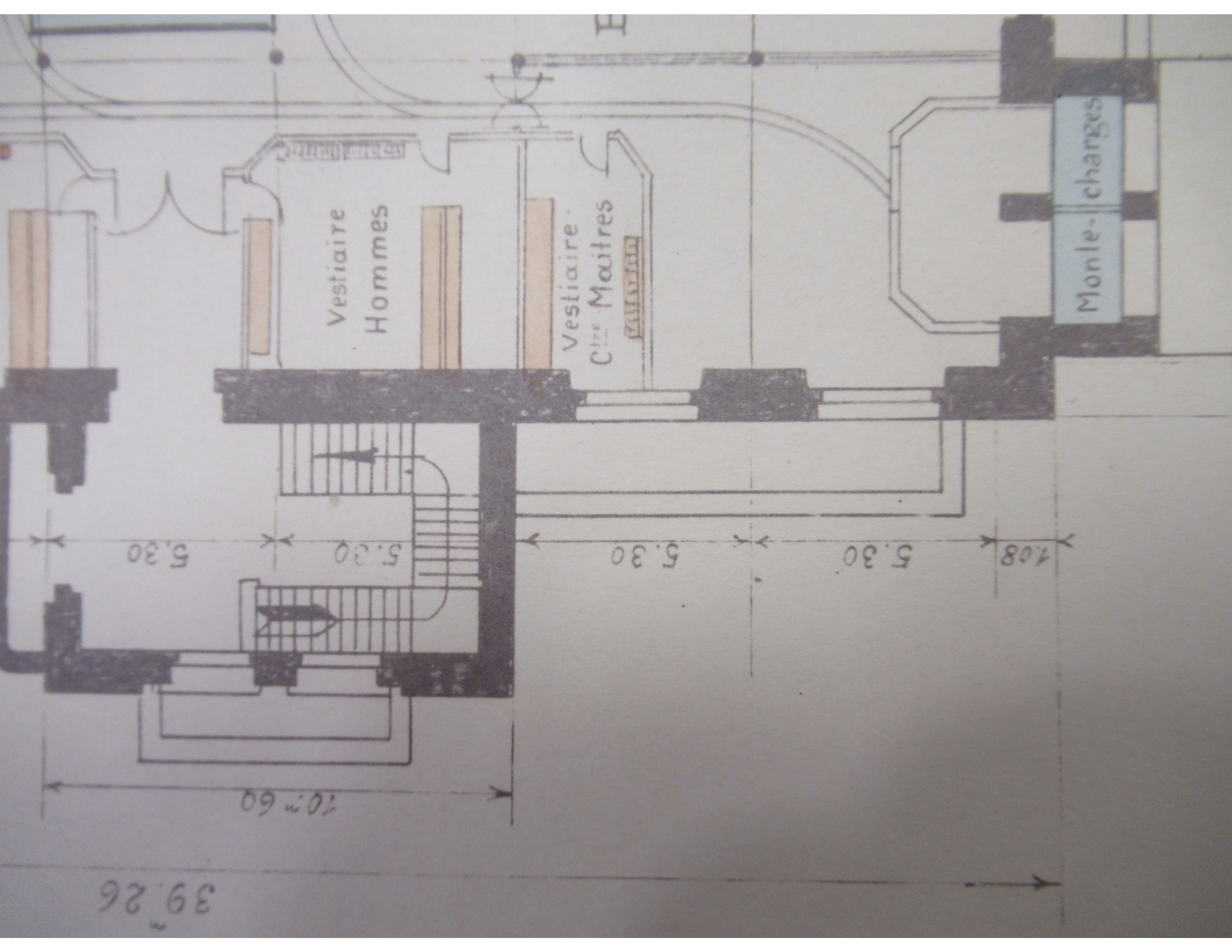
1.08 5.30 5.30 5.30 5.30

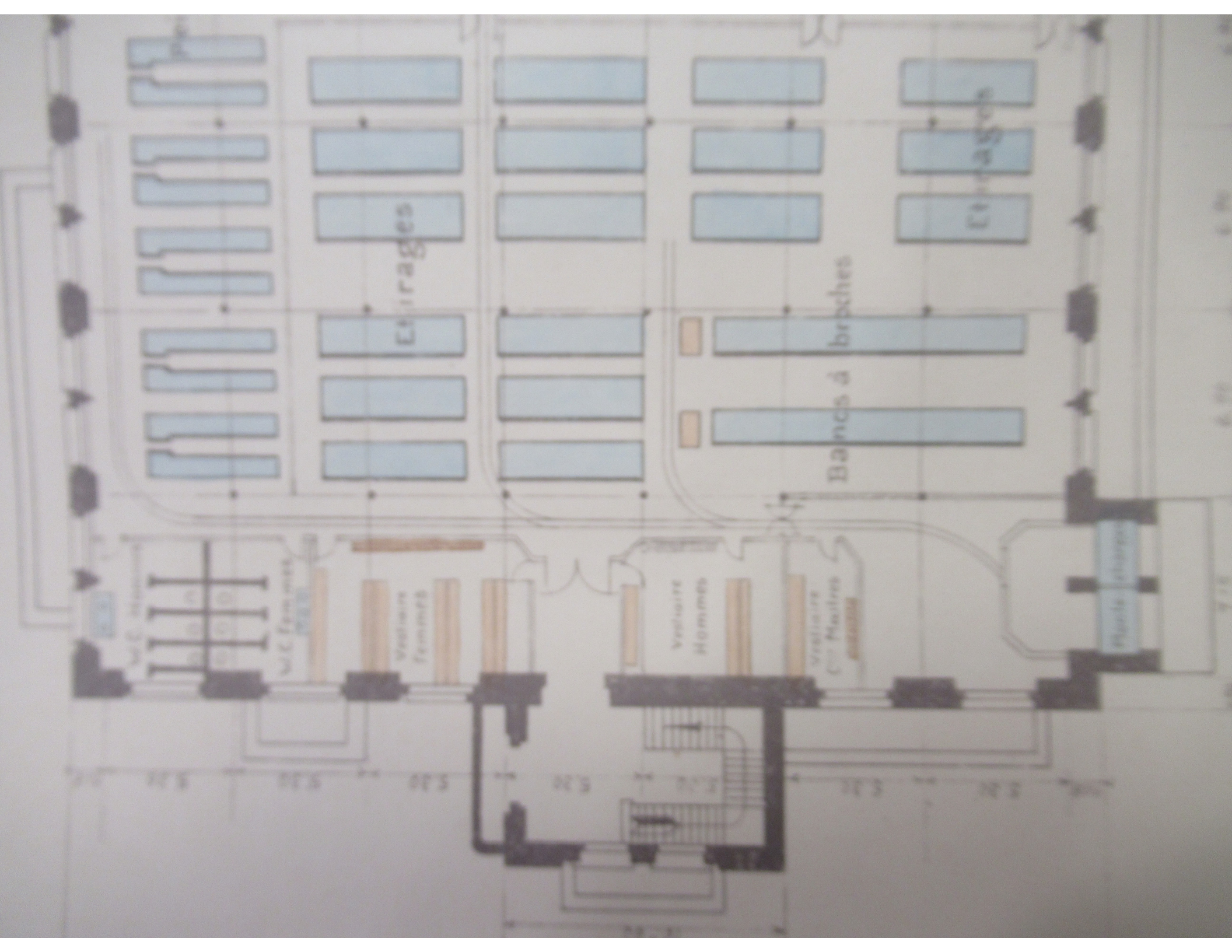
W.C. Hommes

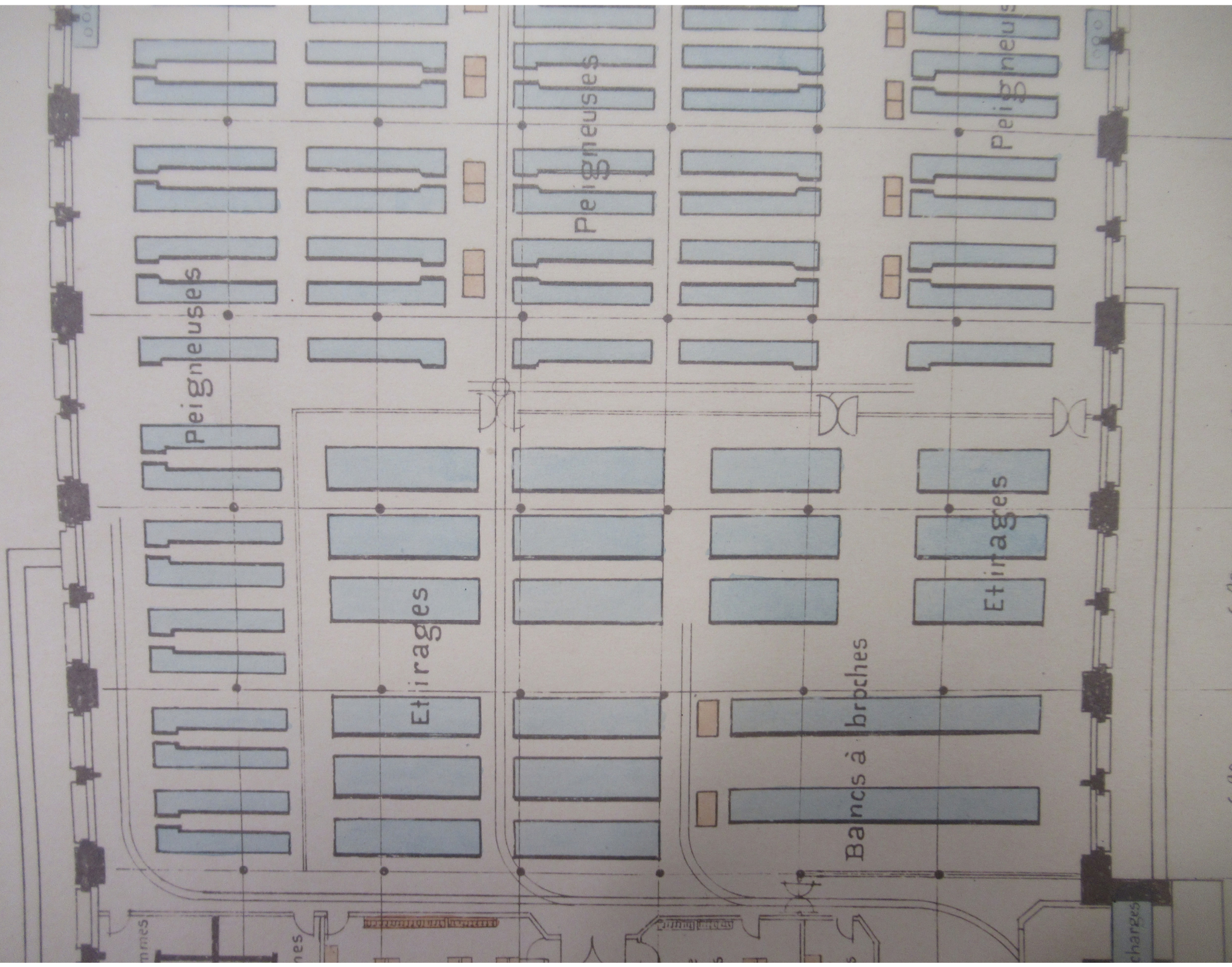
W.C. Femmes

Vestiaire Femmes









mmes

nes

XXXXXXXXXXXXXXXXXXXX

XXXXXXXXXXXXXXXXXXXX

charges

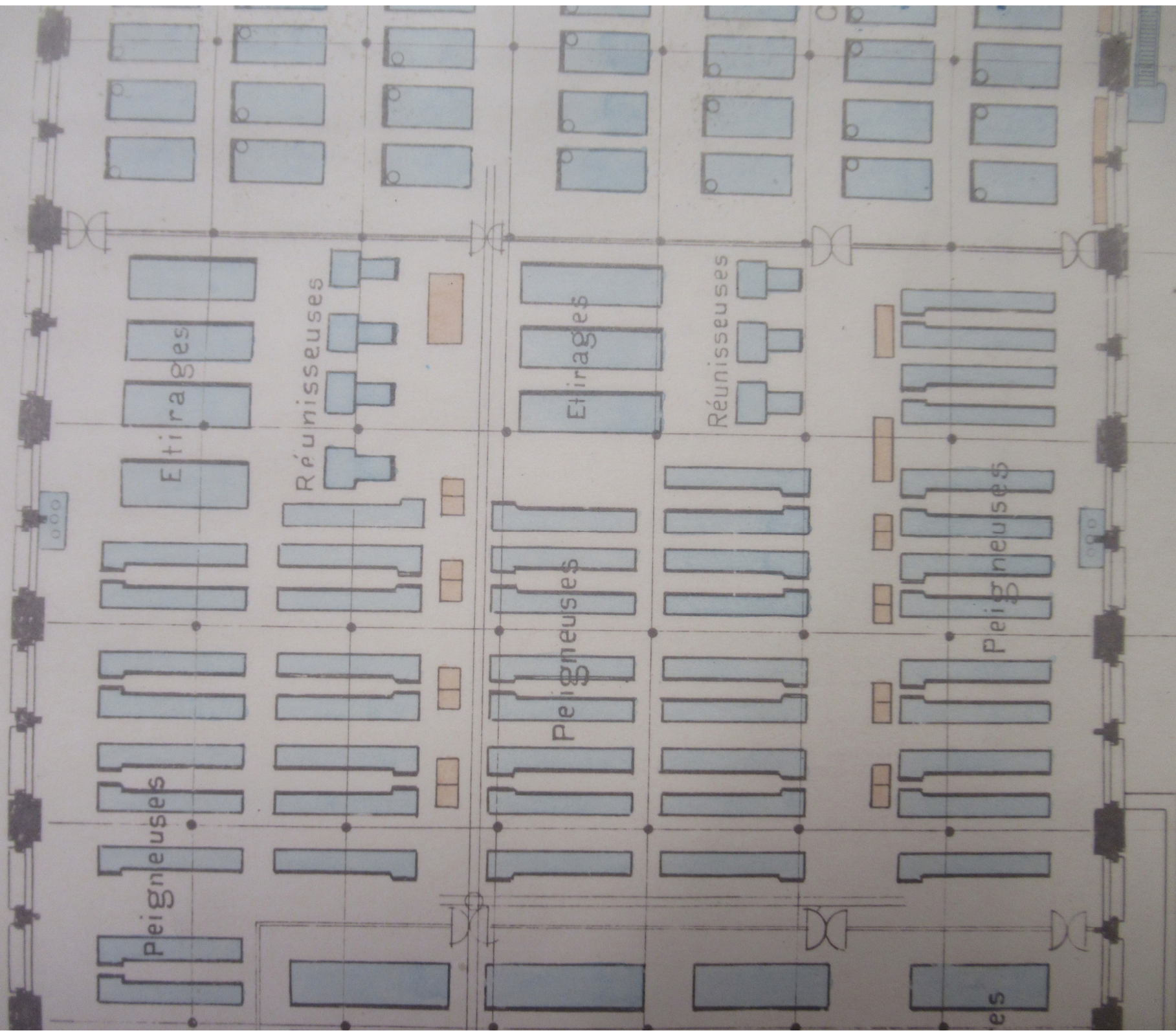
6 90

6 90

00

00

REZ-DE-CHAUSSÉE



DE CHAUSSEE

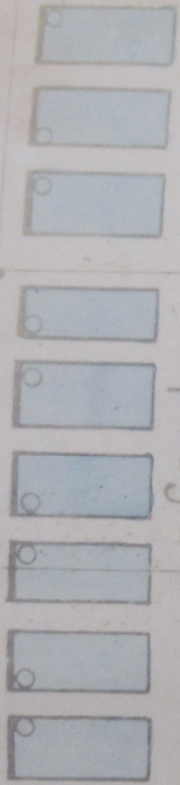
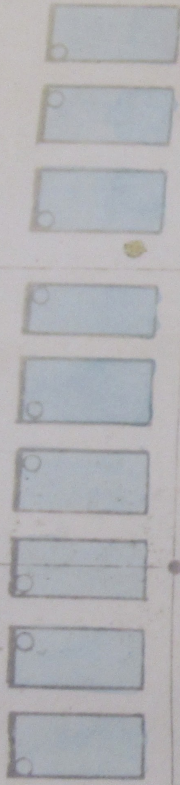
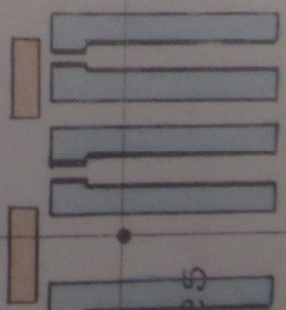
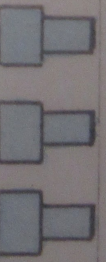
Étirages

Époussoirs

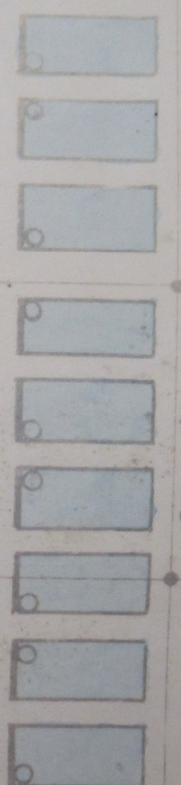
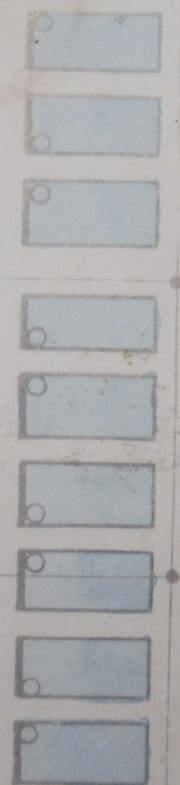
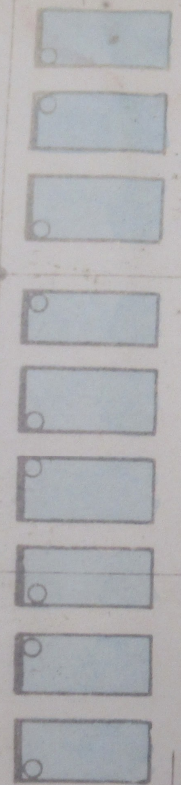


Étirages

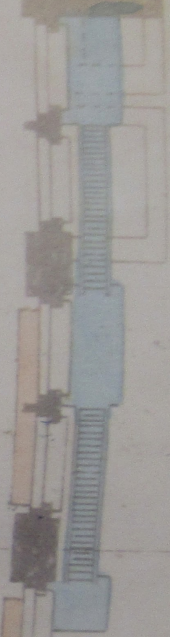
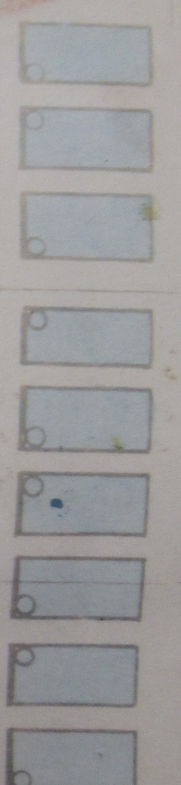
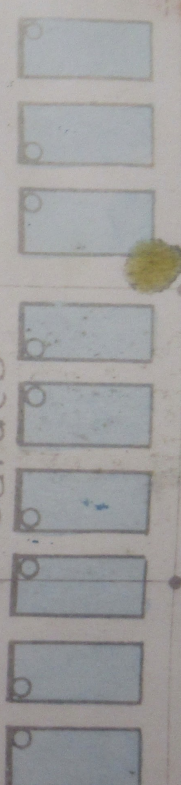
Réunissoles



Cartes



Cartes



Cheminee à poudres

6 90

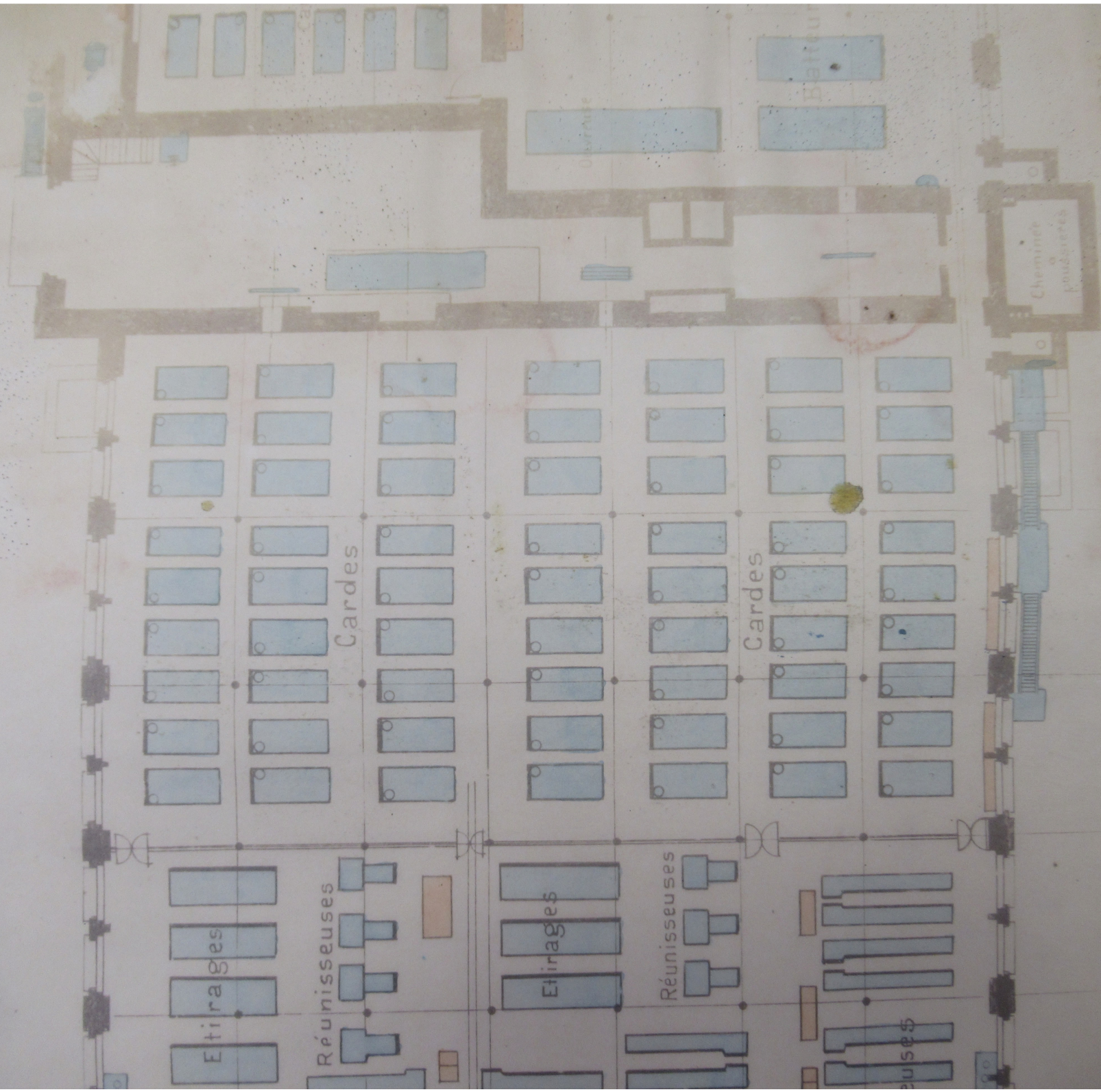
93 40

6 90

6 90

8 00

DE CHAUSSÉE



6 90

6 90

6 90

6 90

8 00

93^m 49

25-16

Etirages

Réunisseuses

Etirages

Réunisseuses

Cardes

Cardes

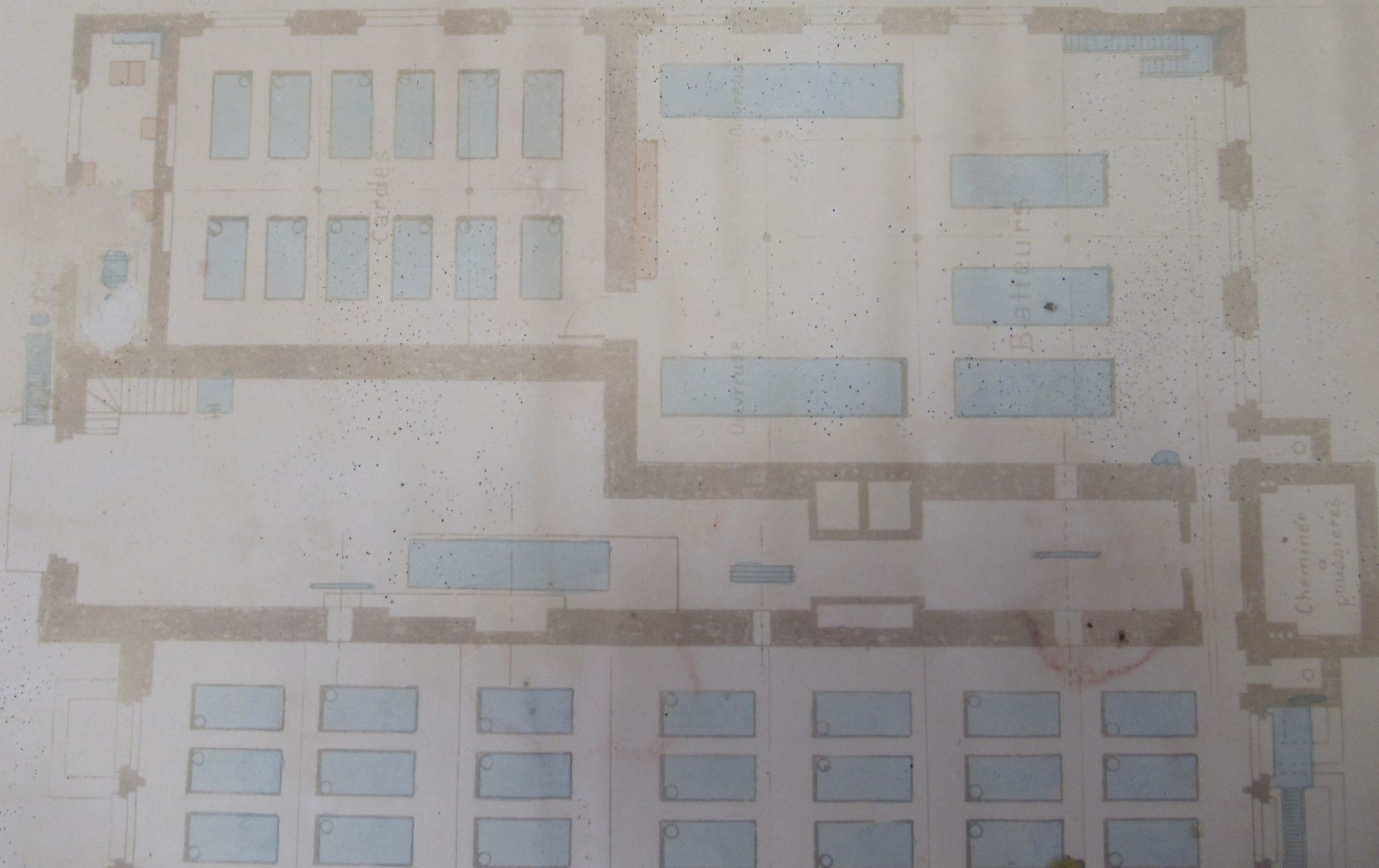
seuse

Battant

Cheminée
à
poussières

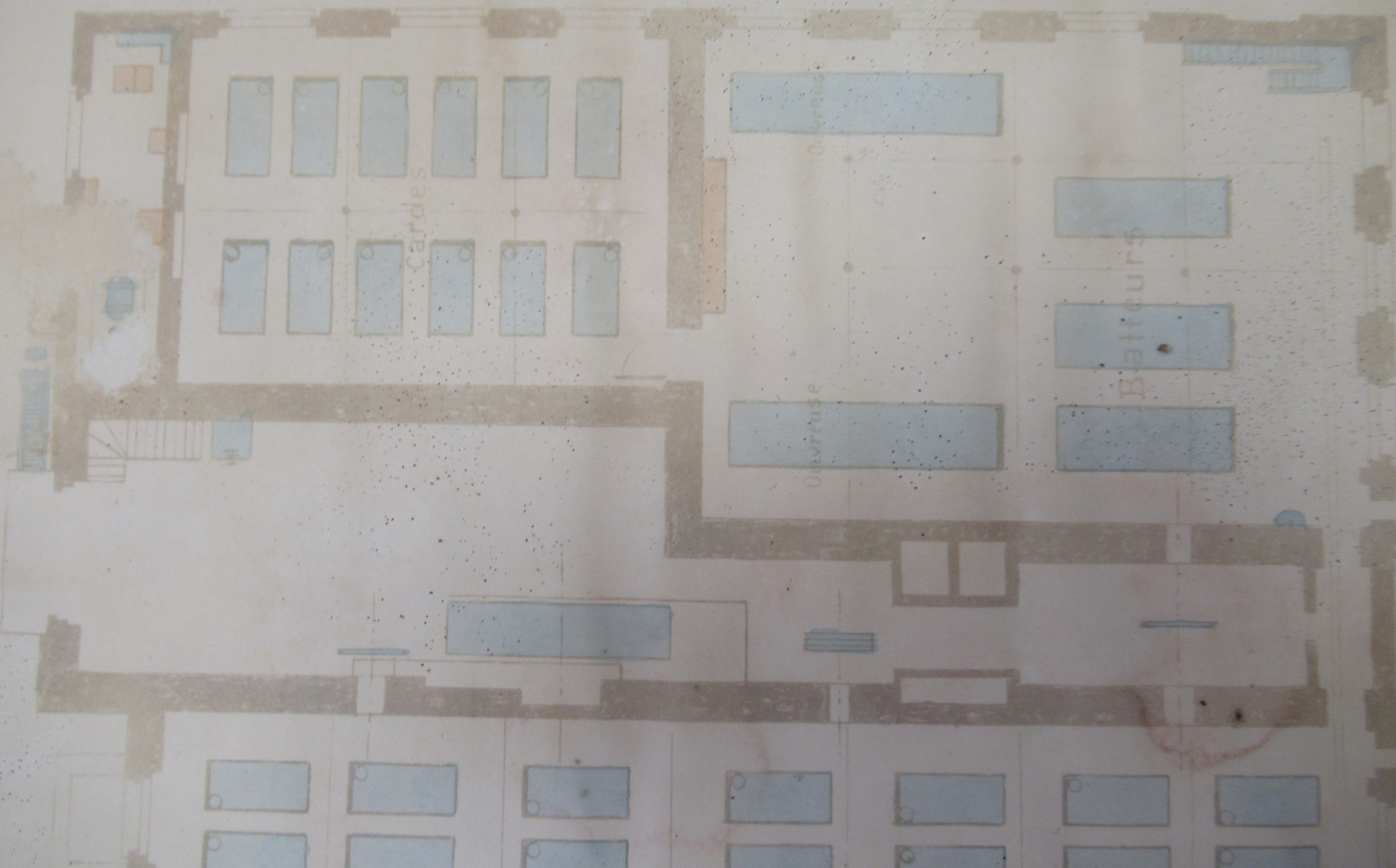
Cheminée
à
poussières

1015 S. 11th St.



28-18

000

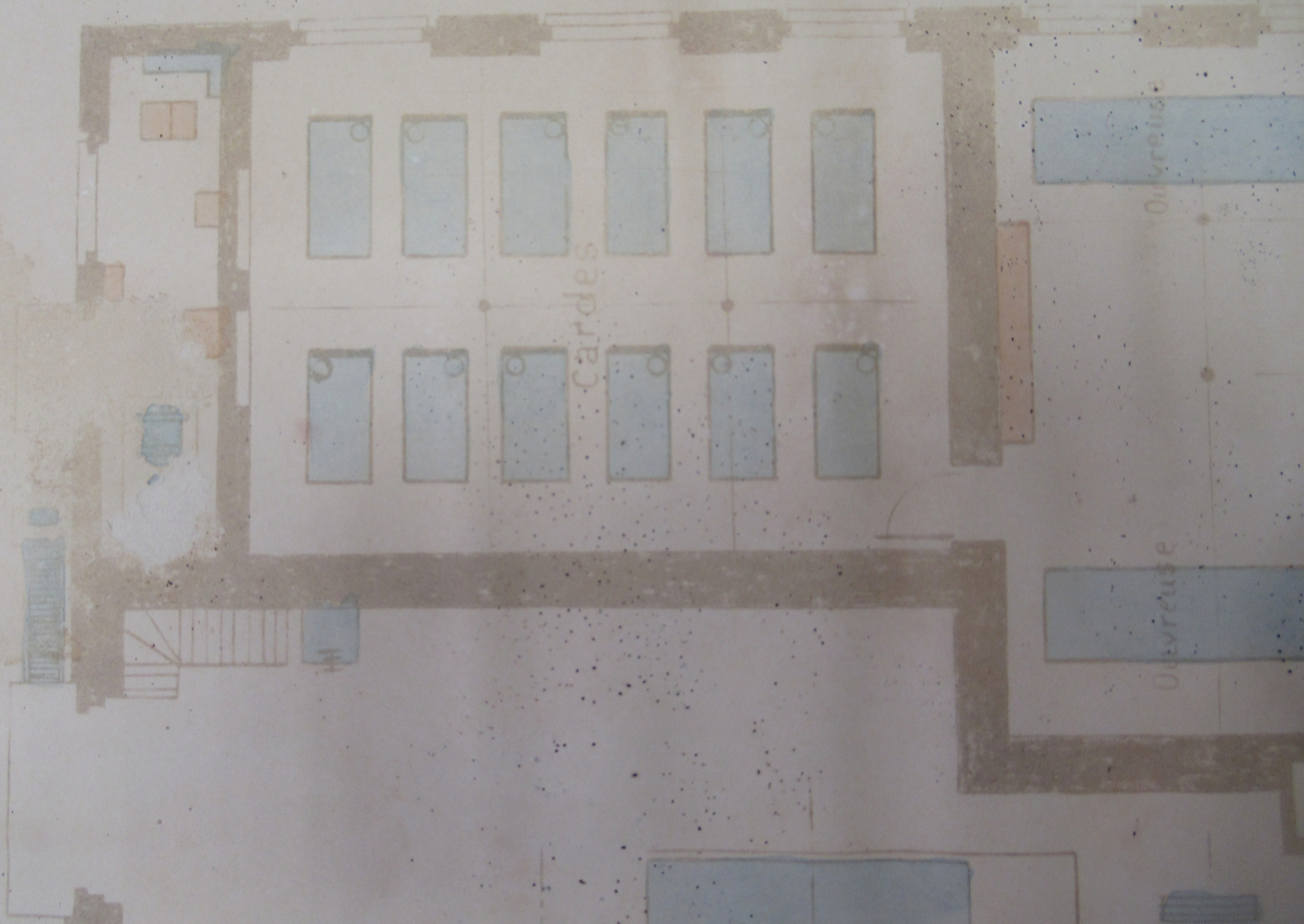


Cardes

Ouvrière

Ouvrière

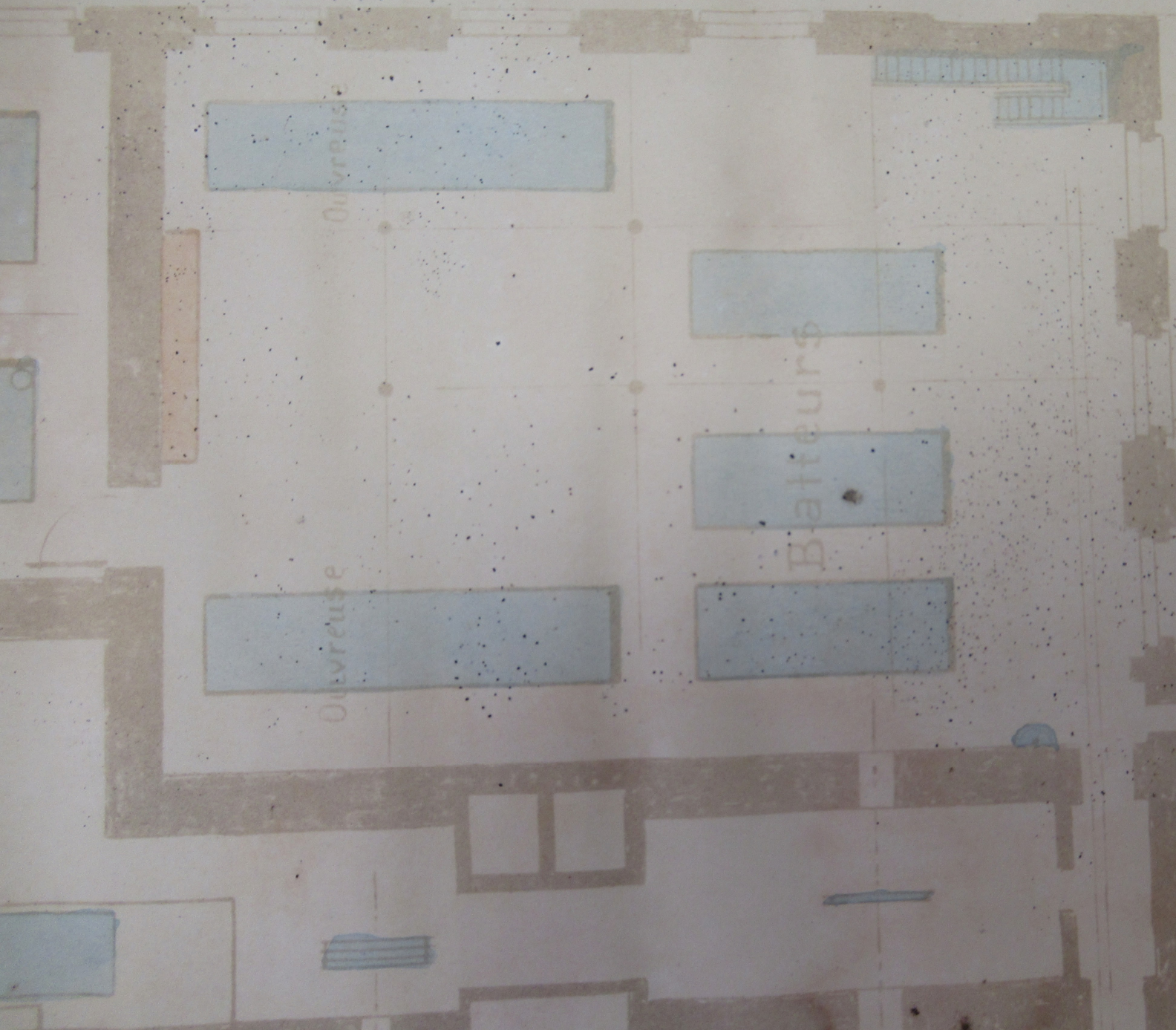
Batteurs



Cardes

Ouvreuse

Ouvreuse



Ouvreuse

Ouvreuse

Batteurs

Cheminée
à
poussières

22^m 18



28 16

8 00

