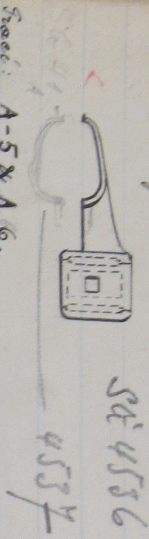


A 12440

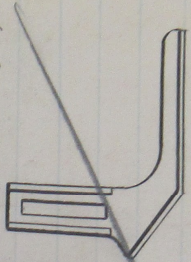
- S.G.C. -

SGM 1. Serrurier à main
à deux guides entrecroisés



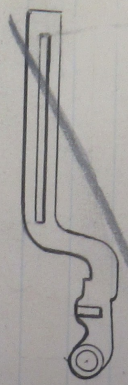
Tracé: A-5 X A-6.

SGM 2. Pan incliné à déclanchement



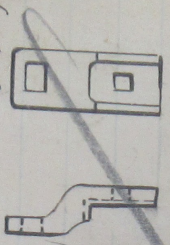
Tracé: A-5

SGM 3. Serrurier à main à deux guides
à gâchette



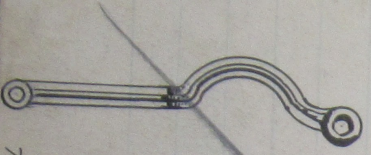
Tracé: A-5

SGM 4. Patte de fixation du fer
à main



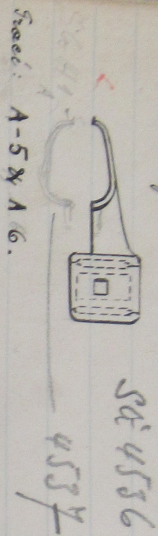
Tracé: A-2

SGM 5. Serrurier de réglage de la règle



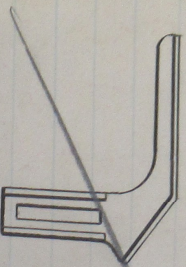
Tracé: A-3.

SGM 1. Serrure du plan incliné à délam.
d'un des demi-guides enroulés



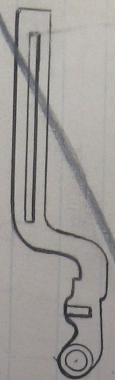
Scale: A-5 X A 6.

SGM 2. Plan incliné à délam.



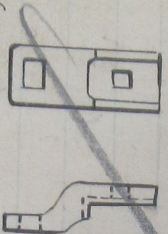
Trace: A-5

SGM 3. Serrure à entrée partant
à gauche



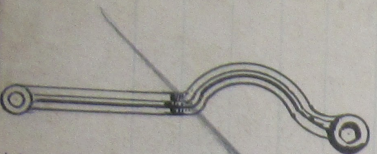
Trace: A-5

SGM 4. Part de fixation du tour
à entrée



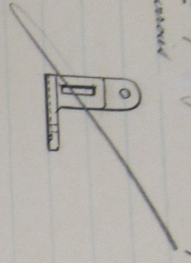
Trace: A-2

SGM 5. Serrure de réglage de la règle



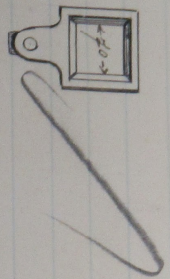
Trace: A 3.

SGH 6 Quantité prise de la tête de la
poutre enroulée



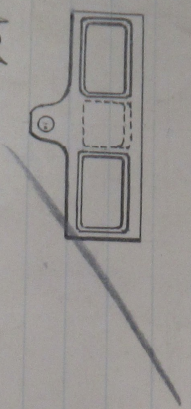
Trace: A-2

SGH 7 Partie gauche



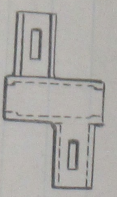
Trace: A-2

SGH 8 Guide enroulée d'acier usé.
Fusil.



Trace: A-1

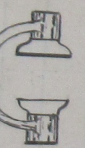
SGH 9 Attache bride des entrees des
bois de lancement.



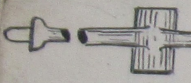
Trace: A-16

St 4675

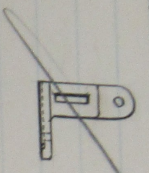
SGH 10 Bois de lancement des trais
d'assemblage.
(Remarque: voir SG 4669)



Trace: A-16

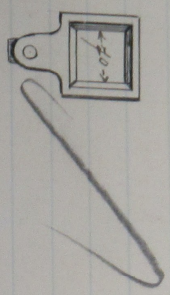


SGH 6. Spindelgabeln an der Spitze der
Gabel einsetzen



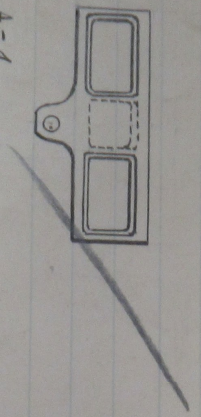
Tracé: A. 2

SGH 7. Rostel putze



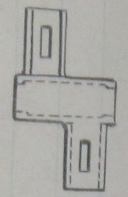
Tracé: A-8

SGH 8. Spindel einsetzen d'arbre net-
Fais.



Tracé: A-1

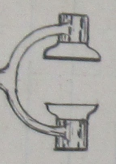
SGH 9. Attache bride des entrees des
Lames de la fourchette.



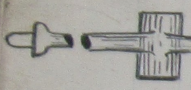
Tracé: A-16

St 4675

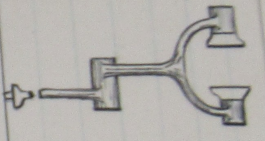
SGH 10. Lames detachables des tiges
d'accompagnement.
Remplace par SG 4603!



Tracé: A-16



SECRET 11. *Tracé de la serrure de 4to dentés.*
(Remplacé par 45-46-47)



Tracé: A-16

SECRET 12. *Appareil à 4to dentés*
de la serrure de 4to dentés
1er 8



Remplacé
par
SECRET 45.

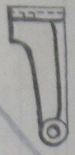
Tracé: A 16

SECRET 13. *Tracé d'assemblage*
de machine



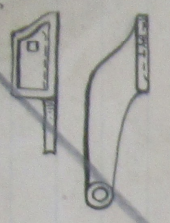
Tracé:

SECRET 14. *Tracé pour*
au finis d'assemblage



Tracé: A 18

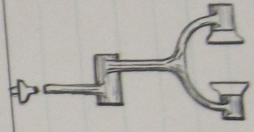
SECRET 15



Tracé: A-9

SGE 11. *Travail de liaison*
de la terre
de la terre.
(remplacé par SGE 45)

Trace: A-16



SGE 12. *Support pour les leviers*
de la terre de la terre

113



remplacé par SGE 45.

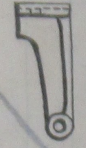
Trace: A 16

SGE 13. *Carre d'assemblage*
de machine



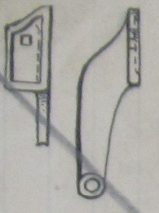
Trace:

SGE 14 *Equerre pour faire le plan*
de la terre d'aujourd'hui et de demain



Trace: A 18

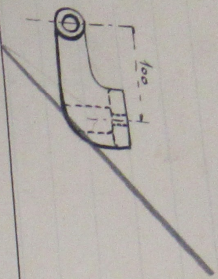
SGE 15



Trace: A-9

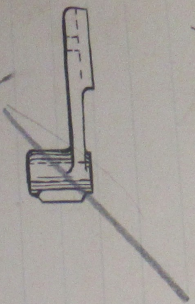
SGE 16.

Tracce: A-q.



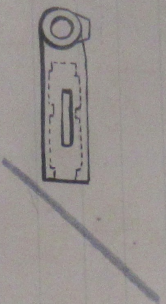
SGE 17.

Tracce: A-q.



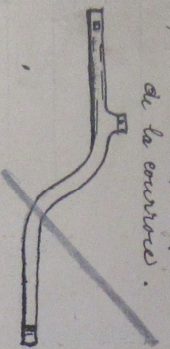
SGE 18

Tracce: A-q.



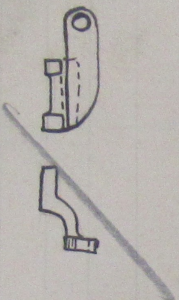
SGE 19.

disegno per la della esecuzione
di la macchine.



Tracce: A-q.

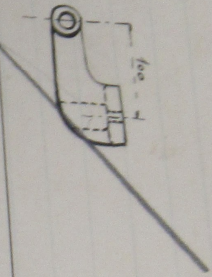
SGE 20



Tracce: A-q.

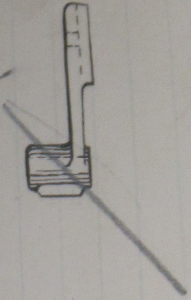
SGE 16.

Trace: A-q.



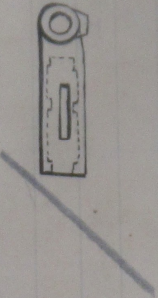
SGE 17

Trace: A-q.

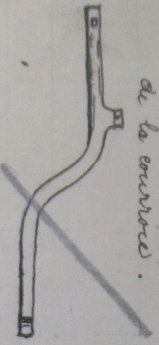


SGE 18

Trace: A-q.

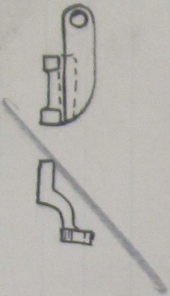


SGE 19. dessin pour le déplacement
de la courroie.



Trace: A-q.

SGE 20



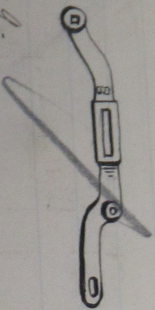
Trace: A-q.

SGH 31.



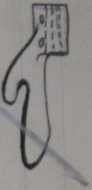
Trace: A-9. *machine part 4696*

SGH 32



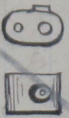
Trace: A-9.

SGH 33



Trace: A-10

SGH 34



Trace: A-10.

SGH 35



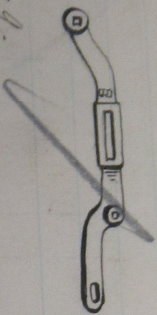
Trace: A-10.

SGH 21.



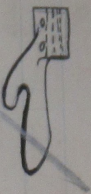
Trace: A - 9
SGH 22
SGH 23
SGH 24
SGH 25
SGH 26
SGH 27
SGH 28
SGH 29
SGH 30
SGH 31
SGH 32
SGH 33
SGH 34
SGH 35
SGH 36
SGH 37
SGH 38
SGH 39
SGH 40
SGH 41
SGH 42
SGH 43
SGH 44
SGH 45
SGH 46
SGH 47
SGH 48
SGH 49
SGH 50
SGH 51
SGH 52
SGH 53
SGH 54
SGH 55
SGH 56
SGH 57
SGH 58
SGH 59
SGH 60
SGH 61
SGH 62
SGH 63
SGH 64
SGH 65
SGH 66
SGH 67
SGH 68
SGH 69
SGH 70
SGH 71
SGH 72
SGH 73
SGH 74
SGH 75
SGH 76
SGH 77
SGH 78
SGH 79
SGH 80
SGH 81
SGH 82
SGH 83
SGH 84
SGH 85
SGH 86
SGH 87
SGH 88
SGH 89
SGH 90
SGH 91
SGH 92
SGH 93
SGH 94
SGH 95
SGH 96
SGH 97
SGH 98
SGH 99
SGH 100

SGH 22



Trace: A-9.

SGH 23



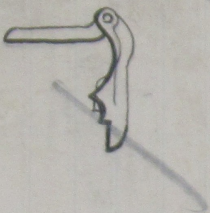
Trace: A-10

SGH 24



Trace: A-10.

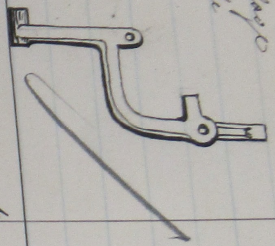
SGH 25



Trace: A-10.

SG

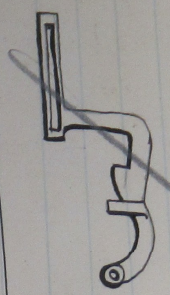
SGH 26 *serres à réglage
de la règle*



Trace: A-4.

SG

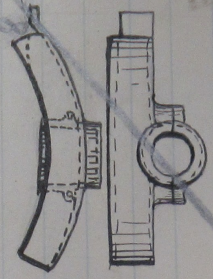
SGH 27 *serres à réglage avec serrure
de large réglage.*



Trace: A-7.

SG

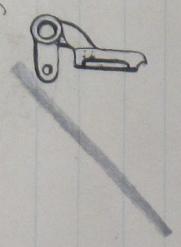
SGH 28 *serres de la eme 2e par réglage.*



Trace: A

SG

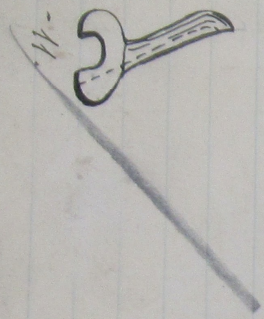
SGH 29 *Support du milieu de
traverse de réglage*



Trace: SG 10 15

SG

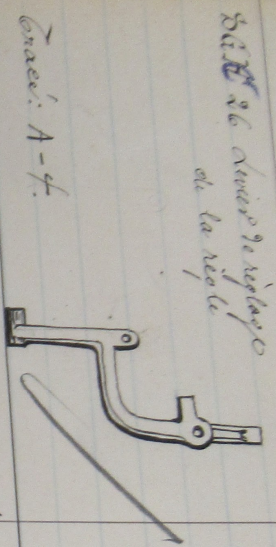
SGH 30. *Clouet - Borelet - en deux parties*



Trace: A-11.

56

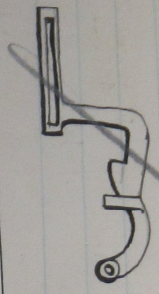
848 26. *Arrière de réglage de la règle*



Trace: A-7.

56

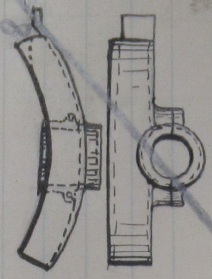
848 27. *Arrière à emboîter avec ressort de ligne rectif.*



Trace: A-7.

56

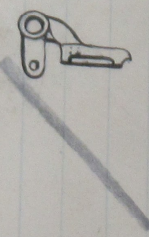
848 28. *Arrière 2e la com 2e par réglage.*



Trace: A

56

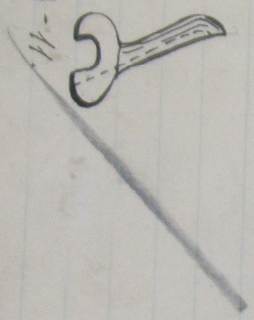
848 29. *Support au milieu de triangle de réglage*



Trace: S G 10 15

56

848 30. *Eloignés - Cercles - enclencheurs*



Trace: A-11

56 ~~36~~ 36. Tenoir a' deux crochets



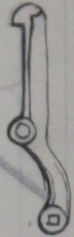
Trace: A-11.

57 ~~37~~ 37. Epave 2 anneaux
du crochet 2 anneux.



Trace: A-12.

58 ~~38~~ 38. Crochet 2 anneux 2e classe



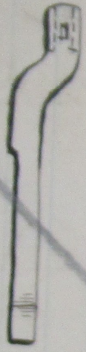
Trace: A-13.

59 ~~39~~ 39. Tenoir a' sonnette 9e la
trianglo 9e 9e classe



Trace: A-14.

60 ~~40~~ 35. Tenoir de 8a pour 8e 9e
trayage.



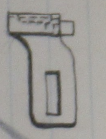
Trace: A-15.

56 SGE 31 *dentier à trois crochets*



Trace: A-11.

57 SGE 32 *dentier 2 crochets et 2 anneaux*



Trace: A-12.

58 SGE 33 *crochet 2 anneaux 2e classe*



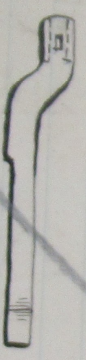
Trace: A-13.

59 SGE 34 *dentier à tamette 9e et 10e triangles 2e classe*



Trace: A-14.

60 SGE 35 *dentier de la première 9e et 10e triangles*



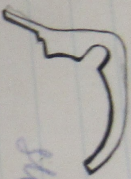
Trace: A-15.

S6

S.G. C 36

Quatre roues

Pompe à l'eau



si 4678

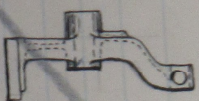
Tracé: A-17.

S1

S.G. C 37

Support de devant de l'axe

à excentriques
avec guide de la denture
gauche - couronne

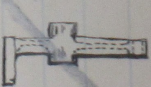


Tracé:

S2

S.G. C 38

Support de devant de l'axe
à excentriques avec guide
de la denture



Tracé: 23

S3

S.G. C 39

Oriel de la denture



Tracé: 23

S4

S.G. C 40

Bois de roulement de
l'axe de l'arbre



Tracé: 24

S.G. 36 *Crane "vieux"*

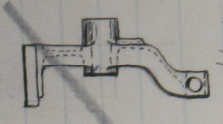
Pompe à l'eau



si 467E

Crane: A-17.

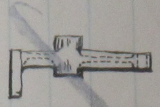
S.G. 37 *Support de devant de l'an*
tre si excentrique



avec guide de la chaîne
gauche - corneille

Crane:

S.G. 38 *Support de derrière de l'an*
à excentrique avec guide
de la chaîne



Crane: 23

S.G. 39 *Ornel de la chaîne*



Crane: 23

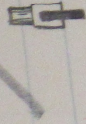
S.G. 40 *Service de roulage des*
tois de charbon



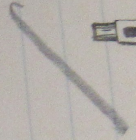
Crane: 24

21

S.G.C 41 - Glins



Gracé: 24

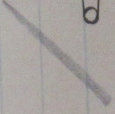


S.G.C 42 - Boile pour illes



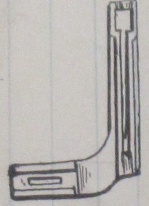
Gracé: 24

S.G.C 43 - Serier plectrometrum



Gracé: 24

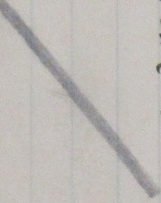
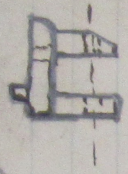
S.G.C 44 Epaveur du gale de dielanehe. mund.



St. 4678

Gracé: 24

S.G.C 45 - Pappard pient nuplygand la muelle St. E. 12.



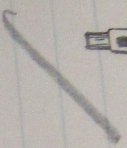
Gracé A 26

51

S.G.C 41 - Olive

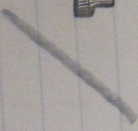


Trace: 27



52

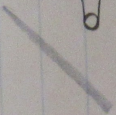
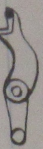
S.G.C 42 - Rivet pour olive



Trace: 27

53

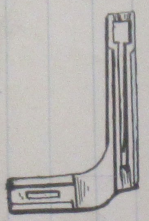
S.G.C 43 - Rivet de diamant



Trace: 27

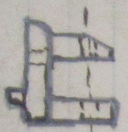
S.G.C 44 Epave au gale de diamant.
mend.

Sti 4678

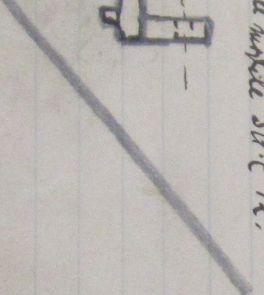


Trace: 27

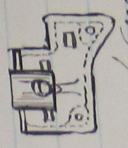
S.G.C 45 - Fuyant pivot remplissage
à viselle St. P. 12.



Tracé A 26



51
562 - ~~Requiem~~ ~~part~~ du bar de
l'arts national.



invertebral
vein.

✓
Dr. M. J. C. S.
29. 10. 08.

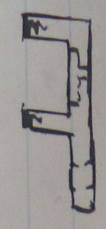
52
563 - ~~Requiem~~ ~~part~~ du bar de
l'arts national.



de l'arts national.

✓
Dr. M. J. C. S.
31. 10. 08.

53
564 - ~~Requiem~~ ~~part~~ du bar de
l'arts national.

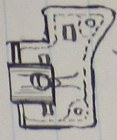


de l'arts national.

✓
Dr. M. J. C. S.
31. 10. 08.

54
565 - ~~Requiem~~ ~~part~~ du bar de
l'arts national.

51. SA-448 - Support du bras de
l'arche porteciel.



Imprimé au
Japon.

Dr. M. J. G. S.
29.10.62.

Tracé

52-1-47 - Support du bras
de l'arche porteciel.



Dr. M. J. G. S.
31.10.62

Tracé

53-1-48 - Support pour idem.



Dr. M. J. G. S.
31.10.62

Tracé