

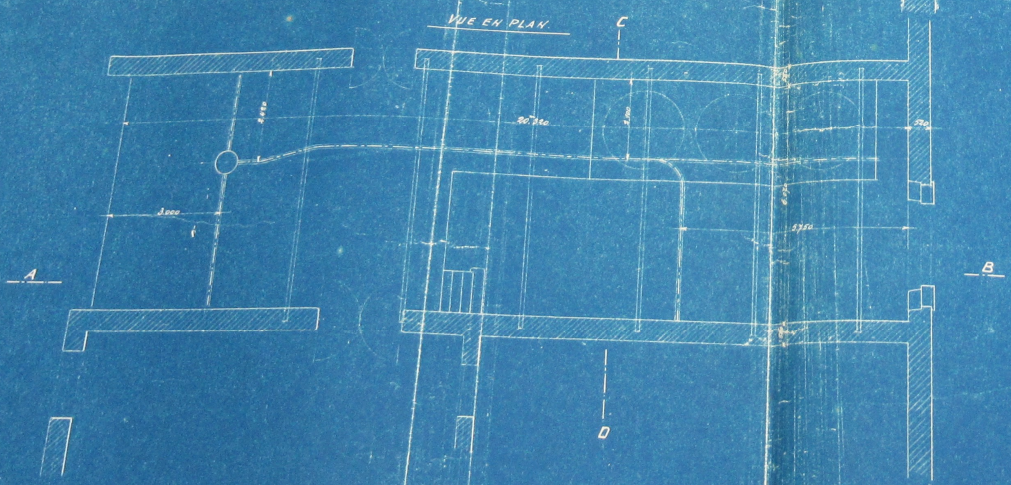
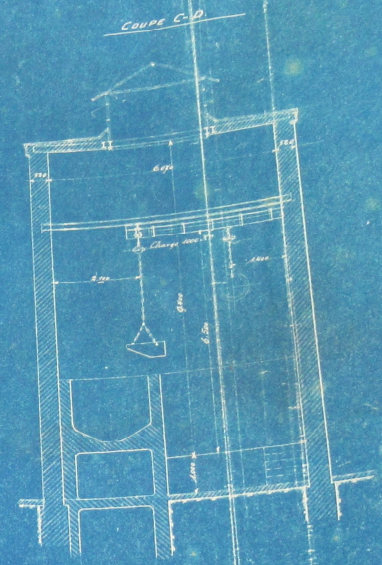
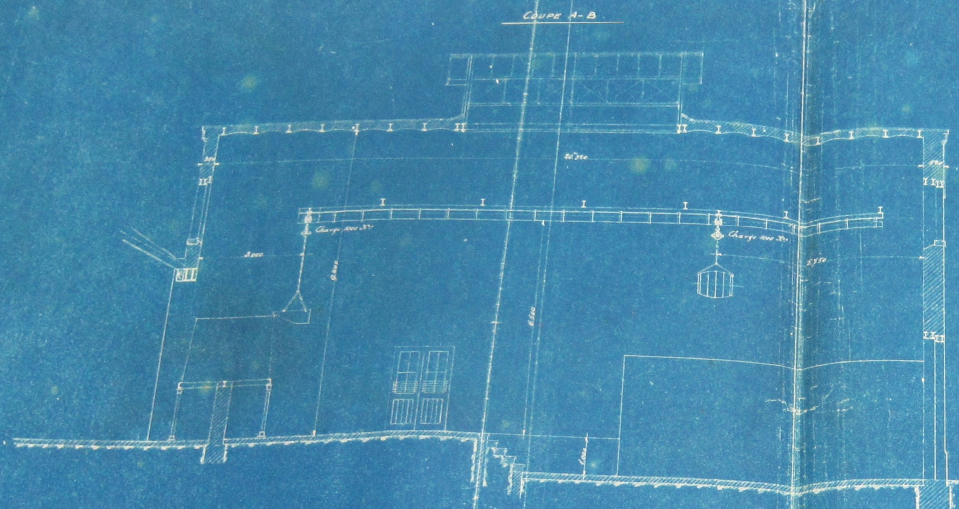
A2 DMC 542 - 554

A2 DMC 446 - 465

Désignation des plans contenus dans ce dossier

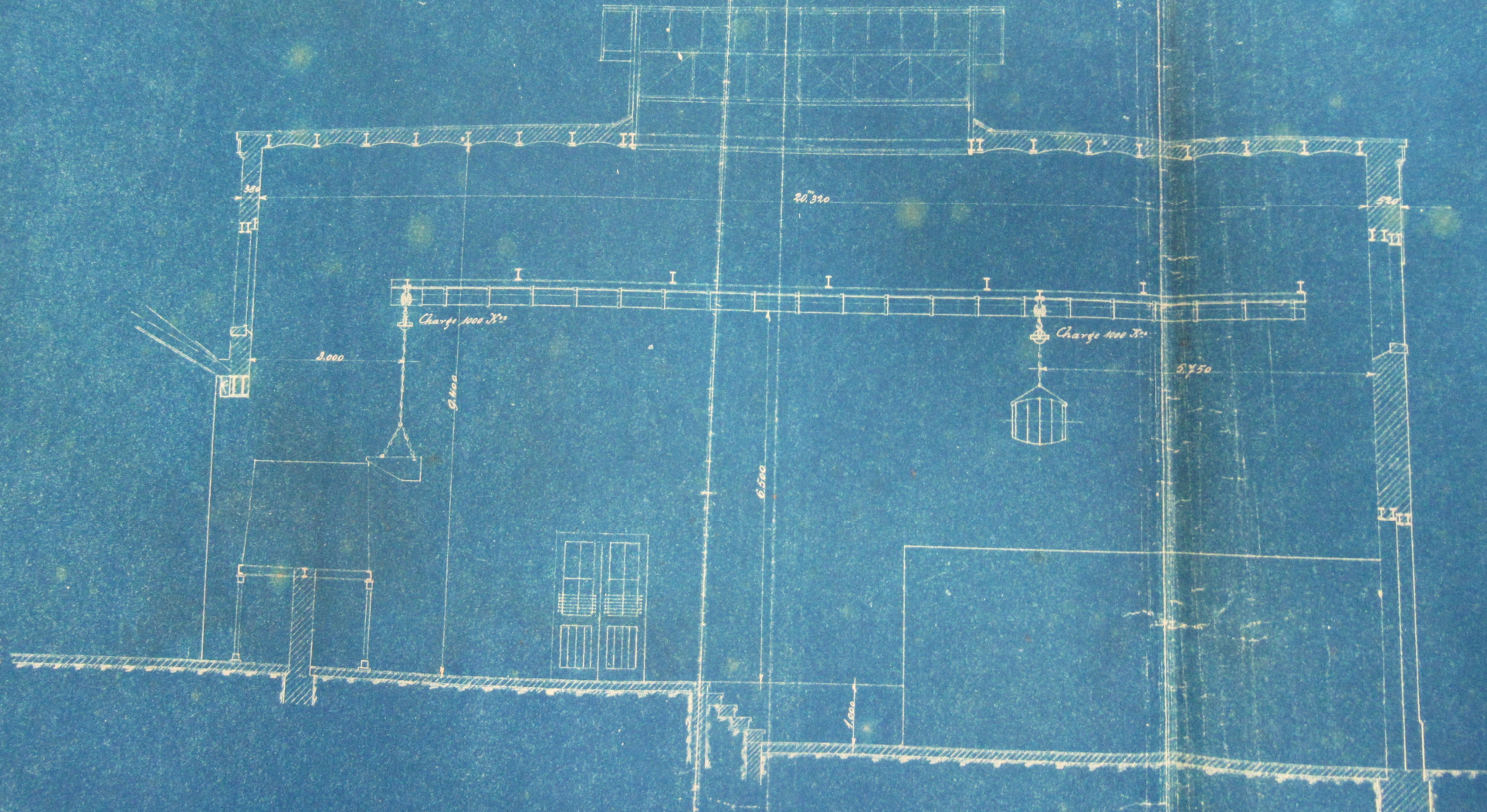
Nos. d'ordre	Nos. des plans	Désignation	Date d'exéc. .
1	2067	Nouveau chlorage - Ens.	Juin 1909
2	2070	" " Coupe Transv.	" "
3	2068	" " " Longitu.	" "
4	10834	Disposition du chlorage I	
5	10833	Chlorage & acidage - Inst. -	Sept. 1913
6	21525	Réfrigérant de chlore - Ens -	Avril 1927
7	21544	" " " Echaffaudage	" "
8	24482	Agrandissement de la prépar. de chlore	Avri 1930
9	10431	Voie suspendue local " " "	Mai 1913
10	11173	Suspension des conduites Chl. II	Nov. 1913
11	10233	Fosses pour chlore & acide chl. I	Avri 1913
12	10253	" " " " " " II	" "
13	10487	" " La prépar. de chlore.	
14			

12 DMC 550

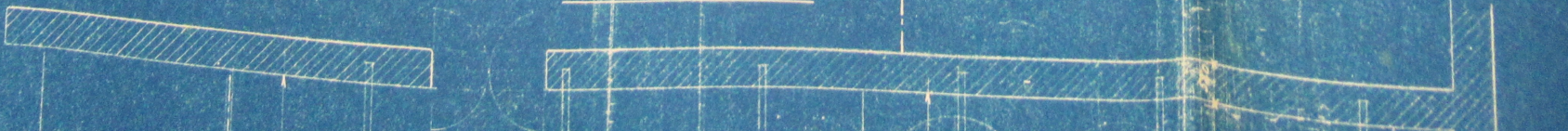


DOLLFUS MIEG & C^{ie} Société
BLANCHIMENT I.
VOIE SUSPENDUE POUR LE
LOCAL DE PREPARATION
DU CHLORE.
Echelle: 1:50 N^o 1

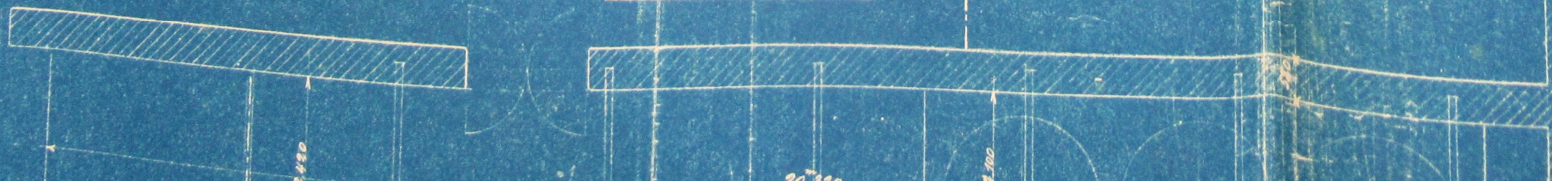
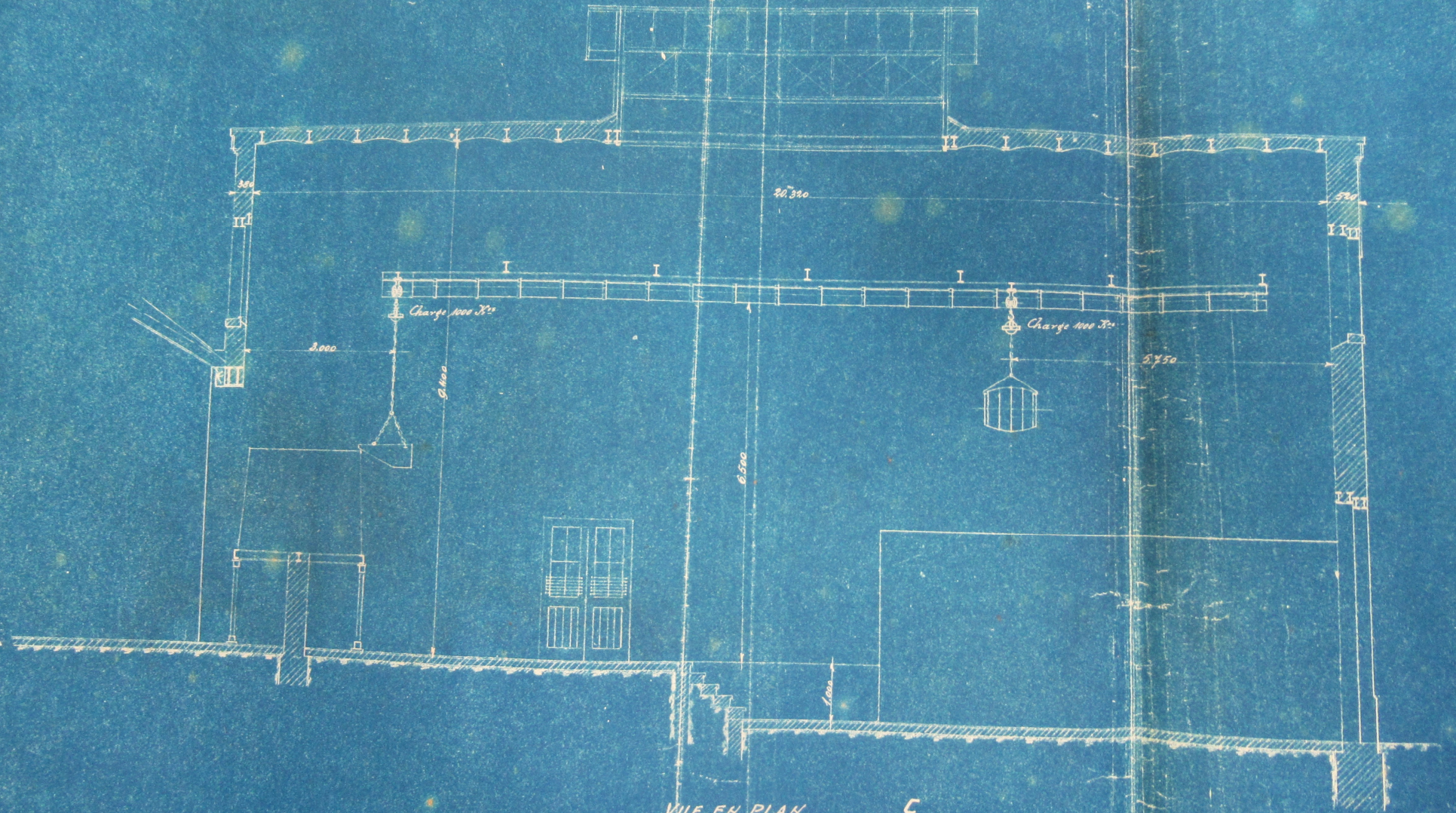
COUPE A-B



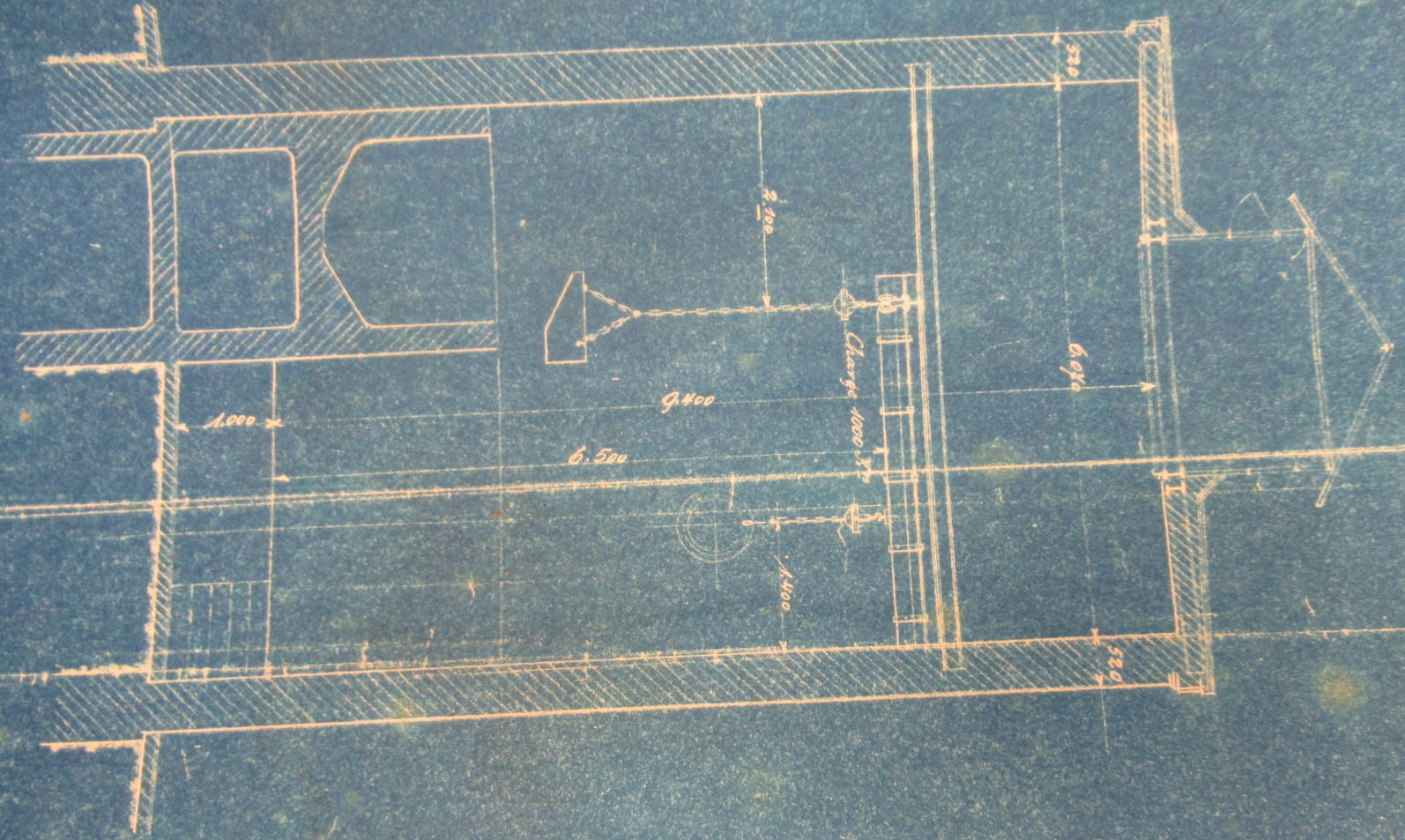
VUE EN PLAN

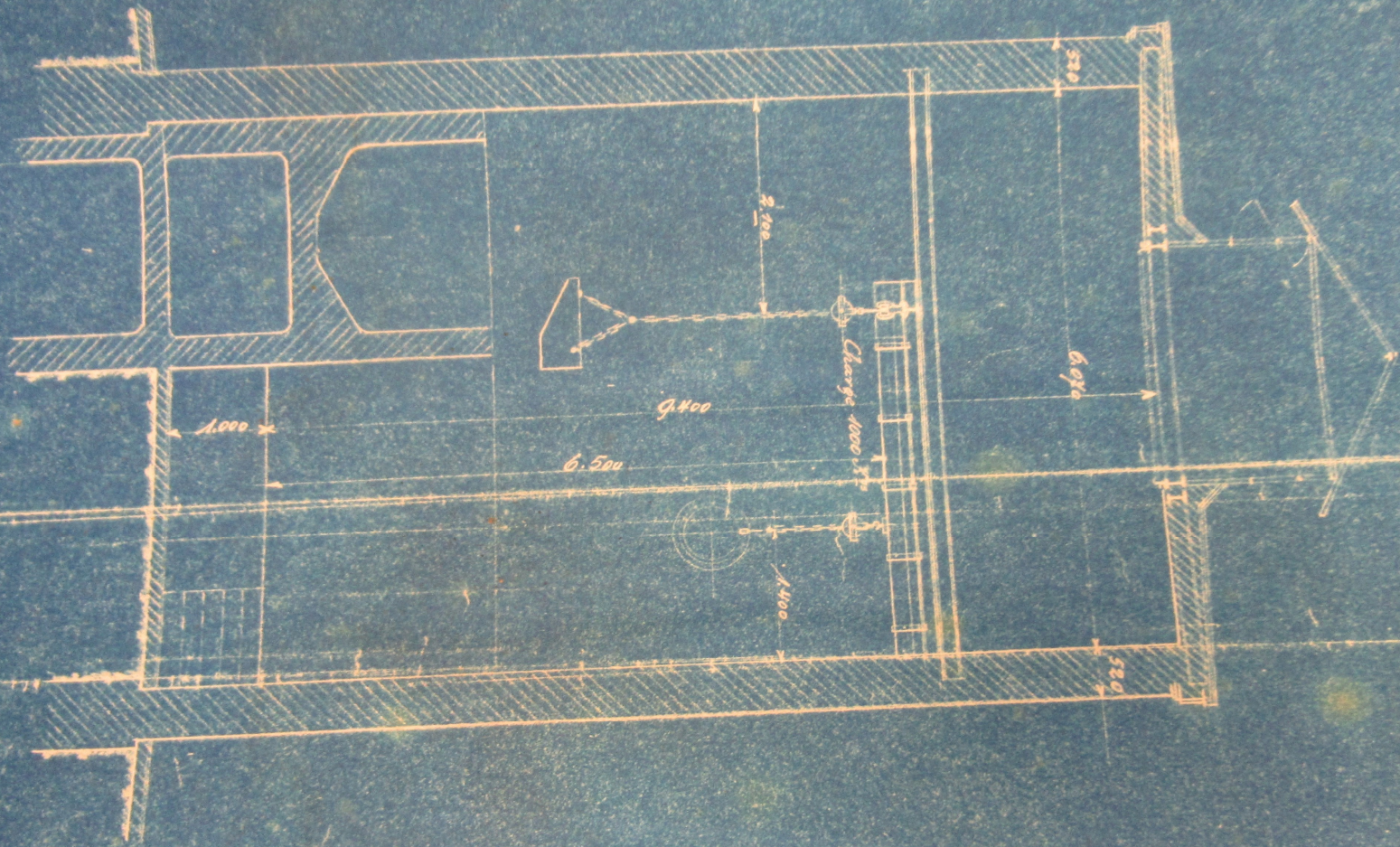


COUPE A-B



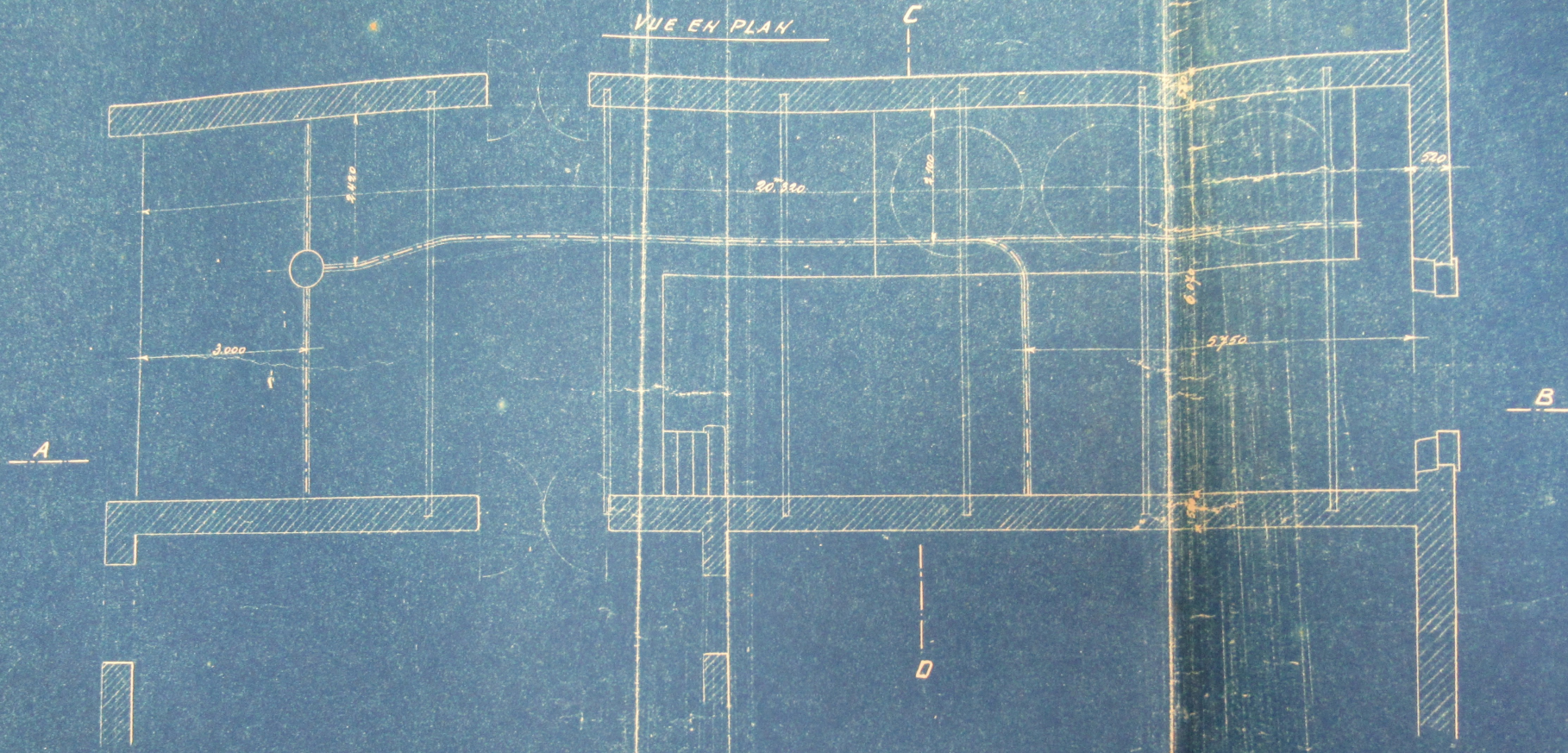
COUPE C-D

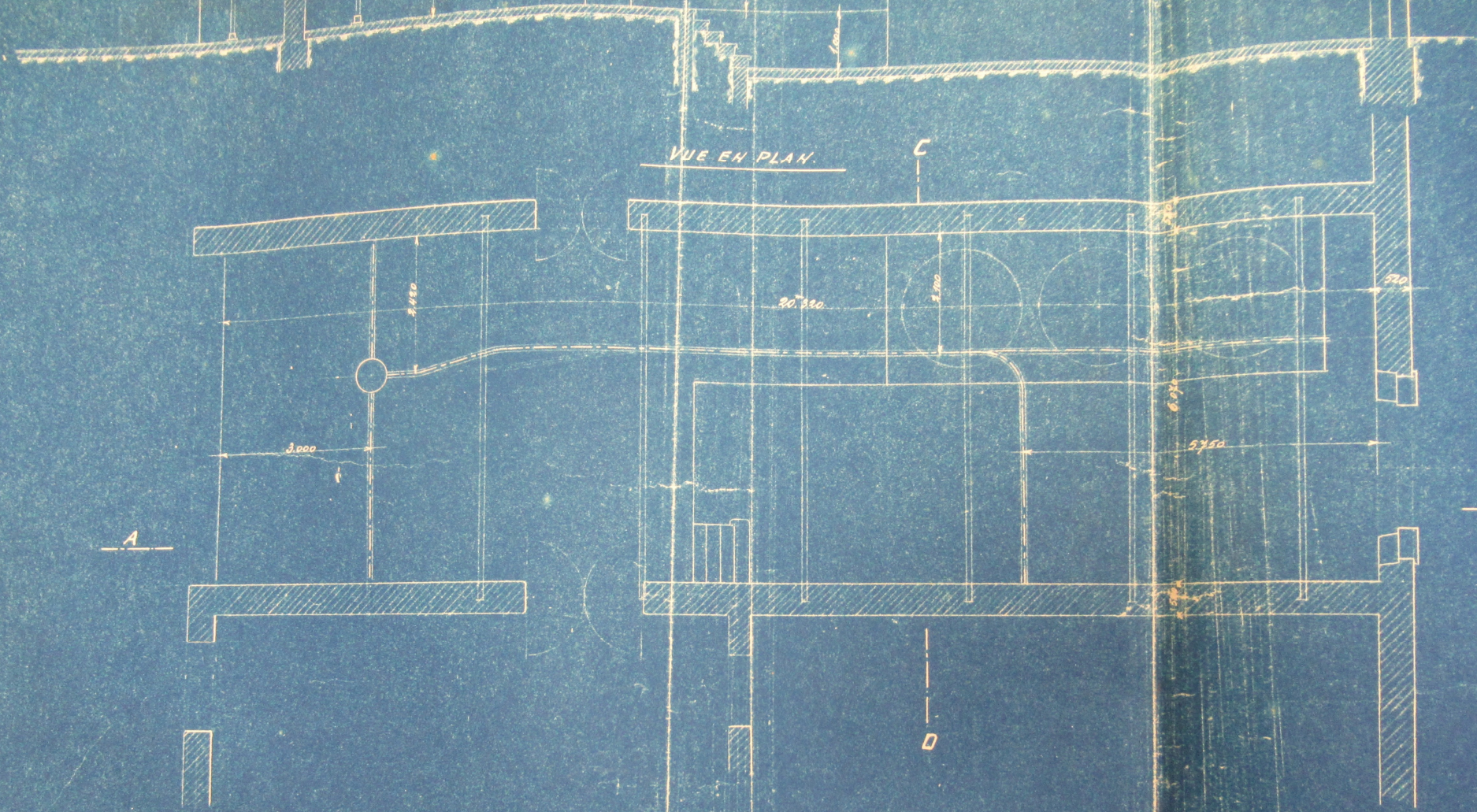




COUPE C-D

VUE EN PLAN.





DOLLFUS MIEG & C^{ie} Société anonyme

BLANCHIMENT II.

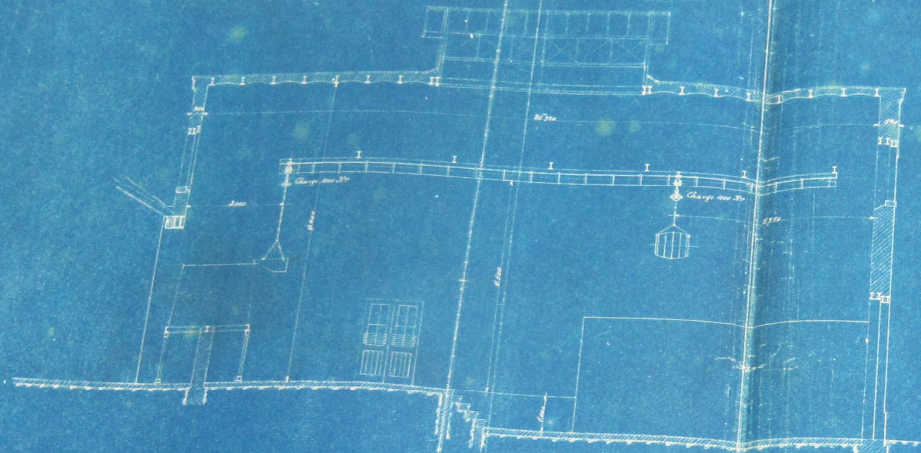
VOIE SUSPENDUE POUR LE
LOCAL DE PRÉPARATION
DU CHLORE.

18 MAI 1913

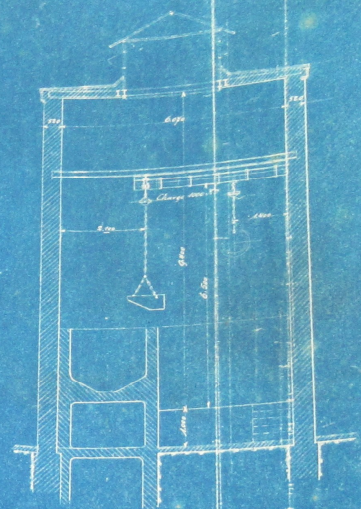
Echelle: 1:50

N^o 10431⁴

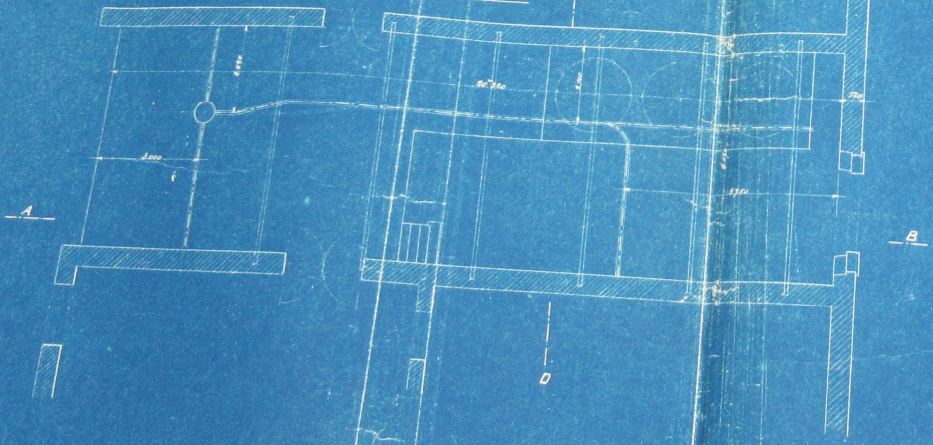
Coupe A-B



Coupe C-D



VUE EN PLAN



DOLLFUS MIEG & C^{ie} Société anonyme
 BLANCHIMENT I.
 VOIE SUSPENDUE POUR LE
 LOCAL DE PREPARATION
 DU CHLORE
 18 MAI 1918
 Echelle: 1:50 N°10431