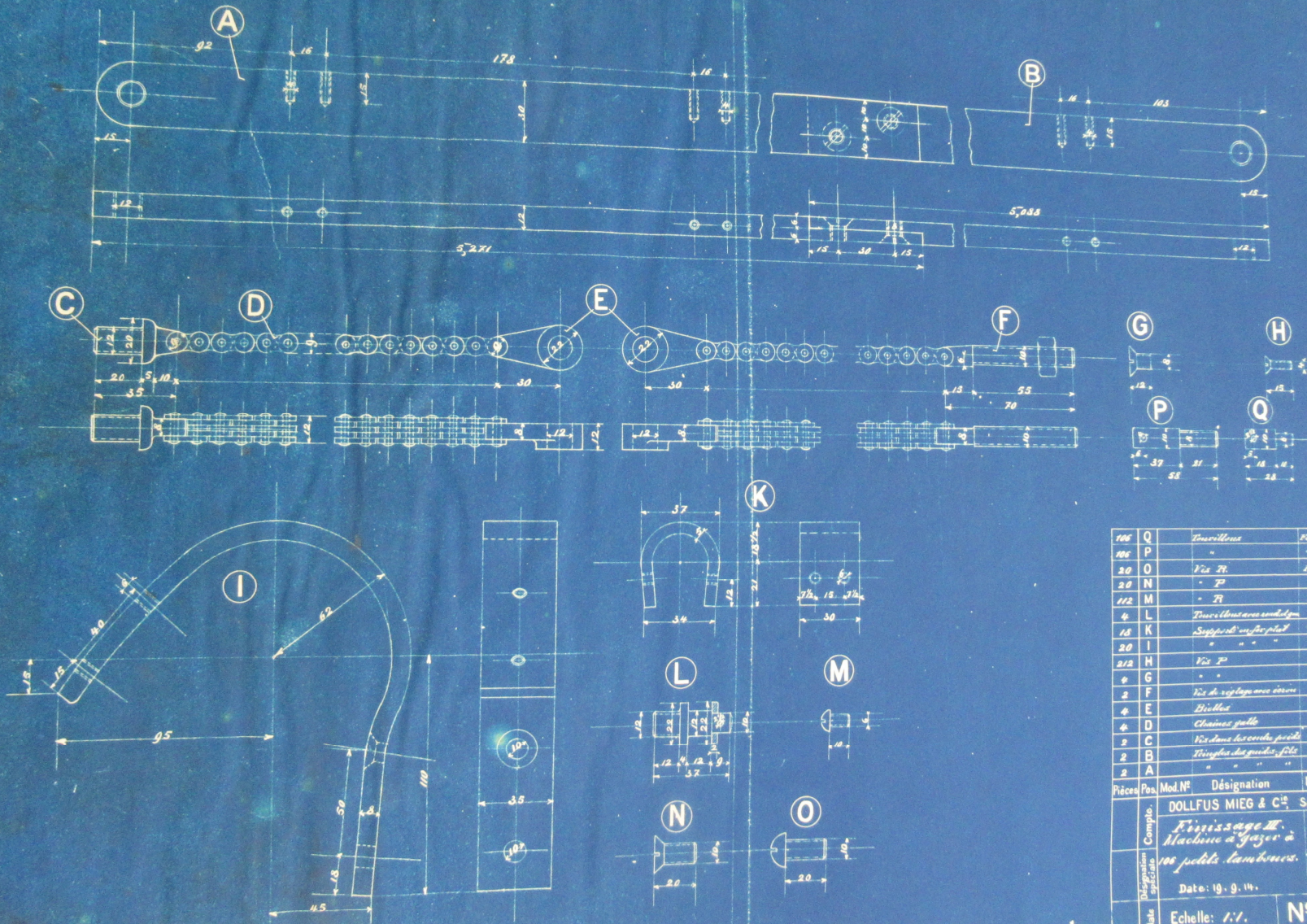
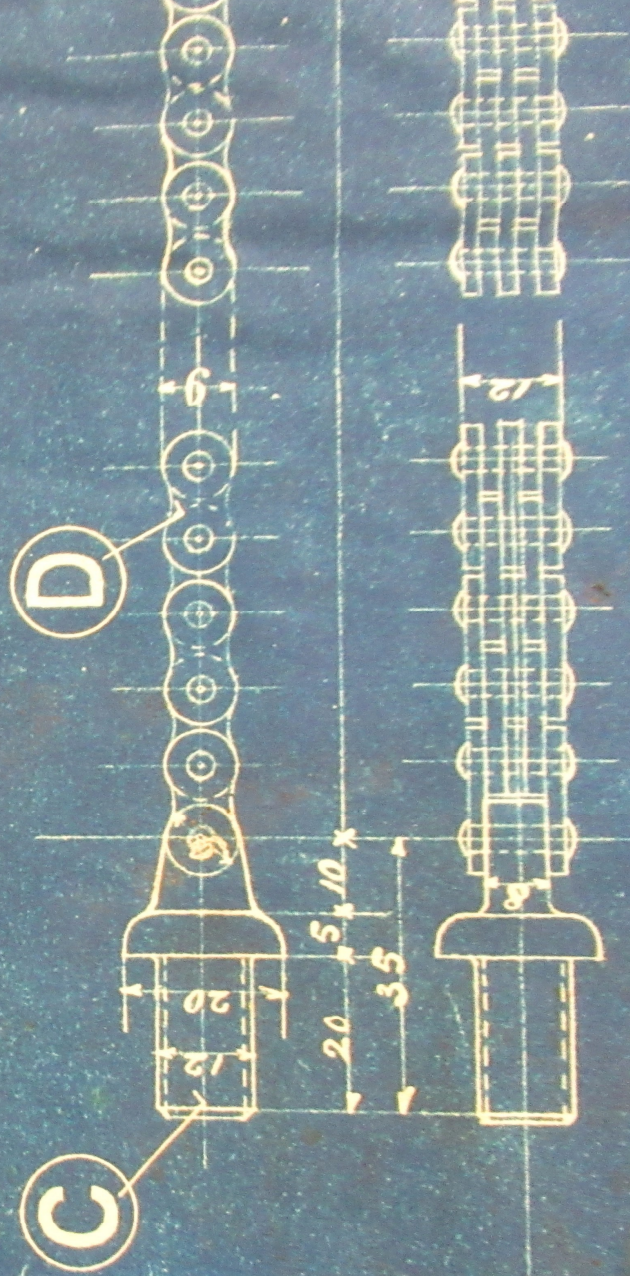
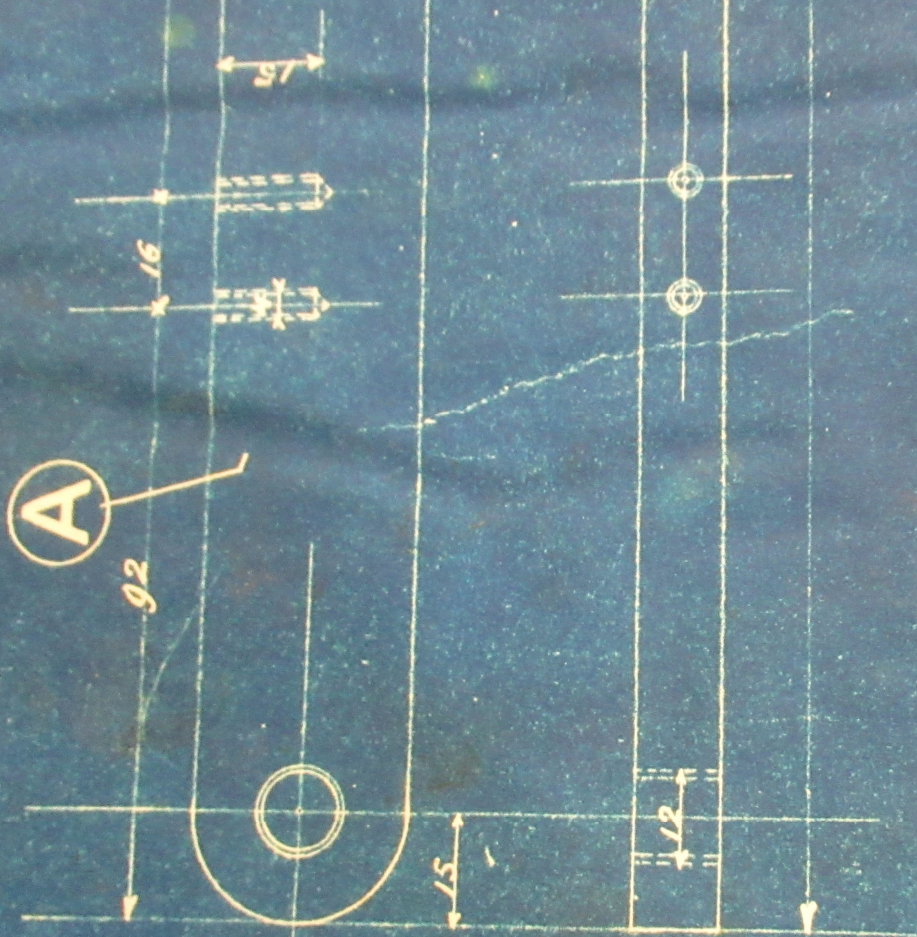


12 DMC 135-180

12DMC 142



Pos.	Mod.N°	Désignation	Mat.	Observation	
106		Tourillons	For		
106		"	"		
20		Via For	For	10Z	
20		" For	"	10Z	
112		" For	"	6"	
4		Tourillons avec rondelle	"		
15		Supports en fer plat	"	3515	
20		" " " "	"	3518	
2/2		Via For	"	4Z	
4		" " " "	"	8"	
2		Via de réglage avec écrou	"	10Z	
4		Buttes	"		
4		Châssis pelle	"		
2		Via dans les cercles petits	"		
2		Triangles des guides, file	"	30412	
2		" " " "	"	"	
2		" " " "	"	"	
Préces	Pos.	Mod.N°	Désignation	Mat.	Observation
			DOLLFUS MIEG & C ^{ie}		Société anonyme
	Compte		Frottoirage II.		
	Application		Machine à tisser à		
			100 petits lambeaux.		
	Date		Date: 19. 9. 14.		Dessiné par:
			Echelle: 1/1.		G. Roy.
			N° 13245.		



A

D

C

A

92



15

178

30

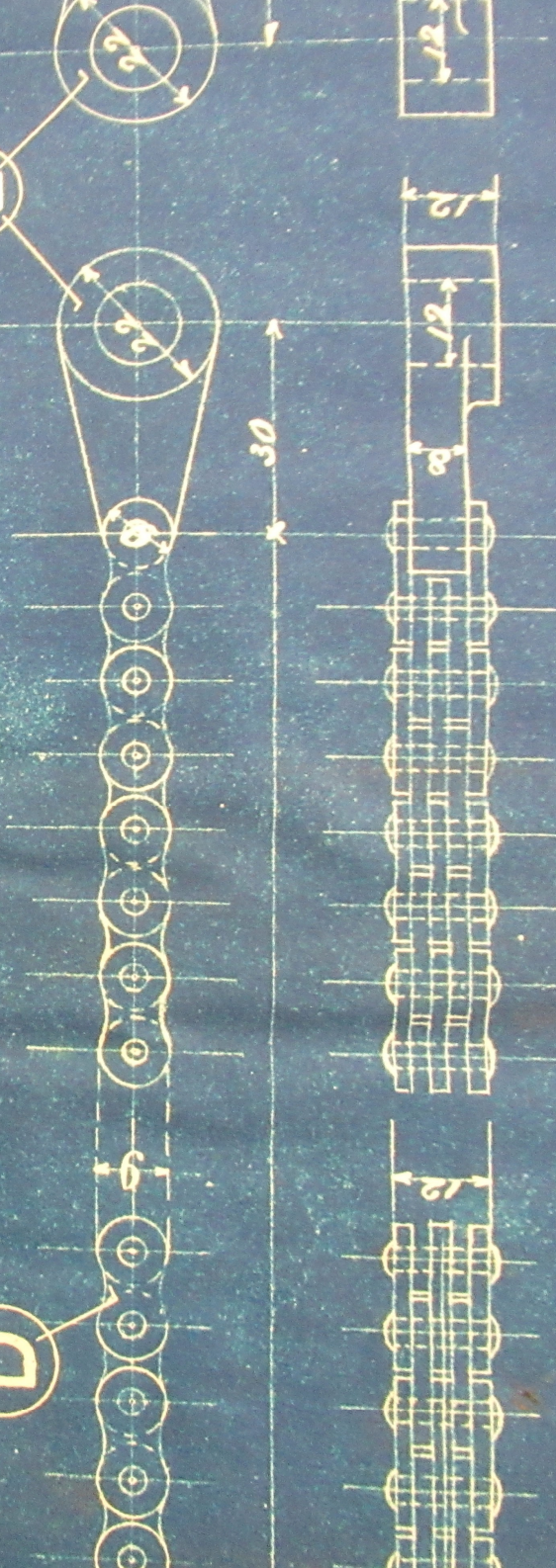
12

5271



D

E



30

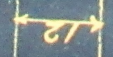
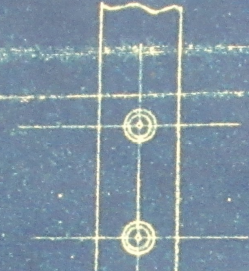
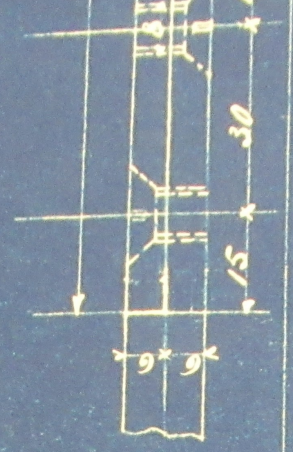
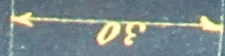
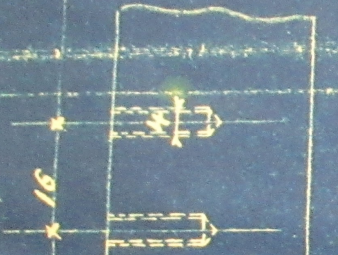
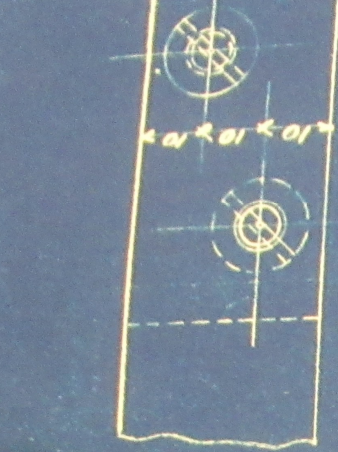
12

12

12

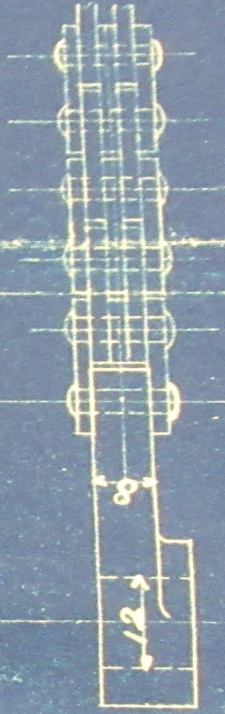
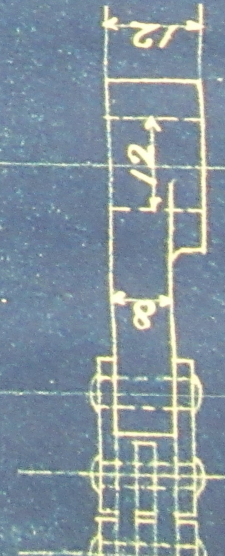
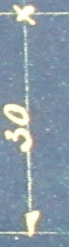
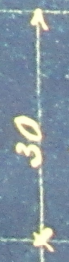
12

178



5,271

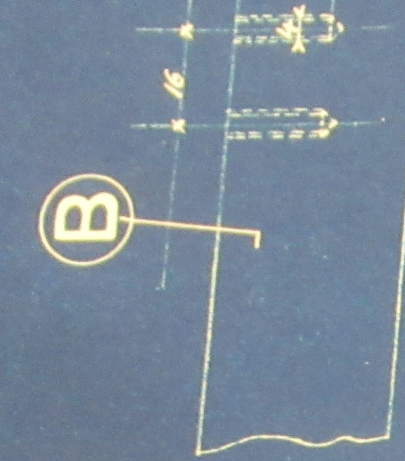
E



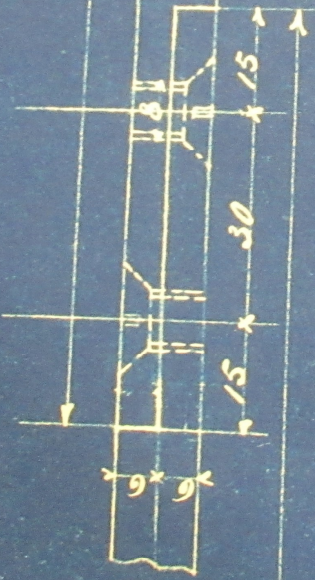
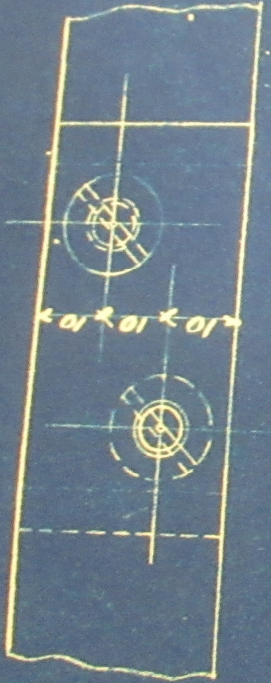
K



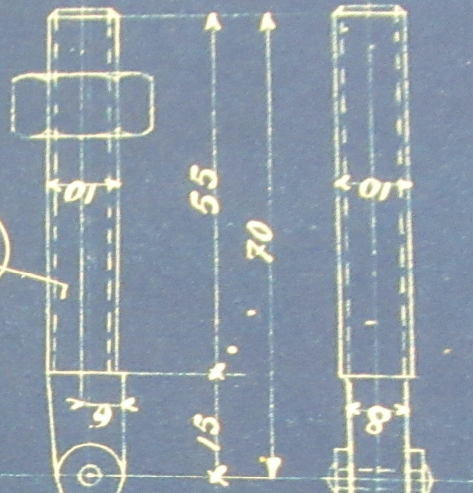
B



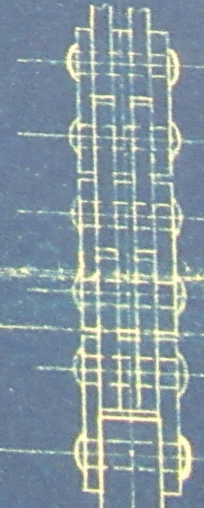
5,088



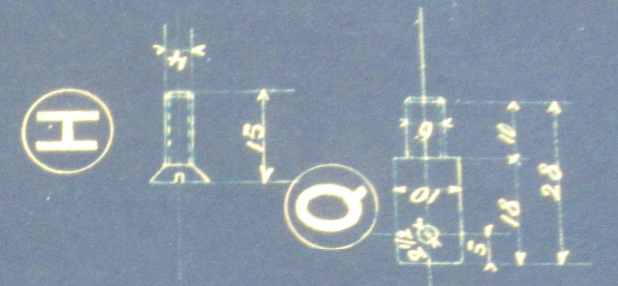
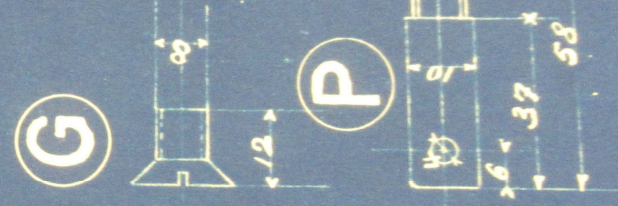
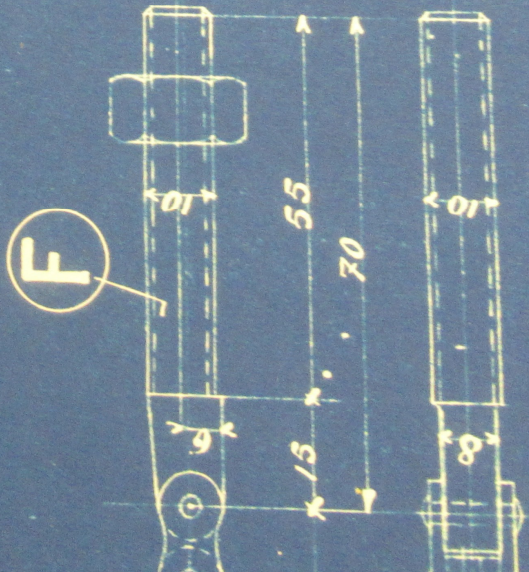
F



K

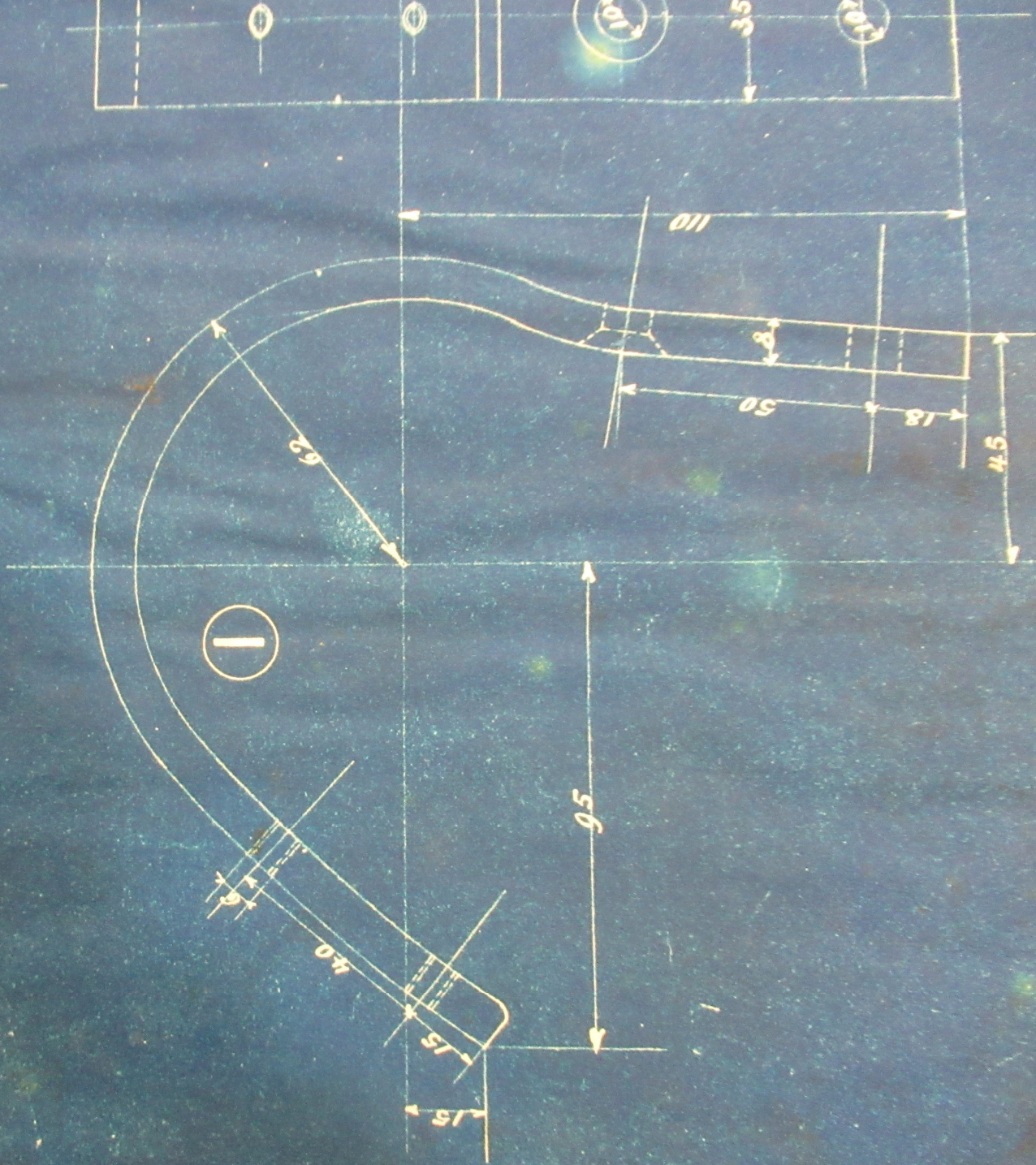
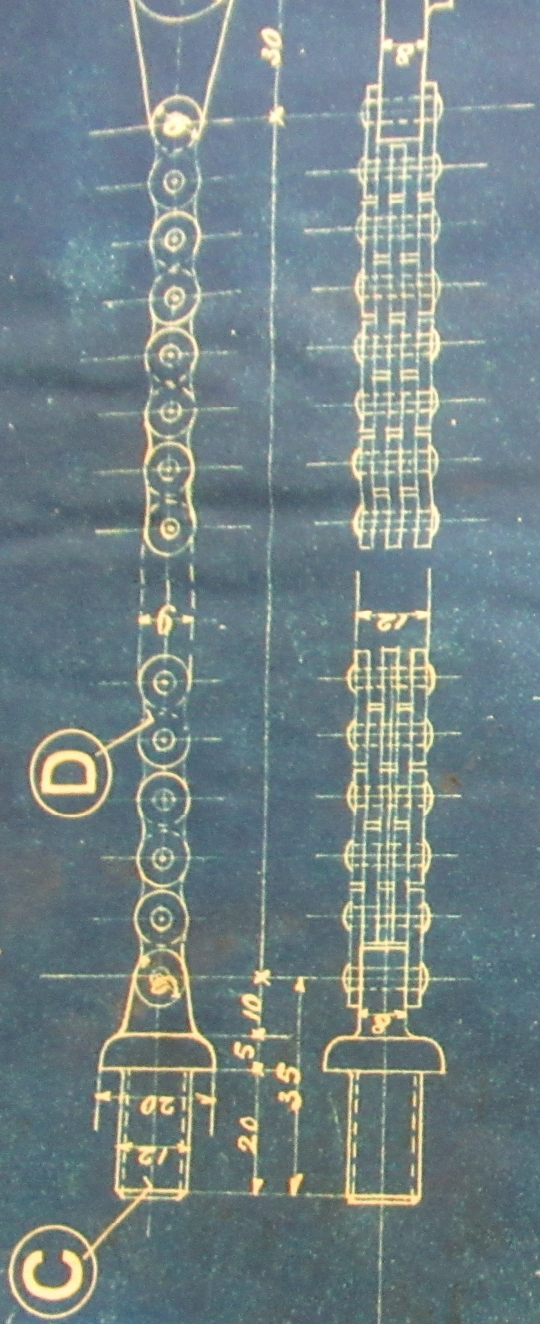


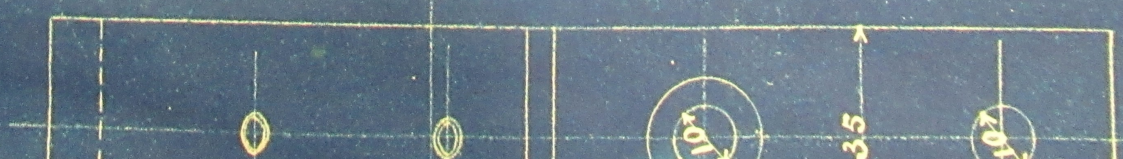
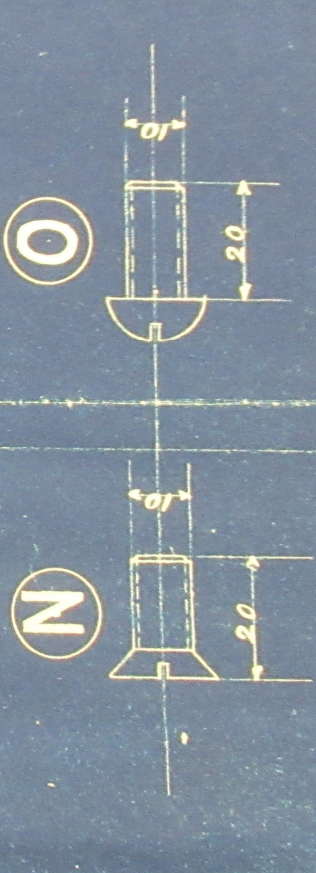
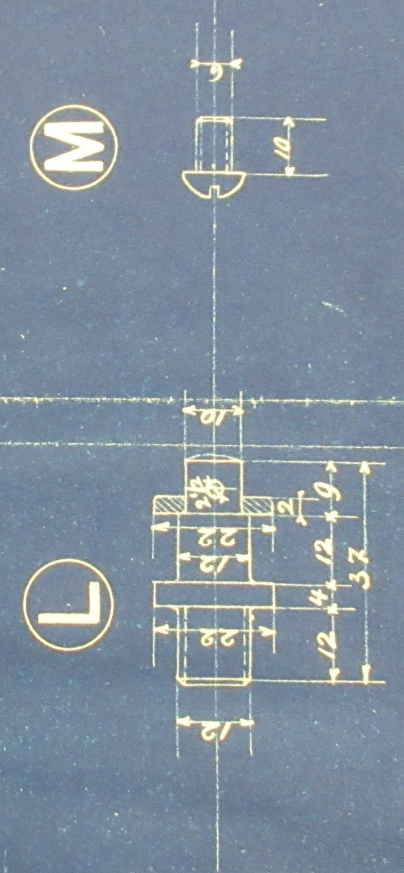
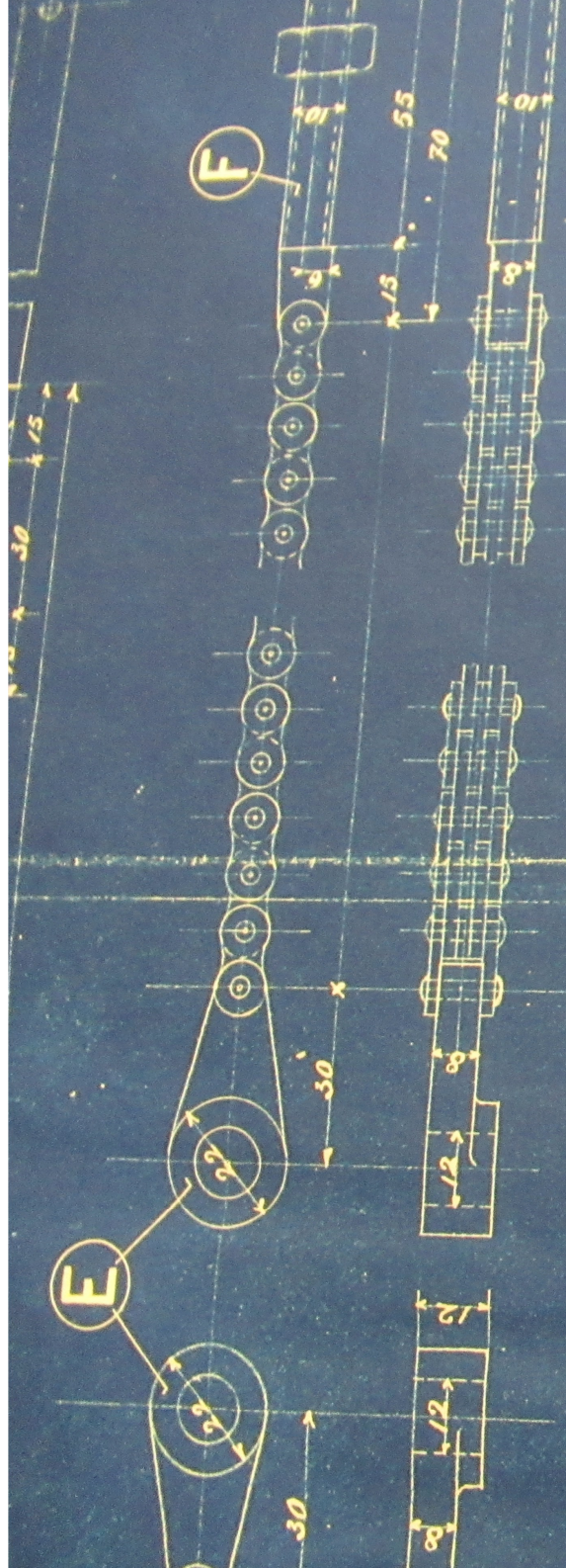
1/2

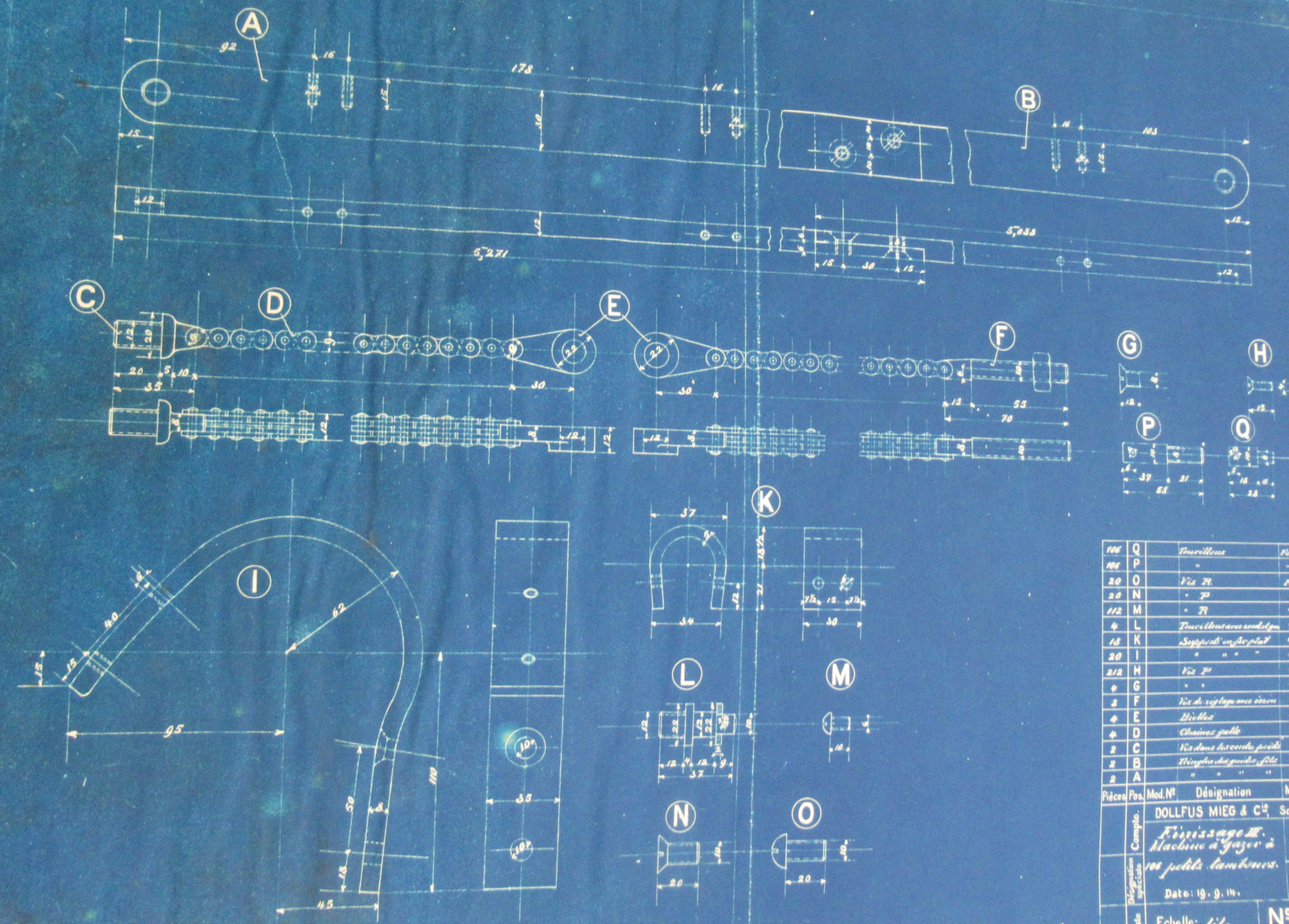


	Tourillons	Pes
106	Q	"
106	P	"
20	O	10 2/3"
20	N	" 10"
		" 6"

5,271







Pos	Q	Descript.	Mat.	Observation
100	P	"	"	"
20	Q	Vis 20	Vis	10%
20	N	" 20	"	10%
112	M	" 21	"	0%
4	L	Fourchettes avec rondelles	"	"
18	K	Supports en acier plat	"	3055
20	I	" " "	"	3518
218	H	Vis 20	"	0%
2	G	" " "	"	0%
2	F	Vis de réglage avec écrous	"	10%
2	E	Diodes	"	"
2	D	Châssis petits	"	"
2	C	Vis dans la seconde partie	"	"
2	B	Vis dans la seconde partie	"	3055
2	A	" " "	"	"

Pièces	Pos.	Mod. N°	Désignation	Mat.	Observation
			DOLLFUS MIEG & C ^o		Société anonyme
			Finitions II.		
			Machines à tisser à		
			les petits lambeaux.		
			Date: 19. 9. 14.		Dessiné par: G. Rey.
			Echelle: 1/1.		N° 13245.