

1207C 213 - 218

D.M.C

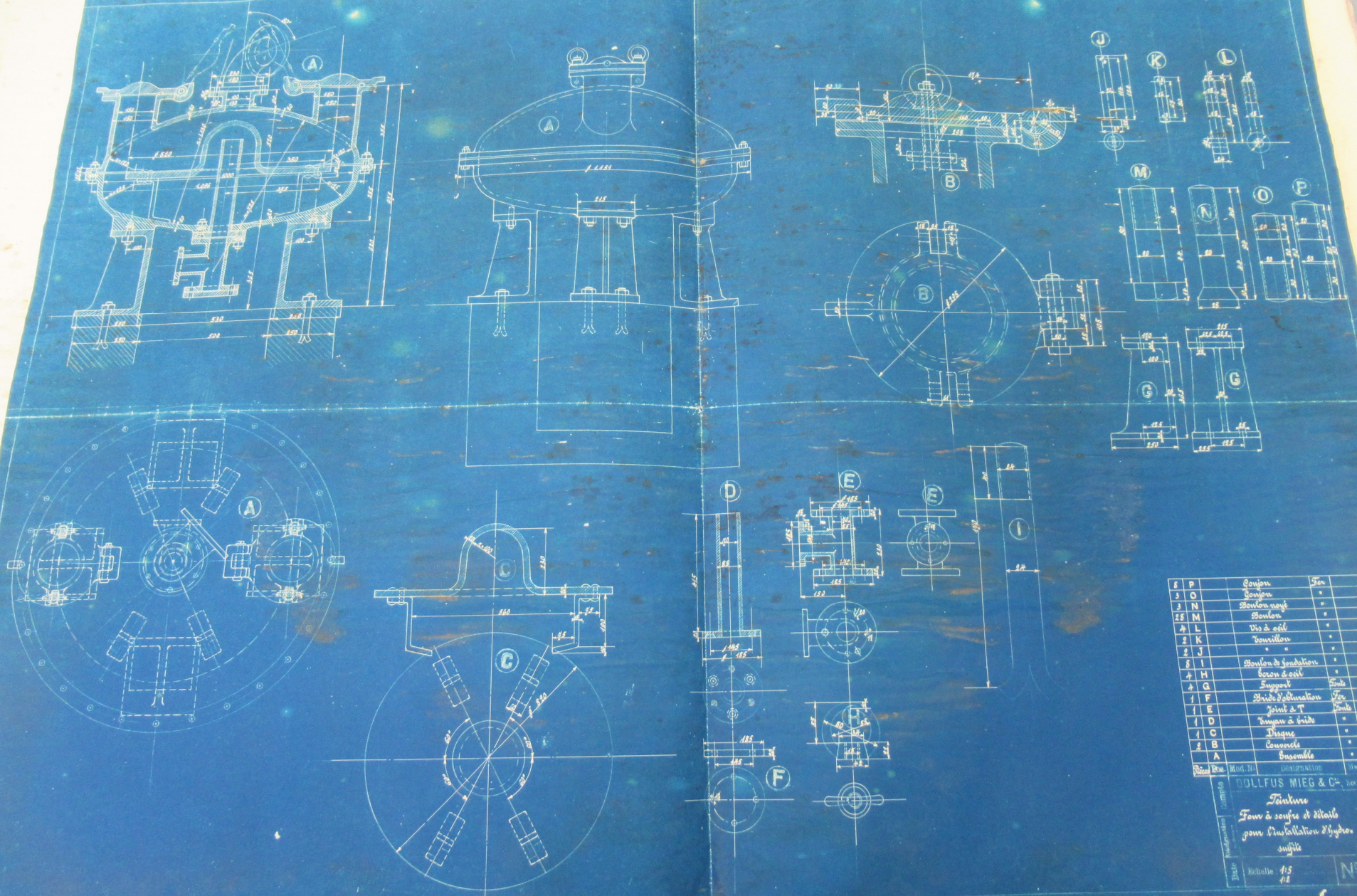
— Teinturerie I

Installation pour la fabrication de l'hydrosulfite de soude

Détails des plans contenus dans ce dossier

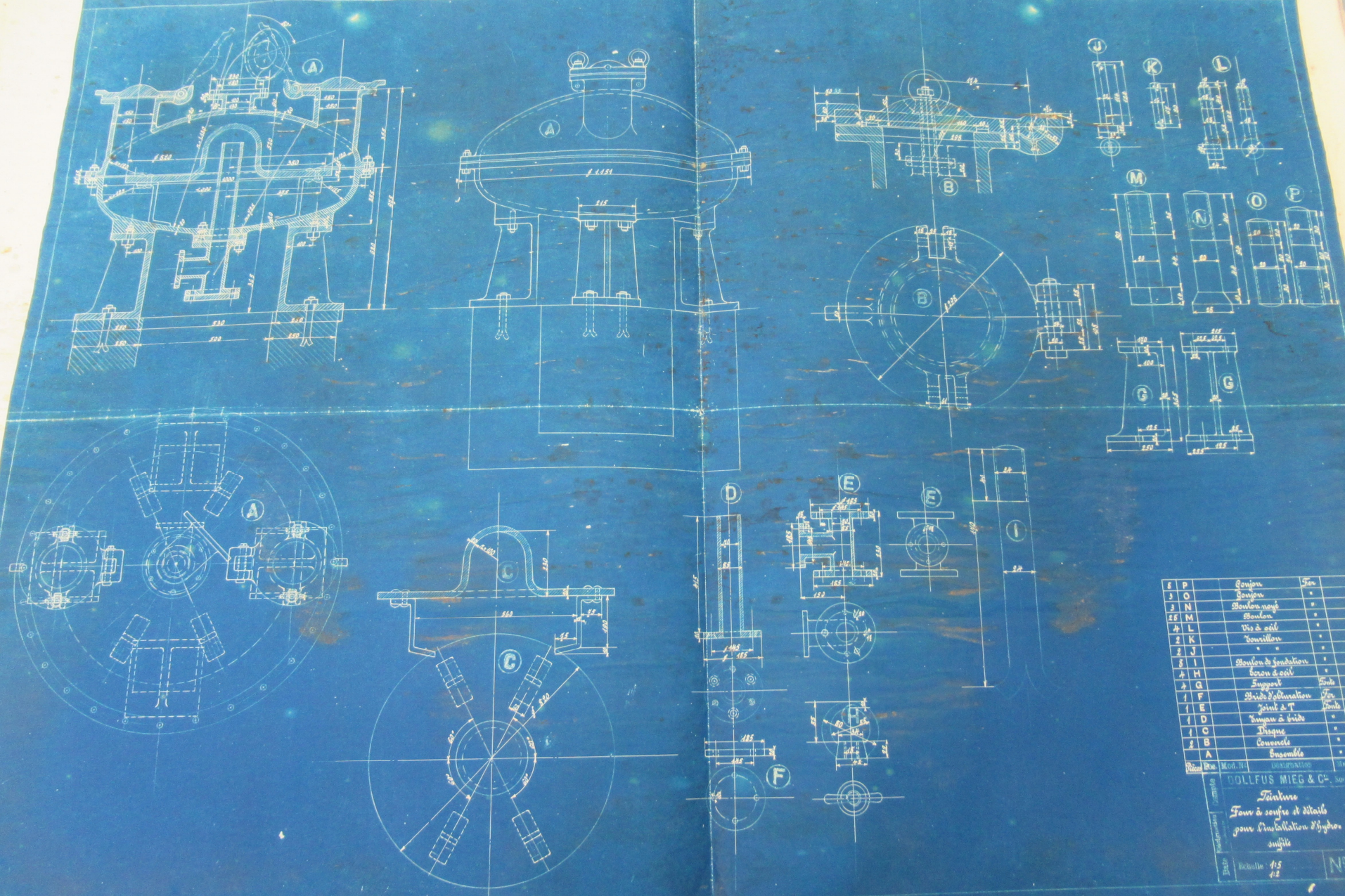
Numéros d'ordre	Numéros des plans	Désignation	Date d'exécution
1	23119	Fabrication de l'hydro. Plan	Nov. 1928
2	20439	" " " Coupe trans	Sept. 1928
3	20438	" " " Coupe longi.	Mai 1926
4	24884	Colonne de Fabrication	Sept. 1930
5	20800	Malaxeur . Ensemble	Aout 1926
6	17654	Four à soufre . Ensemble	Octo. 1923
7			
8			

12 D MC 218



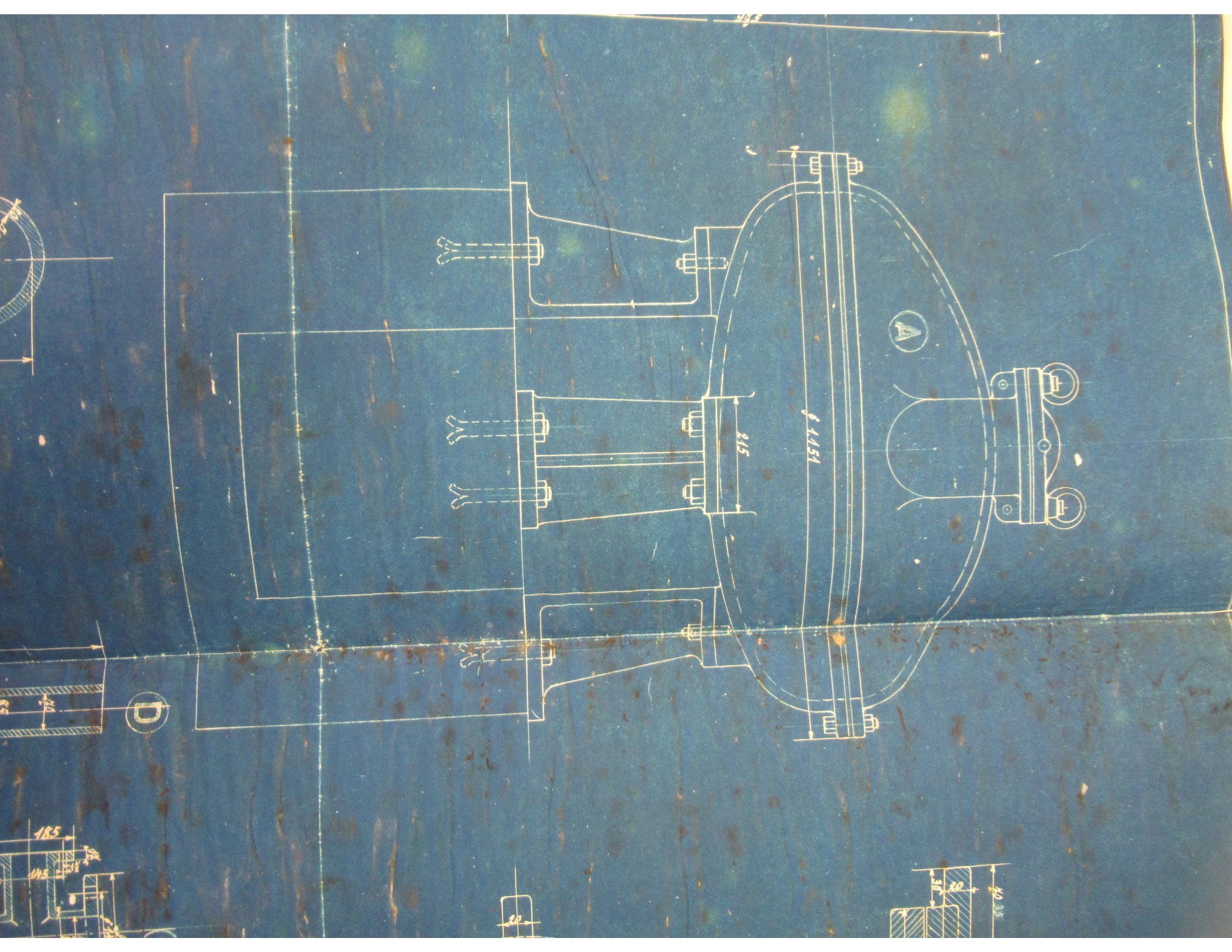
Q	Quantité	Description	Mat.
6	P	Bouillon	Fer
3	O	Boulon	"
3	N	Boulon noyé	"
25	M	Boulon	"
4	L	Vis à œil	"
2	K	Bouillon	"
2	J	"	"
8	I	Boulon de fixation	"
4	H	Boulon d'arrêt	"
4	G	Support	Fonte
1	F	Plaque d'alumination	Fer
1	E	Joint à T	Fonte
1	D	Support à bride	"
1	C	Diaphragme	"
2	B	Couvercle	"
1	A	Ensemble	"

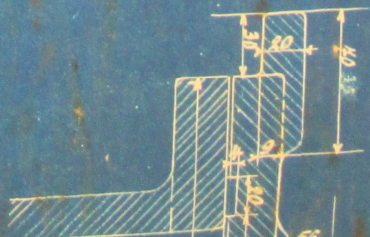
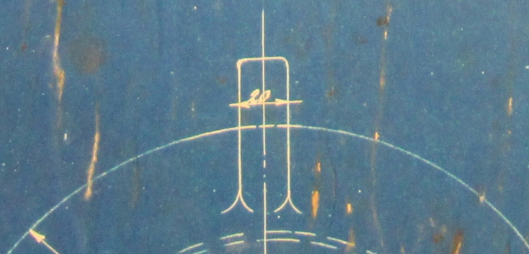
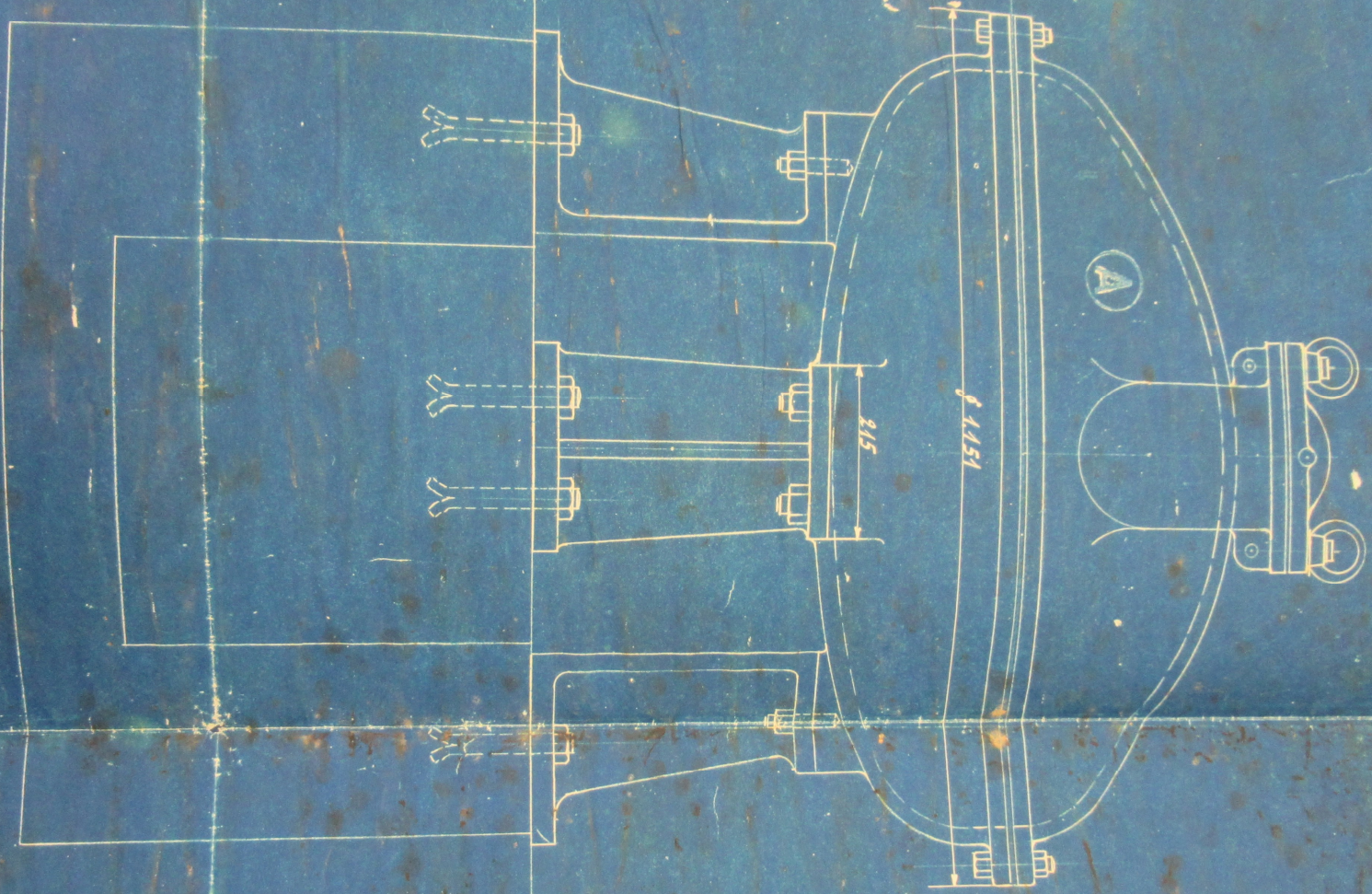
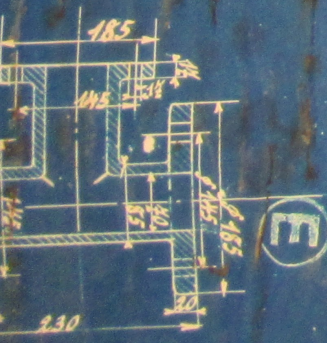
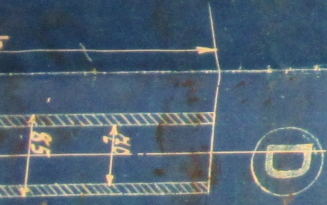
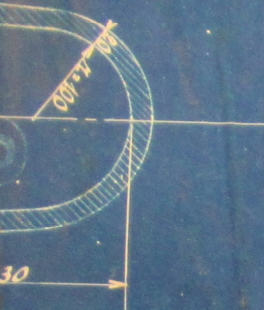
Mod. N° 14654
COLFUS MIEG & Co Société Anonyme
 Levallois-Perret
 Fait en France
 Dessiné par: J.E.
 Date: 23.1.22
 Dossier: 308
 Reprise: 4/5
 4/8
N° 14654

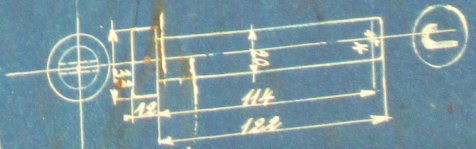
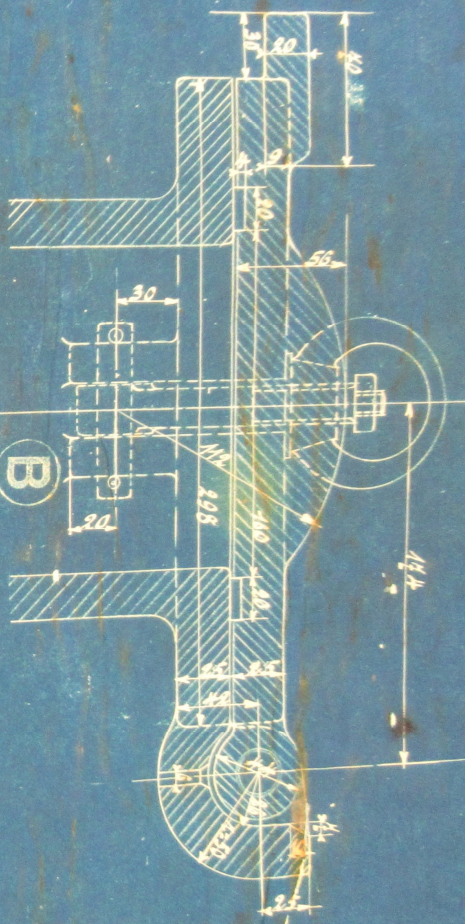
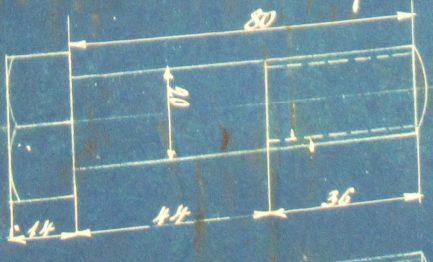
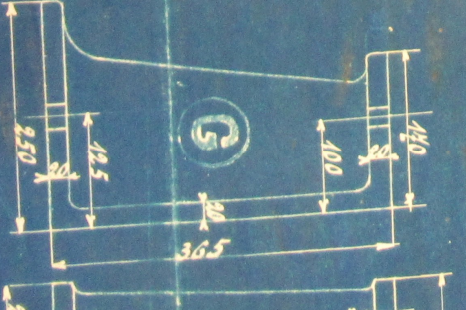
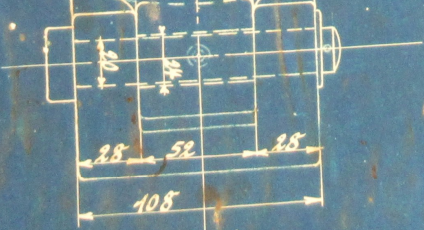
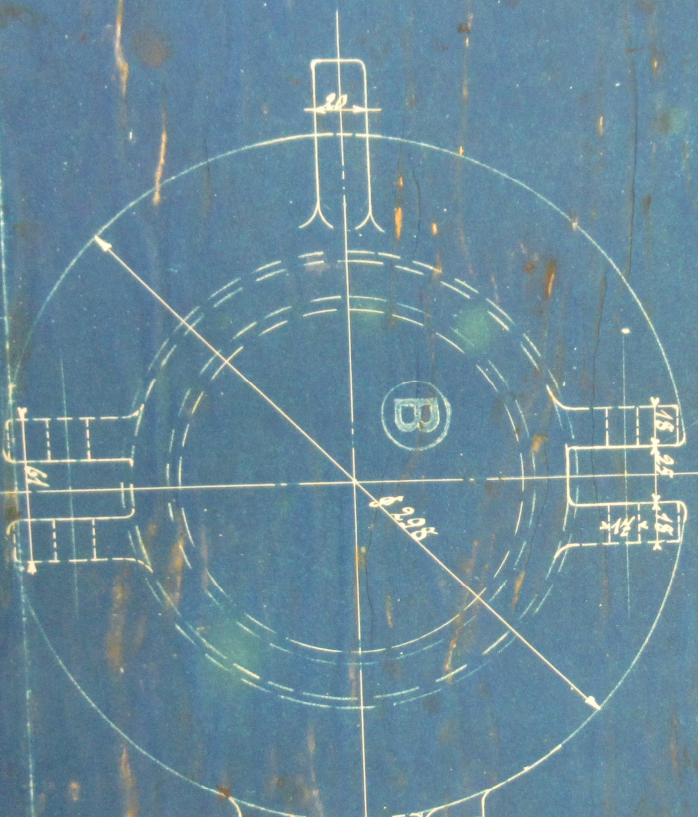
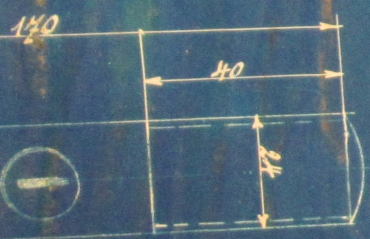
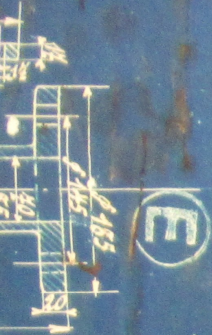


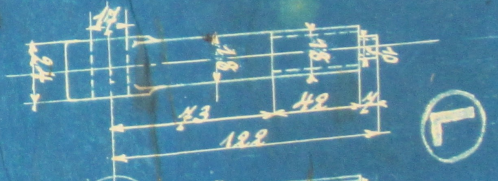
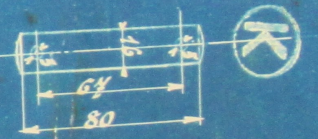
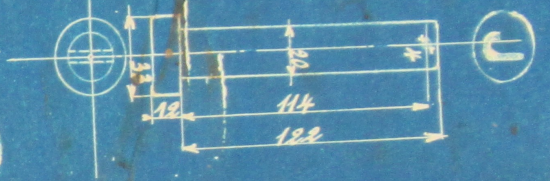
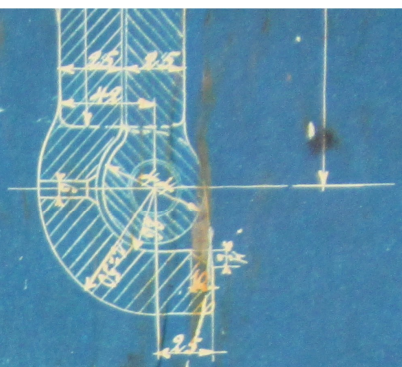
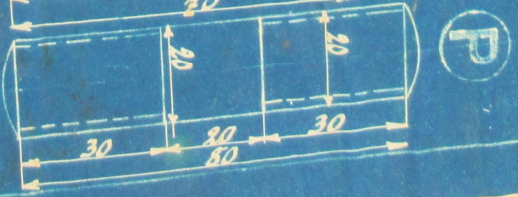
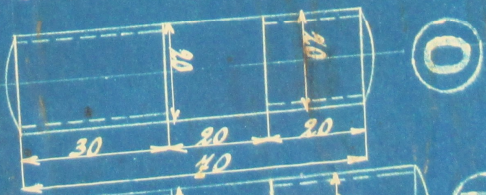
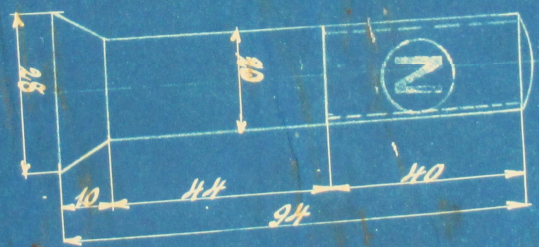
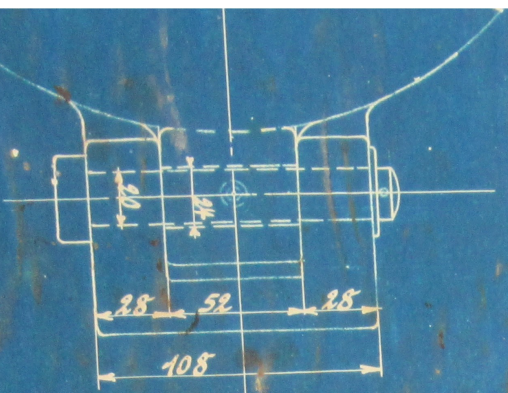
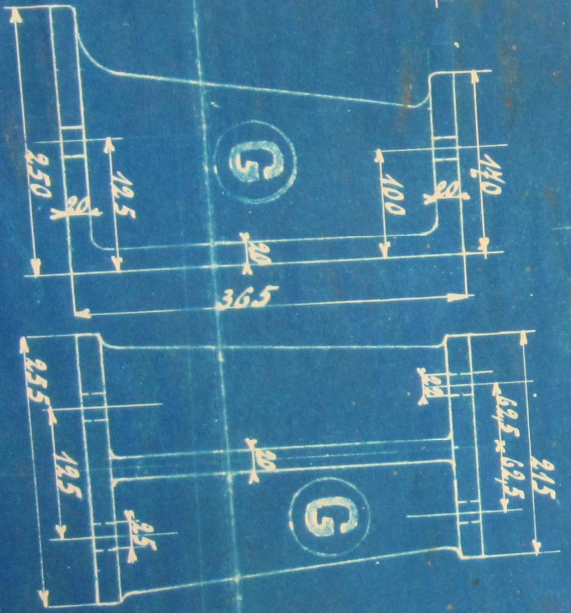
Designation	Quantity	Material
P		Boijon
O		Boijon
N		Boijon court
M		Boijon
L		Vis à œil
K		Touilloir
J		"
I		Boijon de fixation
H		Boijon à œil
G		Support
F		Boijon d'entretien
E		Joint à T
D		Boijon à bride
C		Plaque
B		Couvercle
A		Ensemble

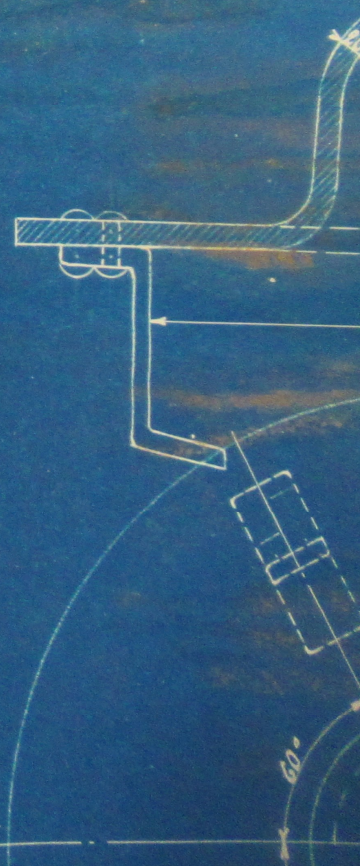
Mod. N° 17654
 SOCIÉTÉ ANONYME
COLLEUS MIEG & C^{ie}
 Trévise
 Four à soufre et détails
 pour l'installation d'hydro-
 sulfite
 Dessiné par: *ST*
 Date: 28.1.22
 Dossier 308
 Echelle: 1/5
 1/2 N° 17654

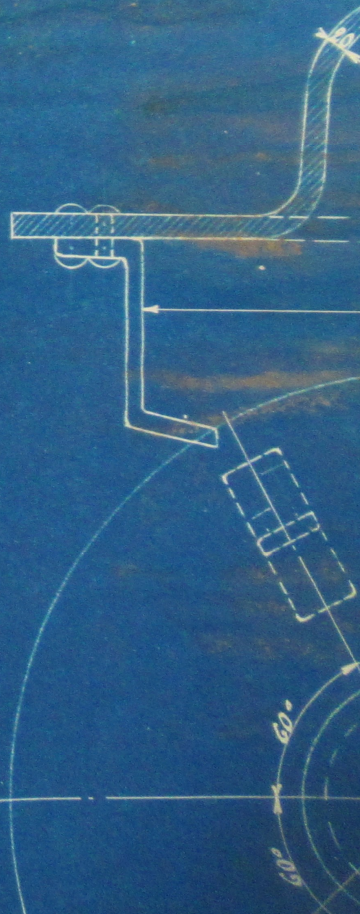
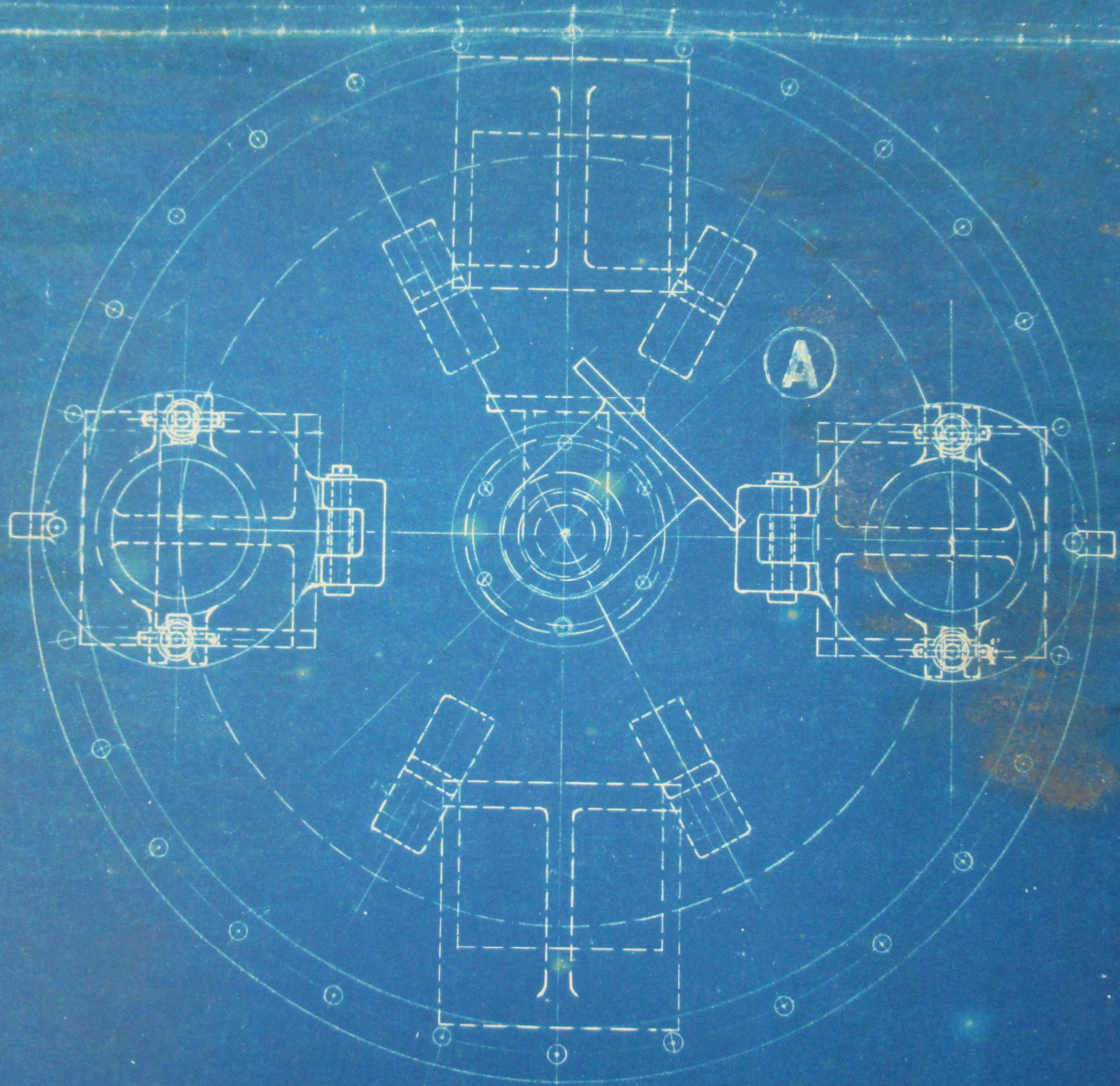


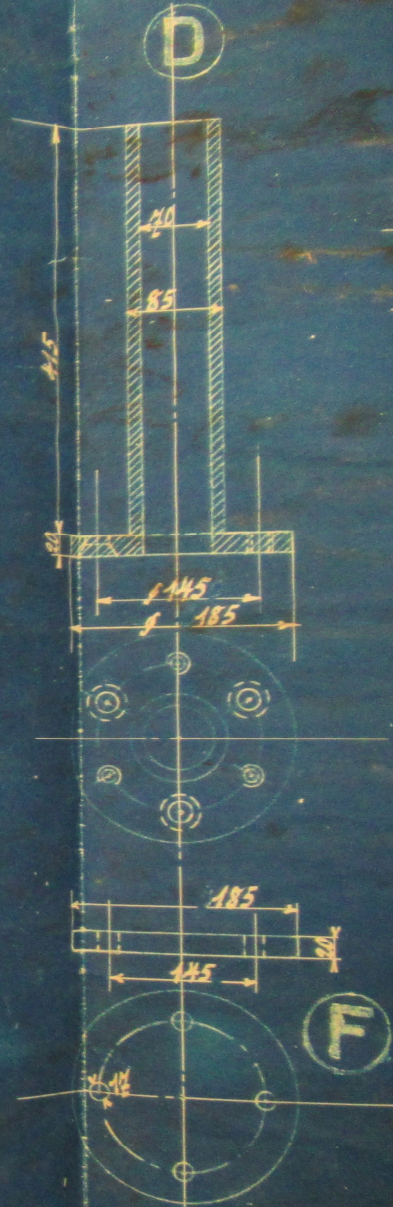
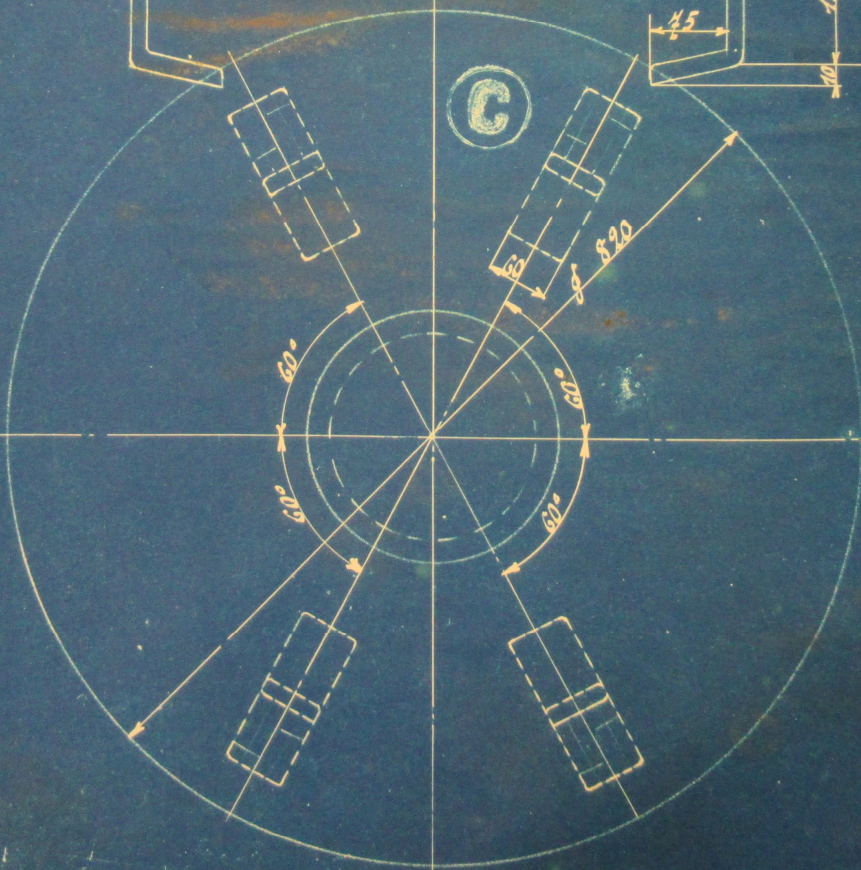
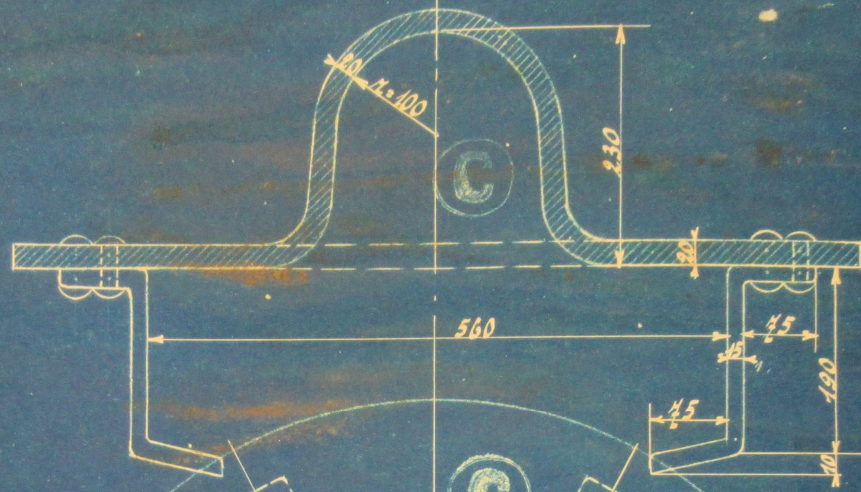
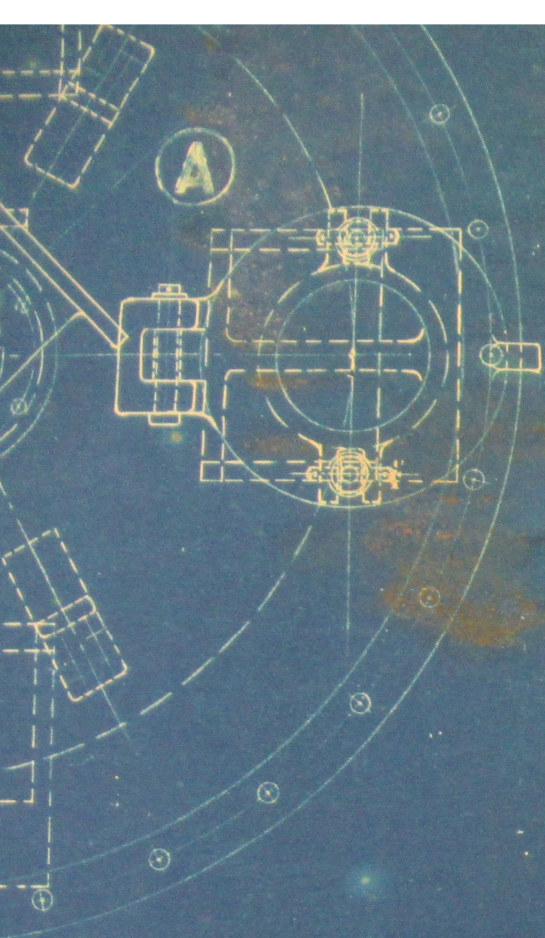


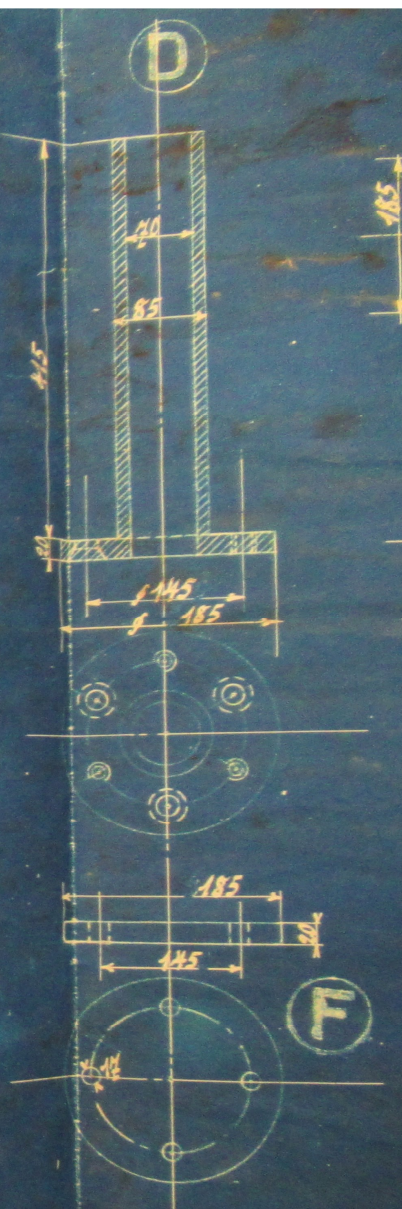
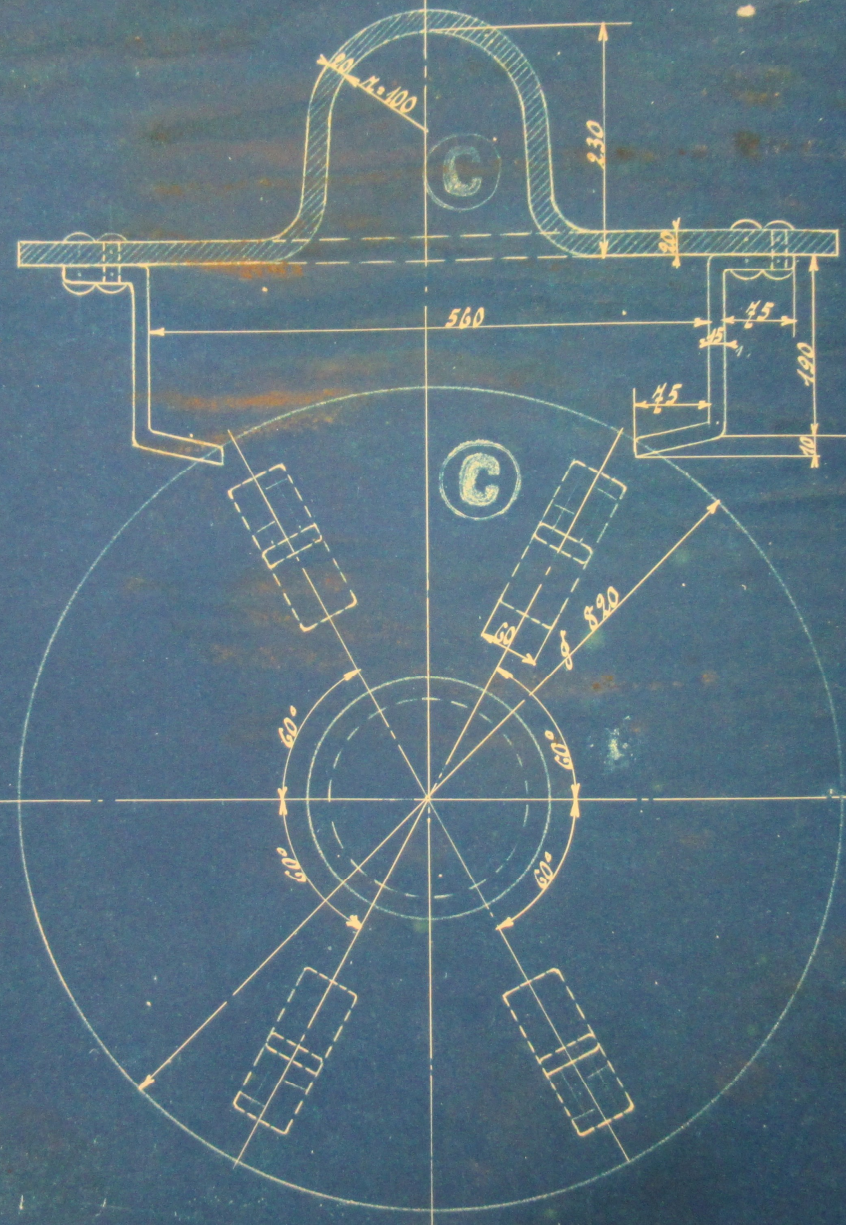
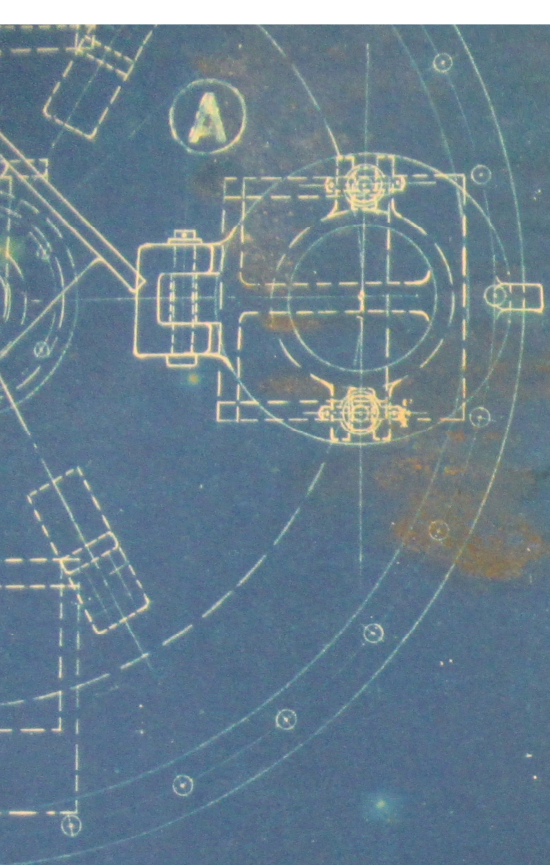


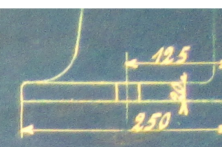
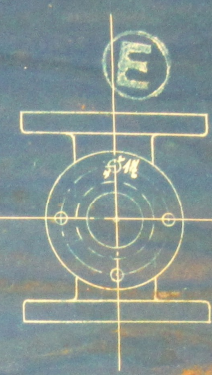
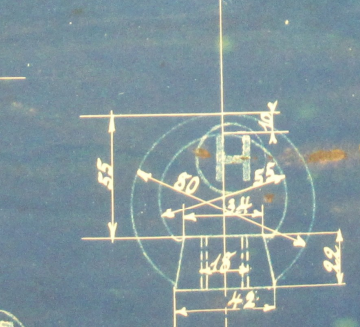
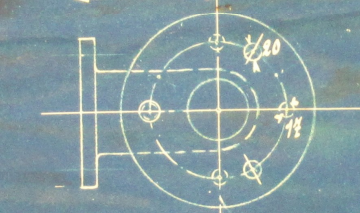
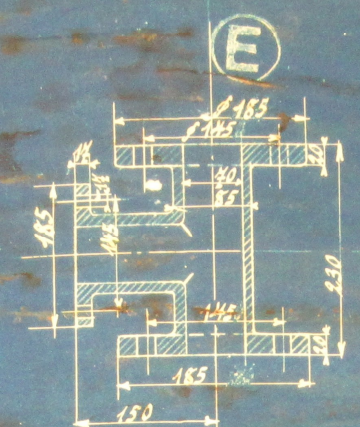
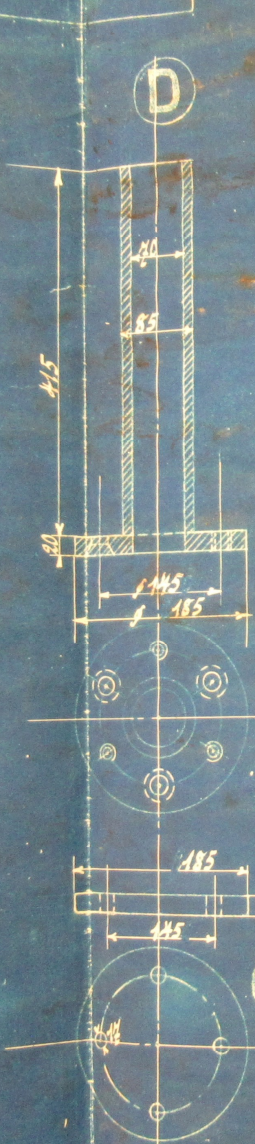
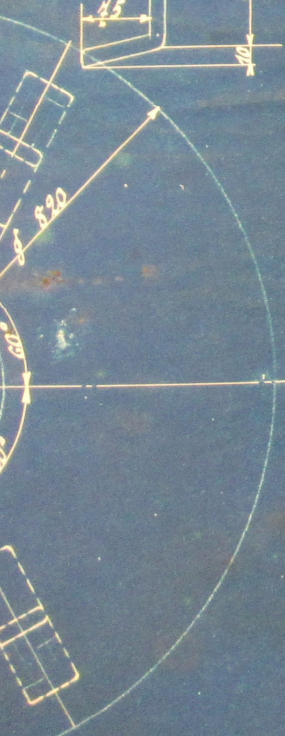
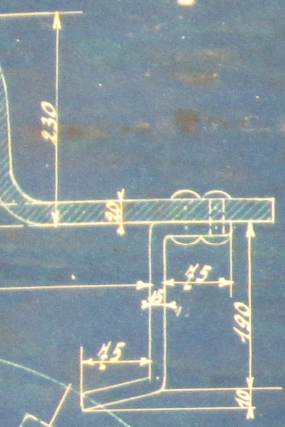












5	1
3	0
3	1
28	1
4	1
2	2
2	2
8	8
4	4
4	4
1	1
1	1
1	1
1	1
2	2
2	2

1

24

8	P		Conjon	Fer	
3	O		Conjon	"	
3	N		Boulon noyé	"	
28	M		Boulon	"	
4	L		Vis à oeil	"	
2	K		Conrillon	"	
2	J		" "	"	
8	I		Boulon de fondation	"	
4	H		Ecrou à oeil	"	
4	G		Support	Fonte	
1	F		Bride d'obturation	Fer	
1	E		Joint à T	Fonte	
1	D		Trayon à bride	"	
1	C		Disque	"	
2	B		Couvercle	"	
	A		Ensemble	"	
Pieces	Pos.	Mod. N°	Désignation	Mat.	Observation

Compte	DOLLFUS MIEG & C ^{ie} , Société Anonyme	
	<i>Teinture</i> <i>Fonds à soufre et détails</i> <i>pour l'installation d'hydro-</i> <i>sulfite</i>	Dessiné par: <i>ME</i> Date: <i>19. I. 23</i> Dossier: <i>39/8</i>
Date	Echelle: <i>1:5</i> <i>1:2</i>	N ^o <i>14654</i>

8	P		Goujon	Fer	
3	O		Goujon	"	
3	N		Boulon noyé	"	
28	M		Boulon	"	
4	L		Vis à oeil	"	
2	K		Bouillon	"	
2	J		" "	"	
8	I		Boulon de fondation	"	
4	H		Écrou à oeil	"	
4	G		Support	Fonte	
1	F		Bride d'obturation	Fer	
1	E		Joint à T	Fonte	
1	D		Tringon à bride	"	
1	C		Disque	"	
2	B		Couvercle	"	
	A		Ensemble	"	
Pièces	Pos.	Mod. N°	Désignation	Mat.	Observation

Compte	DOLLFUS MIEG & C ^{ie} , Société Anonyme	
Désignation générale	Teinture	Dessiné par: <i>ME</i>
	Fourn à soufre et détails pour l'installation d'hydro- sulfite	Date: 19. I. 23 Dossier: 39/8
Date	Echelle: 1:5 1:2	N° 14654